

Land For Sale

Streamwood Corporate Center, Streamwood Illinois

LOT #1 AND #6 FOR SALE



SPECIFICATIONS

BTS AVAILABLE: 15,000 – 20,000 SF

ZONING: Industrial (I-1)

LOT SIZE: Lot #1: 1.77 Acres
Lot #6: 1.33 Acres

SALE PRICE: Subject to Offer

- Located in Streamwood Corporate Center
- In Proximity to Elgin O'Hare Expressway
- High Exposure Availability on Rt. 20 (Lake St.)
- Flexible Building Sizes and Layouts
- 6B Tax Incentive Friendly Municipality

Contact:



Sam Deihs
224-202-6290
sdeihs@entrecommercial.com

John M Joyce
847-612-0464
jjoyce@entrecommercial.com

Mike DeSerto
224-588-3026
mdeserto@entrecommercial.com

www.entrecommercial.com

3550 Salt Creek Lane, Suite 104, Arlington Heights, IL. 60005

ENTRE
Commercial Realty LLC

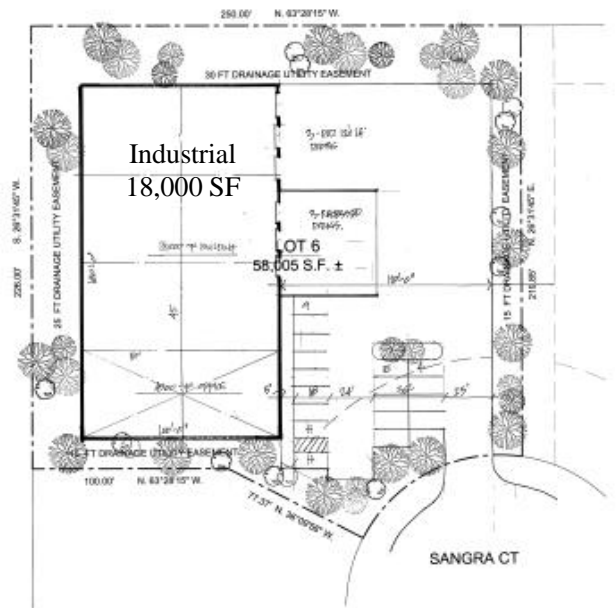
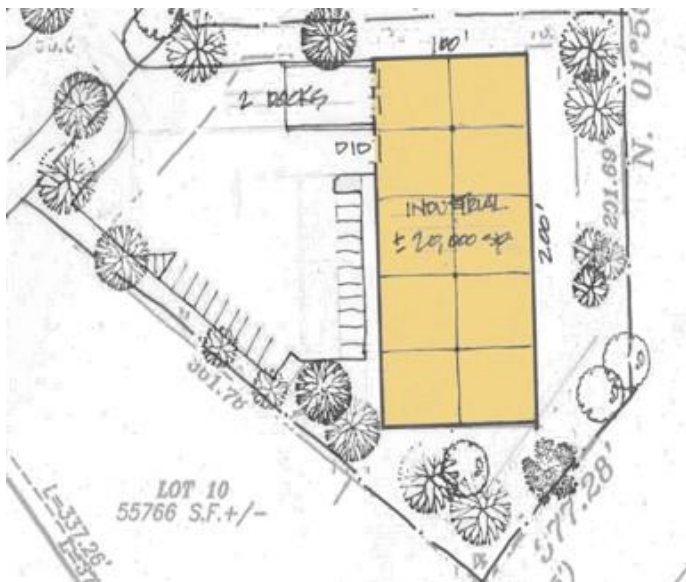
Land For Sale
Streamwood Corporate Center, Streamwood Illinois

LOT #1 AND #6 FOR SALE



Lot 1 - 20,000 SF

Lot 6 - 18,000 SF



(Conceptual building layouts)

www.entrecommercial.com

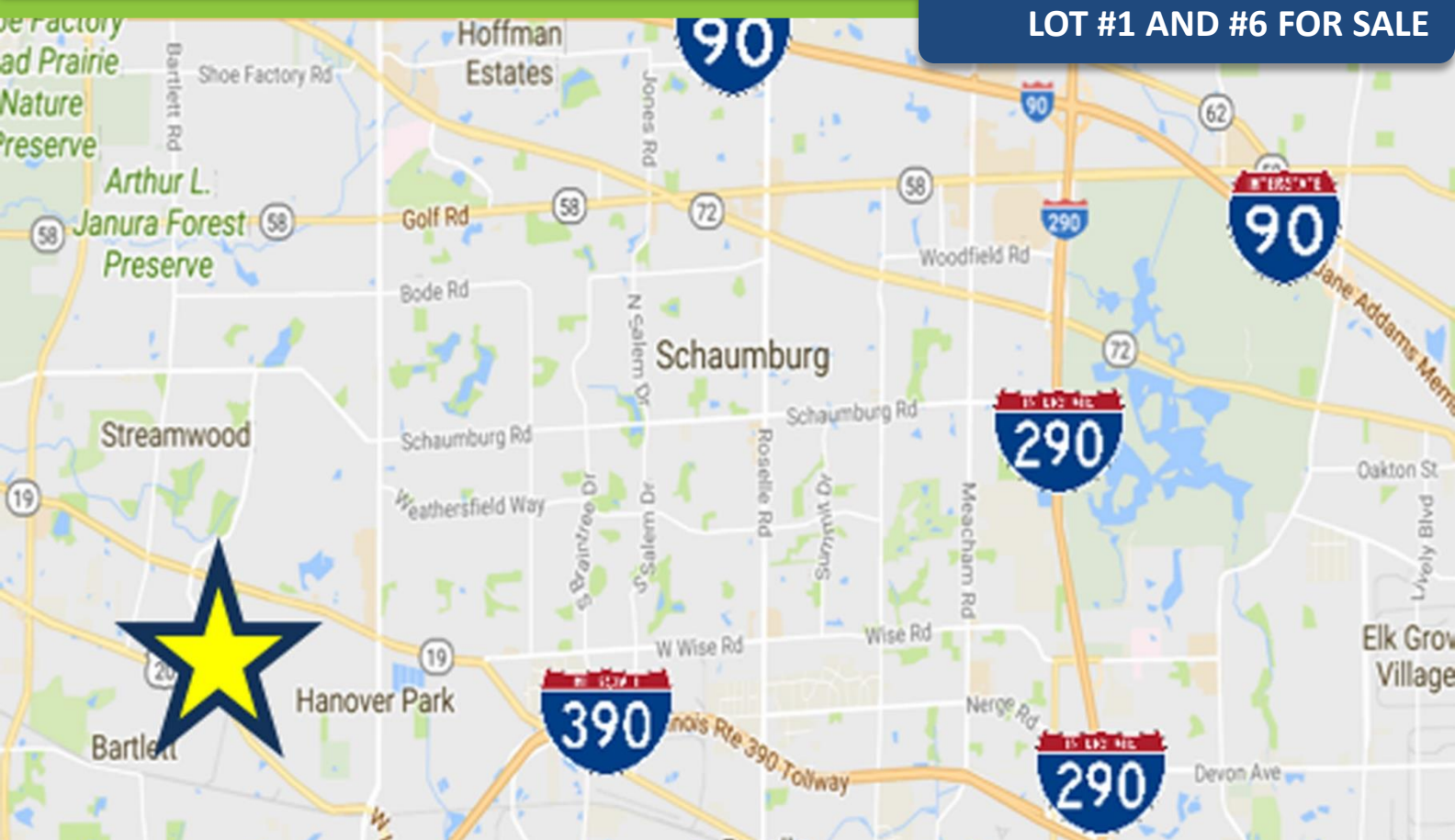
3550 Salt Creek Lane, Suite 104, Arlington Heights, IL. 60005



Land For Sale

Streamwood Corporate Center, Streamwood Illinois

LOT #1 AND #6 FOR SALE



LOCATION

Northwest of Chicago:

- Chicago Loop - 35 miles – 49 minute drive time
- O'Hare Airport - 20 miles – 28 minute drive time
- Schaumburg Airport – 5.5 miles

Expressways:

- Minutes from I-90 & Elgin O'Hare Expressway

Population:

- 40,345 Residents
- Median Age: 37 Years Old
- Median House Hold Income: \$77,022
- Median Home Value: \$182,228

Contact:

Sam Deihs
224-202-6290
sdeihs@entreccommercial.com

John M Joyce
847-612-0464
jjoyce@entreccommercial.com

Mike DeSerto
224-588-3026
mdeserto@entreccommercial.com

www.entreccommercial.com

3550 Salt Creek Lane, Suite 104, Arlington Heights, IL. 60005

ENTRE
Commercial Realty LLC