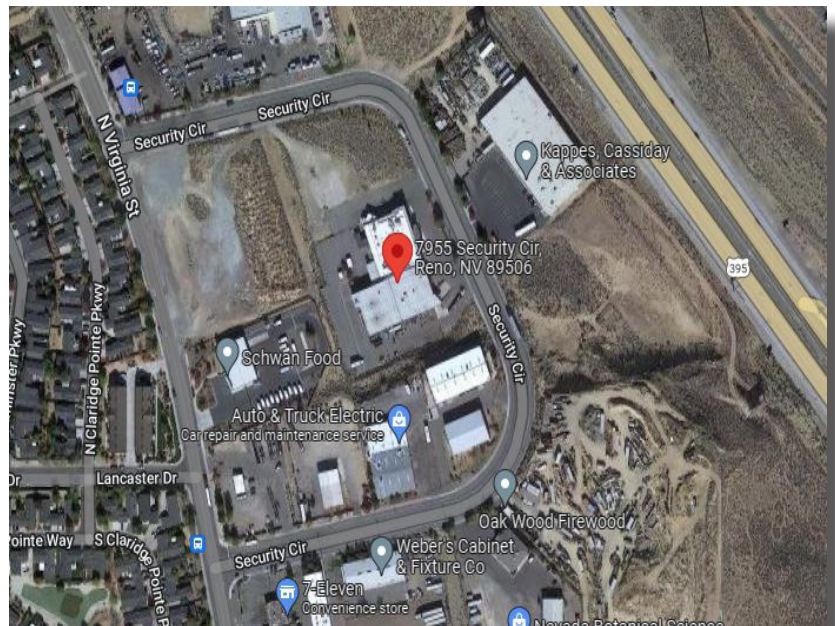




## PROPERTY SNAPSHOT

- \$1.10 PSF NNN
- Fenced Yard
- 20,000 Square Feet
- High Visibility by 75,000 CPD
- North Valleys Submarket
- Easy Access from Highway 395



**KEVIN ANNIS, SIOR, CCIM**

Broker/Principal  
kannis@archcrestnv.com  
C: 775.742.2539  
NV Lic B.1000617.LLC

**MIKE VAN BLARICOM**

Principal  
mikev@archcrestnv.com  
C: 775.250.9531  
NV Lic S.0066330

**MELANIE STEWART**

Transaction Coordinator  
mstewart@archcrestnv.com  
P: 775.852.9800 x 205  
NV Lic S.0061263

**775.852.9800**

[WWW.ARCHCRESTNV.COM](http://WWW.ARCHCRESTNV.COM)

ArchCrest Commercial Partners • 5560 Longley Lane, Suite 100, Reno, NV 89511 • Fax: (775) 850-4251

The information contained herein was obtained from sources believed reliable; however, ArchCrest Commercial Partners makes no guarantees, warranties, or representations as to the completeness or accuracy thereof. The presentation of this property is submitted subject to errors, omissions, change of price or terms prior to sale or lease, or withdrawal without notice.





**KEVIN ANNIS, SIOR, CCIM**

Broker/Principal  
kannis@archcrestnv.com  
C: 775.742.2539  
NV Lic B.1000617.LLC

**MIKE VAN BLARICOM**

Principal  
mikev@archcrestnv.com  
C: 775.250.9531  
NV Lic S.0066330

**MELANIE STEWART**

Transaction Coordinator  
mstewart@archcrestnv.com  
P: 775.852.9800 x 205  
NV Lic S.0061263

**775.852.9800**

[WWW.ARCHCRESTNV.COM](http://WWW.ARCHCRESTNV.COM)

ArchCrest Commercial Partners • 5560 Longley Lane, Suite 100, Reno, NV 89511 • Fax: (775) 850-4251

*The information contained herein was obtained from sources believed reliable; however, ArchCrest Commercial Partners makes no guarantees, warranties, or representations as to the completeness or accuracy thereof. The presentation of this property is submitted subject to errors, omissions, change of price or terms prior to sale or lease, or withdrawal without notice.*