

2110 EXECUTIVE HILLS COURT
AUBURN HILLS, MICHIGAN

INDUSTRIAL FOR LEASE

77,062 - 127,000 Square Feet Available



**SIGNATURE
ASSOCIATES**
KNOW SIGNATURE | KNOW RESULTS

EXECUTIVE HILLS TECHNOLOGY CENTER



PROPERTY FEATURES

- 77,062 square feet available
- 17,838 square feet office
- Expandable to 127,000 square feet
- Finish to suit
- 24' clear height
- (3) 12'x14' grade level doors, (1) truckwell
- 5000 amps, 480 volts power
- New owners will completely renovate building by demolishing a large portion of the second floor offices and interior warehouse walls
- Easy access to I-75 and M-59
- Lease Rate: \$9.95/sq. ft. NNN
- Possible Sale



For more information, please contact:

JOHN BOYD
(248) 948 0102
jboyd@signatureassociates.com

SIGNATURE ASSOCIATES
One Towne Square, Suite 1200
Southfield, MI 48076
www.signatureassociates.com

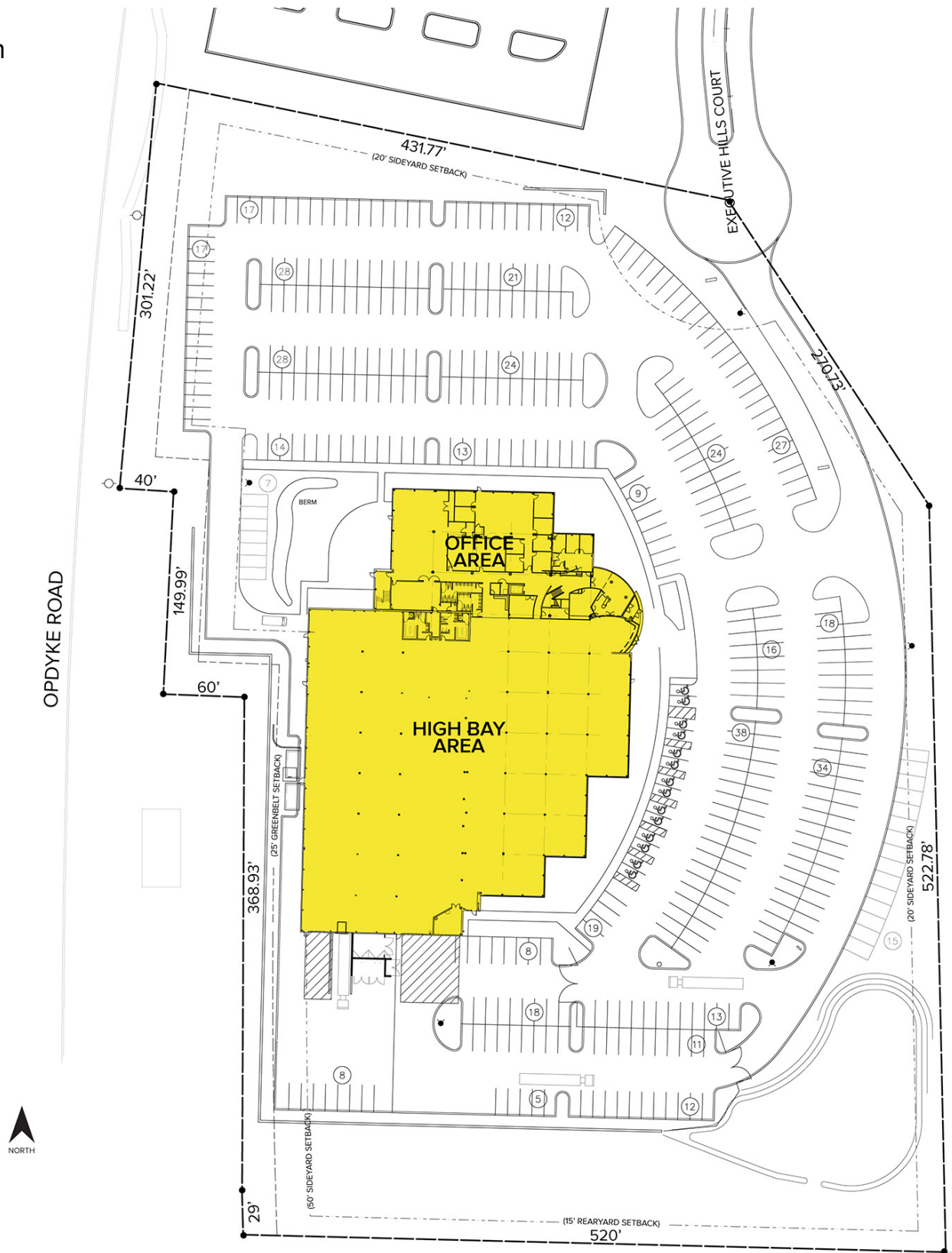
Information is subject to verification and no liability for errors or omissions is assumed. Price is subject to change and listing withdrawal.

2110 Executive Hills Court – Auburn Hills, Michigan

Industrial For Lease

77,062 - 127,000
Square Feet
AVAILABLE

Site Plan



For more information, please contact:
JOHN BOYD
(248) 948 0102
jboyd@signatureassociates.com

SIGNATURE ASSOCIATES
One Towne Square, Suite 1200
Southfield, MI 48076
www.signatureassociates.com

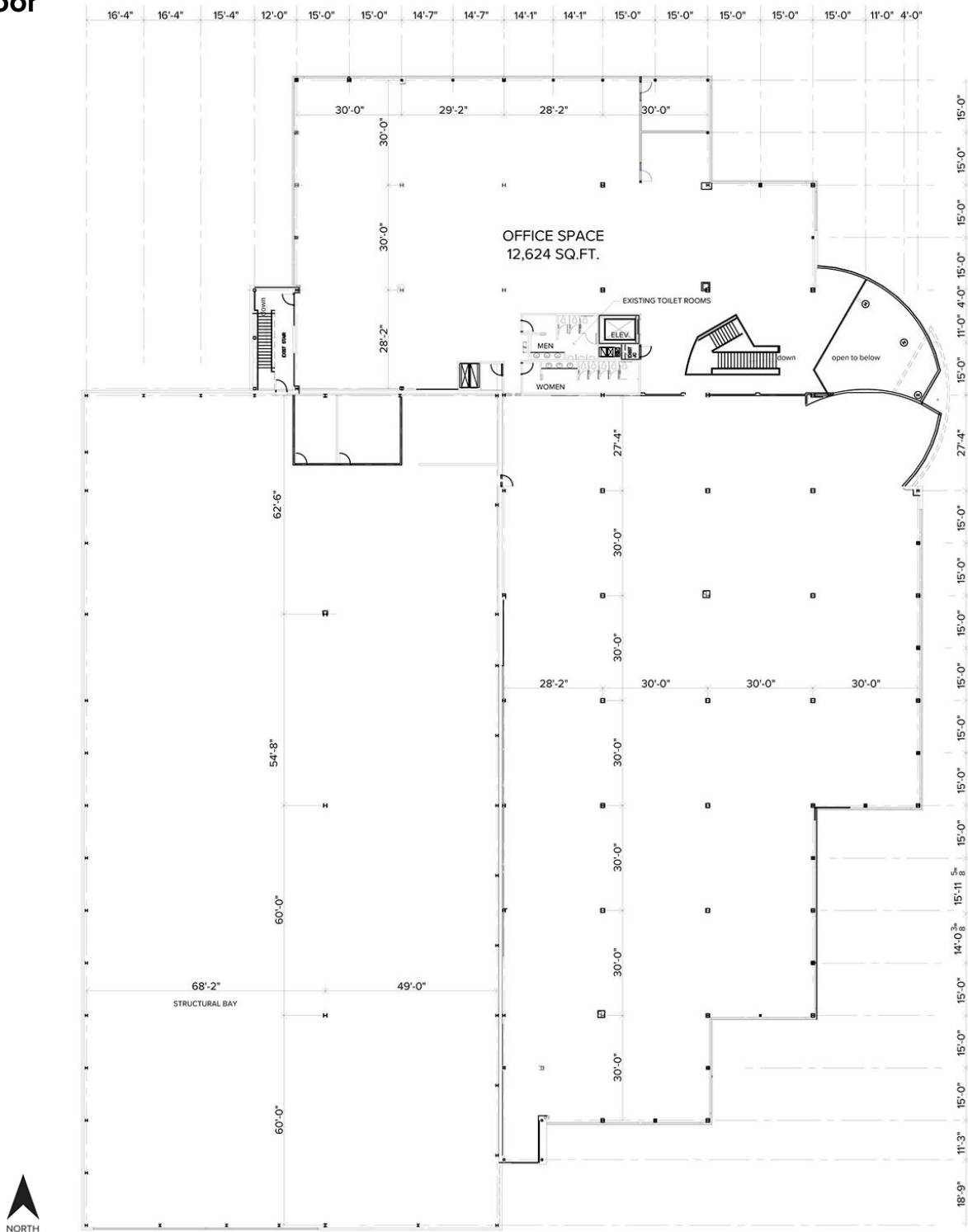
Information is subject to verification and no liability for errors or omissions is assumed. Price is subject to change and listing withdrawal.

2110 Executive Hills Court – Auburn Hills, Michigan

Industrial For Lease

77,062 - 127,000
Square Feet
AVAILABLE

Floor Plan Second Floor



For more information, please contact:

JOHN BOYD
(248) 948 0102
jboyd@signatureassociates.com

SIGNATURE ASSOCIATES
One Towne Square, Suite 1200
Southfield, MI 48076
www.signatureassociates.com

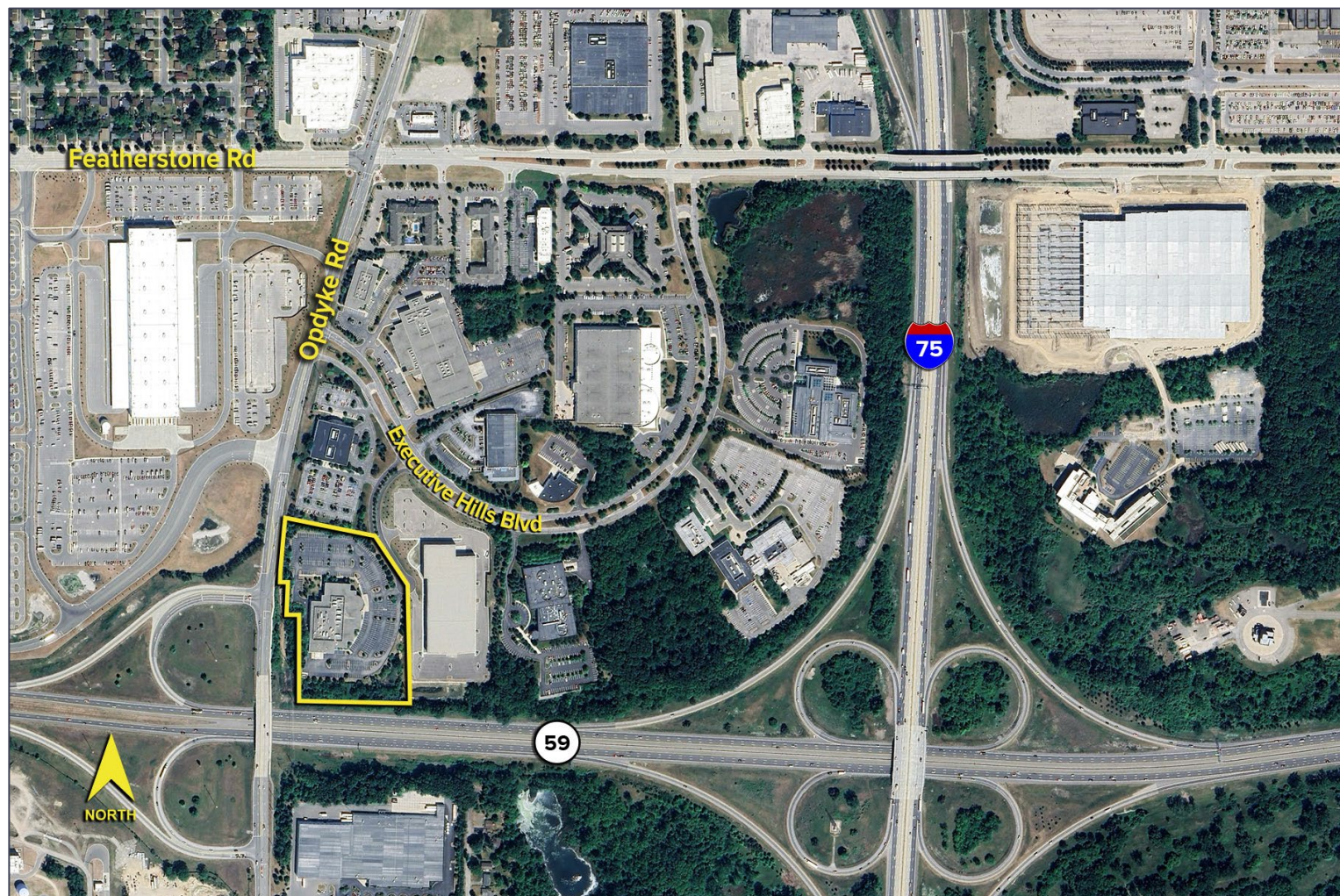
Information is subject to verification and no liability for errors or omissions is assumed. Price is subject to change and listing withdrawal.

2110 Executive Hills Court – Auburn Hills, Michigan

Industrial For Lease

77,062 - 127,000
Square Feet
AVAILABLE

Aerial



For more information, please contact:

JOHN BOYD
(248) 948 0102
jboyd@signatureassociates.com

SIGNATURE ASSOCIATES
One Towne Square, Suite 1200
Southfield, MI 48076
www.signatureassociates.com

Information is subject to verification and no liability for errors or omissions is assumed. Price is subject to change and listing withdrawal.