

Property For Lease

9B Bond Street

Great Neck, NY 11021



 **Douglas Elliman**  
Commercial

For More Information:

[Rozita Soomekh](#)

Licensed Associate Real Estate Broker  
Douglas Elliman Commercial - Long Island  
516.498.2152  
[rozita.soomekh@elliman.com](mailto:rozita.soomekh@elliman.com)

 **THE ROZITA SOOMEKH TEAM**  
at Douglas Elliman  
Real Estate

[WWW.ELLIMANCOMMERCIAL.COM](http://WWW.ELLIMANCOMMERCIAL.COM)

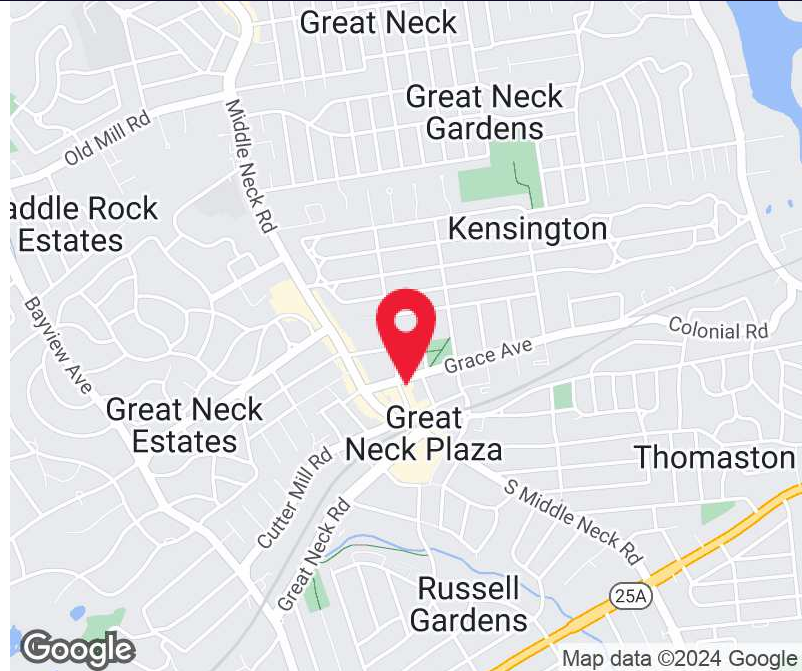
THE PROPERTY CONTAINED WITHIN THIS DOCUMENT IS BEING EXCLUSIVELY REPRESENTED BY DOUGLAS ELLIMAN REAL ESTATE COMMERCIAL DIVISION, 650 SMITHTOWN BYPASS STE. 117 SMITHTOWN, NY 11787 631 868-2405 © 2023 DOUGLAS ELLIMAN COMMERCIAL OF LI, LLC. ALL MATERIAL PRESENTED HEREIN IS INTENDED FOR INFORMATION PURPOSES ONLY. WHILE THIS INFORMATION IS BELIEVED TO BE CORRECT, IT IS REPRESENTED SUBJECT TO ERRORS, OMISSIONS, CHANGES OR WITHDRAWAL WITHOUT NOTICE. ALL PROPERTY INFORMATION, INCLUDING, BUT NOT LIMITED TO SQUARE FOOTAGE, ROOM COUNT, ZONING IN THE LISTING SHOULD BE VERIFIED BY YOUR OWN ATTORNEY, ARCHITECT OR ZONING EXPERT. IF YOUR PROPERTY IS CURRENTLY LISTED WITH ANOTHER REAL ESTATE BROKER, PLEASE DISREGARD THIS OFFER. IT IS NOT OUR INTENTION TO SOLICIT THE OFFERINGS OF OTHER REAL ESTATE BROKERS. WE COOPERATE WITH THEM FULLY. EQUAL HOUSING OPPORTUNITY.





# Retail Property For Lease

## 9B Bond Street Great Neck, NY 11021



### Offering Summary

<b>Lease Rate:</b>	\$3,800.00 per month (MG)
<b>Available SF:</b>	850 SF

### Property Overview

850 SF, \$ 3,800/ Monthly.

Conveniently situated, the space is close to municipal parking, retail outlets, banks, restaurants, the post office, and more. It also enjoys proximity to public transportation, including the LIRR (20 minutes to Manhattan) and bus services, ensuring a high volume of foot and car traffic.

Don't miss the opportunity to establish your presence in Great Neck's thriving commercial scene. Inquire about leasing this space today.

### Property Highlights

- Located in-line with other retail
- Central Air and Heating
- Drop Ceilings
- Exposed Ceilings
- After Hours HVAC Available

For More Information:

**Rozita Soomekh**

Licensed Associate Real Estate Broker  
Douglas Elliman Commercial - Long Island  
516.498.2152  
rozita.soomekh@elliman.com



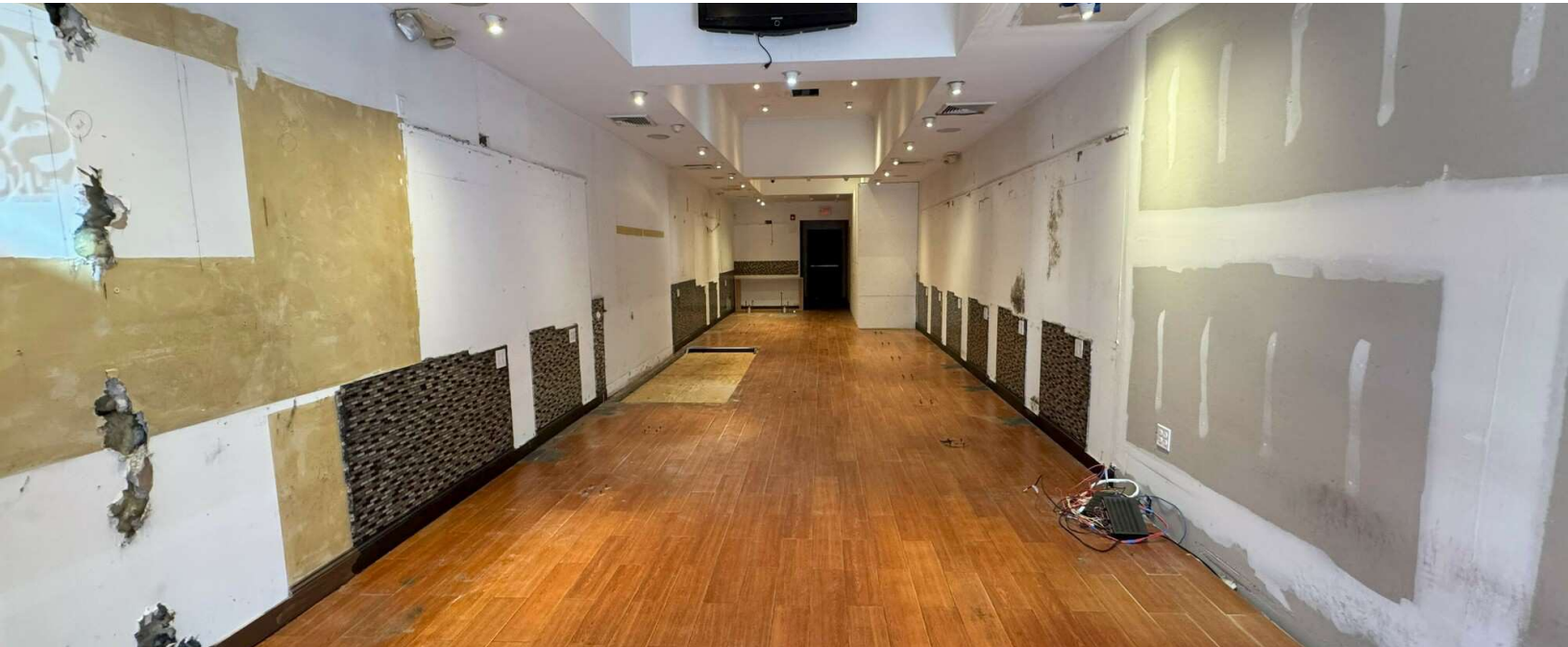
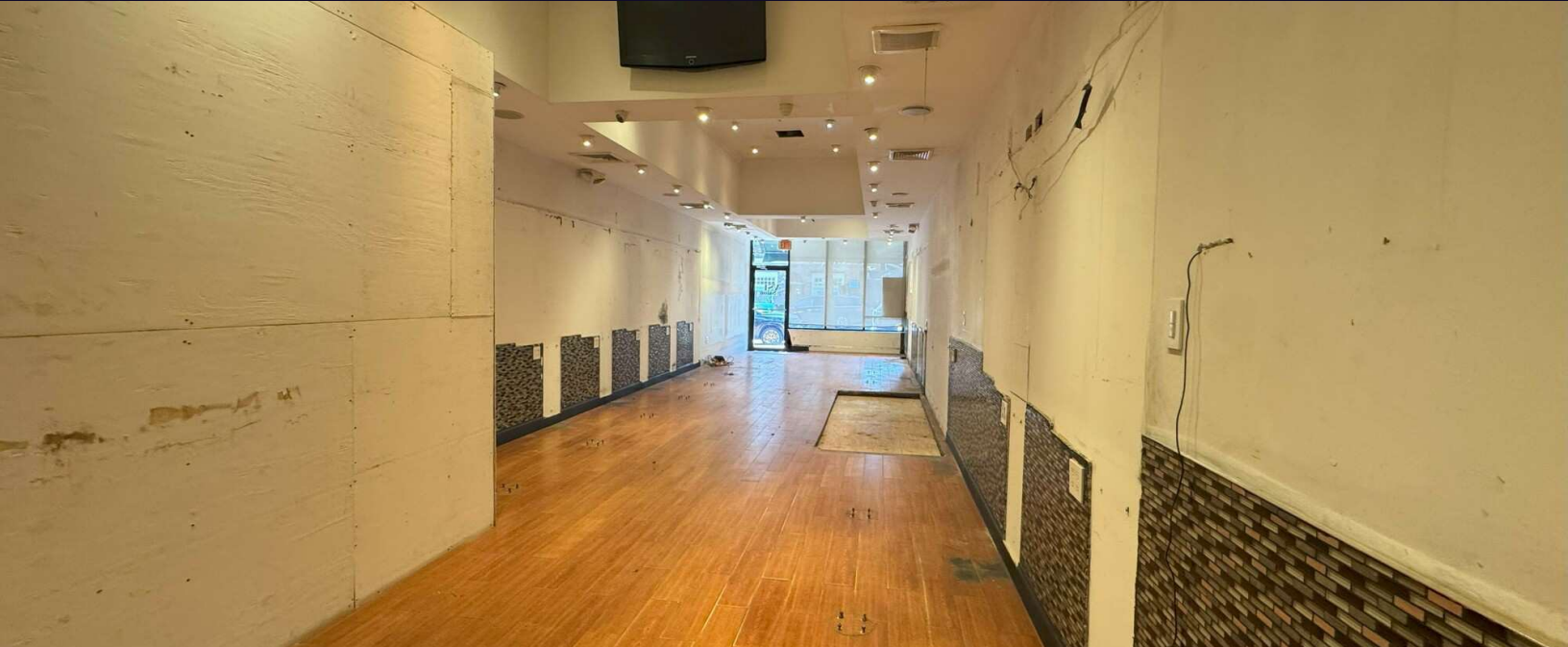
[WWW.ELLIMANCOMMERCIAL.COM](http://WWW.ELLIMANCOMMERCIAL.COM)

THE PROPERTY CONTAINED WITHIN THIS DOCUMENT IS BEING EXCLUSIVELY REPRESENTED BY DOUGLAS ELLIMAN REAL ESTATE COMMERCIAL DIVISION, 550 SMITHTOWN BYPASS STE. 117 SMITHTOWN, NY 11787 631.858.2405 © 2023 DOUGLAS ELLIMAN COMMERCIAL OF LI, LLC. ALL MATERIAL PRESENTED HEREIN IS INTENDED FOR INFORMATION PURPOSES ONLY. WHILE THIS INFORMATION IS BELIEVED TO BE CORRECT, IT IS REPRESENTED SUBJECT TO ERRORS, OMISSIONS, CHANGES OR WITHDRAWAL WITHOUT NOTICE. ALL PROPERTY INFORMATION, INCLUDING, BUT NOT LIMITED TO SQUARE FOOTAGE, ROOM COUNT, ZONING IN THE LISTING SHOULD BE VERIFIED BY YOUR OWN ATTORNEY, ARCHITECT OR ZONING EXPERT. IF YOUR PROPERTY IS CURRENTLY LISTED WITH ANOTHER REAL ESTATE BROKER, PLEASE DISREGARD THIS OFFER. IT IS NOT OUR INTENTION TO SOLICIT THE OFFERINGS OF OTHER REAL ESTATE BROKERS. WE COOPERATE WITH THEM FULLY. EQUAL HOUSING OPPORTUNITY.



# Retail Property For Lease

9B Bond Street Great Neck, NY 11021



For More Information:

[Rozita Soomekh](#)

Licensed Associate Real Estate Broker  
Douglas Elliman Commercial - Long Island  
516.498.2152  
[rozita.soomekh@elliman.com](mailto:rozita.soomekh@elliman.com)

 Douglas Elliman  
Commercial

 THE  
ROZITA  
SOOMEKH  
TEAM

[WWW.ELLIMANCOMMERCIAL.COM](http://WWW.ELLIMANCOMMERCIAL.COM)

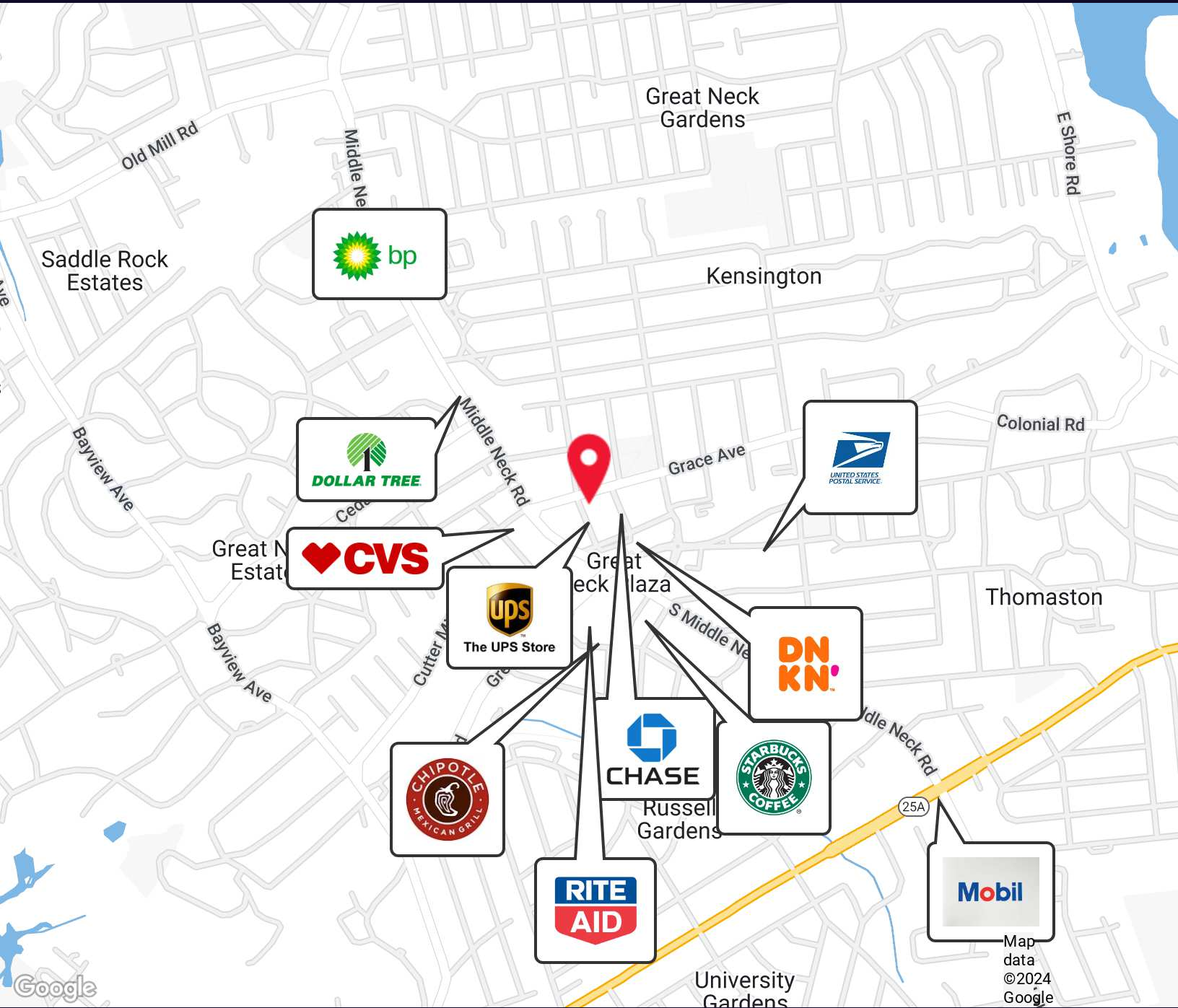
THE PROPERTY CONTAINED WITHIN THIS DOCUMENT IS BEING EXCLUSIVELY REPRESENTED BY DOUGLAS ELLIMAN REAL ESTATE COMMERCIAL DIVISION, 550 SMITHTOWN BYPASS STE. 117 SMITHTOWN, NY 11787 631.858.2405 © 2023 DOUGLAS ELLIMAN COMMERCIAL OF LI, L.L.C. ALL MATERIAL PRESENTED HEREIN IS INTENDED FOR INFORMATION PURPOSES ONLY. WHILE THIS INFORMATION IS BELIEVED TO BE CORRECT, IT IS REPRESENTED SUBJECT TO ERRORS, OMISSIONS, CHANGES OR WITHDRAWAL WITHOUT NOTICE. ALL PROPERTY INFORMATION, INCLUDING, BUT NOT LIMITED TO SQUARE FOOTAGE, ROOM COUNT, ZONING IN THE LISTING SHOULD BE VERIFIED BY YOUR OWN ATTORNEY, ARCHITECT OR ZONING EXPERT. IF YOUR PROPERTY IS CURRENTLY LISTED WITH ANOTHER REAL ESTATE BROKER, PLEASE DISREGARD THIS OFFER. IT IS NOT OUR INTENTION TO SOLICIT THE OFFERINGS OF OTHER REAL ESTATE BROKERS. WE COOPERATE WITH THEM FULLY. EQUAL HOUSING OPPORTUNITY.





# Retail Property For Lease

## 9B Bond Street Great Neck, NY 11021



For More Information:

**Rozita Soomekh**

Licensed Associate Real Estate Broker  
Douglas Elliman Commercial - Long Island  
516.498.2152  
rozita.soomekh@elliman.com

Douglas Elliman  
Commercial



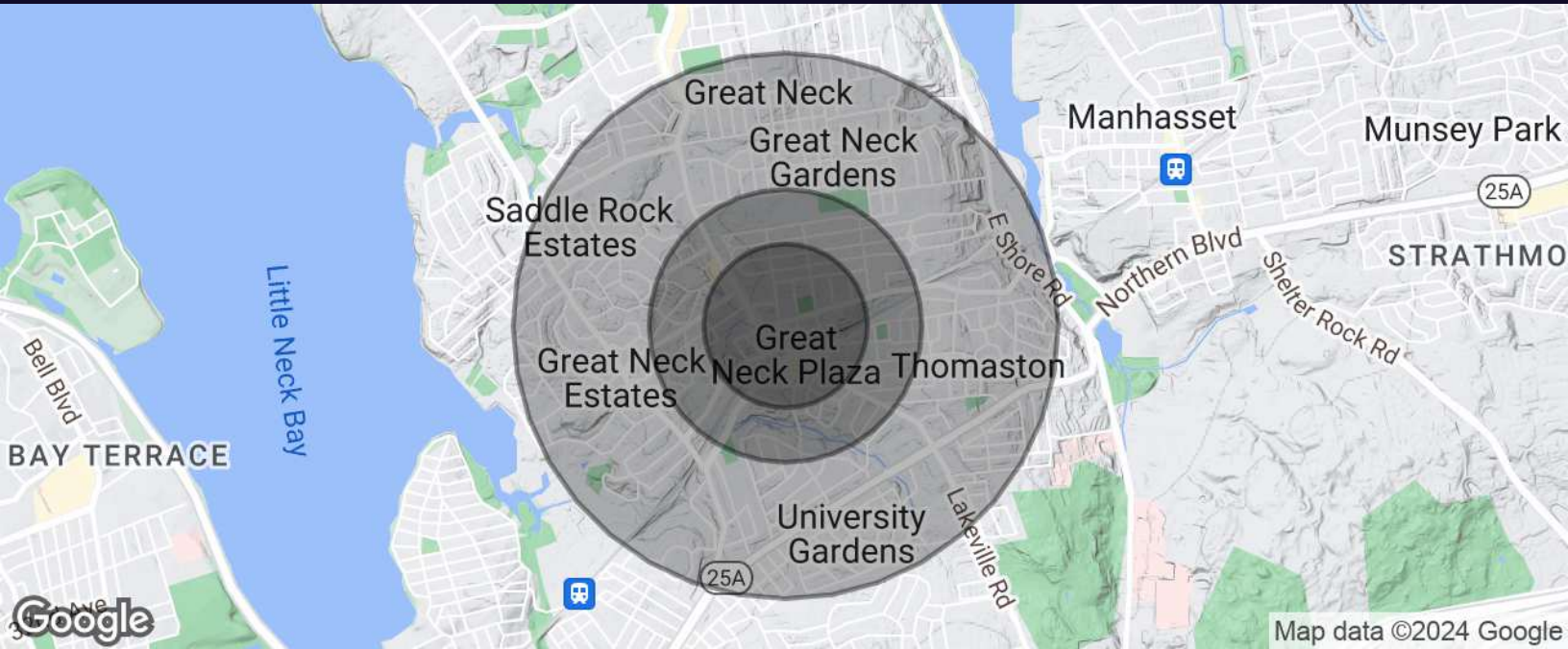
[WWW.ELLIMANCOMMERCIAL.COM](http://WWW.ELLIMANCOMMERCIAL.COM)

THE PROPERTY CONTAINED WITHIN THIS DOCUMENT IS BEING EXCLUSIVELY REPRESENTED BY DOUGLAS ELLIMAN REAL ESTATE COMMERCIAL DIVISION, 550 SMITHTOWN BYPASS STE. 117 SMITHTOWN, NY 11787 631.858.2405 © 2023 DOUGLAS ELLIMAN COMMERCIAL OF LI, LLC. ALL MATERIAL PRESENTED HEREIN IS INTENDED FOR INFORMATION PURPOSES ONLY. WHILE THIS INFORMATION IS BELIEVED TO BE CORRECT, IT IS REPRESENTED SUBJECT TO ERRORS, OMISSIONS, CHANGES OR WITHDRAWAL WITHOUT NOTICE. ALL PROPERTY INFORMATION, INCLUDING, BUT NOT LIMITED TO SQUARE FOOTAGE, ROOM COUNT, ZONING IN THE LISTING SHOULD BE VERIFIED BY YOUR OWN ATTORNEY, ARCHITECT OR ZONING EXPERT. IF YOUR PROPERTY IS CURRENTLY LISTED WITH ANOTHER REAL ESTATE BROKER, PLEASE DISREGARD THIS OFFER. IT IS NOT OUR INTENTION TO SOLICIT THE OFFERINGS OF OTHER REAL ESTATE BROKERS. WE COOPERATE WITH THEM FULLY. EQUAL HOUSING OPPORTUNITY.



# Retail Property For Lease

## 9B Bond Street Great Neck, NY 11021



Population	0.3 Miles	0.5 Miles	1 Mile
Total Population	5,312	9,788	24,686
Average Age	48	47	44
Average Age (Male)	45	44	42
Average Age (Female)	51	50	46

Households & Income	0.3 Miles	0.5 Miles	1 Mile
Total Households	2,501	4,379	9,440
# of Persons per HH	2.1	2.2	2.6
Average HH Income	\$155,464	\$167,770	\$192,110
Average House Value	\$866,741	\$962,028	\$1,131,273

For More Information:

**Rozita Soomekh**

Licensed Associate Real Estate Broker  
Douglas Elliman Commercial - Long Island  
516.498.2152  
rozita.soomekh@elliman.com



[WWW.ELLIMANCOMMERCIAL.COM](http://WWW.ELLIMANCOMMERCIAL.COM)

THE PROPERTY CONTAINED WITHIN THIS DOCUMENT IS BEING EXCLUSIVELY REPRESENTED BY DOUGLAS ELLIMAN REAL ESTATE COMMERCIAL DIVISION, 550 SMITHTOWN BYPASS STE. 117 SMITHTOWN, NY 11787 631.858.2405 © 2023 DOUGLAS ELLIMAN COMMERCIAL OF LI, LLC. ALL MATERIAL PRESENTED HEREIN IS INTENDED FOR INFORMATION PURPOSES ONLY. WHILE THIS INFORMATION IS BELIEVED TO BE CORRECT, IT IS REPRESENTED SUBJECT TO ERRORS, OMISSIONS, CHANGES OR WITHDRAWAL WITHOUT NOTICE. ALL PROPERTY INFORMATION, INCLUDING, BUT NOT LIMITED TO SQUARE FOOTAGE, ROOM COUNT, ZONING IN THE LISTING SHOULD BE VERIFIED BY YOUR OWN ATTORNEY, ARCHITECT OR ZONING EXPERT. IF YOUR PROPERTY IS CURRENTLY LISTED WITH ANOTHER REAL ESTATE BROKER, PLEASE DISREGARD THIS OFFER. IT IS NOT OUR INTENTION TO SOLICIT THE OFFERINGS OF OTHER REAL ESTATE BROKERS. WE COOPERATE WITH THEM FULLY. EQUAL HOUSING OPPORTUNITY.



# Retail Property For Lease

## 9B Bond Street Great Neck, NY 11021



### Rozita Soomekh

Licensed Associate Real Estate Broker

rozita.soomekh@elliman.com

Direct: 516.498.2152 | Cell: 516.205.2279

### Professional Background

Rozita has been successfully marketing and selling real estate since 2000. Clients choose to work with Rozita for her full-service approach, her ethics, her extensive knowledge, and her perseverance. Rozita consistently achieves results for her clients, whether they are buying or selling real estate for themselves, or as an investment.

Rozita's strong base of loyal repeat customers is the reason she has been successful for nearly two decades in this incredibly competitive real estate environment. Among her repeat buyers and valued clients are some of New York's most influential developers, large franchises and solidified businesses. Rozita has sold commercial and residential properties in Nassau, Queens, the Bronx, Manhattan, Brooklyn, and Suffolk.

In late 2018, due to an overwhelming clientele base, Rozita formed a team to meet demands. By leading The Rozita Soomekh Team and sharing her knowledge of the real estate market, she has excelled in closing listings and gaining new loyal customers. By constantly striving to stay in the front of market trends, Rozita has won multiple awards for her excellence in real estate. She is committed to providing her customers with the best selling strategies and marketing that Elliman can offer, negotiating for the best possible outcome for her customer(s).

#### Douglas Elliman Commercial - Long Island

550 Smithtown Bypass Suite 117

Smithtown, NY 11787

631.858.2405

For More Information:

### Rozita Soomekh

Licensed Associate Real Estate Broker

Douglas Elliman Commercial - Long Island

516.498.2152

rozita.soomekh@elliman.com

Douglas Elliman  
Commercial

THE  
ROZITA  
SOOMEKH  
TEAM

[WWW.ELLIMANCOMMERCIAL.COM](http://WWW.ELLIMANCOMMERCIAL.COM)

THE PROPERTY CONTAINED WITHIN THIS DOCUMENT IS BEING EXCLUSIVELY REPRESENTED BY DOUGLAS ELLIMAN REAL ESTATE COMMERCIAL DIVISION, 550 SMITHTOWN BYPASS STE. 117 SMITHTOWN, NY 11787 631.858.2405 © 2023 DOUGLAS ELLIMAN COMMERCIAL OF LI, LLC. ALL MATERIAL PRESENTED HEREIN IS INTENDED FOR INFORMATION PURPOSES ONLY. WHILE THIS INFORMATION IS BELIEVED TO BE CORRECT, IT IS REPRESENTED SUBJECT TO ERRORS, OMISSIONS, CHANGES OR WITHDRAWAL WITHOUT NOTICE. ALL PROPERTY INFORMATION, INCLUDING, BUT NOT LIMITED TO SQUARE FOOTAGE, ROOM COUNT, ZONING IN THE LISTING SHOULD BE VERIFIED BY YOUR OWN ATTORNEY, ARCHITECT OR ZONING EXPERT. IF YOUR PROPERTY IS CURRENTLY LISTED WITH ANOTHER REAL ESTATE BROKER, PLEASE DISREGARD THIS OFFER. IT IS NOT OUR INTENTION TO SOLICIT THE OFFERINGS OF OTHER REAL ESTATE BROKERS. WE COOPERATE WITH THEM FULLY. EQUAL HOUSING OPPORTUNITY.