

## **Warehouse Space For Lease**

# **LORTON, VIRGINIA**

**Exceptionally  
Clean, Newly  
Renovated  
Warehouse  
Space !!!**

## **7205 - 7207 LOCKPORT PLACE**



1. Loading Dock & Drive-in Bays
2. Excellent Tractor Trailer Access
3. Excellent Parking
4. Space is Exceptionally Clean
5. Minutes to Fairfax County Pkwy, Fort Belvoir, 95 and 495

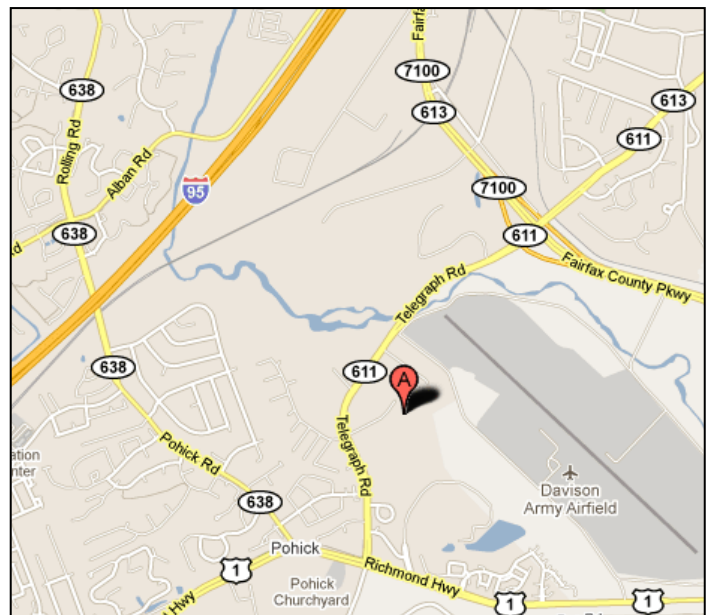
The following spaces are available in the above project:

**2,250 sf Drive-In Warehouse  
2,700 sf Loading Dock Warehouse**

**FOR MORE INFORMATION  
PLEASE CONTACT:**

**ROBERT BLUM**  
301-309-9500  
ROBERT@KOSSOWMANAGEMENT.COM

**ANDREW KOSSOW**  
301-309-9500  
ANDREW@KOSSOWMANAGEMENT.COM

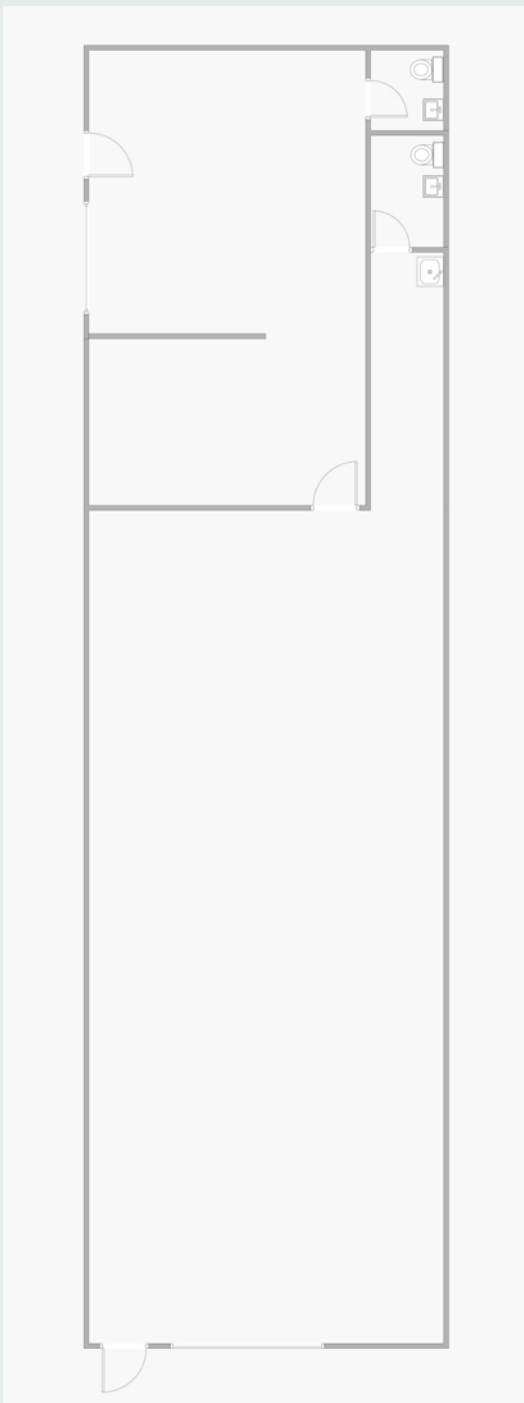


# **Kossow Management Corp.**

## **2,250 SF Drive-In Warehouse Available**

### **Warehouse Space Includes:**

- 1-2 Large Offices with Air Conditioning • 2 Private Restrooms • 16' Ceilings
- 10' Overhead Bay Door • Fluorescent Lighting • Warehouse Heating



\* Drawing not to scale



Warehouse Interior



Office Interior



Drive-In Access

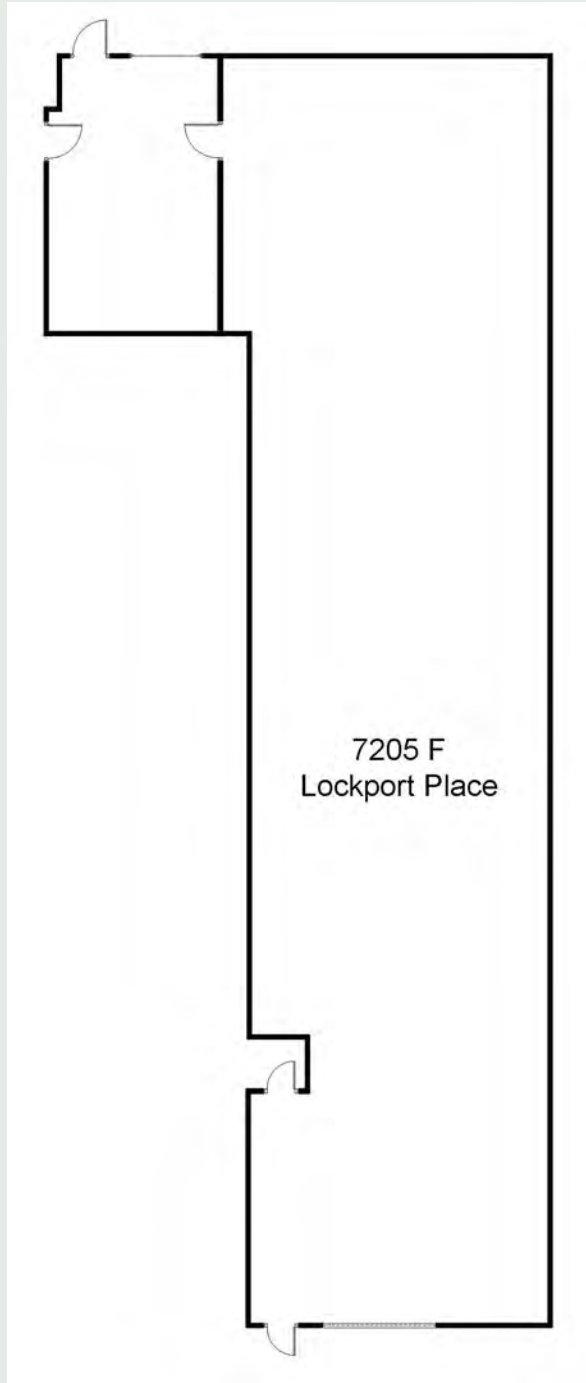
# **Kossow Management Corp.**

**(301) 309-9500**

# **3,550 SF Warehouse Available with Loading Dock**

## **Warehouse Space Includes:**

- Large Office with Floor-to-Ceiling Windows
- 10' Overhead Bay Door
- 16' Ceilings
- Fluorescent Lighting
- Gas Warehouse Heating



\* Drawing not to scale



Warehouse Interior



Front Office & Entry



Loading Dock Entrance

# **Kossow Management Corp.**

**(301) 309-9500**