

# Calaveras Center

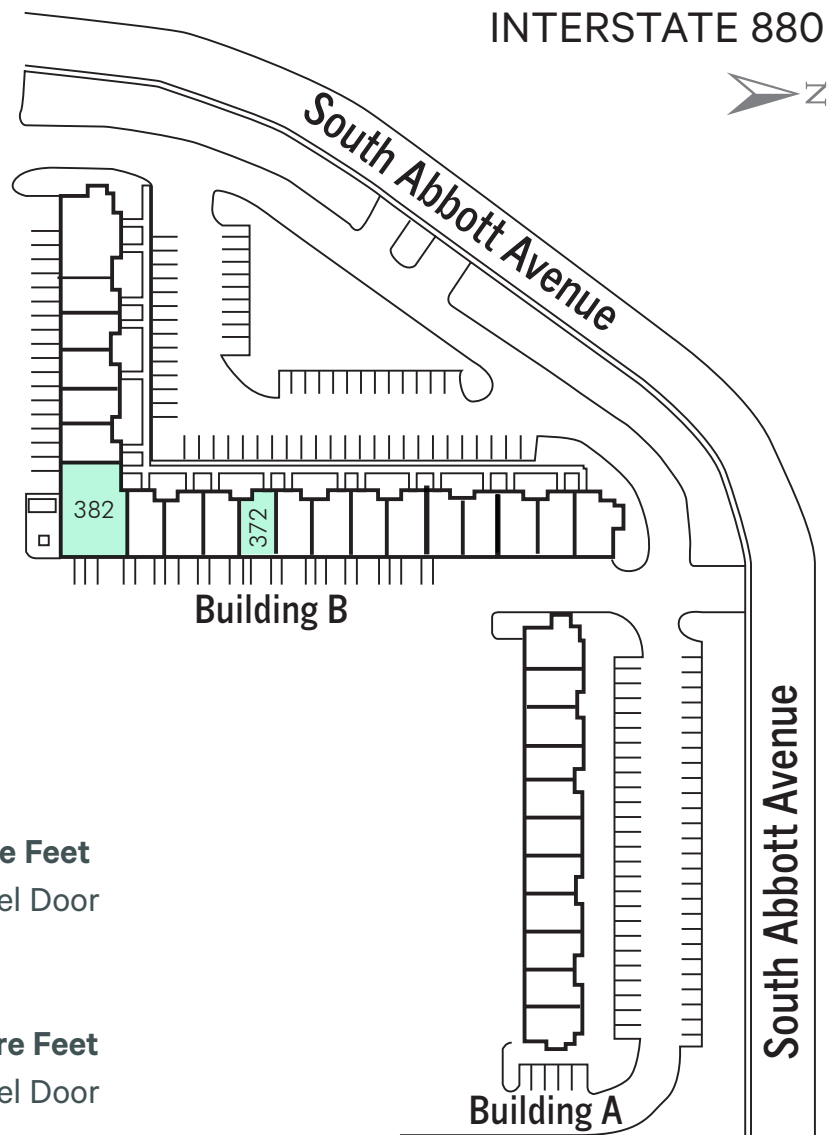
308-396 South Abbott Ave

Milpitas, CA 95035  
[www.cbre.com/siliconvalley](http://www.cbre.com/siliconvalley)

±1,078 - ±3,062 SF



## Site Plan



## Available Units

**372 South Abbott Avenue ±1,078 Square Feet**  
50% Office. 50% Warehouse. 1 Grade Level Door  
Occupied - Please call to tour

**382 South Abbott Avenue ±3,062 Square Feet**  
50% Office. 50% Warehouse. 1 Grade Level Door  
Available Now

NOT TO SCALE

## Property Features

- + ±1,078 - ±3,062 SF Available
- + Strategic location at Highway 237 and I-880
- + Easy arterial freeway access
- + ±50% office build-out
- + Grade-level loading
- + Minutes from numerous restaurants, shopping, hotels, and other amenities
- + Call to tour

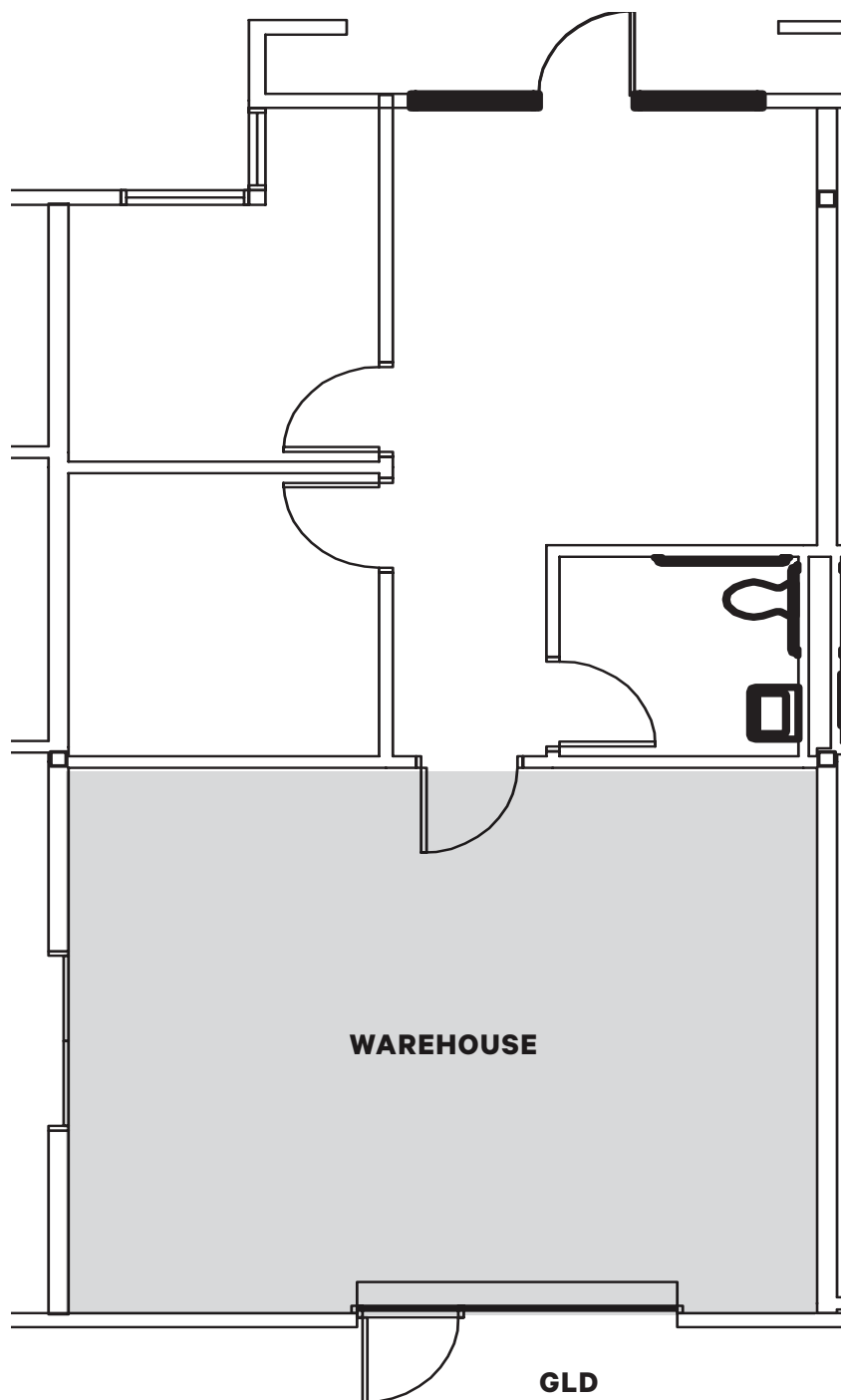
# Floorplan

---

## 372 South Abbott Avenue

±1,078 Square Feet

Occupied - Please call to tour



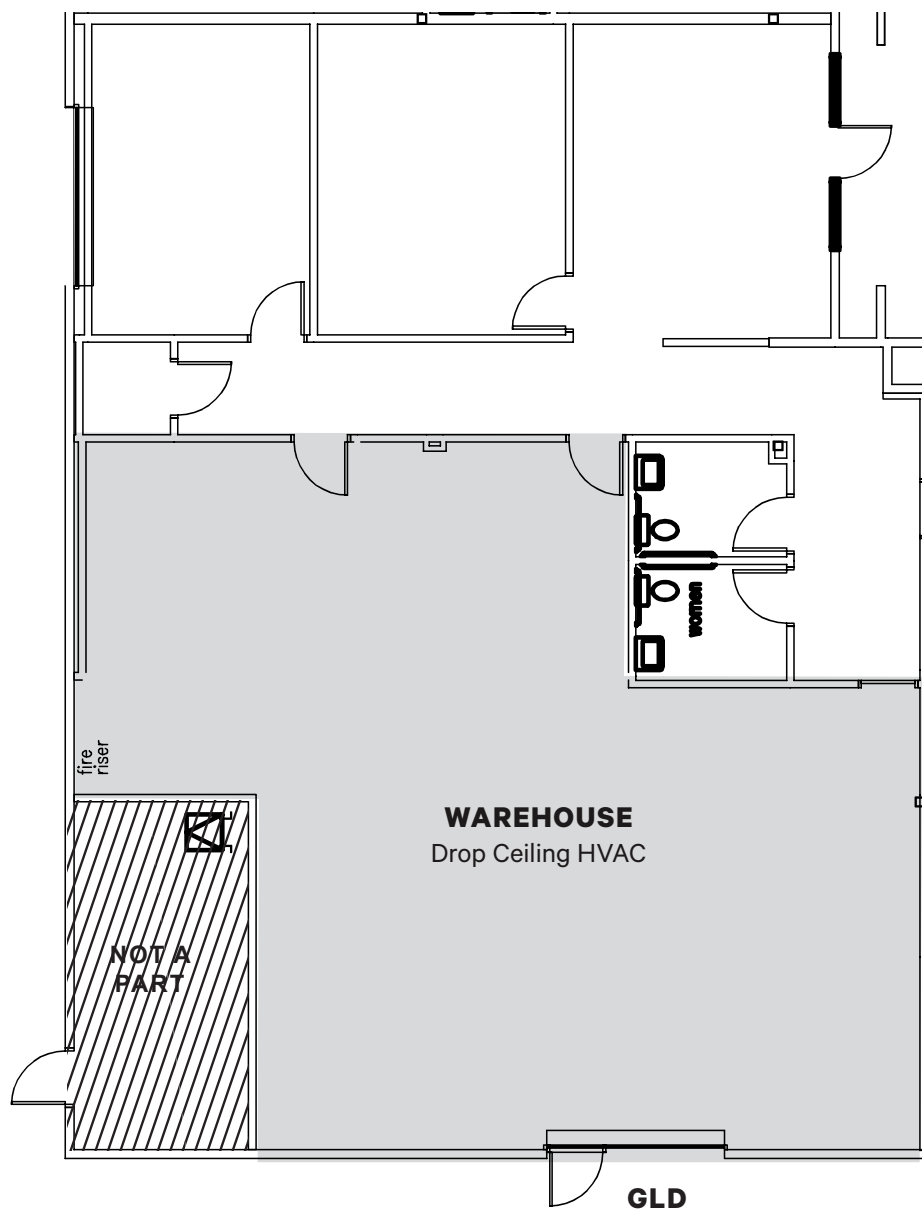
NOT TO SCALE

# Floorplan

## 382 South Abbott Avenue

±3,062 Square Feet

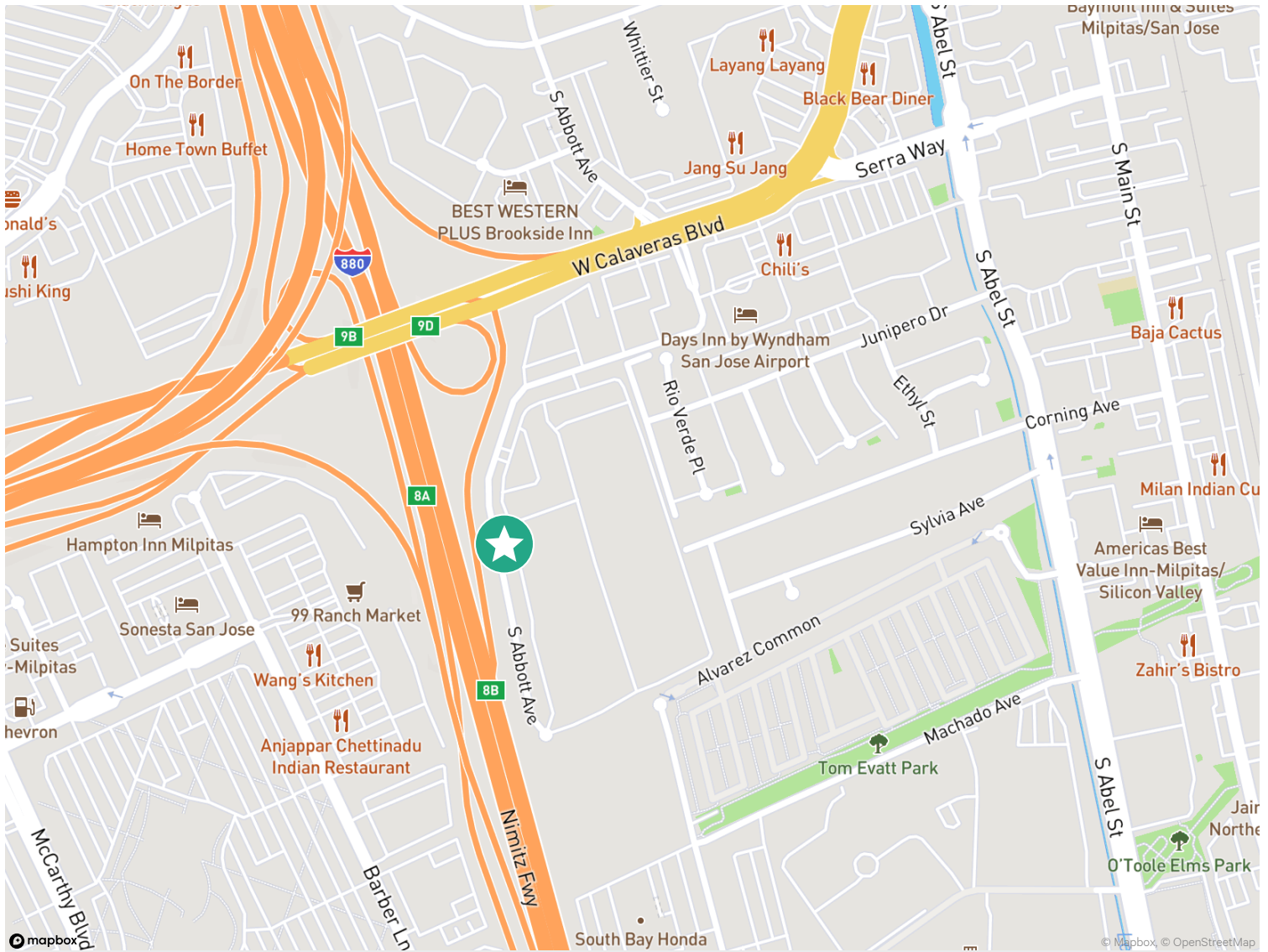
Available Now



NOT TO SCALE

# Calaveras Center, 308-396 South Abbott Ave

Milpitas, CA 95035



## Contact Us

### Paul Lyles

First Vice President  
+1 408 453 7443  
paul.lyles@cbre.com  
Lic. 01236021

© 2024 CBRE, Inc. All rights reserved. This information has been obtained from sources believed reliable but has not been verified for accuracy or completeness. CBRE, Inc. makes no guarantee, representation or warranty and accepts no responsibility or liability as to the accuracy, completeness, or reliability of the information contained herein. You should conduct a careful, independent investigation of the property and verify all information. Any reliance on this information is solely at your own risk. CBRE and the CBRE logo are service marks of CBRE, Inc. All other marks displayed on this document are the property of their respective owners, and the use of such marks does not imply any affiliation with or endorsement of CBRE. Photos herein are the property of their respective owners. Use of these images without the express written consent of the owner is prohibited.