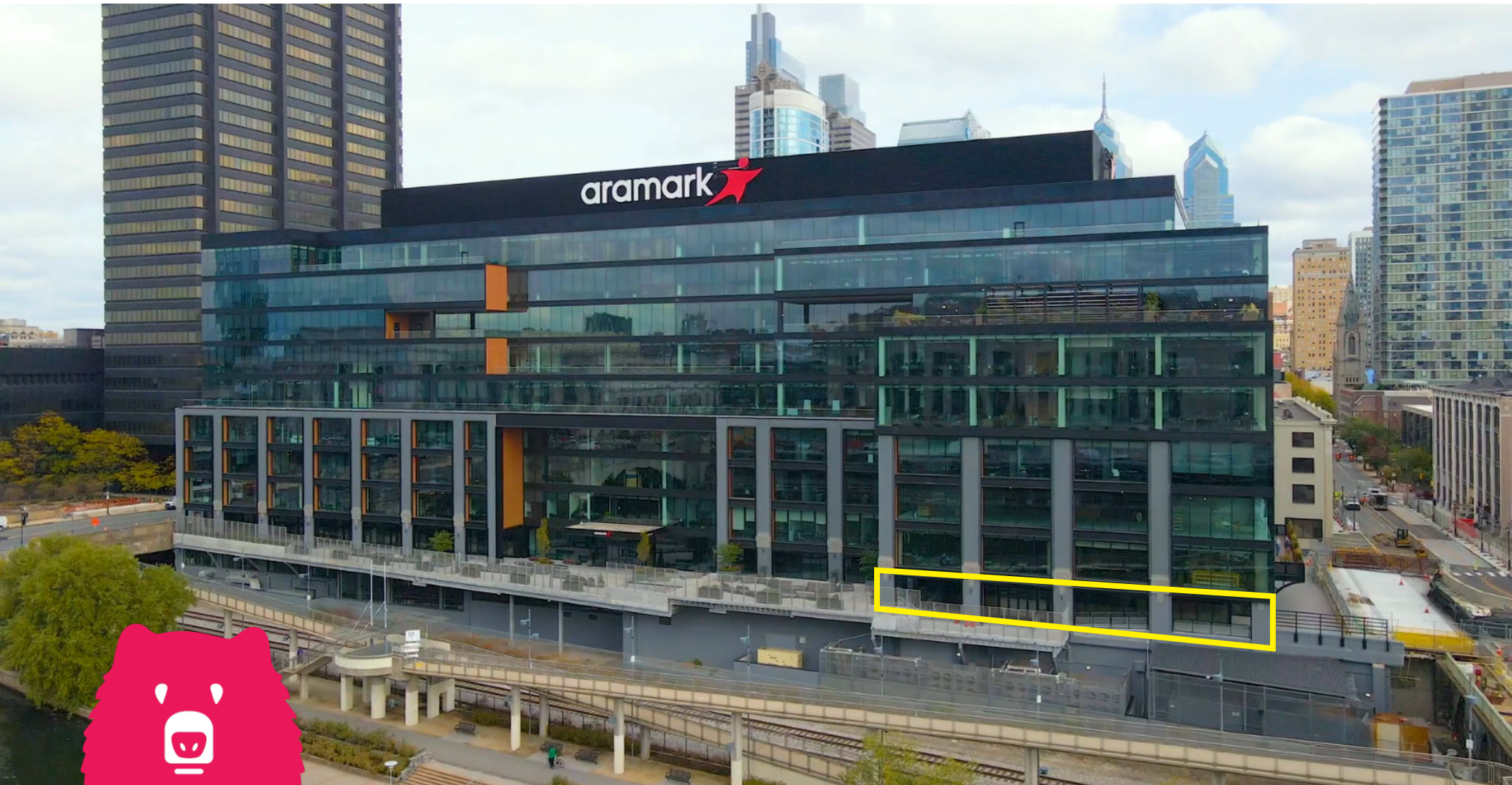


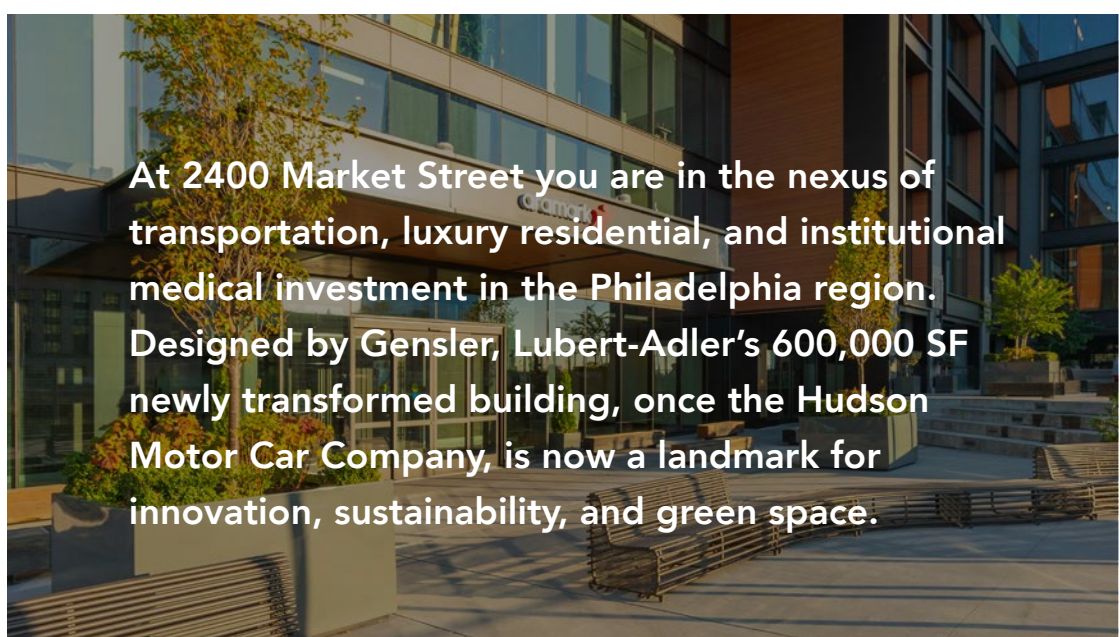
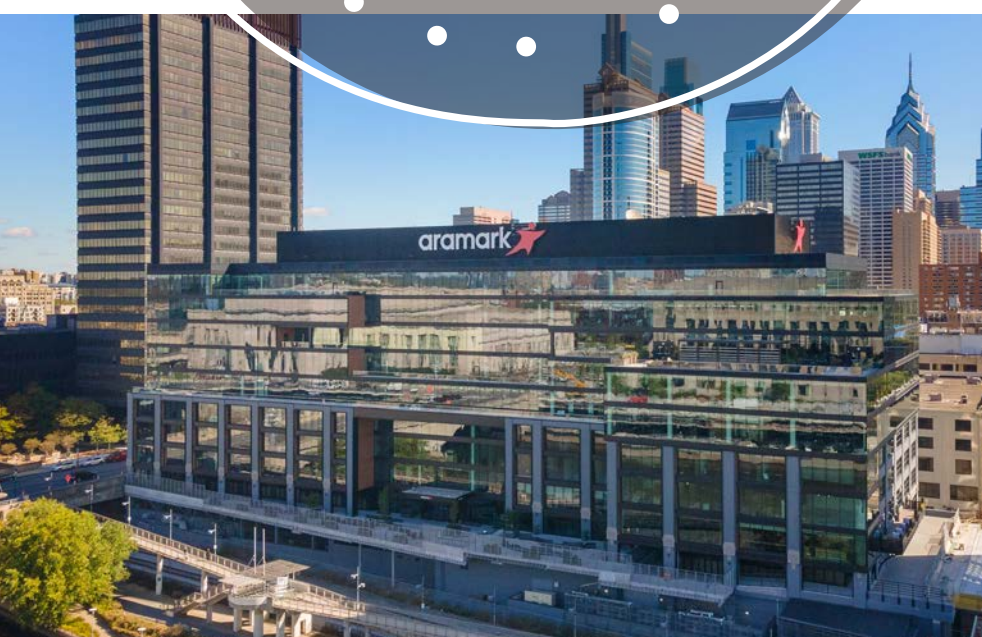
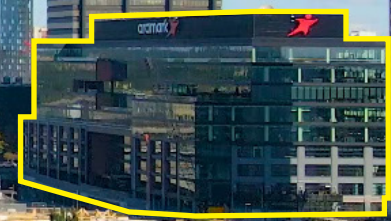
MSC



CENTER CITY / UNIVERSITY CITY | PHILADELPHIA, PA

2400 MARKET STREET

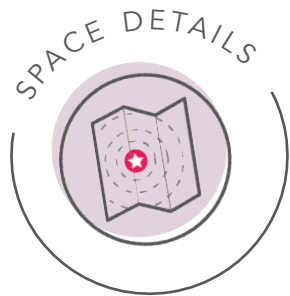
5,944 SF RETAIL / OFFICE SHOWROOM FOR LEASE



At 2400 Market Street you are in the nexus of transportation, luxury residential, and institutional medical investment in the Philadelphia region. Designed by Gensler, Lubert-Adler's 600,000 SF newly transformed building, once the Hudson Motor Car Company, is now a landmark for innovation, sustainability, and green space.

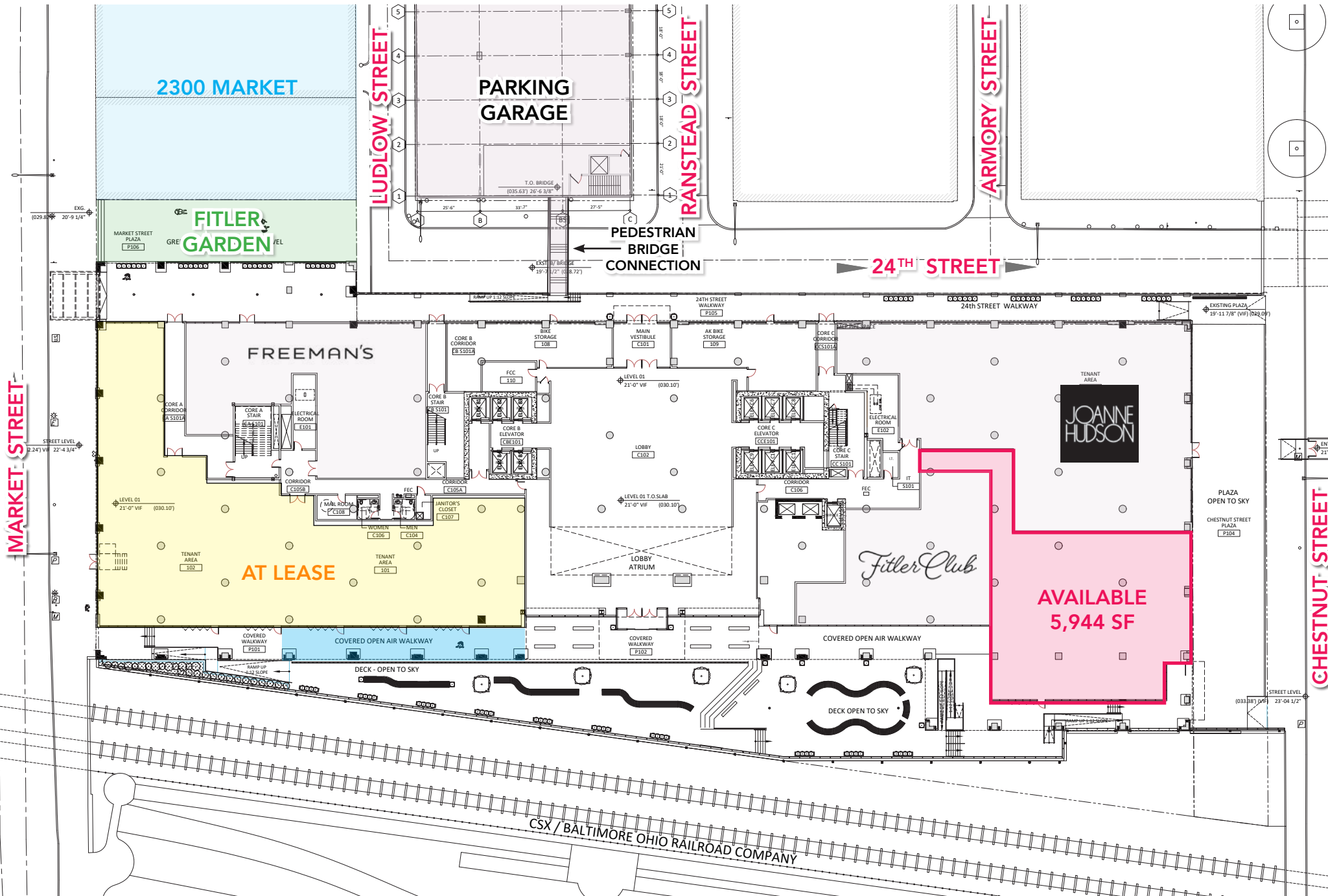


Restaurant / Retail / Showroom for Lease



- 5,944 SF space available facing the Schuylkill River, a designated PA Scenic River flowing from Pottsville to Philadelphia where it joins the historic Delaware
- Raw, untouched space with 16' ceilings and 1,000 SF of additional outdoor space
- Walk out onto an 8,000 SF promenade with unobscured views up, down, and across the River
- Steps from Amtrak's 3rd busiest rail station, 30th Street Station, which serves 4 million travelers per year
- Situated between Philadelphia's central business district and University City's hospitals, research centers and institutions
- In 2019 Aramark and Entercom Communications made 2400 Market their corporate headquarters

Site Plan



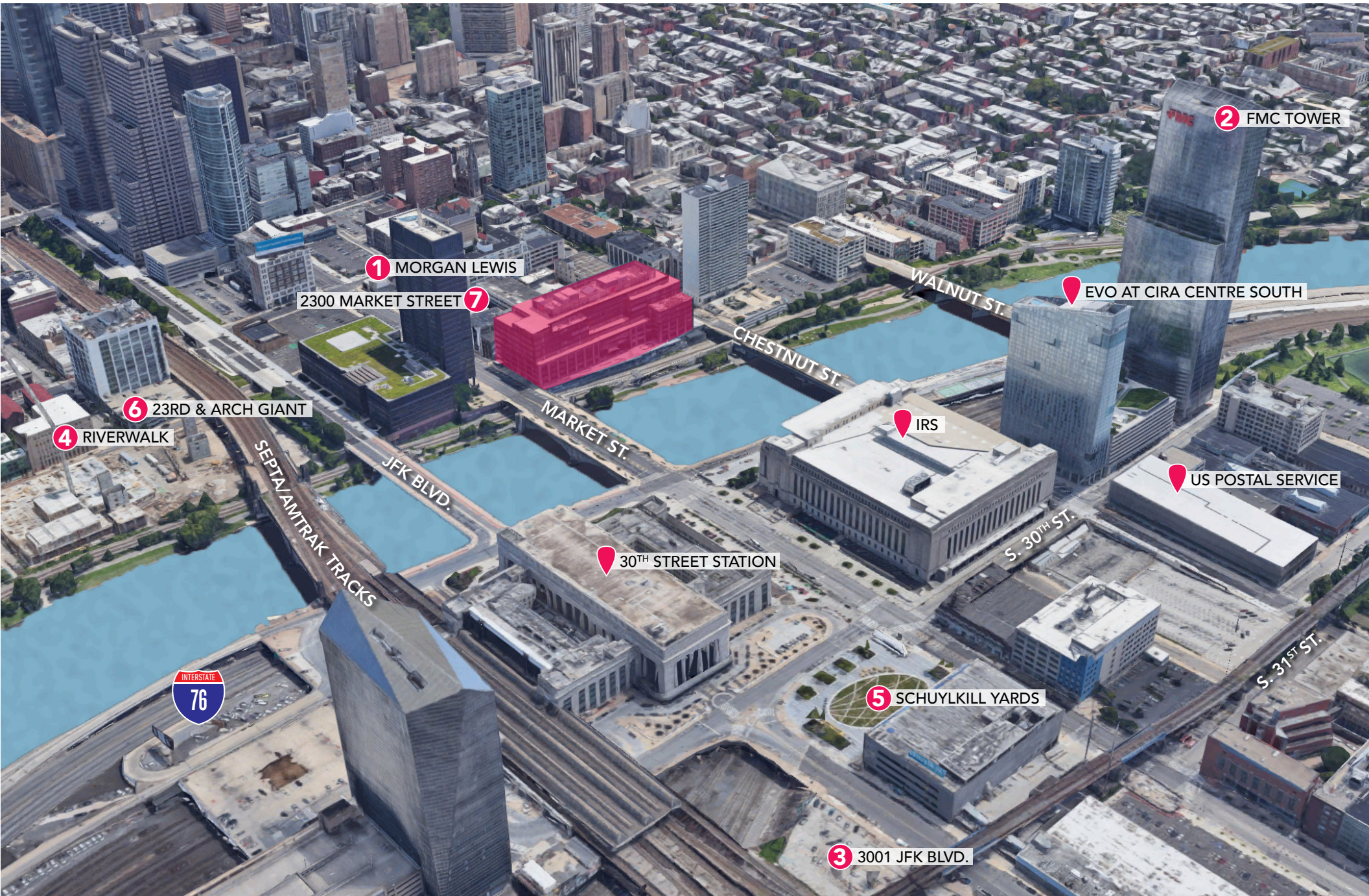
Commercial Unit South (Chestnut Street)



Covered Open Air Walkway (North Unit)



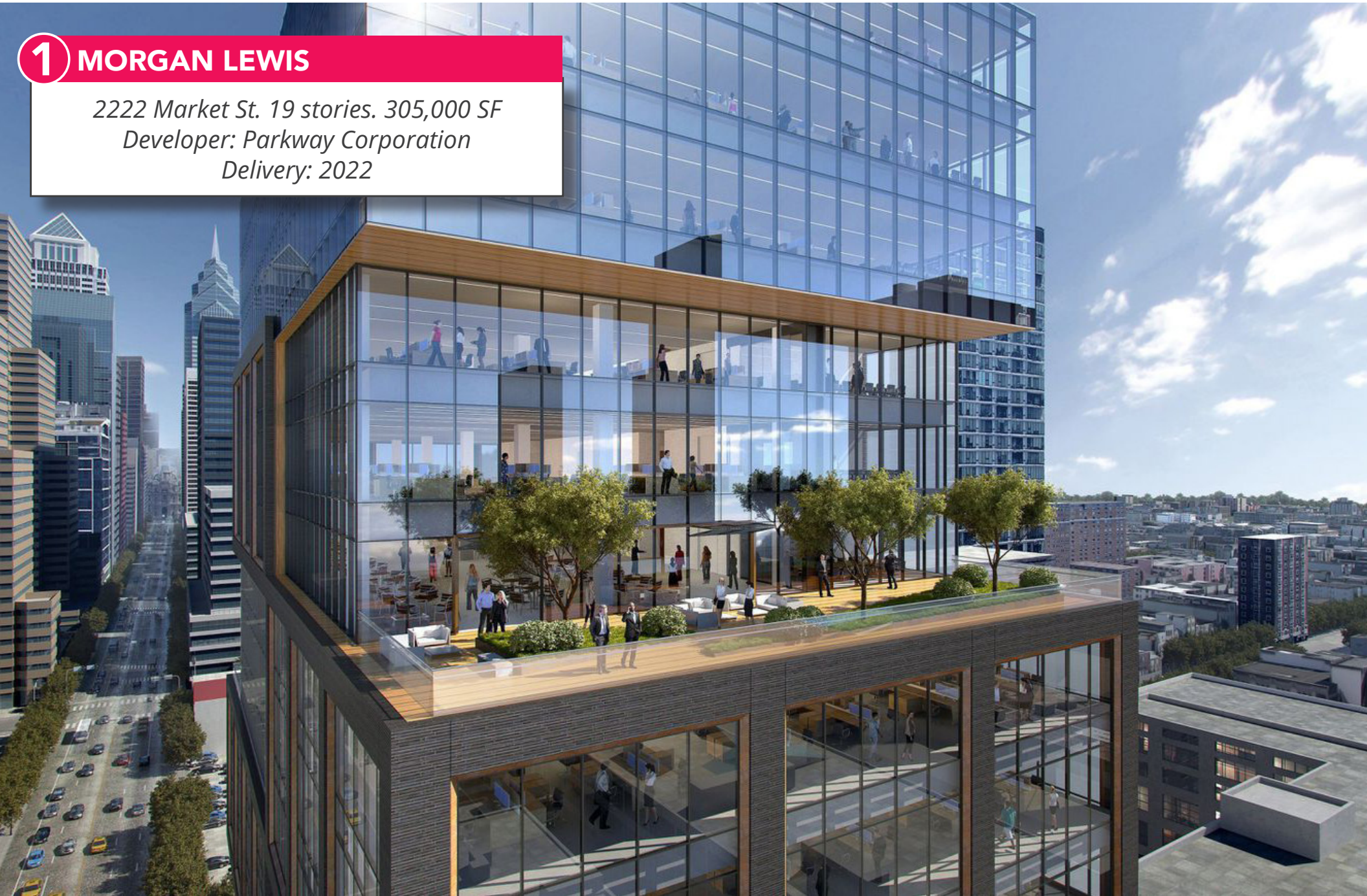
3D Aerial



Development Highlights

1 MORGAN LEWIS

2222 Market St. 19 stories. 305,000 SF
Developer: Parkway Corporation
Delivery: 2022



Development Highlights



2. FMC TOWER

2929 Walnut St. 49 stories. 622,000 SF
Developer: Brandywine Realty Trust
Delivery: 2017



3. 3001 JFK BOULEVARD

Part of Schuylkill Yards. 34 stories. 845,000 SF
Developer: Brandywine Realty Trust
Delivery: 2022



4. RIVERWALK

60 N 23rd St. and 2301 JFK Blvd.
28 and 32 story towers by PMC Property Group
Now Leasing



5. SCHUYLKILL YARDS

14 acre development around 30th Street Station
Developer: Brandywine Realty Trust
Delivery: 2020-2035



6. 23RD & ARCH GIANT

65,000 SF supermarket coming to PMC's
Riverwalk at 60 N 23rd St.
Delivery: 2021

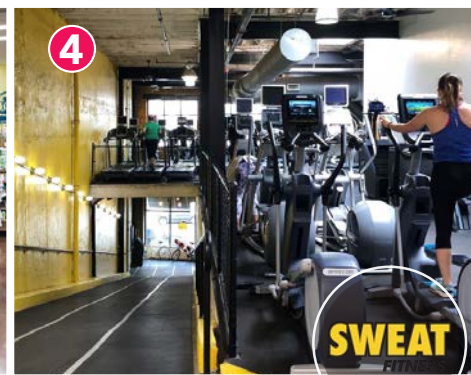


7. 2300 MARKET STREET*

12 stories, 50,000 - 75,000 SF commercial & 200-225
units. Developer: Lubert-Adler
Delivery: 2022

*2300 Market Street is only a concept rendering and not yet approved for final construction.

Join These Area Tenants



PHL NYC LA

For leasing inquiries, please contact:

Jacob Cooper jcooper@hellomsc.com 215.883.7402

Jonathan Makar jmakar@hellomsc.com 215.883.7382

MSC

aramark