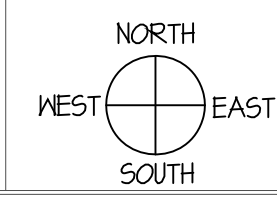


ENERGY / THERMAL KEYNOTES	
AREA	ACTION
NORTH WALL	
EAST WALL	
SOUTH WALL	
WEST WALL	
ROOF	
OVER DROP GRID	
EXPOSED DECK	

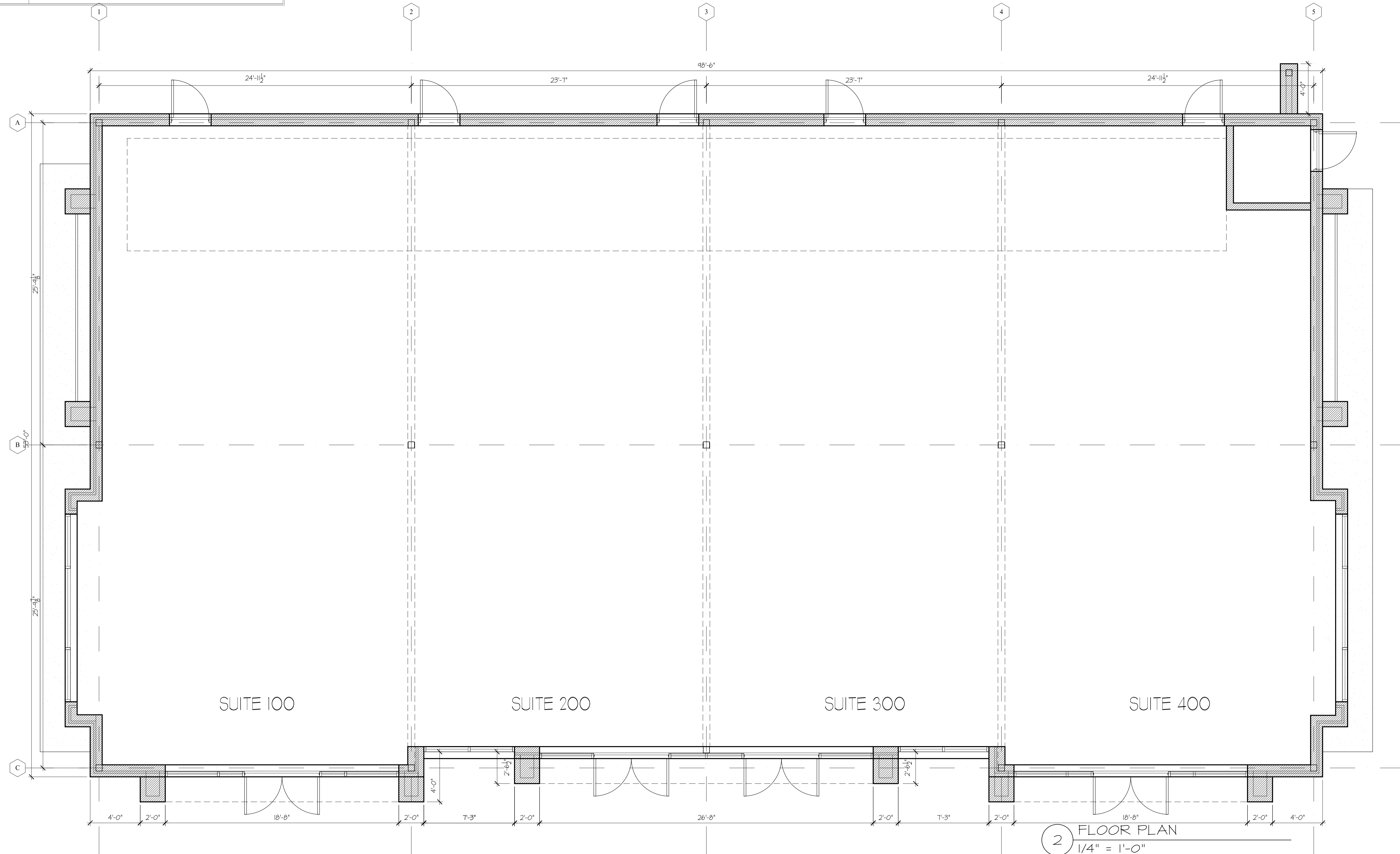


KEYNOTES	
NO.	DESCRIPTION
10	
11	
12	
13	
14	
15	

KEYNOTES	
NO.	DESCRIPTION
1	New ADA bathroom with complete fixtures.
2	New demising full-height wall. 1-hr rated.
3	New laminate bathroom counter with self-rimming sinks. Mount at 34" H.
4	New laminate break counter with self-rimming sink. Top at 34" H.
5	
6	
7	
8	
9	

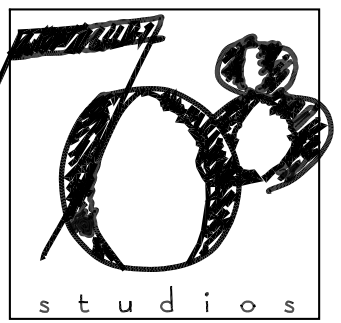
GENERAL NOTES	
NO.	DESCRIPTION
A.	All outlets to be mounted at 18" AFF, unless otherwise noted. Provide GFI outlets as required by code. Outlets shown are required, provide additional outlets for code compliance.
B.	Consult Architect upon the investigation of any condition inconsistent to the intent of these drawings.
C.	See typical detail of door frame adjacent to wall. Ref: I/A5.1
D.	Refer to 22 06 00 Plumbing Schedule for plumbing fixture & accessory types.
E.	All new walls, Type A, unless otherwise noted.

LEGEND			TYPE & NUMBER
SYMBOL	DEMO	EXIST.	NEW
[Hatched Box]	[Dashed Line]	[Solid Line]	Interior Partition
[Hatched Box]	[Dashed Line]	[Solid Line]	shown with Wall Type Tag
[Hatched Box]	[Dashed Line]	[Solid Line]	Interior Partial-Height Partition
[Hatched Box]	[Dashed Line]	[Solid Line]	shown with Wall Type Tag
[Dashed Arc]	[Solid Arc]	[Solid Arc]	Interior Door
[Dashed Arc]	[Solid Arc]	[Solid Arc]	shown with Door Tag
[Symbol]	[Symbol]	[Symbol]	Equipment
[Symbol]	[Symbol]	[Symbol]	shown with Equipment Tag
[Symbol]	[Symbol]	[Symbol]	Plumbing Fixtures
[Symbol]	[Symbol]	[Symbol]	Floor sink



2 FLOOR PLAN
1/4" = 1'-0"

BROWNGATE OFFICES
NE CORNER OF
W. BROWN STREET &
SANDEN BLVD.



CLARA CARLISLE
5000 Eldorado Pkwy, Suite 150
FRISCO, TX 75033
www.708STUDIOS.com
214.789.6196

These drawings were prepared by, and are the sole property of 708 STUDIOS, LLC. Unauthorized use or duplication of these drawings is prohibited by law and will subject the violator to damages under Title 17 United States Code and other applicable law.
Copyright by 708 STUDIOS, LLC.

PROFESSIONAL STAMPS:



REVISIONS:

JOB No.: 2007I

DATE: 5 OCT. 2020

FLOOR PLAN

A2.1