

INDUSTRIAL LAND FOR SALE

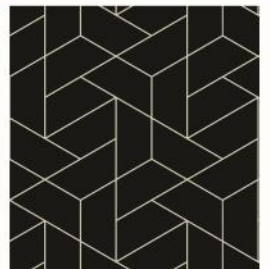
xxxx 215th Street W, Lakeville, MN 55044

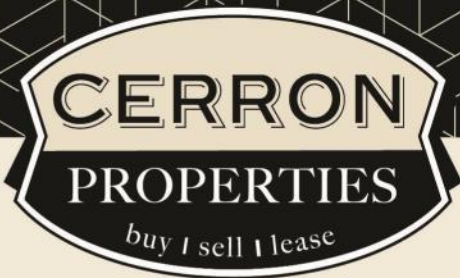


FOR SALE | INDUSTRIAL LAND



CERRON Commercial Properties, LLC | 21476 Grenada Avenue | Lakeville, MN 55044
WWW.CERRON.COM





CERRON Commercial Properties, LLC
21476 Grenada Avenue
Lakeville, MN 55044
www.CERRON.com

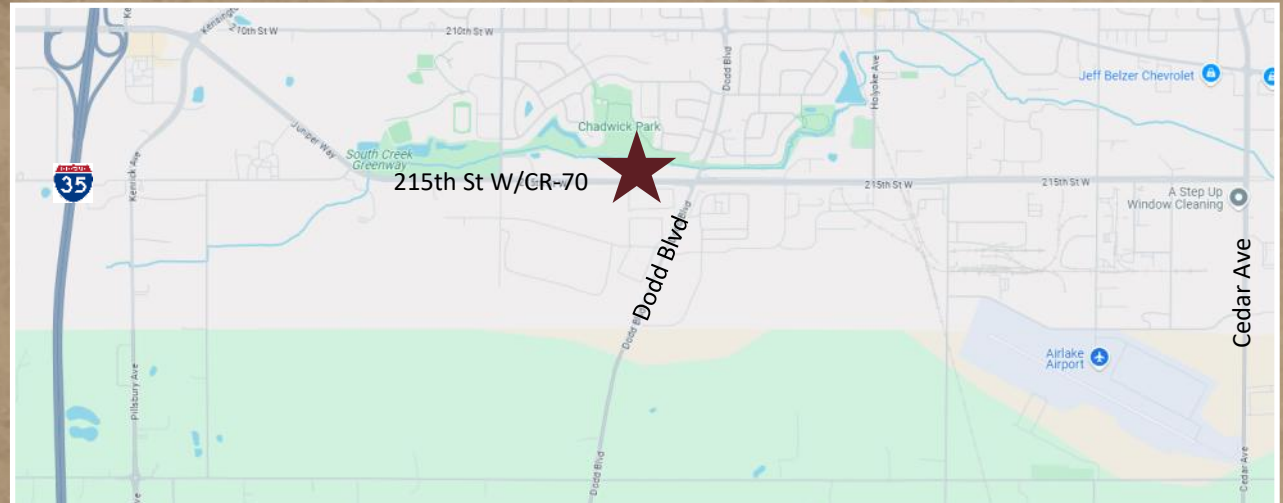
■ PROPERTY HIGHLIGHTS

- Approx. 3.29 Acres For Sale
- Est. buildable approx. 1.55 Acres
- Unplatted
- Zoned I-1 Light Industrial
- Property is in shore land overlay district
- Adjacent to Airlake Industrial Park
- Frontage on County Road 70
- Access from CR-70—right in / right out
- Dakota County PID # 22-16975-00-090
- 2025 Property Taxes—\$3,784
- Asking Price: \$395,000

INDUSTRIAL LAND

xxxx 215th Street W, Lakeville, MN 55044

FOR SALE | INDUSTRIAL LAND SITE



DISCLAIMER: The information contained herein is deemed reliable but is not guaranteed. We have not verified its accuracy nor do we make any warranty or representation about it. You and your tax and legal advisors should conduct your own investigation of the property and transaction.

For more information,
please contact:
Rocky Ranch
952.583.6135
rockyr@cerron.com

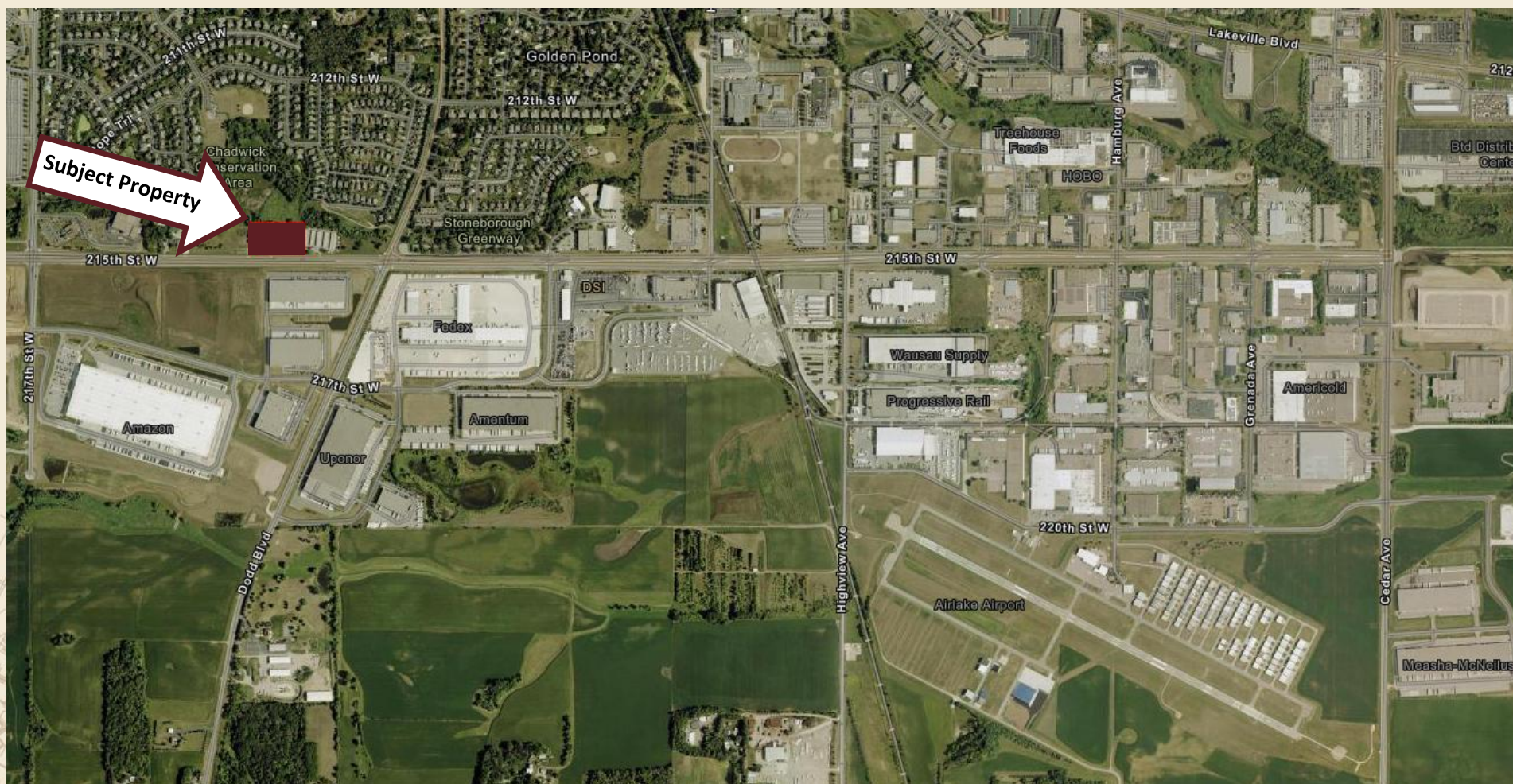


For more information,
please contact:
Bruce Rydeen
952.469.9444
brucer@cerron.com

AERIAL

INDUSTRIAL LAND

xxxx 215th Street W, Lakeville, MN 55044



DISCLAIMER: The information contained herein is deemed reliable but is not guaranteed. We have not verified its accuracy nor do we make any warranty or representation about it. You and your tax and legal advisors should conduct your own investigation of the property and transaction.

For more information,
please contact:
Rocky Ranch
952.583.6135
rockyr@cerron.com



For more information,
please contact:
Bruce Rydeen
952.469.9444
brucer@cerron.com

let's get started!

Bruce Rydeen | 952.469.9444 | brucer@cerron.com

CERRON Commercial Properties, LLC | 21476 Grenada Avenue | Lakeville, MN 55044

Rocky Ranch | 952.583.6135 | rockyr@cerron.com



WWW.CERRON.COM