

GROUND LEASE OPPORTUNITY

3807 W. SIERRA HWY., ACTON, CA 93510



Neighboring



Property Information

Location: 3807 W. Sierra Hwy.
Acton, CA 93510

Size: Approx. 26,000 sq.ft.

Rent: Negotiable

Available: Immediately

Property Highlights

- Abundant parking spaces
- Convenient access to Fwy 14
- Neighboring tenants include print shop, convenience store, Mexican restaurant, real estate office, law office, and etc.

For More Information, Contact:

CNC properties
2560 W. Olympic Blvd.
Suite 204
Los Angeles, CA 90006
www.cnccre.com

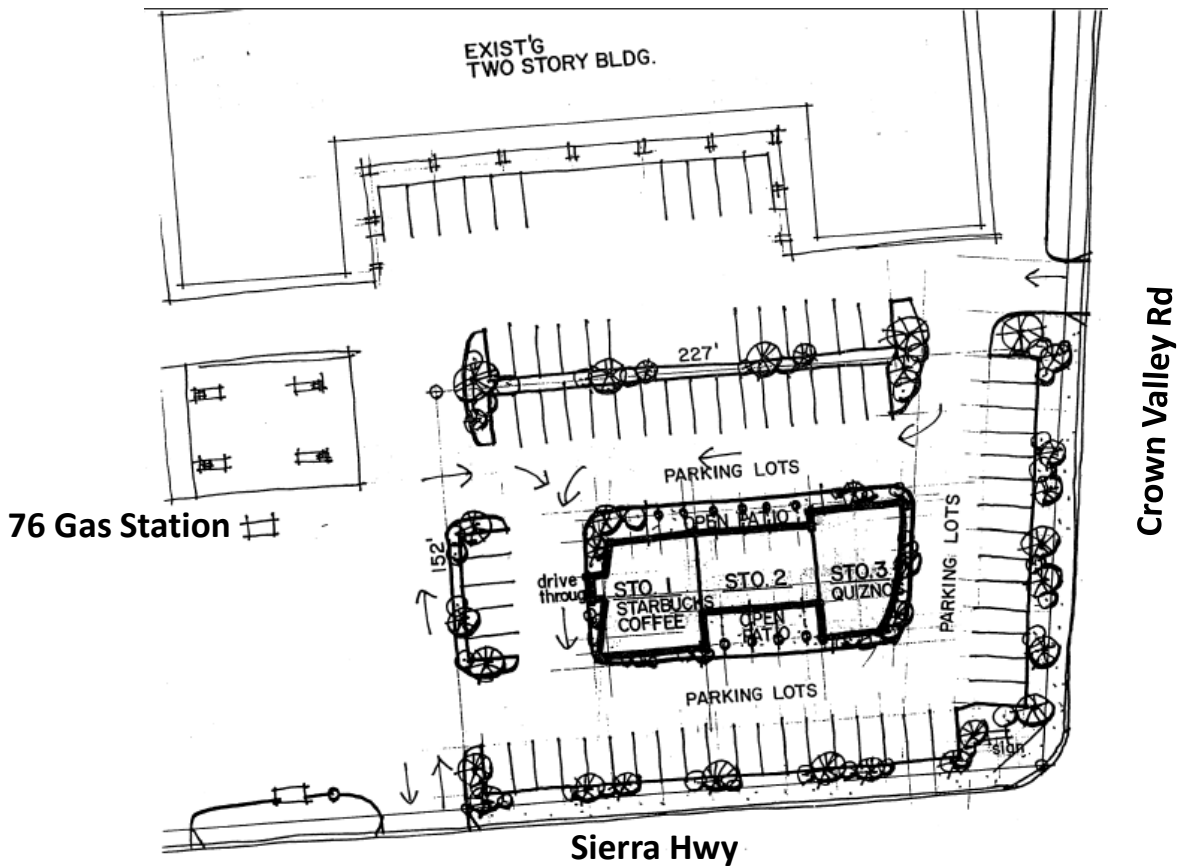
Howard Chang
213.788.3357
hchang@cnccre.com
CA BRE Lic # 01700619

Michael Cho
213.788.3357
mcho@cnccre.com
CA BRE Lic # 01779527

GROUND LEASE OPPORTUNITY

3807 W. SIERRA HWY., ACTON, CA 93510

Sample Site Plan



For More Information, Contact:

CNC properties
2560 W. Olympic Blvd.
Suite 204
Los Angeles, CA 90006
www.cnccre.com

Howard Chang
213.788.3357
hchang@cnccre.com
CA BRE Lic # 01700619

Michael Cho
213.788.3357
mcho@cnccre.com
CA BRE Lic # 01779527

GROUND LEASE OPPORTUNITY

3807 W. SIERRA HWY., ACTON, CA 93510

Sample Elevation Plan



For More Information, Contact:

CNC properties
2560 W. Olympic Blvd.
Suite 204
Los Angeles, CA 90006
www.cnccre.com

Howard Chang
213.788.3357
hchang@cnccre.com
CA BRE Lic # 01700619

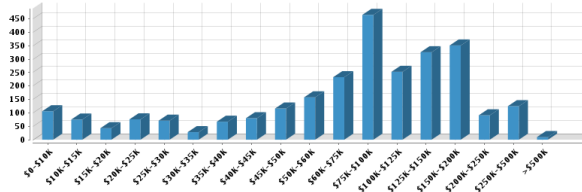
Michael Cho
213.788.3357
mcho@cnccre.com
CA BRE Lic # 01779527

GROUND LEASE OPPORTUNITY

3807 W. SIERRA HWY., ACTON, CA 93510

Demographic Summary Report

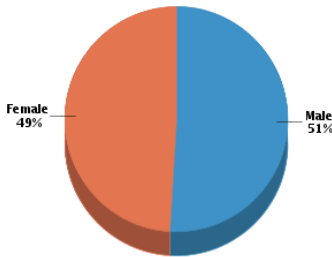
Household Income



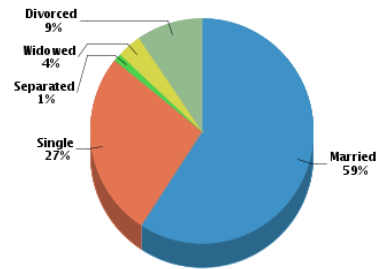
Average Household Income: \$104,044

Average Per Capita Income: \$36,193

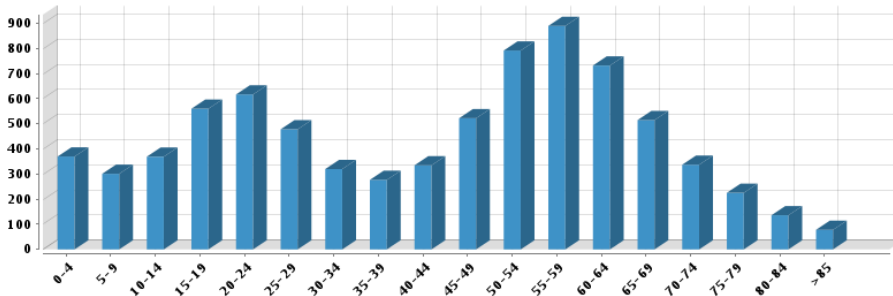
Gender



Marital Status



Age



For More Information, Contact:

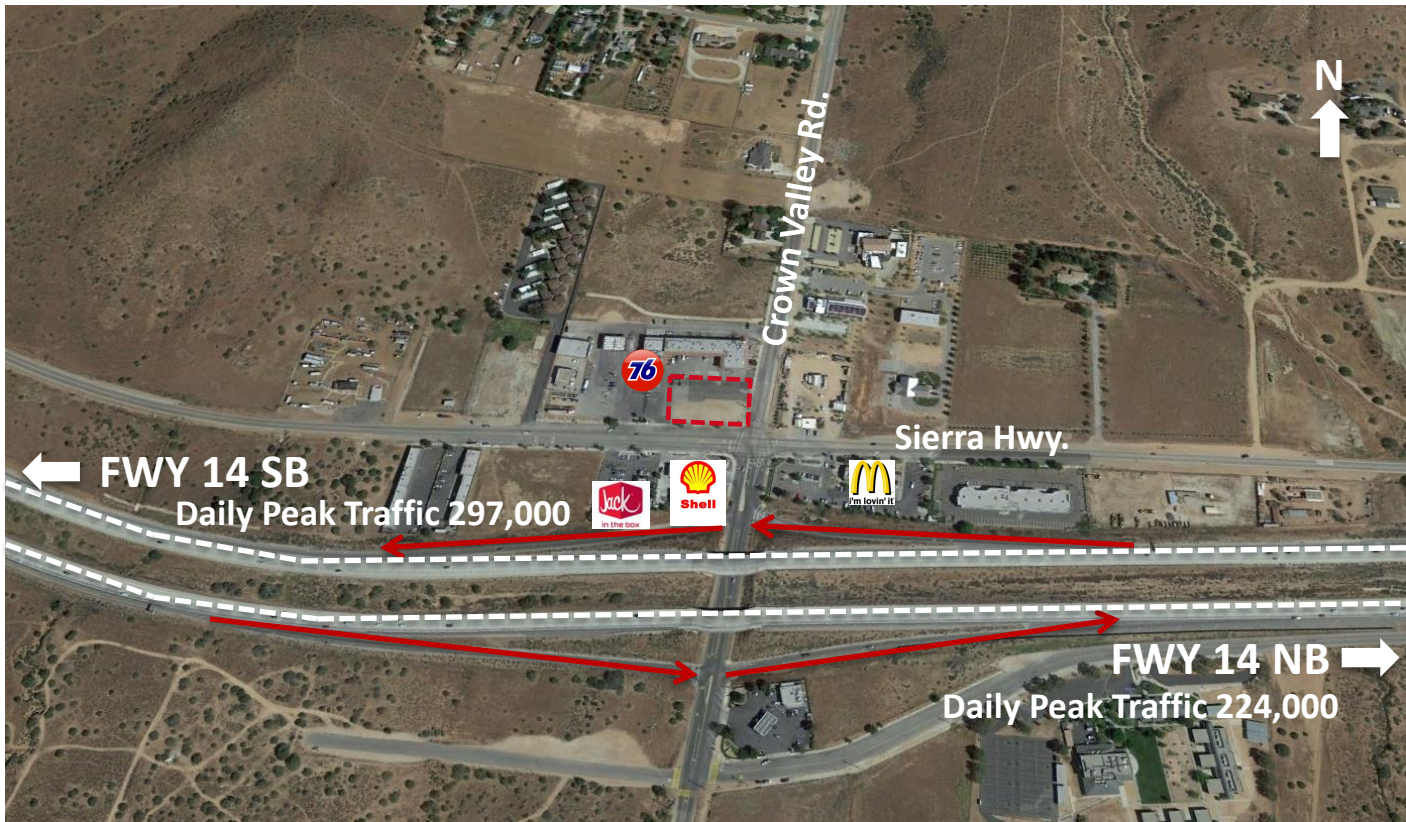
CNC properties
2560 W. Olympic Blvd.
Suite 204
Los Angeles, CA 90006
www.cnccre.com

Howard Chang
213.788.3357
hchang@cnccre.com
CA BRE Lic # 01700619

Michael Cho
213.788.3357
mcho@cnccre.com
CA BRE Lic # 01779527

GROUND LEASE OPPORTUNITY

3807 W. SIERRA HWY., ACTON, CA 93510



For More Information, Contact:

CNC properties
2560 W. Olympic Blvd.
Suite 204
Los Angeles, CA 90006
www.cnccre.com

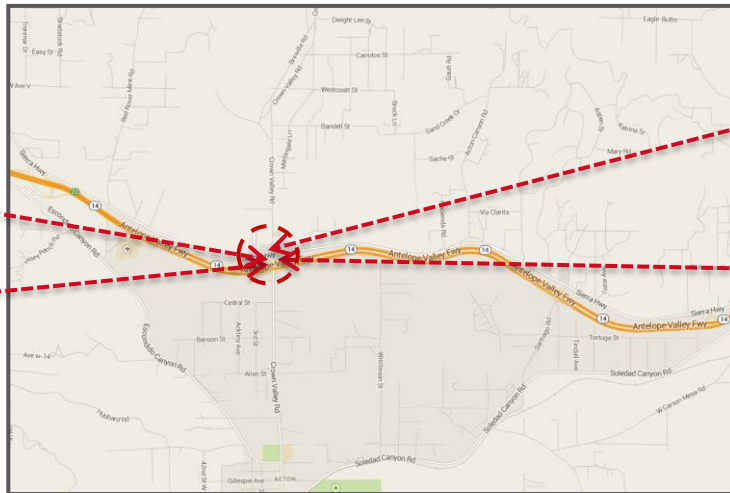
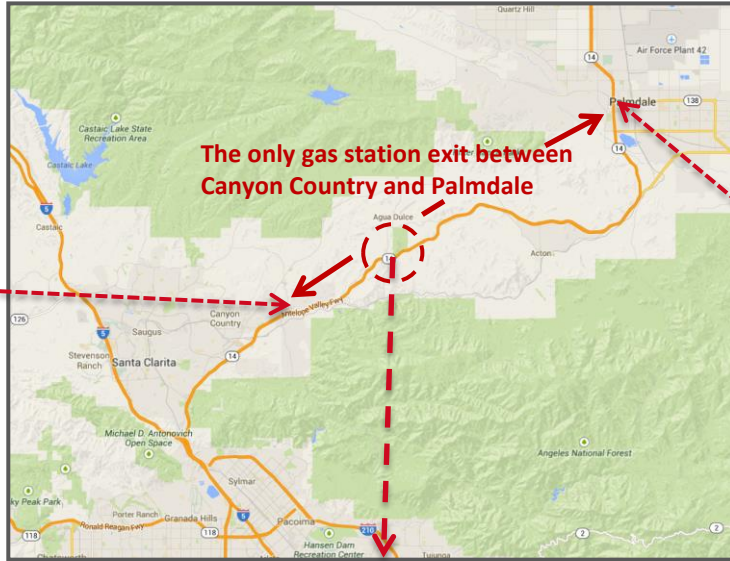
Howard Chang
213.788.3357
hchang@cnccre.com
CA BRE Lic # 01700619

Michael Cho
213.788.3357
mcho@cnccre.com
CA BRE Lic # 01779527

GROUND LEASE OPPORTUNITY

3807 W. SIERRA HWY., ACTON, CA 93510

Property Location



For More Information, Contact:

CNC properties
2560 W. Olympic Blvd.
Suite 204
Los Angeles, CA 90006
www.cnccre.com

Howard Chang
213.788.3357
hchang@cnccre.com
CA BRE Lic # 01700619

Michael Cho
213.788.3357
mcho@cnccre.com
CA BRE Lic # 01779527