

3 FULL FLOORS WITH INCREDIBLE
LIGHT & VIEWS AT THE CORNER
OF CHURCH STREET



9th Floor | 10th Floor | 11th Floor

THIRTY VESEY

ENTIRE 9TH FLOOR

Size.....4,826 RSF
Term.....Negotiable
Possession...January 2025
Asking Rent.....\$50/RSF

NOTES:

- Creative full floor with incredible light and views
- Wood floors and exposed ceiling
- 4 conference rooms, 5 offices, open bullpen seating, wet pantry
- Tenant-controlled HVAC
- Well-maintained attended lobby with new elevator cabs

ENTIRE 10TH FLOOR

Size.....4,826 RSF
Term.....Negotiable
Possession...January 2025
Asking Rent.....\$50/RSF

NOTES:

- Creative full floor with incredible light and views
- Exposed ceilings and carpet
- Mostly open bullpen seating with 1 conference room, 1 office and a wet pantry
- Tenant-controlled HVAC
- Well-maintained attended lobby with new elevator cabs

ENTIRE 11TH FLOOR

Size.....4,826 RSF
Term.....Negotiable
Possession...January 2025
Asking Rent.....\$55/RSF

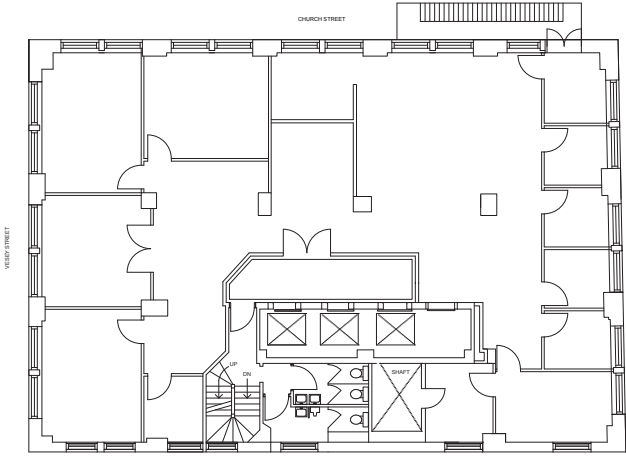
NOTES:

- Creative full floor with incredible light and views
- Wood floors and exposed ceiling
- 1 conference room, 1 breakout room, open bullpen seating, large communal wet pantry
- Tenant-controlled HVAC
- Well-maintained attended lobby with new elevator cabs

11th Floor

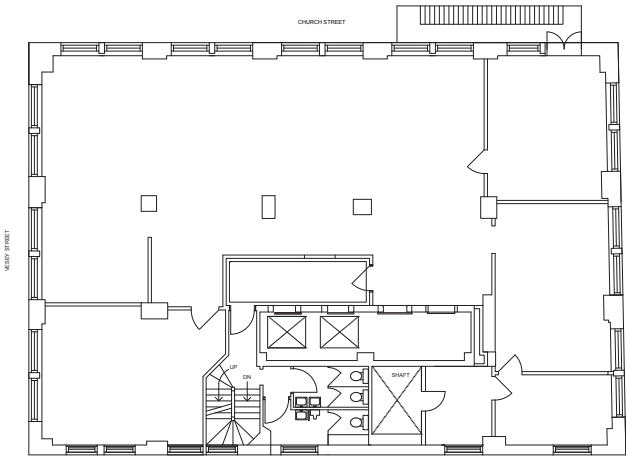


ENTIRE 9TH FLOOR



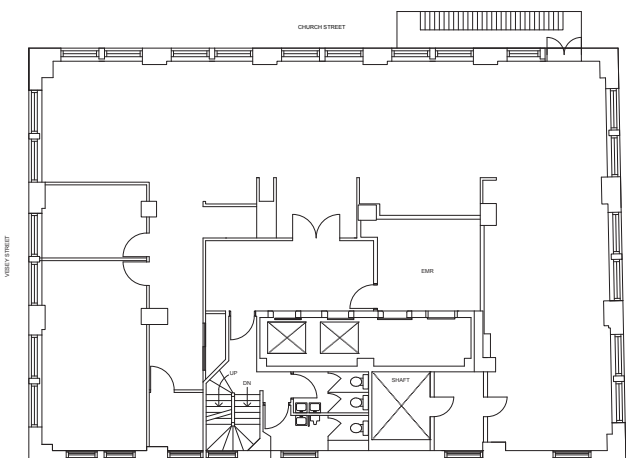
11th Floor

ENTIRE 10TH FLOOR



9th Floor

ENTIRE 11TH FLOOR



9th Floor

THIRTY VESEY





11th Floor



9th Floor



11th Floor

THIRTY VESEY

PLEASE CONTACT:

James Costello
646.599.2391
james@sinvin.com