

# 180 NEWPORT CENTER DR

NEWPORT BEACH

- ★ OCEAN VIEW SUITE
- ★ NEWPORT CENTER DRIVE SIGNAGE AVAILABLE
- ★ ON-SITE AND RESERVED PARKING AVAILABLE

NOW LEASING

## MEDICAL/OFFICE SPACE

LEASED BY:

**RW** REDWOOD  
WEST

WELCOME TO

# 180 NEWPORT CENTER DRIVE

180 Newport Center Drive is a professional and medical office building in the heart of Newport Center - Newport Beach's premiere business, shopping and entertainment district. Situated across the street from Fashion Island Mall, 180 Newport Center Drive draws a strong daytime population of business professionals, international tourists and affluent homeowners.



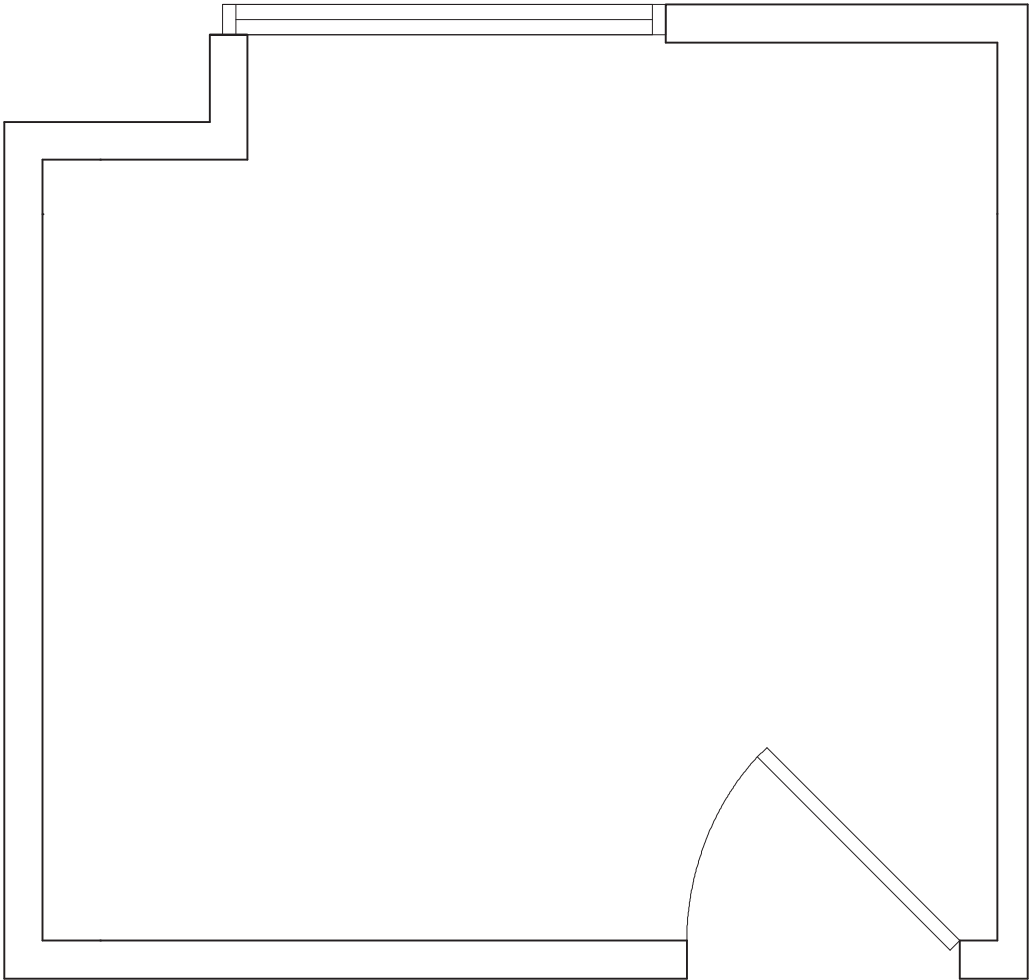
180 NEWPORT CENTER DRIVE

AVAILABLE SPACE FLOOR PLANS

# Suite 219

+/- 130 SF

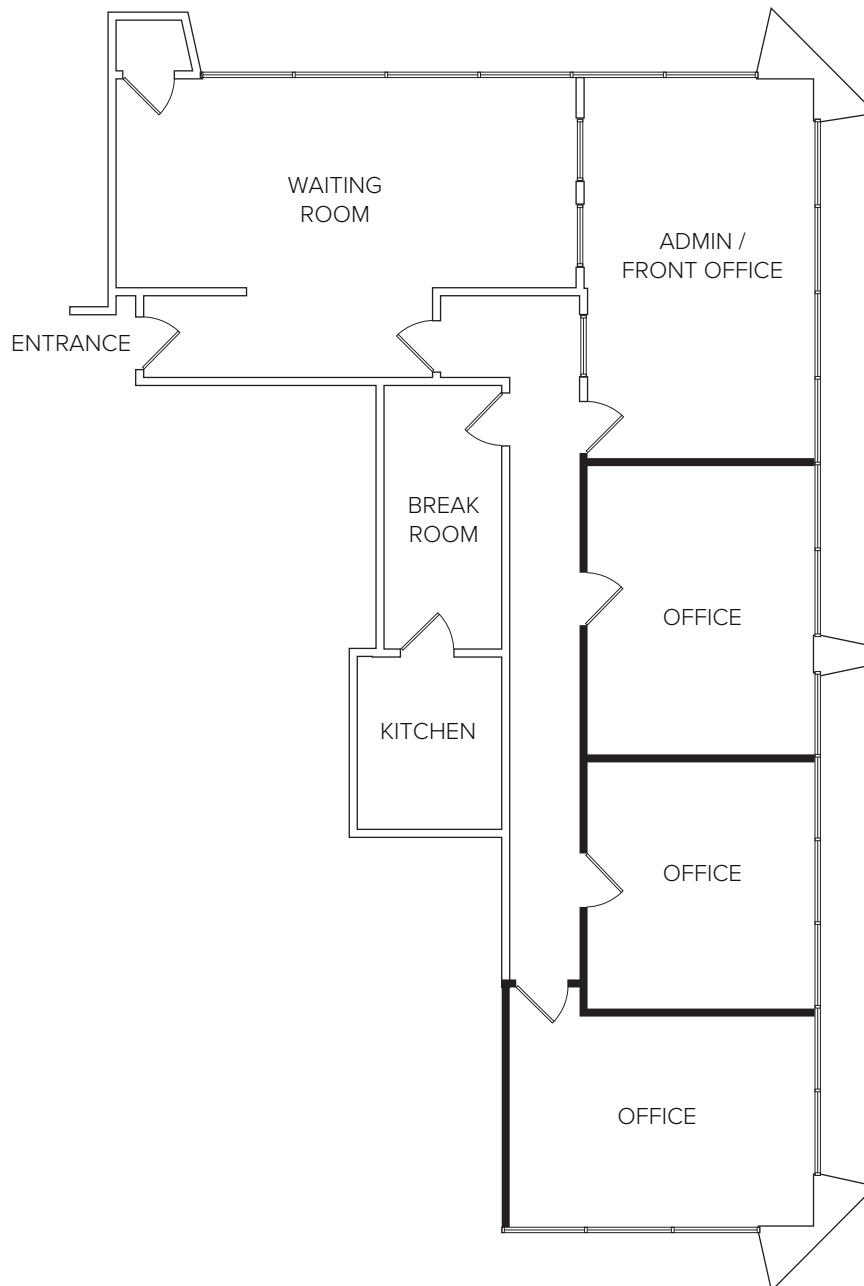
AVAILABLE 11/1/25  
WITH 30 DAY NOTICE



# Suite 235

+/- 2,500 - 2,750 SF

- OCEAN VIEW SUITE
- NEWPORT CENTER DRIVE SIGNAGE AVAILABLE
- ON-SITE AND RESERVED PARKING AVAILABLE
- PRIVATE RESTROOM





JOHN WAYNE  
AIRPORT (SNA)

NEWPORT  
BACK BAY

FASHION ISLAND  
SHOPPING CENTER

NEWPORT CENTER  
DRIVE

180 NEWPORT CENTER DR



JOEY NEWPORT BEACH



# The *Features* & Amenities



## FEATURED LOCATION **JOEY RESTAURANTS**

In the heart of Orange County's luxury shopping destination, Fashion Island, JOEY Newport Beach is an opulent oasis. The space features a gallery wall highlighting several hand-picked local artists and a unique Bocci light installation. Boasting 9,367 square feet, it includes an open patio which features a bar and retractable sections of roof, providing coverage and the ability to open to the day or evening sky. A large-scale outdoor fire pit offers guests an inviting lounge area, this space is the perfect place to enjoy a glass of well-deserved champagne fireside after a day of shopping.

- Prestigious Newport Beach Address
- Ocean views & wall-to-wall windows
- Exclusive parking garage with convenient and ample surface parking
- Low rise setting with multiple entry points & high-end common areas
- Convenient access to the 55 & 73 freeways and PCH
- Walking distance to Fashion Island dining, shopping, & entertainment
- Elevator Service

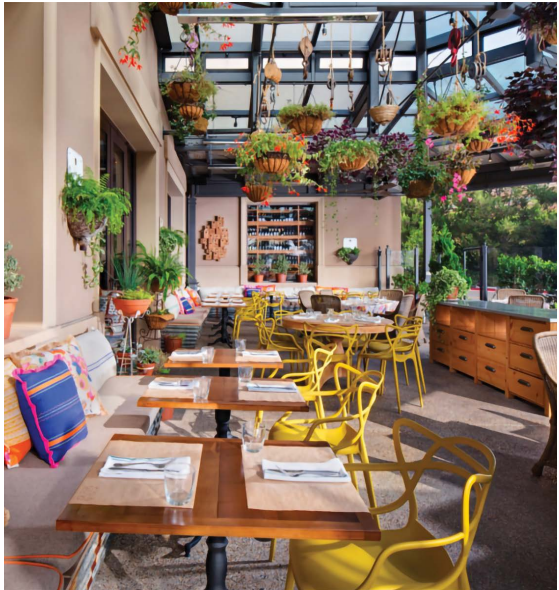


JOEY NEWPORT BEACH

NEIGHBORHOOD HOT SPOTS



GULFSTREAM



CUCINA ENOTECA



RED O

# 180 NEWPORT CENTER DR

NEWPORT BEACH

*For more information, please contact:*

**John Pomer**

949.945.2649

john@redwoodwest.com

Lic. #01440689

**Ben Gott**

949.945.2648

ben@redwoodwest.com

Lic. #01724507

**Christian Heffelman**

949.945.2645

christian@redwoodwest.com

Lic. #02101426

**Julie Johnson**

949.945.2644

julie@redwoodwest.com

Lic. #02156626



LEASED BY:

**RW** | REDWOOD  
WEST

The information contained in this document has been obtained from sources believed reliable. While Redwood West does not doubt its accuracy, Redwood West has not verified it and makes no guarantee, warranty or representation about it. It is your responsibility to independently confirm its accuracy and completeness. You and your advisors should conduct a careful, independent investigation of the property to determine your satisfaction to the suitability of the property for your needs.