



570 STEELE DRIVE

HAMPTON, GA
30228

Industrial Property For Lease
7,200+/- SF Warehouse Building

BRYAN MARSHBURN, SIOR, CCIM
Senior Vice President
404.942.2044
bmarshburn@kingindustrial.com

King *Industrial
Realty, Inc.*

Industrial • Commercial • Investment
404.942.2000 | kingindustrial.com

FOR LEASE
7,200+/- SF
6.05+/- ACRES



PROPERTY HIGHLIGHTS

- 7,200+/- SF Building on 6.05+/- Acres
- (6) 14' Drive-In Doors with 3 Drive-Thru Bays
- 56 Tractor Trailer Positions
- 14 Auto Positions
- Available September 1, 2024
- 1.2+/- Miles to US 19/41
- 9.9+/- Miles to I-75
- 18+/- Miles to I-285
- 19+/- Miles to Hartsfield-Jackson International Airport

OFFERING SUMMARY

Building Size:	7,200 SF
Zoning:	M-1

BRYAN MARSHBURN, SIOR, CCIM

Senior Vice President

404.942.2044

bmarshburn@kingindustrial.com

Every effort has been made to provide accurate information, but no liability is assumed for errors or omissions.



Industrial • Commercial • Investment
404.942.2000 | kingindustrial.com

ADDITIONAL PHOTOS



BRYAN MARSHBURN, SIOR, CCIM

Senior Vice President

404.942.2044

bmarshburn@kingindustrial.com

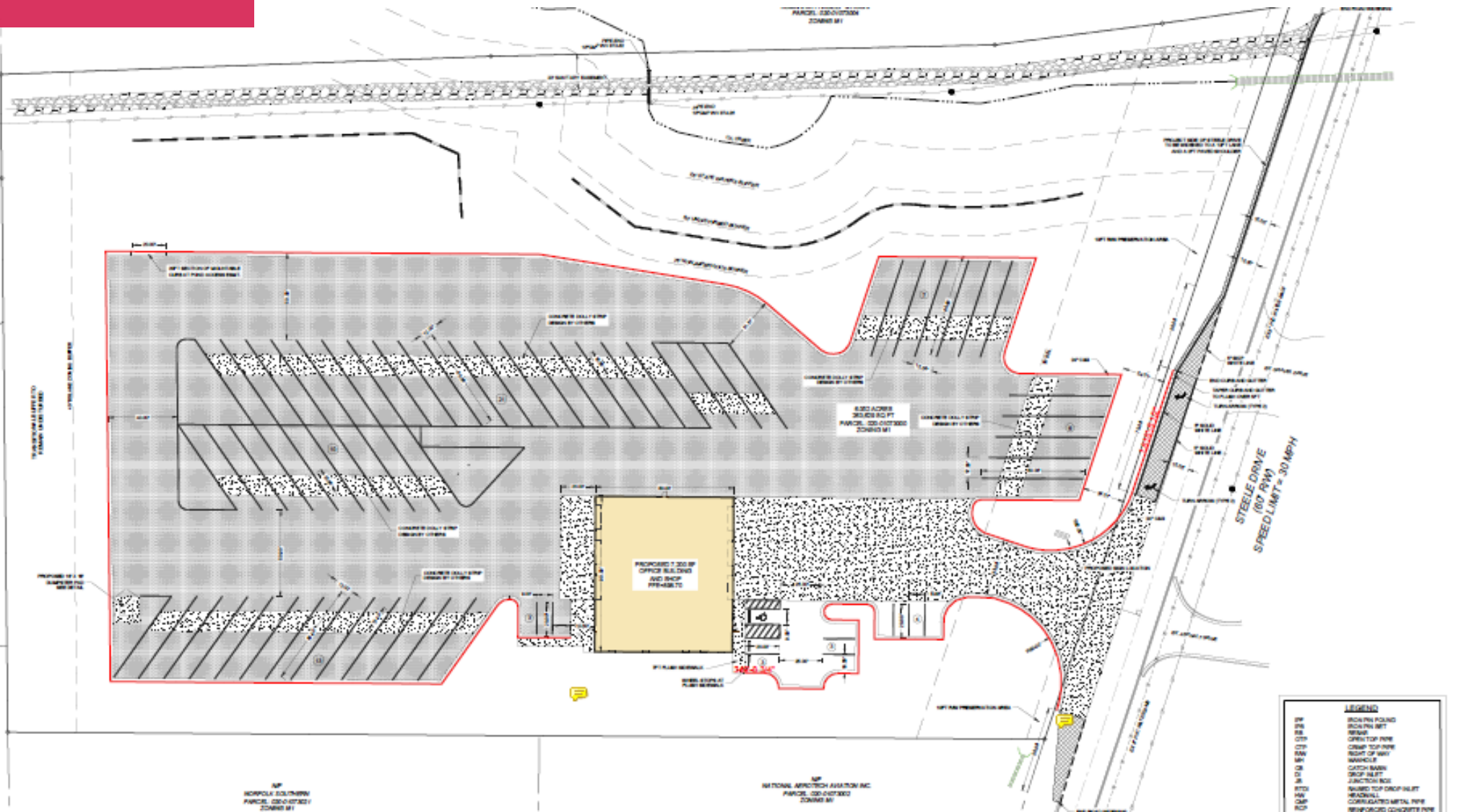
Every effort has been made to provide accurate information, but no liability is assumed for errors or omissions.

King Industrial
Realty, Inc.

CORFAC
INTERNATIONAL

Industrial • Commercial • Investment
404.942.2000 | kingindustrial.com

SITE PLAN



BRYAN MARSHBURN, SIOR, CCIM

Senior Vice President

404.942.2044

bmarshburn@kingindustrial.com

Every effort has been made to provide accurate information, but no liability is assumed for errors or omissions.

King Industrial Realty, Inc.

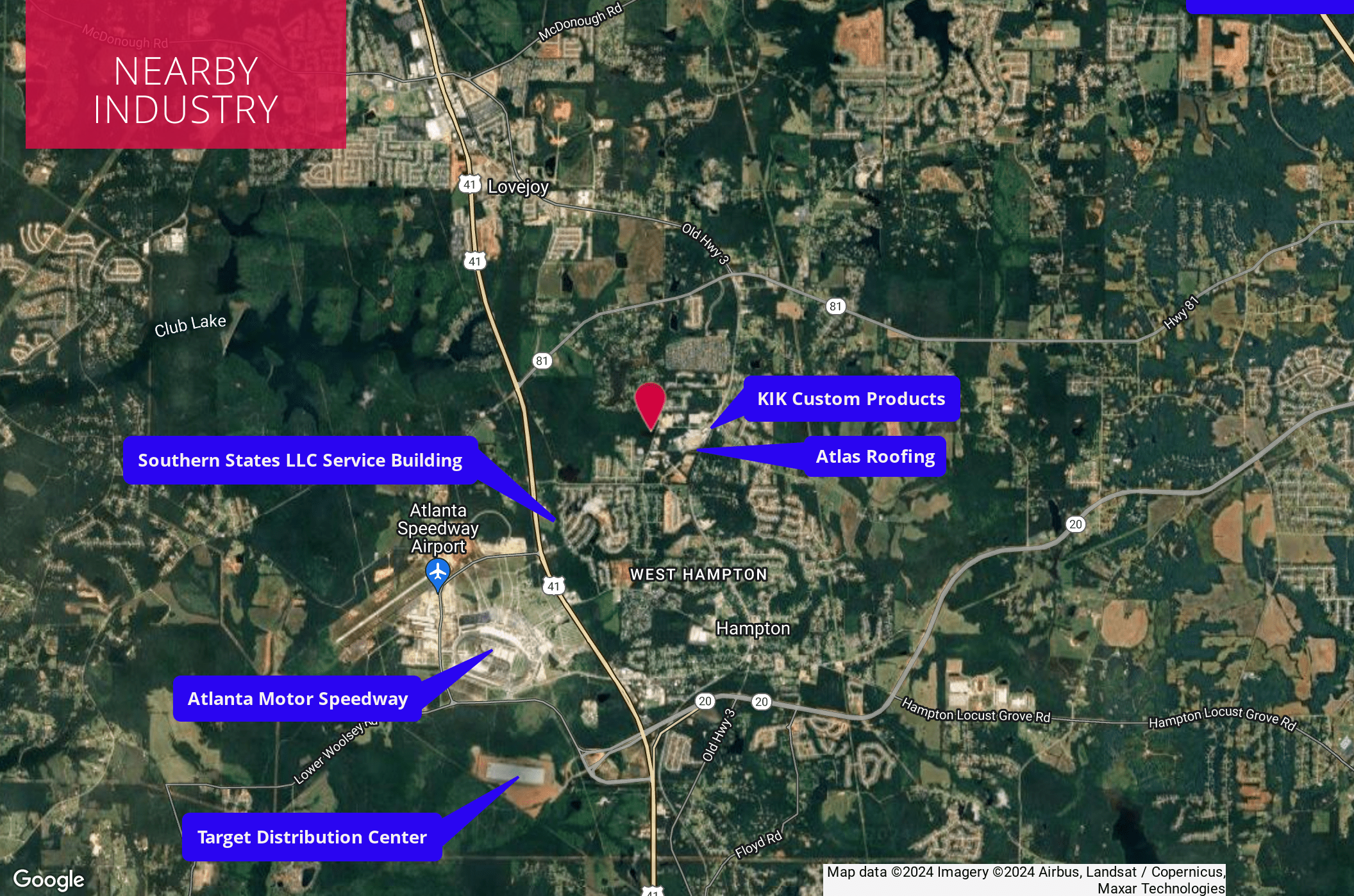
CORFAC INTERNATIONAL

Industrial • Commercial • Investment
404.942.2000 | kingindustrial.com

SITE LAYOUT PLAN

Date	10/2023
Revision	Number per modification
No.	
Plan	
Scale	
Drawn	
Checked	
Proj.	

NEARBY INDUSTRY



Map data ©2024 Imagery ©2024 Airbus, Landsat / Copernicus, Maxar Technologies

BRYAN MARSHBURN, SIOR, CCIM

Senior Vice President

404.942.2044

bmarshburn@kingindustrial.com

Every effort has been made to provide accurate information, but no liability is assumed for errors or omissions.



Industrial • Commercial • Investment
404.942.2000 | kingindustrial.com

EXCLUSIVELY LISTED BY:

BRYAN MARSHBURN, SIOR, CCIM

Senior Vice President

bmarshburn@kingindustrial.com

404.942.2044

King Industrial
Realty, Inc.

Industrial • Commercial • Investment
404.942.2000 | kingindustrial.com