



Exclusively Listed by:

Brian Brockman - In-State Broker
License #: BRK.2009000214
Bang Realty, Inc
bor@bangrealty.com
513-898-1551

Dental Investment Sale with National Tenant

1233 Haddonfield Berlin Rd, Ste 6, Voorhees, NJ 08043

BANG
REALTY

CONFIDENTIALITY & DISCLAIMER



All materials and information received or derived from Menlo Group Commercial Real Estate and Bang Realty, Inc, their directors, officers, agents, advisors, affiliates and/or any third party sources are provided without representation or warranty as to completeness, veracity, or accuracy, condition of the property, compliance or lack of compliance with applicable governmental requirements, developability or suitability, financial performance of the property, projected financial performance of the property for any party's intended use or any and all other matters.

Neither Menlo Group Commercial Real Estate or Bang Realty, Inc, their directors, officers, agents, advisors, or affiliates makes any representation or warranty, express or implied, as to accuracy or completeness of the any materials or information provided, derived, or received. Materials and information from any source, whether written or verbal, that may be furnished for review are not a substitute for a party's active conduct of its own due diligence to determine these and other matters of significance to such party. Menlo Group Commercial Real Estate and Bang Realty, Inc, will not investigate or verify any such matters or conduct due diligence for a party unless otherwise agreed in writing.

EACH PARTY SHALL CONDUCT ITS OWN INDEPENDENT INVESTIGATION AND DUE DILIGENCE.

Any party contemplating or under contract or in escrow for a transaction is urged to verify all information and to conduct their own inspections and investigations including through appropriate third party independent professionals selected by such party. All financial data should be verified by the party including by obtaining and reading applicable documents and reports and consulting appropriate independent professionals. Menlo Group Commercial Real Estate and Bang Realty, Inc, make no warranties and/or representations regarding the veracity, completeness, or relevance of any financial data or assumptions. Menlo Group Commercial Real Estate and Bang Realty, Inc, do not serve as a financial advisor to any party regarding any proposed transaction. All data and assumptions regarding financial performance, including that used for financial modeling purposes, may differ from actual data or performance. Any estimates of market rents and/or projected rents that may be provided to a party do not necessarily mean that rents can be established at or increased to that level. Parties must evaluate any applicable contractual and governmental limitations as well as market conditions, vacancy factors and other issues in order to determine rents from or for the property.

Legal questions should be discussed by the party with an attorney. Tax questions should be discussed by the party with a certified public accountant or tax attorney. Title questions should be discussed by the party with a title officer or attorney. Questions regarding the condition of the property and whether the property complies with applicable governmental requirements should be discussed by the party with appropriate engineers, architects, contractors, other consultants and governmental agencies. All properties and services are marketed by Menlo Group Commercial Real Estate and Bang Realty, Inc, in compliance with all applicable fair housing and equal opportunity laws.

PROPERTY OVERVIEW

Bang Realty, Inc, are pleased to present this dental investment opportunity. The +/- 2,200 sq. ft. property is fully leased by a national tenant with 10 years of lease term remaining.

SALE PRICE	\$785,000
CAP RATE	7.8%
NOI	\$61,599.96
ORIGINAL LEASE TERM	10 years
LEASE RATE	\$28.00 PSF NNN
SUITE SIZE	+/- 2,200 SF
OCCUPANCY	100%

LEASE SUMMARY

TENANT	Shared Practices
PREMISES	+/- 2,200 SF
BASE RENT	\$5,133.33
RENT PER SF	\$28.00
LEASE COMMENCEMENT	November 1, 2025
LEASE EXPIRATION	October 31, 2035
ORIGINAL LEASE TERM	10 years
RENT INCREASES	3% annually
LEASE TYPE	NNN
USE	Dental
GUARANTOR	Corporate guarantee
RENEWAL OPTIONS	2, 10-year options at 3% increases

DO NOT DISTURB TENANT

TENANT PROFILE

Shared Practices is a national dental partnership organization. The group is quickly expanding and currently has 38+ practices nationwide.

[Tenant financials may be reviewed upon execution of a confidentiality agreement.](#)

Learn more about Shared Practices at www.sharedpracticesgroup.com.



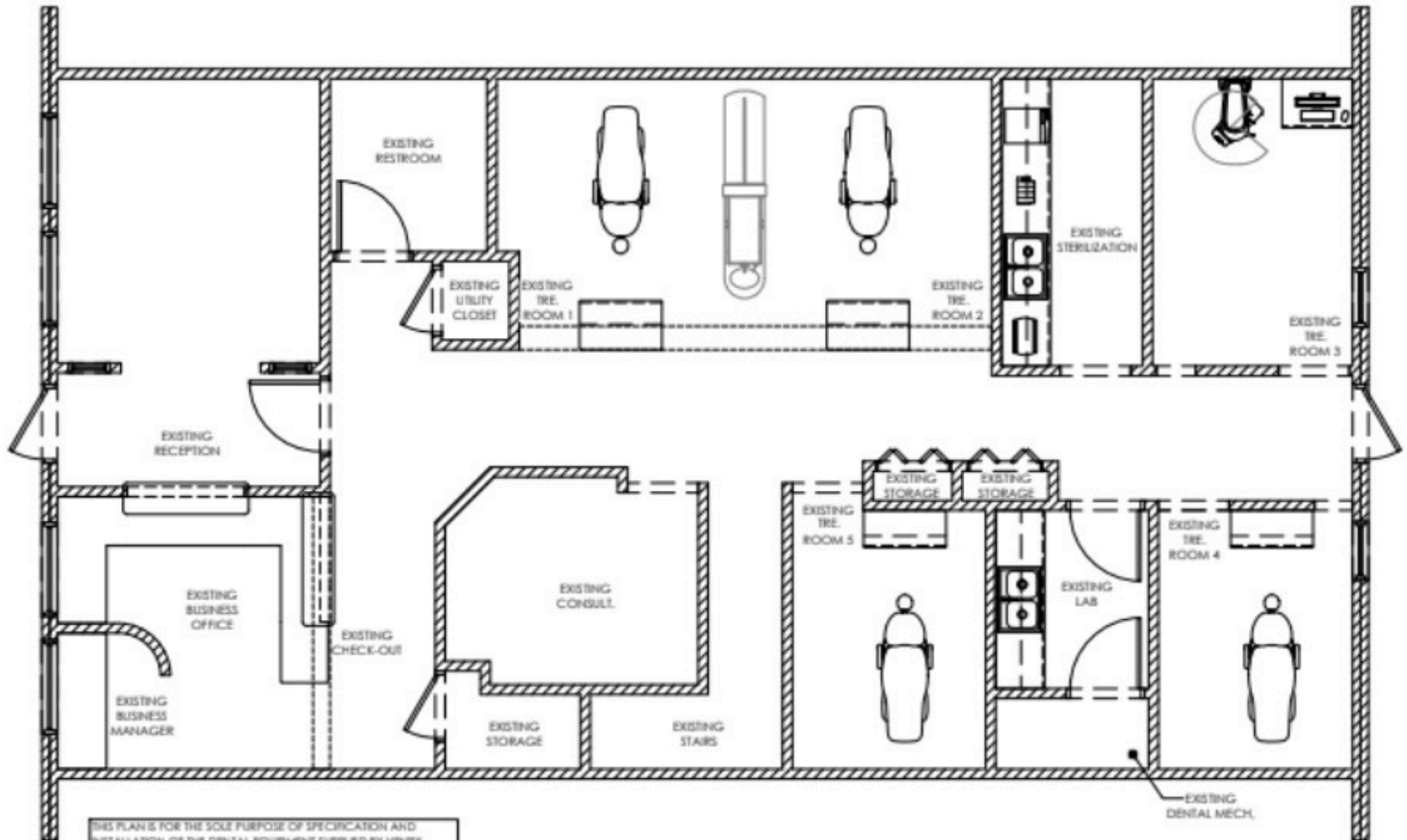
PROPERTY HIGHLIGHTS

- Built-out dental office
- Part of multi-tenant professional center
- 10-year NNN lease
- Lease rate of \$28.00 PSF NNN
- 3% annual escalations
- National dental tenant with 38+ locations
- Built in 2006
- Located near all the major highways



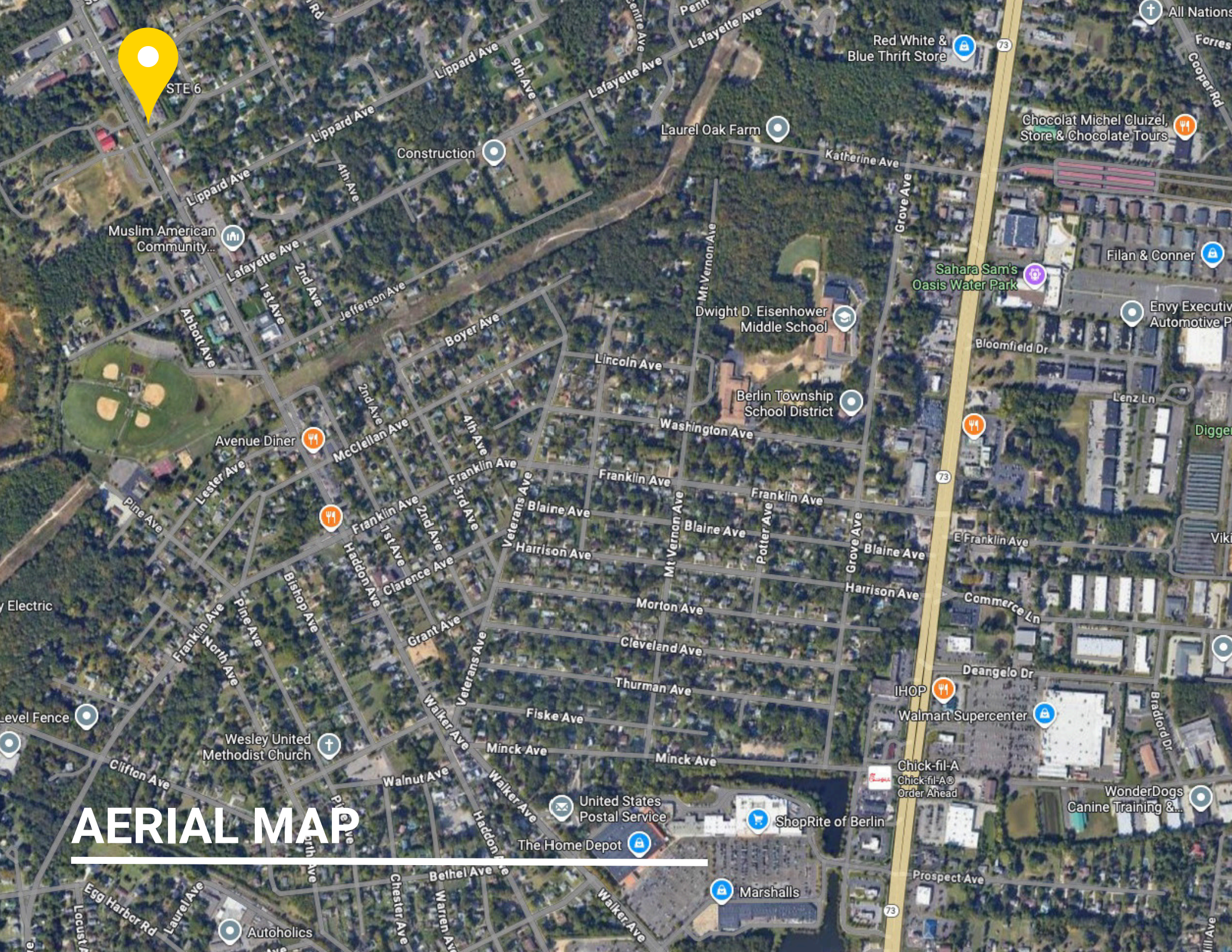


FLOOR PLAN



THIS PLAN IS FOR THE SOLE PURPOSE OF SPECIFICATION AND INSTALLATION OF THE DENTAL EQUIPMENT SUPPLIED BY HENRY SCHEIN DENTAL. EXISTING CONDITIONS MAY NOT MEET LOCAL BUILDING AND ACCESSIBILITY CODES. IT IS THE ARCHITECT/ CONTRACTOR'S RESPONSIBILITY TO VERIFY THAT ALL CODE RESTRICTIONS AND CLEARANCES ARE MET.

DENTAL CHAIR AND CABINET UTILITIES TO BE LOCATED ON JOB-SITE PER MANUFACTURER'S TEMPLATES. LOCATIONS TO BE APPROVED BY DOCTOR AND HENRY SCHEIN EQUIPMENT SPECIALIST PRIOR TO ROUGH-IN.



AERIAL MAP

AERIAL MAP



Durand, Inc.
ATS Voorhees



Garden State
Sports Center
Gun shop



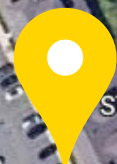
Behnke Landscaping



Nagguri Saoji
Temporarily closed



Allin2gether



STE 6



Preah Buddha Rangsey
Temple (Khmer Temple)



Nostra Pizza &
Italian Eatery
Pizza

Haddonfield-Berlin Rd

Devonshire Dr

Cambridge Way

Cambridge Way

St Albans Pl

Haddonfield-Berlin Rd

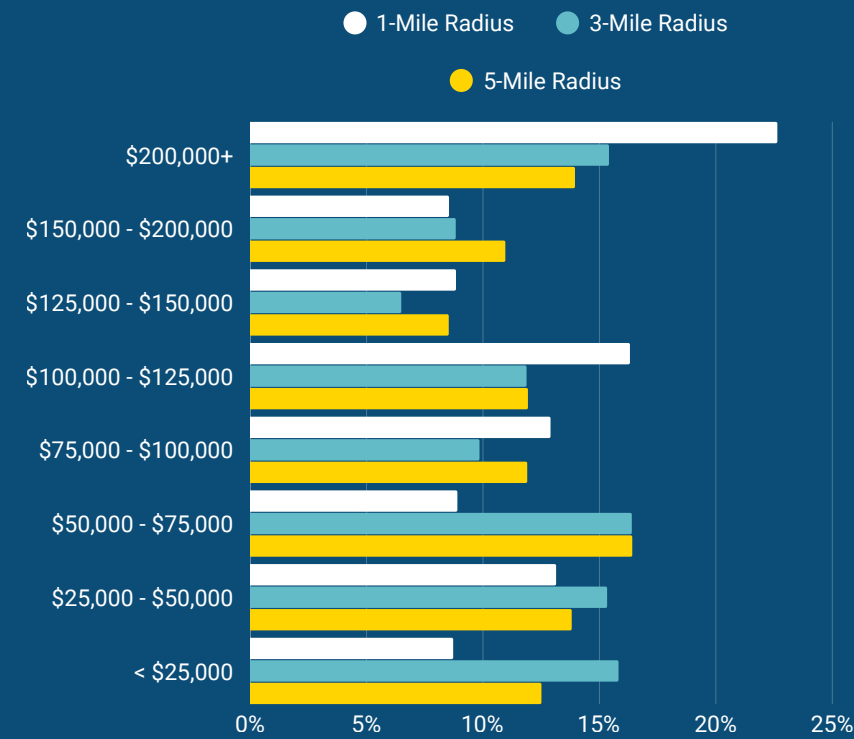
Lippard Ave

Catania Ct

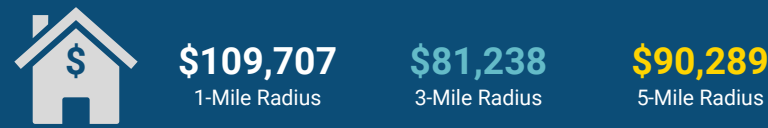
Catania Ct

DEMOGRAPHICS

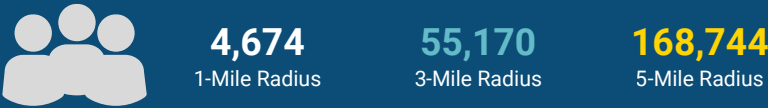
2024 HOUSEHOLD INCOME



2024 MEDIAN HOUSEHOLD INCOME



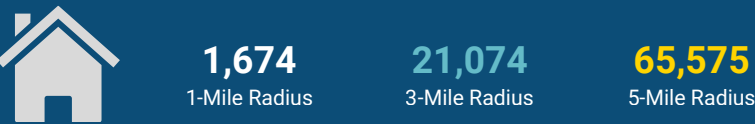
2024 POPULATION



2024 MEDIAN AGE



2024 HOUSEHOLDS



ANTICIPATED GROWTH 2024-2029

