

# 20505 Sibley Road

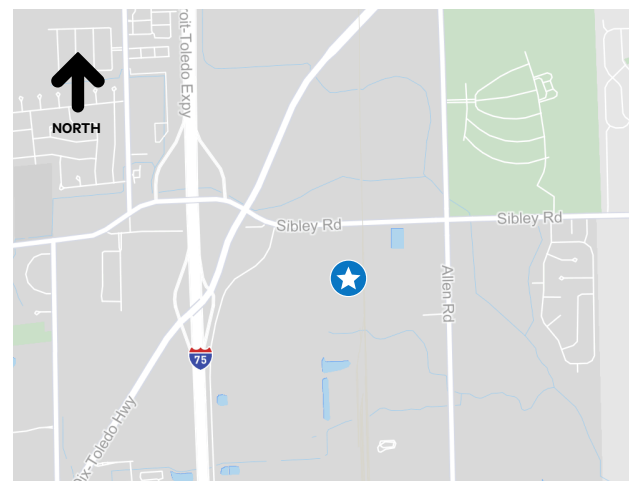
Brownstown Twp, MI

98,976 Sq Ft Available | Excellent Warehouse/Distribution Facility with ample parking

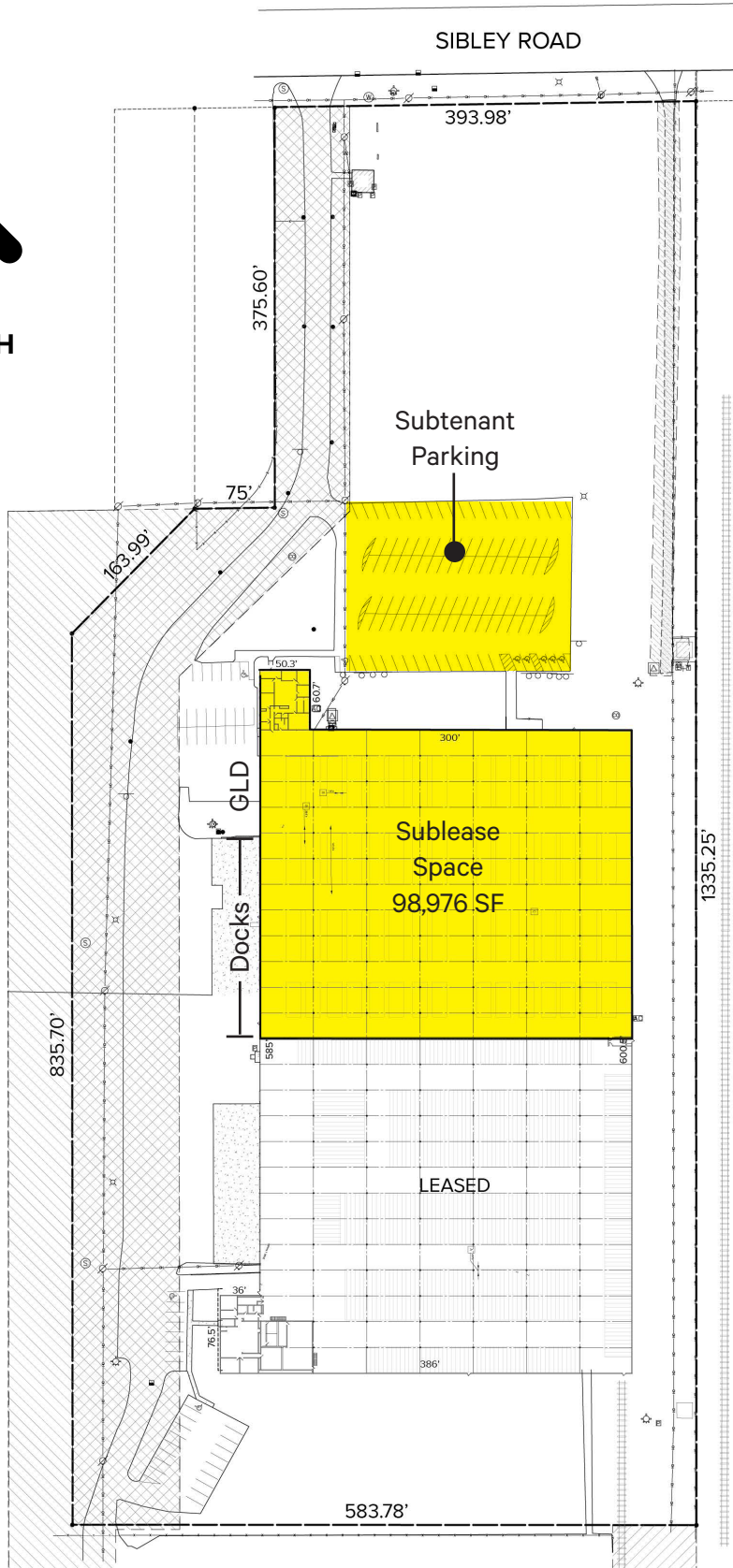
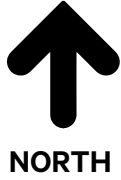


## Property Features

- + 98,976 square feet available
- + 3,000 square feet of office
- + Up to 29' clear height at center
- + (1) 12x14 grade level door, (10) dock doors
- + 50 parking spaces or room to stage trailers
- + 1000 amps, 480 volts, 3-Phase power
- + Improvements made in 2019 include LED lighting, new roof, new paved parking lot, new insulation panels, new Cambridge heating units for warehouse and new ESFR fire suppression system
- + Lease Rate: \$6.75/sq. ft. NNN
- + Separately metered for electric & gas
- + Available September 1, 2024



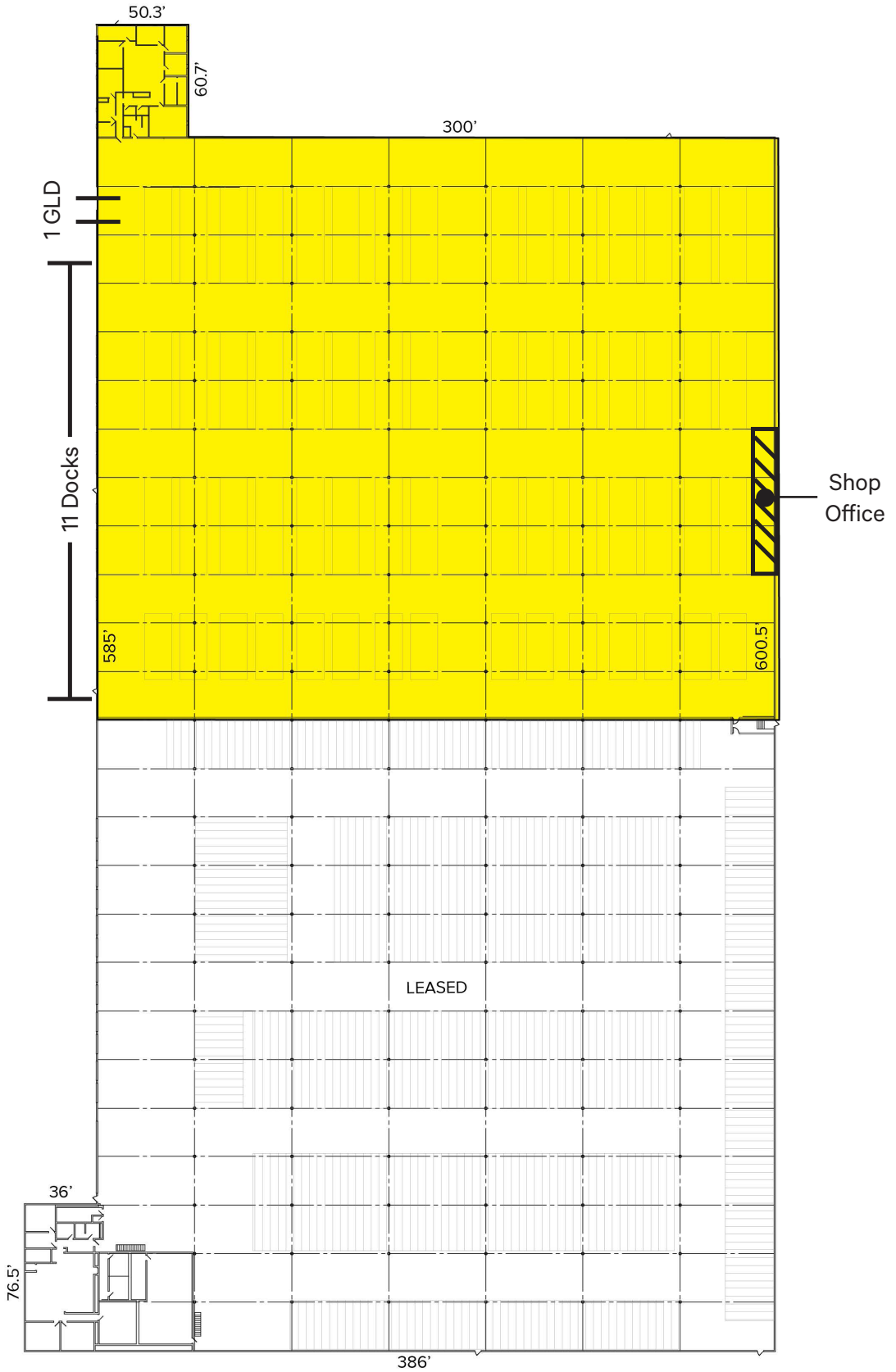
# Site Plan



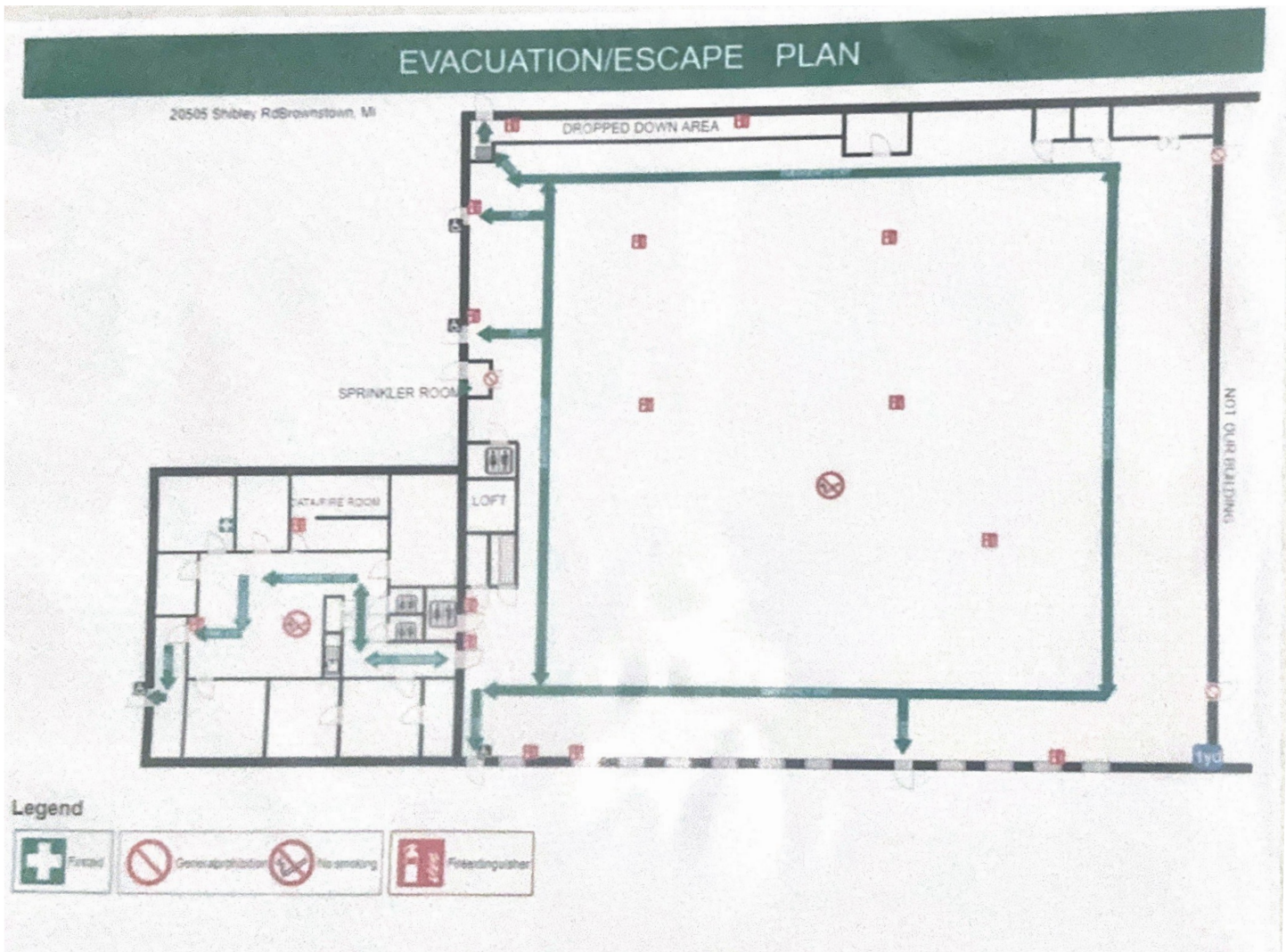
# Floor Plan



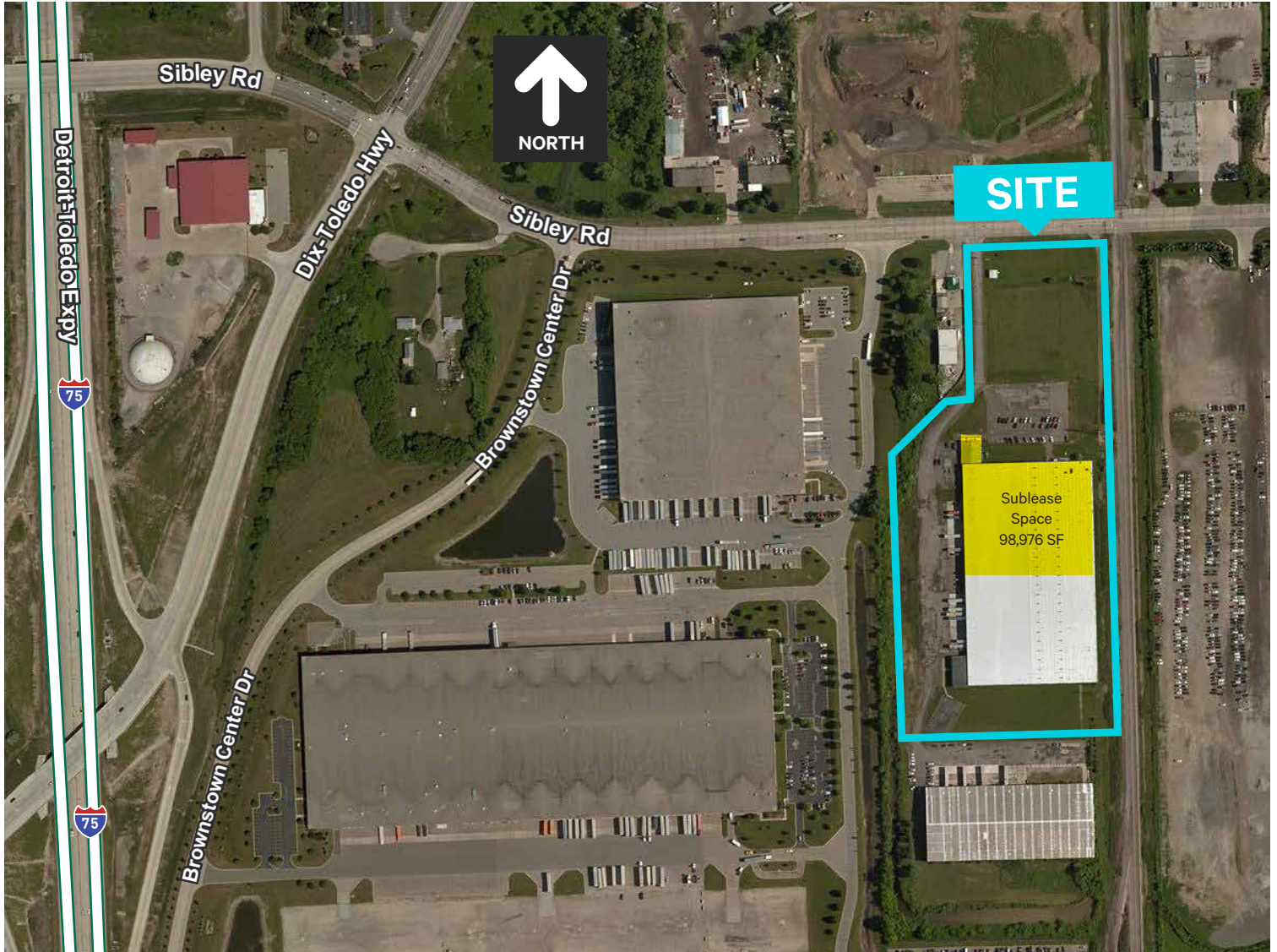
NORTH



# Evacuation Plan



# Aerial



## Contact Us

**Peter Rogers**

First Vice President  
+1 248 351 2064  
peter.rogers@cbre.com

**Wyen Koan, CCIM**

Senior Associate  
C: +1 567 420 9990  
T: +1 248 936 6847  
wyen.koan@cbre.com

© 2022 CBRE, Inc. All rights reserved. This information has been obtained from sources believed reliable but has not been verified for accuracy or completeness. CBRE, Inc. makes no guarantee, representation or warranty and accepts no responsibility or liability as to the accuracy, completeness, or reliability of the information contained herein. You should conduct a careful, independent investigation of the property and verify all information. Any reliance on this information is solely at your own risk.