

# CHURCHILL TOWER

12400 COIT ROAD | DALLAS, TEXAS 75251



INCREDIBLE LOCATION | FIRST IN CLASS AMENITIES



## CONTACT

Kolby Dickerson  
214-534-1599  
[kdickerson@txreproperties.com](mailto:kdickerson@txreproperties.com)

Sam Davis  
214-684-7197  
[sdavis@txreproperties.com](mailto:sdavis@txreproperties.com)

Grant Gomez  
214-734-4725  
[grant@txreproperties.com](mailto:grant@txreproperties.com)

## PROPERTY HIGHLIGHTS

- Fully Staffed Building with Onsite Property Management, Engineering, Security, and Janitorial
- Newly Renovated
  - State of the Art Conference Facility (60 Seats)
  - Fitness Center with Men's & Women's Full Service Locker Rooms
- On-Site Cafe & Sundry Shop
- On-Site Car Detail Center
- 5 Story Parking Garage with 4:1,000 Parking Ratio
- 2-Level Underground Secured Executive Garage

[WWW.12400COIT.COM](http://WWW.12400COIT.COM)





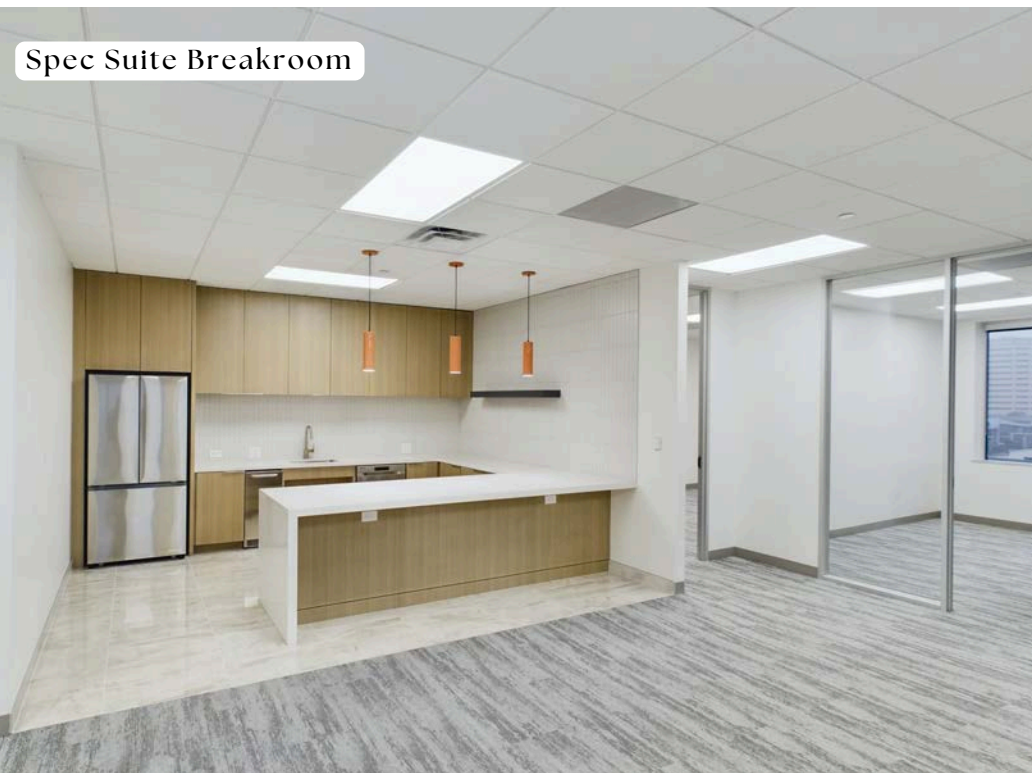
# PROPERTY LOCATION

- Exceptional Ingress & Egress
  - Direct Exit from 75 at Churchill & Coit
  - Direct Exit from 635 at Coit
- 18 Minutes to DFW International Airport
- 14 Minute to Dallas Love Field Airport
- 12 Minutes to Dallas Central Business District
- 1 Mile to Medical City Dallas
- 2.3 Miles to NorthPark Center
- 2 Miles to Galleria Center
- DART Bus Service with Connects to Forest Lane Light Rail Station

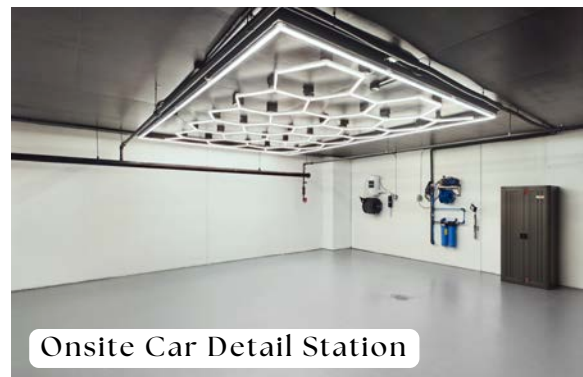
Renovated Fitness Center



Spec Suite Breakroom



Onsite Car Detail Station



New Lobby Renovations



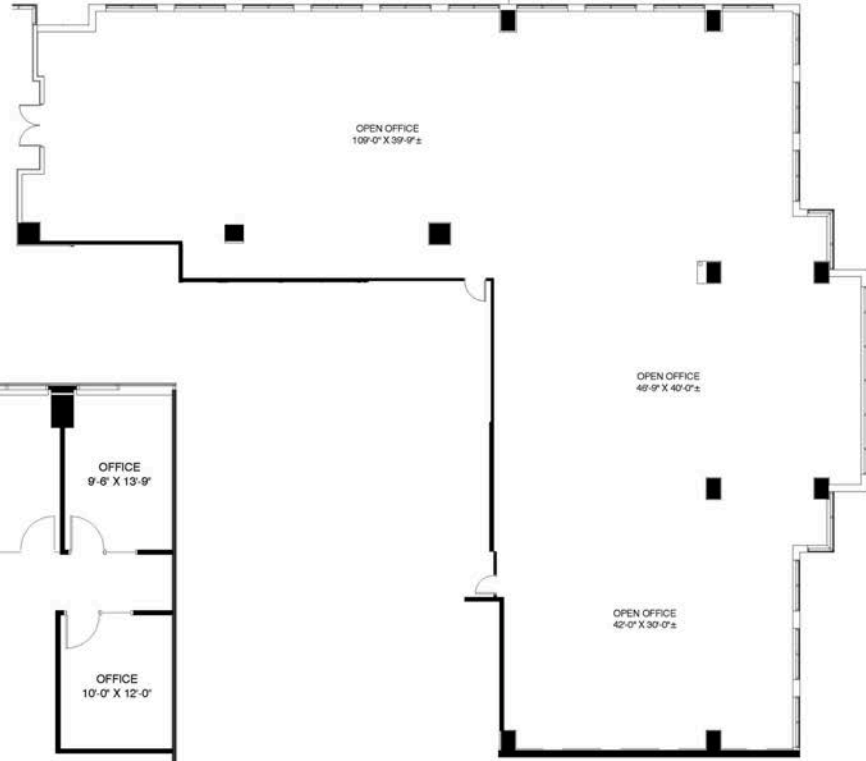
New Conference Center



# AVAILABLE SUITES



**SUITE 450 - 3,871 RSF**



**SUITE 150 -  
8,692 RSF**



**SUITE 1150 - 2,485 RSF**





# CHURCHILL TOWER

12400 COIT ROAD | DALLAS, TEXAS 75251

## CONTACT

Kolby Dickerson  
214-534-1599  
[kdickerson@txreproperties.com](mailto:kdickerson@txreproperties.com)

Sam Davis  
214-684-7197  
[sdavis@txreproperties.com](mailto:sdavis@txreproperties.com)

Grant Gomez  
214-734-4725  
[grant@txreproperties.com](mailto:grant@txreproperties.com)

