



1717 POWELL



BOUTIQUE OFFICE BUILDING ON WASHINGTON SQUARE PARK

FOR LEASE

Jake Levinson

415.786.4303

jake@groundmatrix.com

CalDRE #02021931

Alex Fee

209.981.7753

alex@groundmatrix.com

CalDRE #02018515



OFFICE | INDUSTRIAL | RETAIL
TEAM

1717

1717 POWELL
POWELL
San Francisco, CA 94133



GROUND MATRIX

FOR LEASE | OFFICE BUILDING

Property Summary

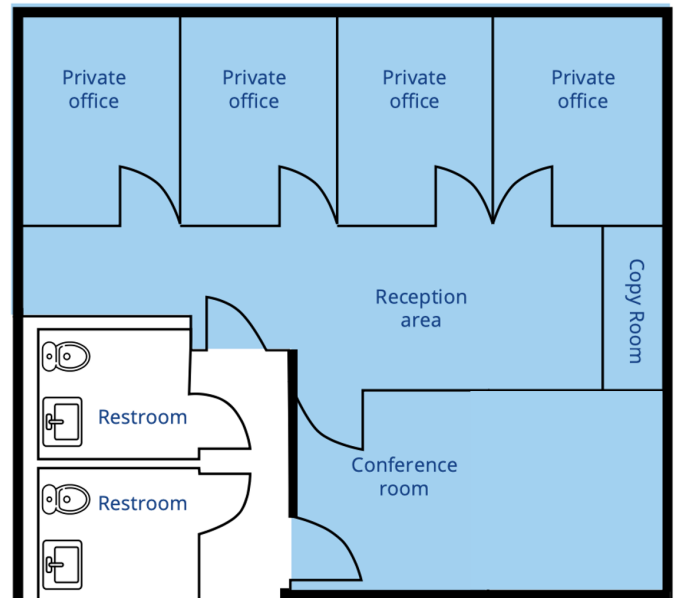


PROPERTY HIGHLIGHTS

- Directly across from Washington Square Park
- Four private offices
- Large conference room
- High ceilings
- Copy area
- Closet storage
- Newly upgraded lobby
- Direct bathroom access

OFFERING SUMMARY

Lease Rate:	\$4,500.00 per month (Gross)
Available SF:	1,000 SF
Building Size:	9,150 SF



Jake Levinson

415.786.4303
jake@groundmatrix.com
CalDRE #02021931

Alex Fee

209.981.7753
alex@groundmatrix.com
CalDRE #02018515

1717

1717 POWELL
POWELL
San Francisco, CA 94133



GROUND MATRIX

FOR LEASE | OFFICE BUILDING

Additional Photos



Jake Levinson

415.786.4303
jake@groundmatrix.com
CalDRE #02021931

Alex Fee

209.981.7753
alex@groundmatrix.com
CalDRE #02018515

1717

1717 POWELL
POWELL
San Francisco, CA 94133



GROUND MATRIX

FOR LEASE | OFFICE BUILDING

Retailer Map



Jake Levinson
415.786.4303
jake@groundmatrix.com
CalDRE #02021931

Alex Fee
209.981.7753
alex@groundmatrix.com
CalDRE #02018515