



**3300 Corporate Avenue
Weston, FL 33331**

Meridian Business Campus of Weston



Located within Meridian Business Campus, 3300 Corporate Avenue offers image conscious businesses an attractive and flexible multi-use facility. The single story building provides a creative alternative to companies needing both office and distribution space. In keeping with the high standards of Meridian Business Campus, impressive landscaping enhances the convenient, lakefront property.

Flex Space Available For Lease

For Further Information, Contact:

Timothy Talbot | Andrew Ackerman
(954) 385-0000

Property Features Include

- Suite 116 - 6,562 SF Office/Warehouse
- Class A Office/Flex Building
- One Drive-In & One Dock Level Loading
- 18' Clear Ceiling Height
- Individually Metered & Controlled Air Conditioning in Office Areas
- Conveniently Located off of I-75, South of I-595, & the Sawgrass Expressway
- Close Proximity to Restaurants, Banking & Retail Establishments

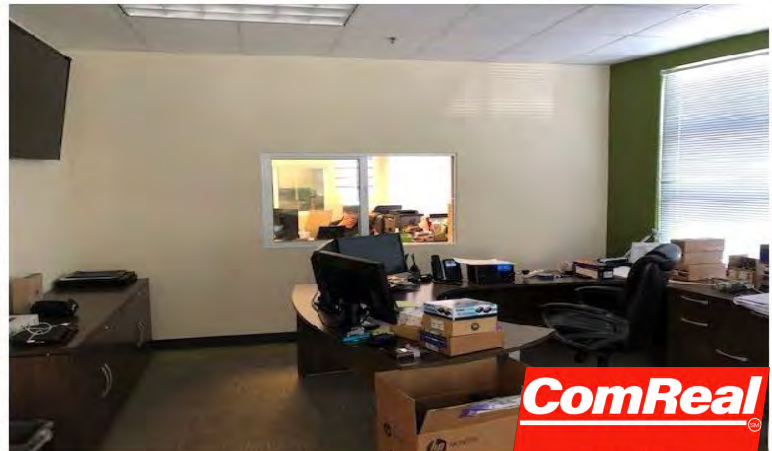
ComReal

FT. LAUDERDALE

www.comrealfortlauderdale.com

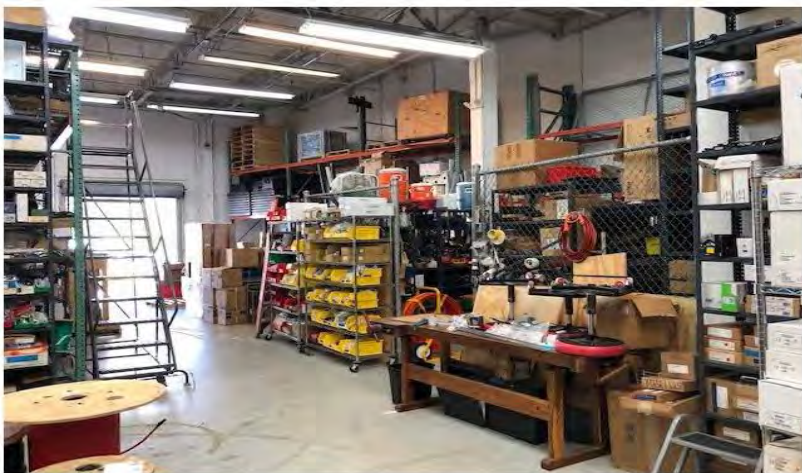


Suite 116 - 6,562 Square Feet



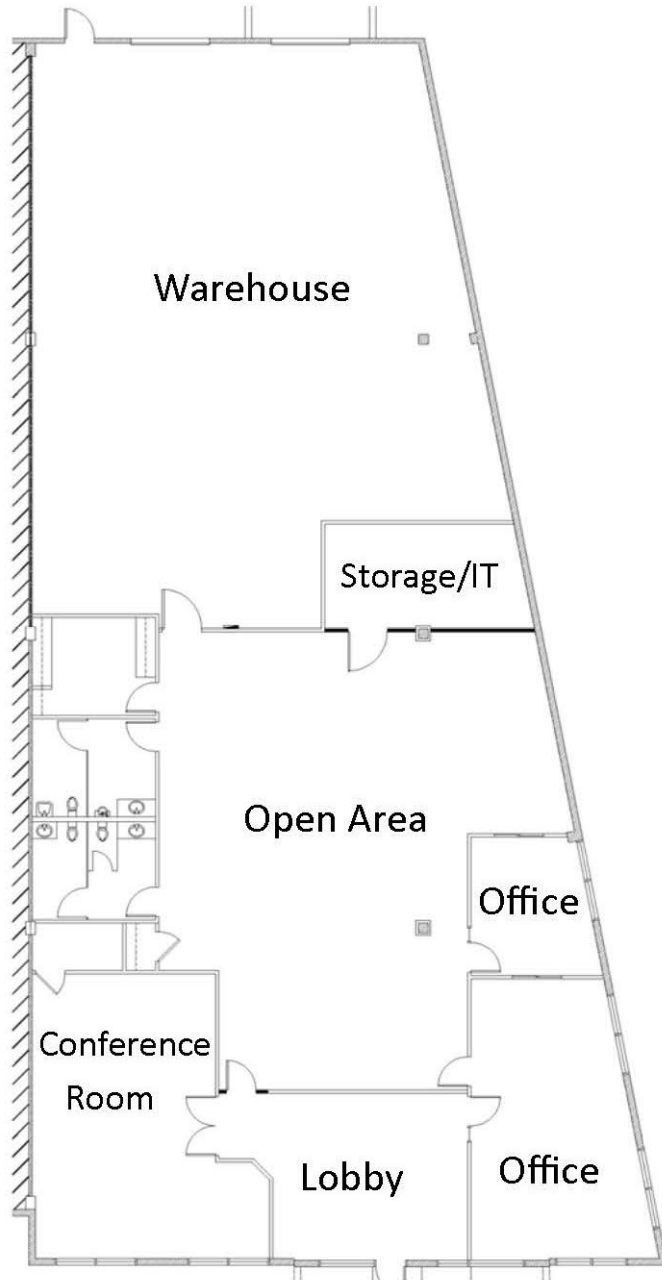


Suite 116 - 6,562 Square Feet



Meridian Business Campus

3300 Corporate Avenue, Weston, FL 33331



Suite 116 - 6,562 SF

FOR LEASING INFORMATION:

Timothy J. Talbot | ttalbot@comreal.com

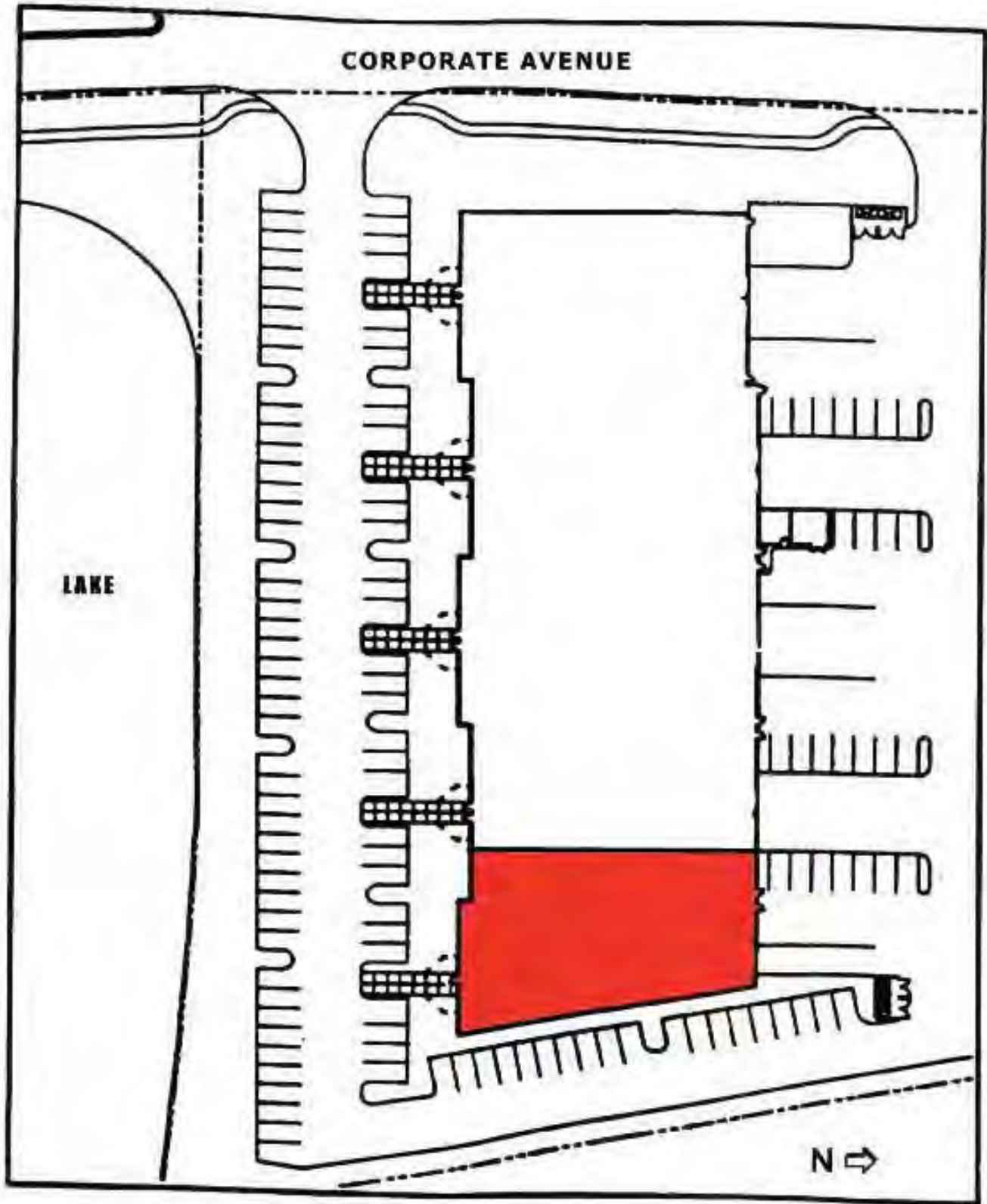
Andrew Ackerman | aackerman@comreal.com

954.385.0000



Site Plan

3300 Corporate Avenue



For Further Information, Contact:

www.comrealfortlauderdale.com

Timothy Talbot | Andrew Ackerman

(954) 385-0000