

# Commercial Tract(s) For Sale

## Hwy 72, Rogersville, AL

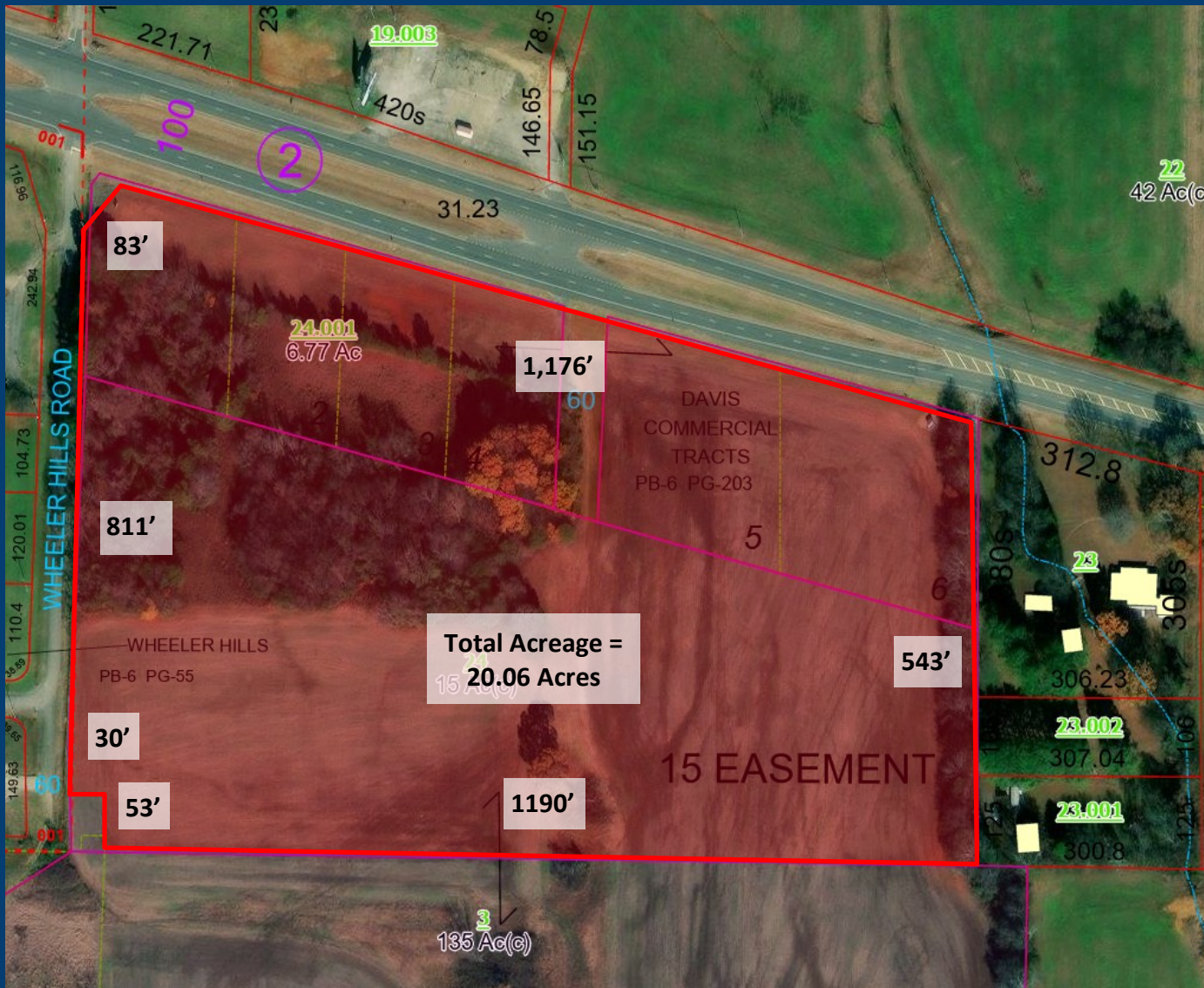
### Up to 20.06 Acres Available



## FOR SALE

### Property Details

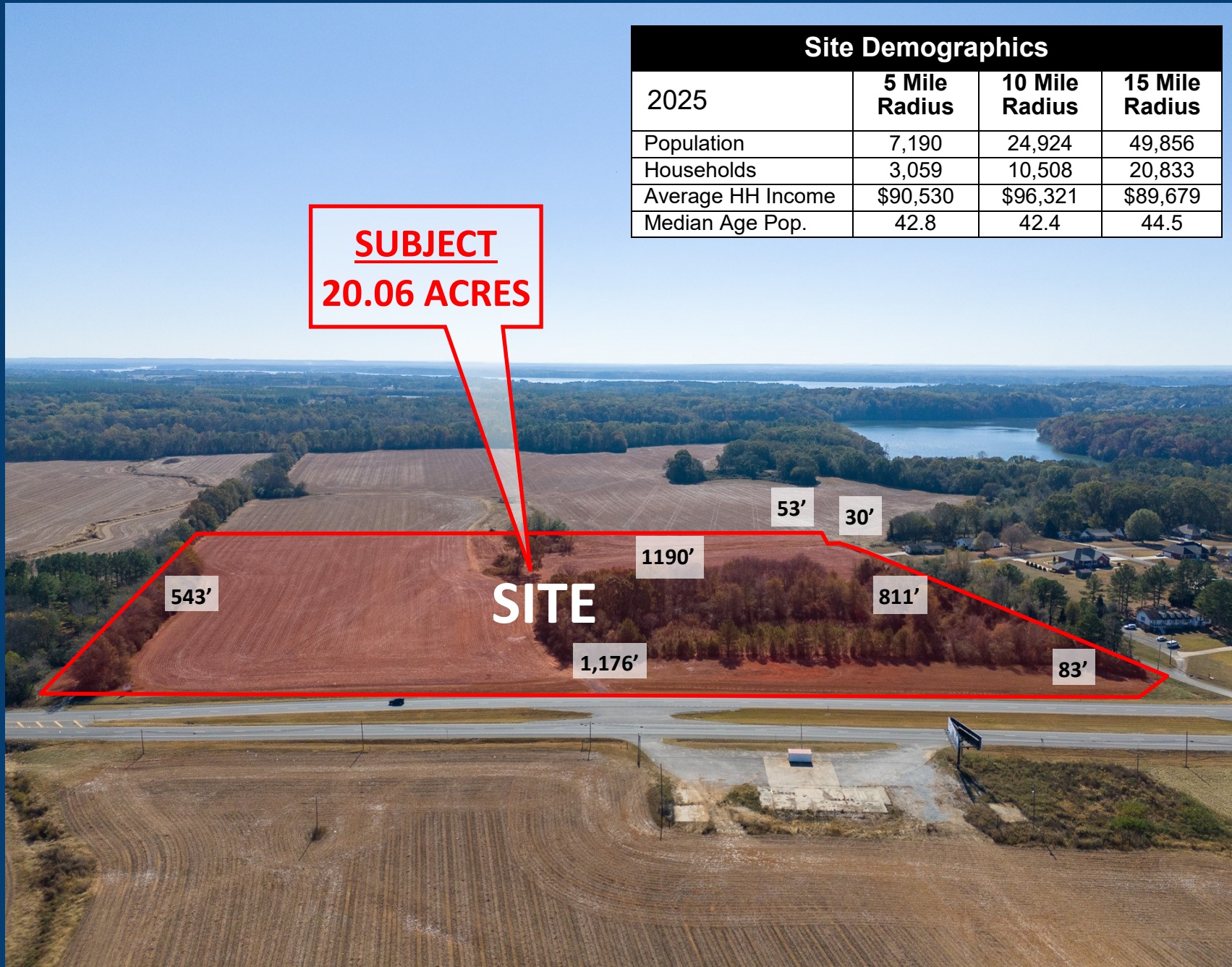
- ◇ Up to 20.06 Acres Available, Can Subdivide into Smaller Tracts
- ◇ All Utilities Available, including Sewer
- ◇ Located 3 Miles East of Beautiful Elk River, Home to Hundreds of Residents Who Own Permanent River Residences & Vacation Homes
- ◇ 5 Miles North of Joe Wheeler State Park
- ◇ Centrally Located 17 Miles East of Athens, AL & 20 Miles West of Florence, AL



For more information, please contact:  
**MING CRE GROUP**  
Phone: 256-232-3001  
Email: [william@mingcregroup.com](mailto:william@mingcregroup.com);  
[elizabeth@mingcregroup.com](mailto:elizabeth@mingcregroup.com)



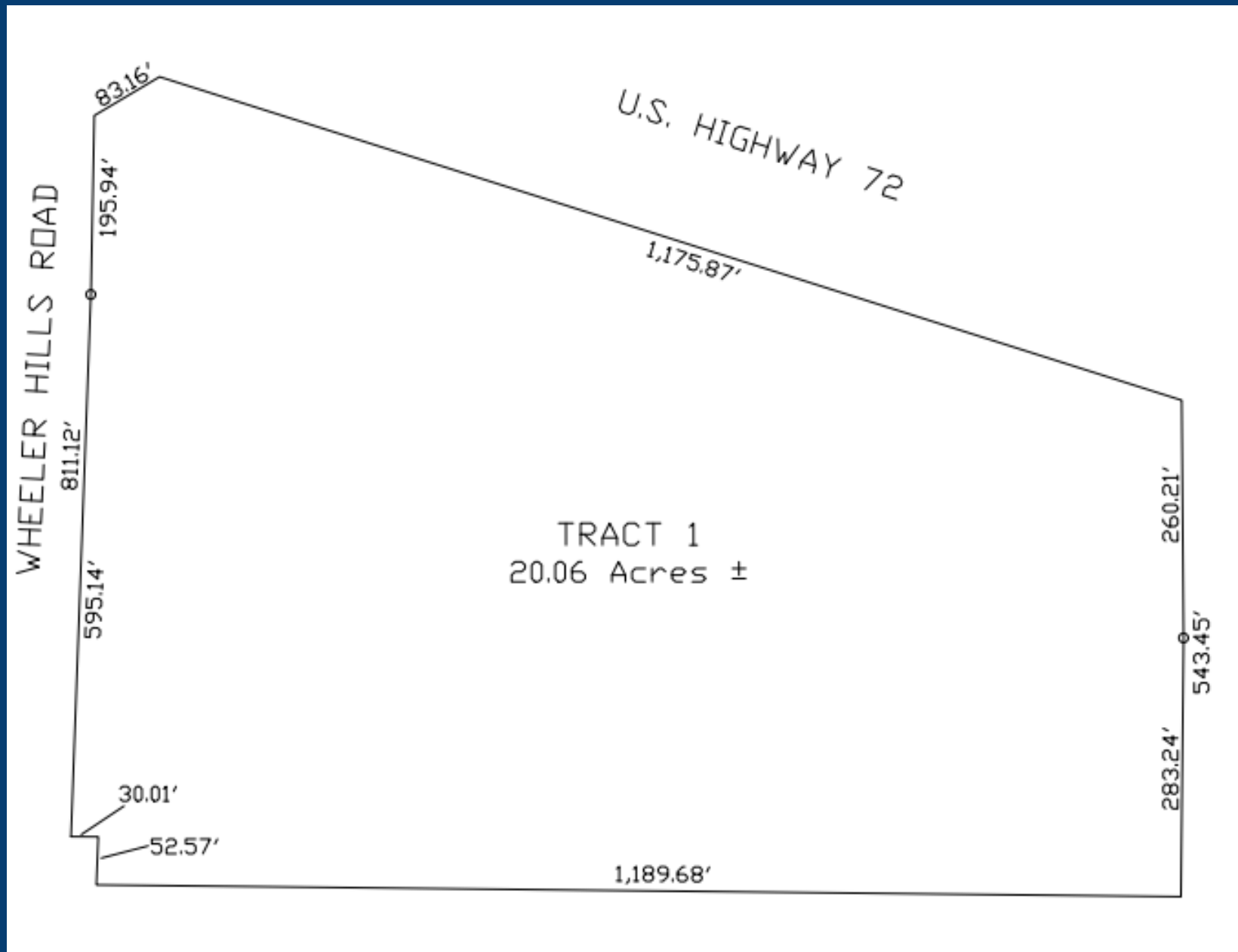
# Hwy 72, Rogersville, AL - Site Aerial



## Site Demographics

2025	5 Mile Radius	10 Mile Radius	15 Mile Radius
Population	7,190	24,924	49,856
Households	3,059	10,508	20,833
Average HH Income	\$90,530	\$96,321	\$89,679
Median Age Pop.	42.8	42.4	44.5

# Hwy 72, Rogersville, AL - Plat





# Hwy 72 Rogersville Commercial Tracts - Market Aerial

