

FOR SUBLEASE

7461 BEVERLY BLVD.

LOS ANGELES, CA 90036

**MANE AJARYAN**

Tel - 818-523-4997 | [mane@southparkgroup.com](mailto:mane@southparkgroup.com)

DRE LICENSE #02099173

# Property Overview



**FOR SUBLEASE**

7461 BEVERLY BLVD.  
LOS ANGELES, CA 90036

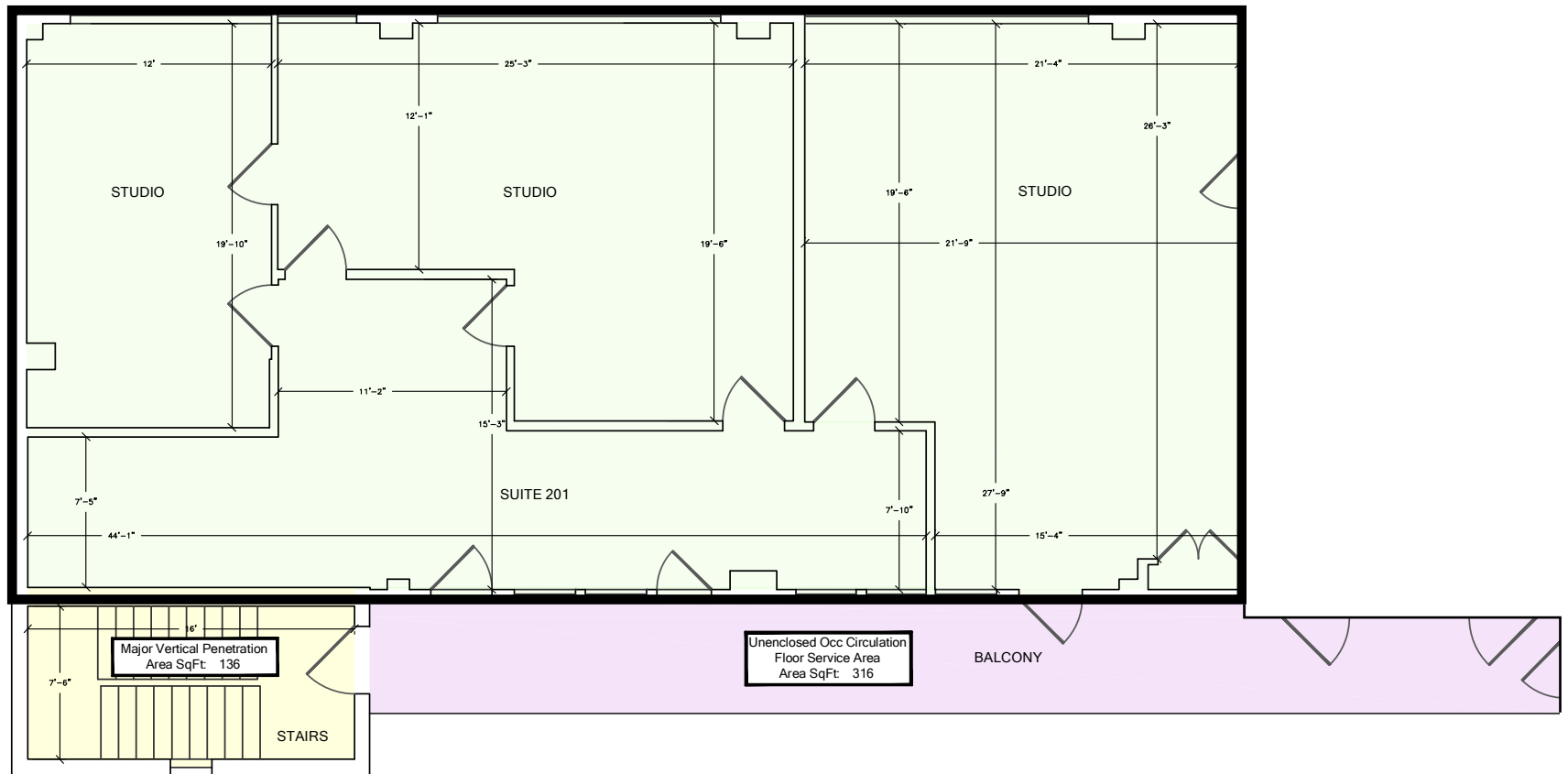
**USE**  
OFFICE

**SIZE**  
± 2,427 SF

**RATE**  
\$5,672 / MONTH,  
FULL SERVICE GROSS

**PARKING**  
3 SPACES ON SITE  
(\$125 PER SPACE / MONTH)

# Floor Plan



**7461**  
*Beverly*  
*Blvd.*

BEVERLY BLVD.

7461

HYUNDAI'S  
NORA FROM QUEENS

Dr. Sandwich  
MULTI-CHEESE SANDWICH

stereo



facile

the SKIN



facile

facile

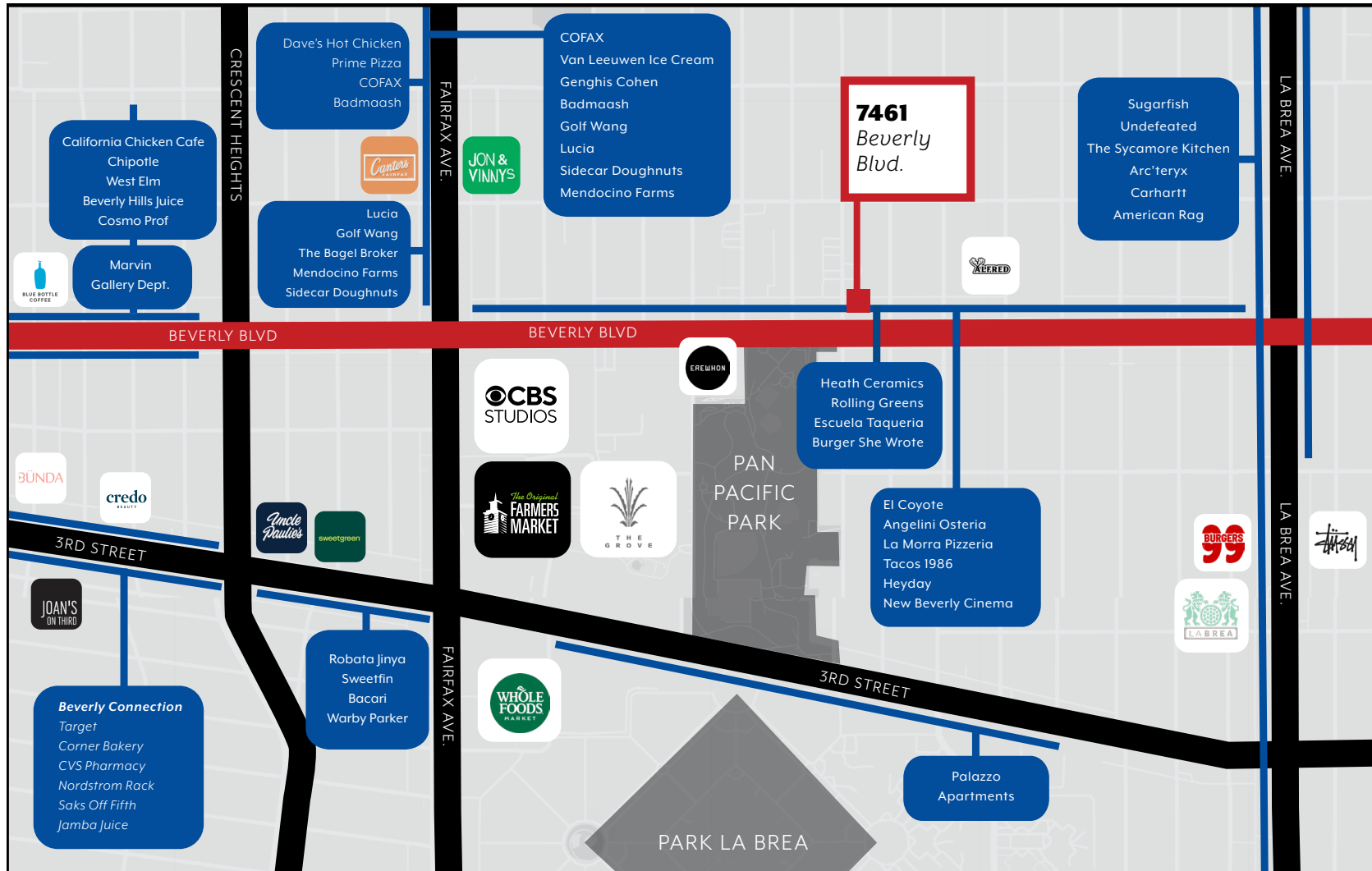


facile

facile



# Map Overview



# Contact Us

**MANE AJARYAN** Tel - 818-523-4997 | [mane@southparkgroup.com](mailto:mane@southparkgroup.com) | DRE LICENSE #02099173

