

FOR LEASE



**MOUNTAIN WEST**  
COMMERCIAL REAL ESTATE

**NIC WOODS**

nwoods@mwcre.com

direct 801.719.4309

[View Profile](#)

TURN KEY WALK UP / DRIVE UP RESTAURANT

## PROPERTY DETAILS

3645 NORTH CANYON ROAD PROVO, UT 84604

- 801 SF
- Commercial Grade Kitchen Equipment Included
- Close to BYU and Timpview High School
- Corner on Canyon Road
- Hood and Grease Trap Installed
- Private Restroom
- \$4,000 per Month Full Service

**FULL SERVICE  
COMMERCIAL REAL ESTATE**

2015 W. Grove Parkway, Suite J

Pleasant Grove, UT 84062

Office 385.233.9140

[www.mwcre.com](http://www.mwcre.com)



**MOUNTAIN WEST**  
COMMERCIAL REAL ESTATE

**NIC WOODS**

nwoods@mwcre.com

direct 801.719.4309

[View Profile](#)



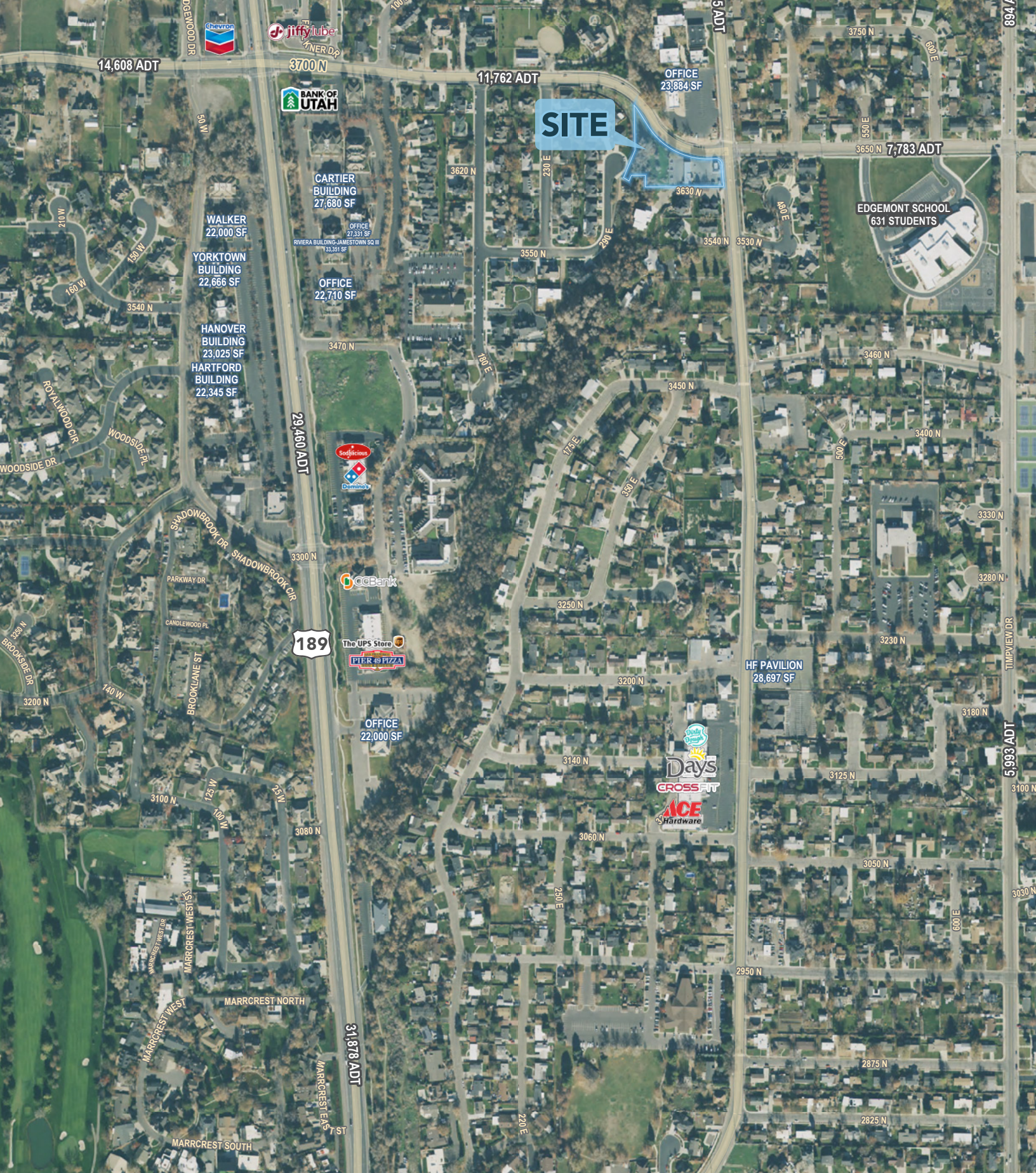
**FULL SERVICE  
COMMERCIAL REAL ESTATE**

2015 W. Grove Parkway, Suite J

Pleasant Grove, UT 84062

Office 385.233.9140

[www.mwcre.com](http://www.mwcre.com)



**SITE**



**MOUNTAIN WEST**  
COMMERCIAL REAL ESTATE

**NIC WOODS**

nwoods@mwcre.com  
direct 801.719.4309

[View Profile](#)

**FULL SERVICE  
COMMERCIAL REAL ESTATE**

2015 W. Grove Parkway, Suite J  
Pleasant Grove, UT 84062  
Office 385.233.9140  
[www.mwcre.com](http://www.mwcre.com)

This statement with the information it contains is given with the understanding that all negotiations relating to the purchase, renting or leasing of the property described above shall be conducted through this office. The above information while not guaranteed has been secured from sources we believe to be reliable.