

1 RETAIL FLOOR PLAN
3/32" = 1'-0"



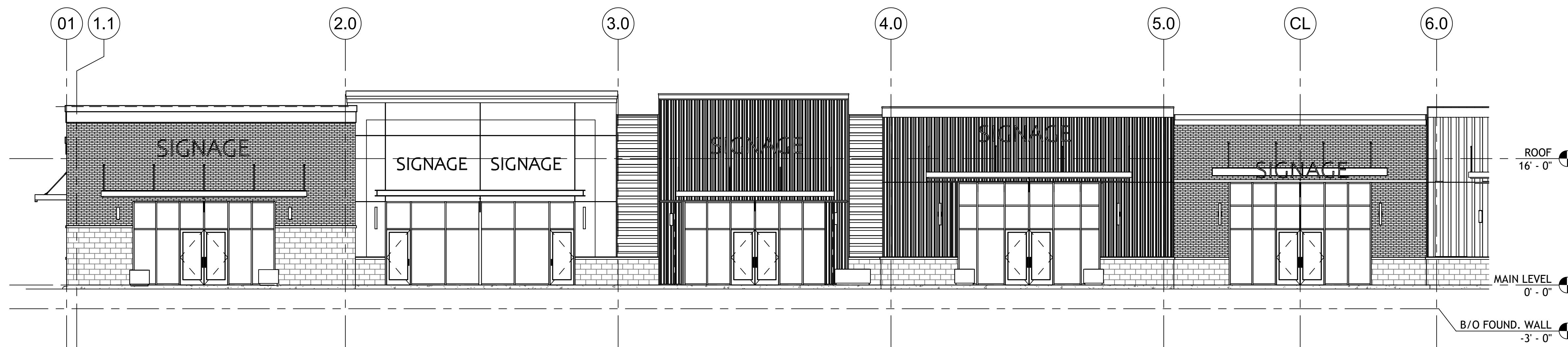
2 EAST ELEVATION
NTS

No.	Description	Date

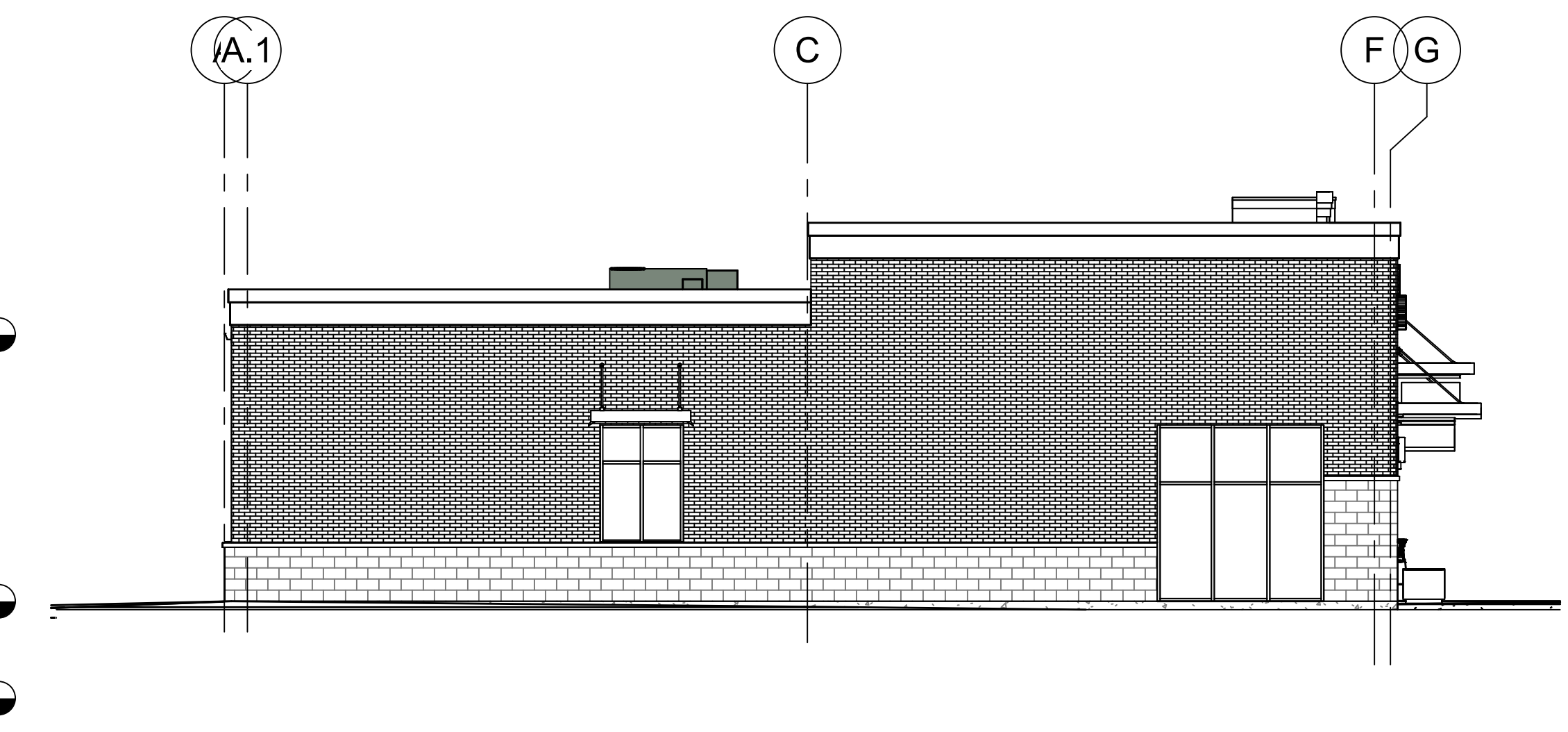
DATE	11/19/24
PROJECT NO.	24005
DRAWN BY	Author

COPYRIGHT WILDESIGN ARCHITECTS PLLC.
USE OF THESE DOCUMENTS SHALL BE
RESTRICTED TO THE ORIGINAL SITE FOR
WHICH THEY WERE PREPARED.
PUBLICATION THERE OF IS EXPRESSLY
LIMITED TO SUCH USE. RE-USE,
REPRODUCTION OR PUBLICATION IN
WHOLE OR IN PART IS PROHIBITED. READ
DIMENSIONS AND DO NOT SCALE
DRAWINGS. REPORT ANY
INCONSISTENCIES TO THE ARCHITECT
IMMEDIATELY.

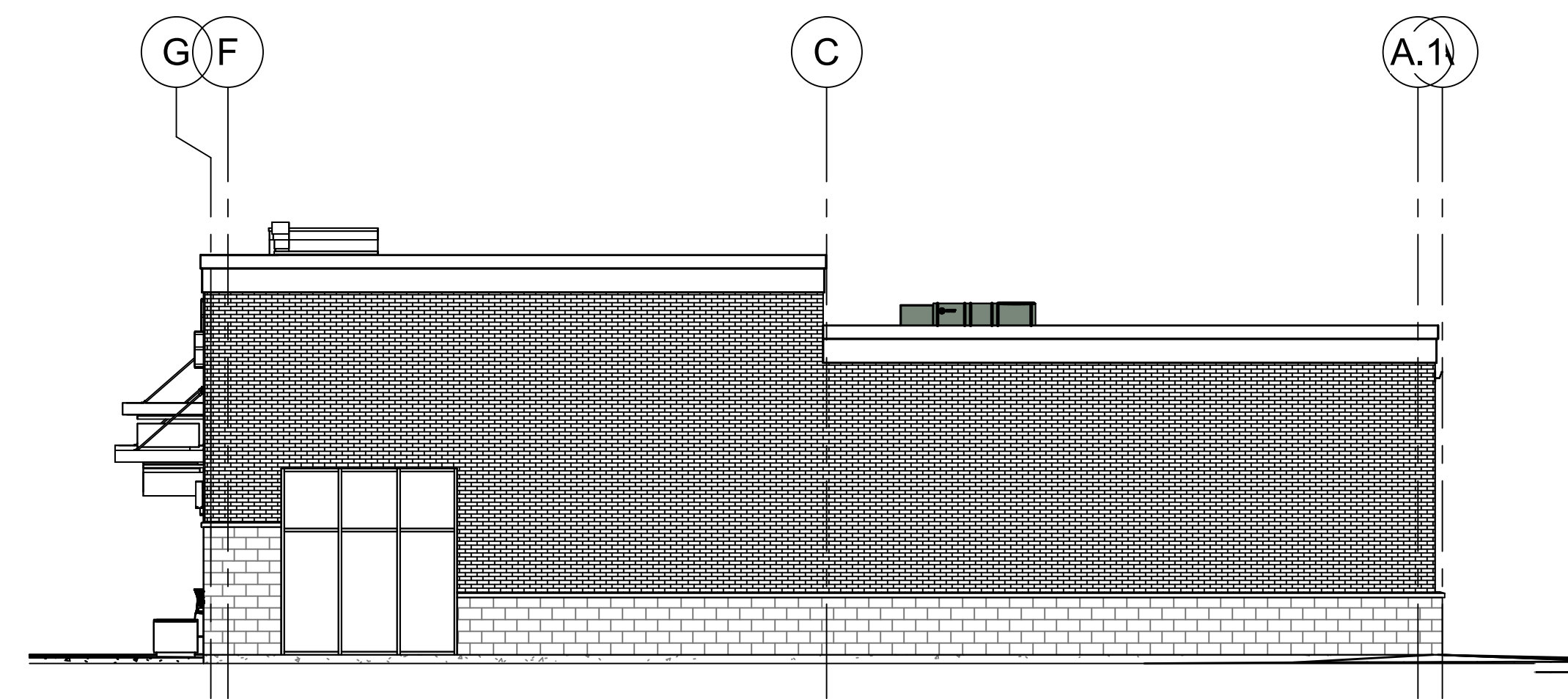
**MAIN LEVEL
FLOOR PLAN**



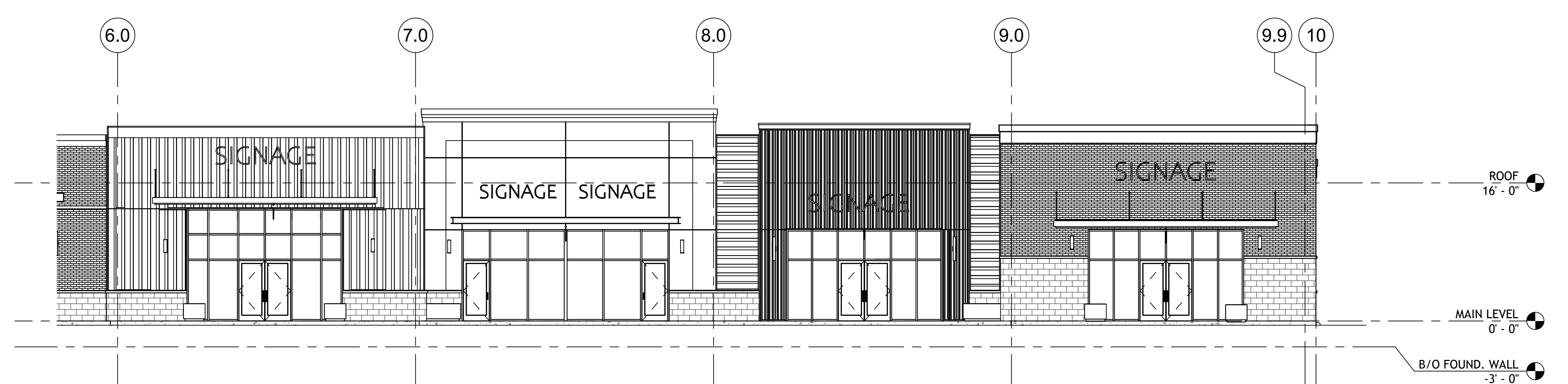
1 PARTIAL EAST ELEVATION
1/8" = 1'-0"



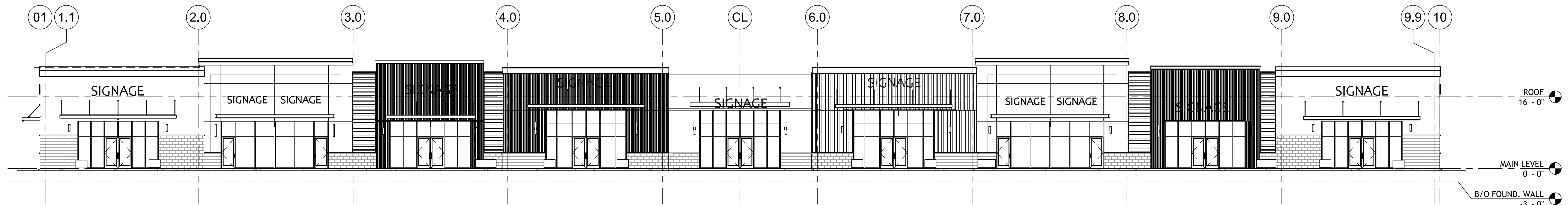
5 SOUTH ELEVATION
1/8" = 1'-0"



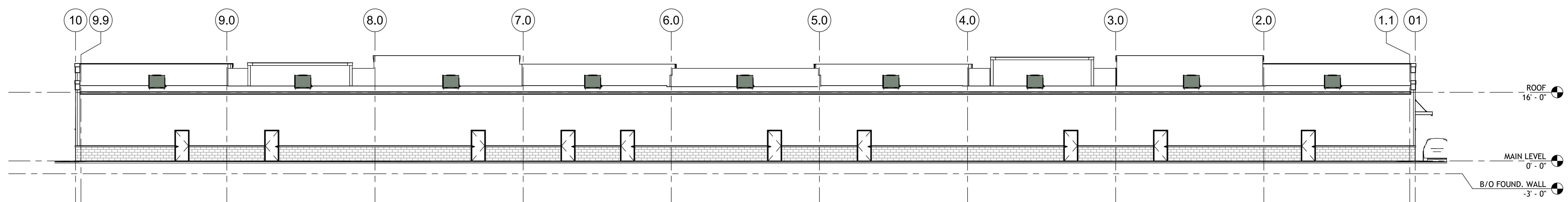
3 NORTH ELEVATION
1/8" = 1'-0"



4 PARTIAL EAST ELEVATION
1/8" = 1'-0"



6 EAST ELEVATION
3/32" = 1'-0"



2 WEST ELEVATION
3/32" = 1'-0"

No.	Description	Date

DATE 11/19/24

PROJECT NO. 24005

DRAWN BY Author

COPYRIGHT WILDESIGN ARCHITECTS PLLC.
USE OF THESE DOCUMENTS SHALL BE
RESTRICTED TO THE ORIGINAL SITE FOR
WHICH THEY WERE PREPARED.
PUBLICATION THERE OF IS EXPRESSLY
LIMITED TO SUCH USE. RE-USE,
REPRODUCTION OR PUBLICATION IN
WHOLE OR IN PART IS PROHIBITED. READ
DIMENSIONS AND DO NOT SCALE
DRAWINGS. REPORT ANY
INCONSISTENCIES TO THE ARCHITECT
IMMEDIATELY.

**EXTERIOR
ELEVATIONS**

A2.00

IL DESIGN FIRM: 184.008733-0001



WILDESIGN
ARCHITECTS

PBS
plan | design | build -

REAL: EXPIRES:

SUNCREST RETAIL CENTER
HWY 231
ST. JOHN, IN.

KEY

REACHING THE
NEXT
GENERATION

PROGRESS SET
NOT FOR CONSTRUCTION

[illegible]

TE 11/19/24

PROJECT NO. 24005

DRAWN BY: Author

PYRIGT WILDESIGN ARCHITECTS PLLC.
 SE OF THESE DOCUMENTS SHALL BE
 STRICTED TO THE ORIGINAL SITE FOR
 WHICH THEY WERE PREPARED.
 PUBLICATION THERE OF IS EXPRESSLY
 LIMITED TO SUCH USE. RE-USE,
 REPRODUCTION, OR PUBLICATION IN
 WHOLE OR IN PART IS PROHIBITED. READ
 DIMENSIONS AND DO NOT SCALE
 DRAWINGS. REPORT ANY
 INCONSISTENCIES TO THE ARCHITECT
 IMMEDIATELY.

IMAGES

A2.02

AL DESIGN FIRM: 184.008733-0001



No.	Description	Date