

Joe Goldsmith, Broker
Tel: 214 / 499-8569
Email: gdj405@gmail.com

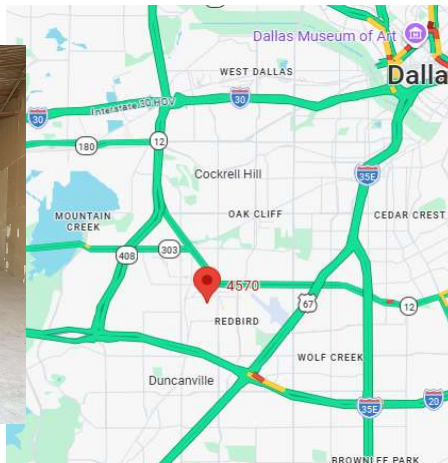
For Lease

4540 - 4576 Brass Way
Dallas, TX 75236

Brass Way Business Park

Asking Rate \$9.00 Gross
SF Availbale 3,510 7,020 10,530

Grade Level Door	
YOC 1980	Bldg. Sqft 67,100
Office 10%	CH 14ft



Aerial

Date of copy: 2/25/2026

DCAD Tax Account: 00000655323650000



4572 3,510sf

4574 3,510sf

4576 3,510sf

4566 7,020sf

4546 3,510sf

4546 3,510sf

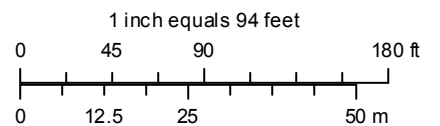
Brass Way

DCAD, Esri, HERE, © Garmin, (©) OpenStreetMap contributors, Eagleview

This product is for INFORMATIONAL purposes only and may not have been prepared for or be suitable for legal, engineering, or surveying purposes. It does not represent an on-the-ground survey and represents only the approximate relative location of property boundaries.



Dallas Central Appraisal District
2949 N Stemmons Freeway
Dallas, TX 75247-6195
(214) 631-1342
www.dallascad.org



DCAD, NCTCOG, USGS, Esri, Inc

Door

GL Door

4544 Brass Way
Total 3,510 SF

Bathroom

Bathroom

Office /
Entry Way

Office

Office

Door

Door

GL Door

4546 Brass Way
Total 3,510 SF

Bathroom

Bathroom

Office /
Entry Way

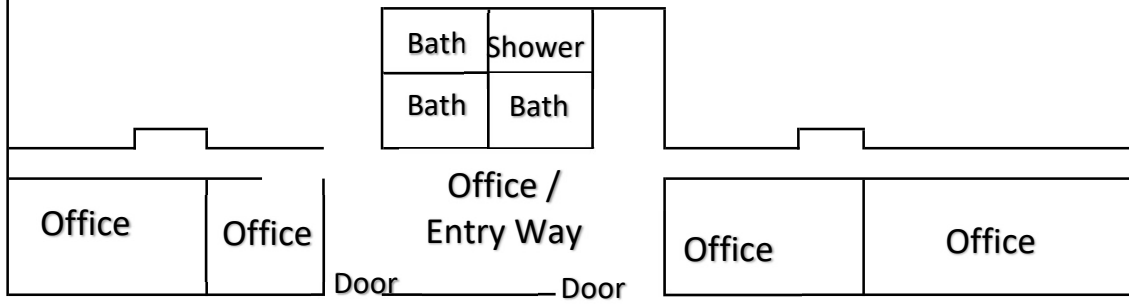
Office

Office

Door

Door — GL Door — Door — GL Door

4566 Brass Way
Total 7,020 SF



Door

GL Door

4572 Brass Way
Total 3,510 SF

Bathroom

Bathroom

Office /
Entry Way

Door

Office

Office

Door

GL Door

4574 Brass Way
Total 3,510 SF

Bathroom

Bathroom

Office /
Entry Way

Office

Office

Door

