



17 Willow Road

Maple Shade, New Jersey

Property Description

- 3,340± SF industrial/retail building
- Block 189.04, Lot 4.02
- Lot size: 0.42± acres
- Built in 2008; excellent condition
- Zoned C - General Commercial District
- Front office and loft space
- 26' ceiling height in warehouse
- 2 oversized drive-in doors
- Outdoor lighting
- Well maintained landscaping with irrigation system
- Taxes (2023) \$20,888.56

Location Information

- Adjacent to Moorestown Mall and East Gate Square
- Close proximity to Routes 38 & 73, I-295 (Exit 36) and NJ Turnpike (Exit 4)

21 Roland Avenue
 Mount Laurel, New Jersey
 +1 856 234 9600

naimertz.com

Demographics

	1 mi	3 mi	5 mi
Population	7,322	81,064	215,173
Households	3,461	32,612	83,068
Median Household Income	\$68,177	\$85,029	\$93,044

For more information:

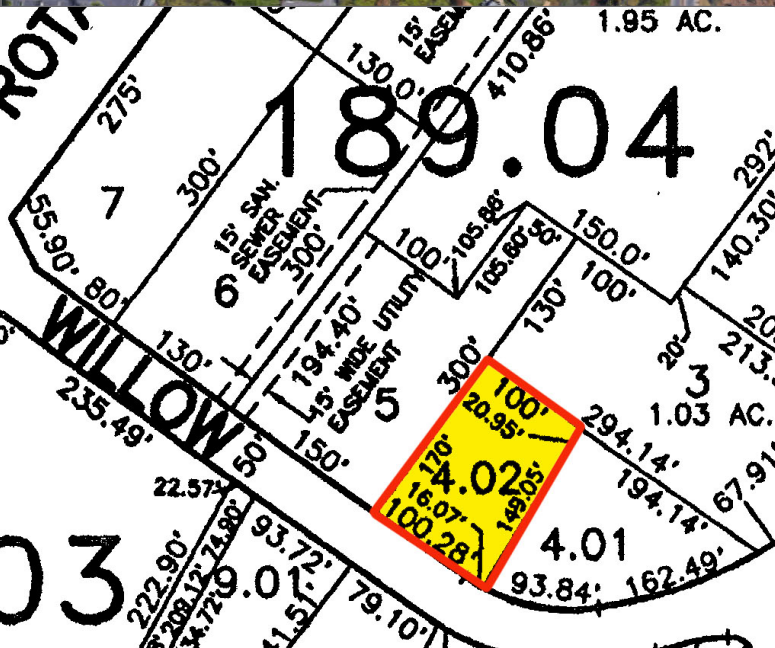
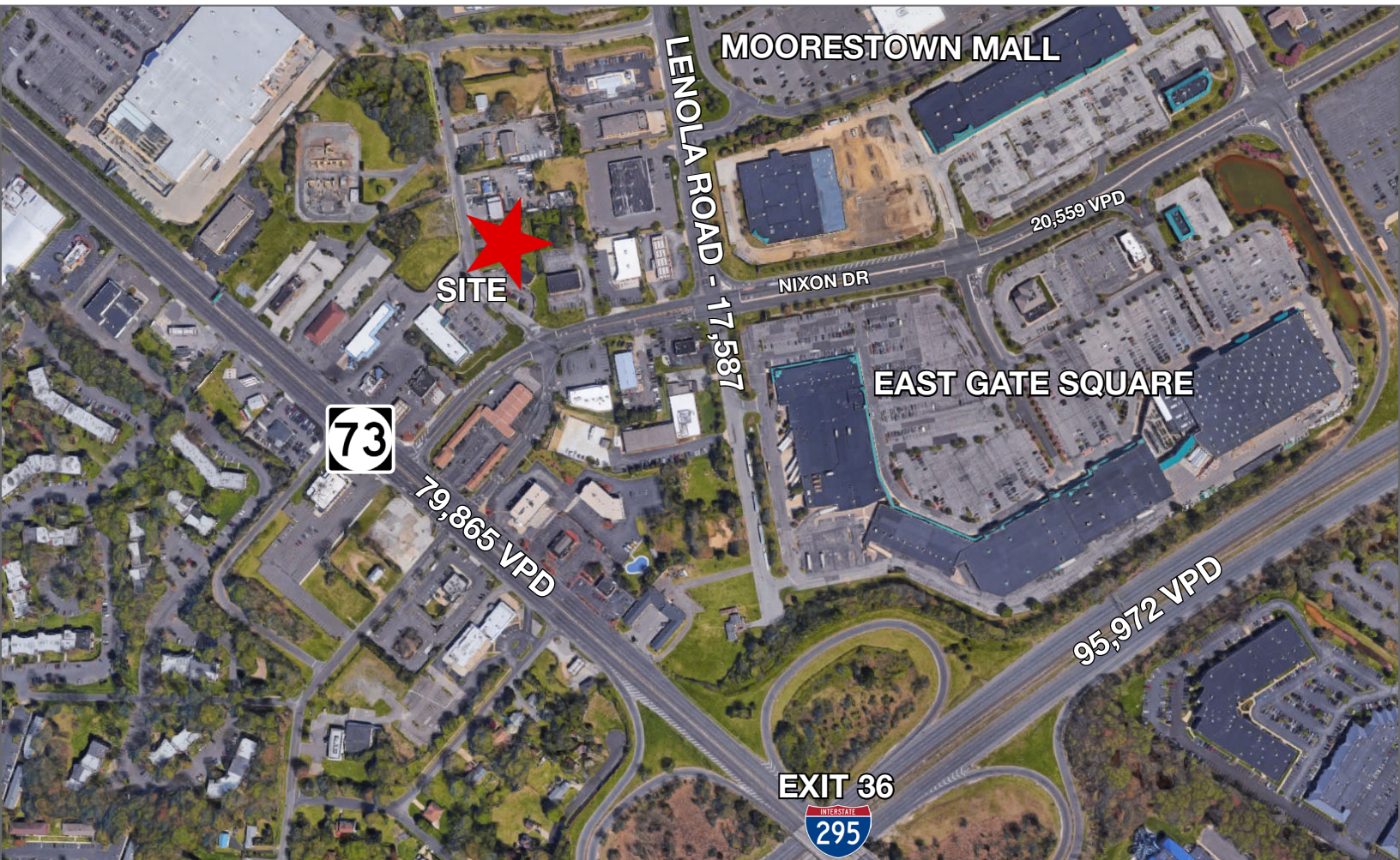
Rebecca Ting, SIOR

+1 856 234 9600 • rebecca.ting@naimertz.com

Julie Kronfeld, SIOR

+1 856 802 6516 • julie.kronfeld@naimertz.com

NO WARRANTY OR REPRESENTATION, EXPRESS OR IMPLIED, IS MADE AS TO THE ACCURACY OF THE INFORMATION CONTAINED HEREIN, AND THE SAME IS SUBMITTED SUBJECT TO ERRORS, OMISSIONS, CHANGE OF PRICE, RENTAL OR OTHER CONDITIONS, PRIOR SALE, LEASE OR FINANCING, OR WITHDRAWAL WITHOUT NOTICE, AND OF ANY SPECIAL LISTING CONDITIONS IMPOSED BY OUR PRINCIPALS NO WARRANTIES OR REPRESENTATIONS ARE MADE AS TO THE CONDITION OF THE PROPERTY OR ANY HAZARDS CONTAINED THEREIN ARE ANY TO BE IMPLIED.



21 Roland Avenue
Mount Laurel, New Jersey
+1 856 234 9600

naimertz.com

NO WARRANTY OR REPRESENTATION, EXPRESS OR IMPLIED, IS MADE AS TO THE ACCURACY OF THE INFORMATION CONTAINED HEREIN, AND THE SAME IS SUBMITTED SUBJECT TO ERRORS, OMISSIONS, CHANGE OF PRICE, RENTAL OR OTHER CONDITIONS, PRIOR SALE, LEASE OR FINANCING, OR WITHDRAWAL WITHOUT NOTICE, AND OF ANY SPECIAL LISTING CONDITIONS IMPOSED BY OUR PRINCIPALS NO WARRANTIES OR REPRESENTATIONS ARE MADE AS TO THE CONDITION OF THE PROPERTY OR ANY HAZARDS CONTAINED THEREIN ARE ANY TO BE IMPLIED.