



Tenant pays electricity,
internet, phone and
cleaning .

Newly remodel Restrooms

For lease

Offered at:

\$12.00 SF/YEAR

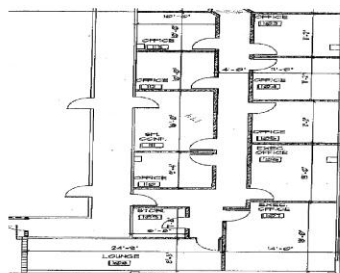
Building leasable unit

2305 Sqf

High visibility

Centrally located in

Seminole county



Easy Access to 1-4, 417,
Sanford/ Orlando Airport,
Seminole college

Great location for office,
CPA/LAW office
professionally managed

Ample parking spaces
with small covered
parking area

Contact: Louis F Joachim

Office #: 407-333-0711

Cell#: 407-492-9488

Email: info@doverintl.com