



FOR SUBLEASE

Asking Rate:

\$33.00
PSF NNN

Contact us:

Alan W. Cole, ccim

Principal & Executive VP | AR
+1 479 644 5849
alan.cole@ar.colliers.com

Mason Wood

Brokerage | AR
+1 479 409 0409
mason.wood@ar.colliers.com



Accelerating success.

3503 S 55th Street, Suite 200
Rogers, AR 72758
P: +1 479 636 9000
F: +1 479 254 3799
colliers.com

1210 J.T.L. Parkway Springdale, Arkansas

Property Features

- 3,800 SF retail/restaurant space available
- Lease expiration: February 29, 2028
- 35,000 cars per day and near major traffic light
- Building signage visible on Highway 412
- Abundant well-lit parking field
- Space includes reception area, restrooms, offices and break room
- In direct path of growth along Highway 412 corridor, designated to become a future U.S. interstate

Highly-visible retail on Highway 412 available for lease in sought after shopping center. Located in a heavily trafficked area with national retailers including Harp's Food Stores, Freddy's Frozen Custard, Tropical Smoothie and many others. Adjacent to the property is the 500+ master-planned development, The Crossings with dense residential neighborhoods and Har-ber High School. Location is convenient to Springdale's Care Corridor, Arvest Ballpark and Interstate 49.

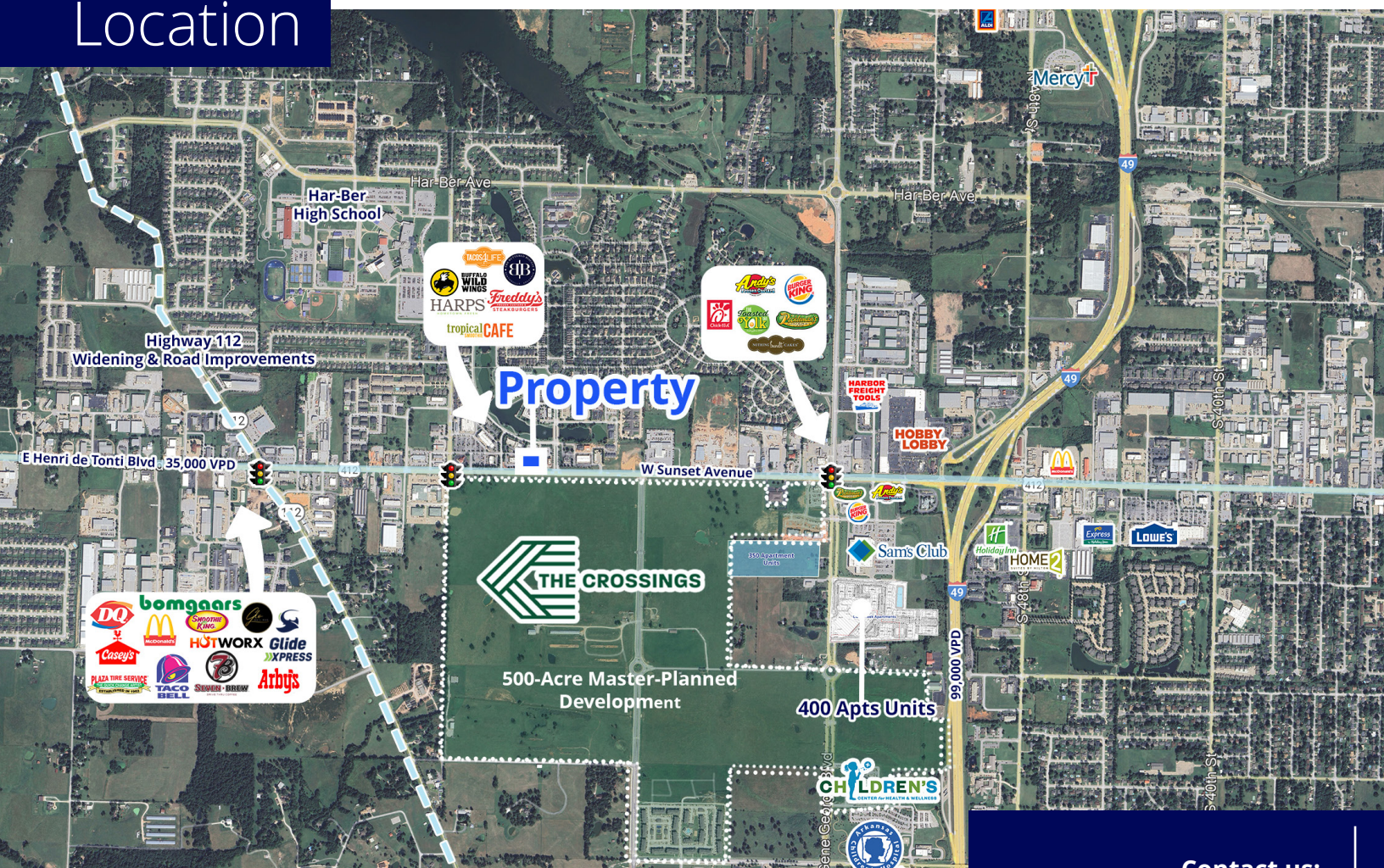
Copyright © 2021 Colliers International.

Information herein has been obtained from sources deemed reliable, however its accuracy cannot be guaranteed. The user is required to conduct their own due diligence and verification.

Exterior Photos



Location



Demographics

Demographics	1 Mile	3 Mile	5 Mile
Population (2024)	4,929	31,083	86,,315
Projected Population (2029)	5,673	33,743	92,458
Average HH Income (2024)	\$138,860	\$107,133	\$98,325
Proj. Average HH Income (2029)	\$152,712	\$124,470	\$114,754
Households (2024)	1,970	11,298	30,427



Contact us:

Alan W. Cole, CCIM

Principal & Executive VP | AR
+1 479 644 5849
alan.cole@ar.colliers.com

Mason Wood

Brokerage | AR
+1 479 409 0409
mason.wood@ar.colliers.com



Accelerating success.

3503 S 55th Street, Suite 200
Rogers, AR 72758
P: +1 479 636 9000
F: +1 479 254 3799
colliers.com