



50 Franklin Street
2nd Floor
Boston, MA 02110

FLEXIBLE WORKSPACE 20 PERSON SUITE

Availability: Sept 2025
Capacity: 20 people
Size: 1,000 RSF

Situated in the heart of Boston's Financial District, a short walk from Downtown Crossing and South Station, a new era of workspace excellence awaits.

Offering private and team offices, virtual office solutions, and state-of-the-art meeting rooms, 50 Franklin combines a prime location with unparalleled amenities to create Boston's premier destination for productivity, collaboration, and growth.

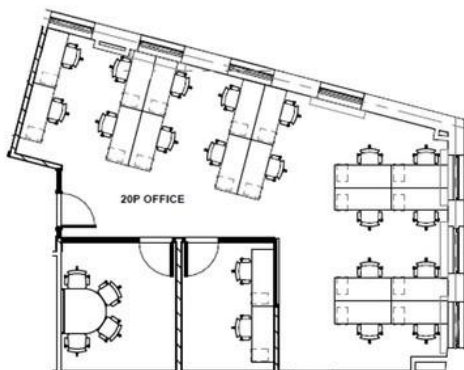
Designed for a growing company, this fully serviced 1,000sf turn-key workspace offers the perfect balance of privacy, collaboration, and scalability along with access to a state-of-the-art Meeting Room, surrounded with modern furnishings.

20 Person Suite

- Dedicated Suite for 20 people Available
- 1,000 SF
- Includes Open plan for 18 people
- Dedicated 4 person Huddle Room Private
- Executive Office for 1-2 people Fully
- Furnished Workstations (sit stand desks)
- Super Fast WIFI

Access to:

- Phone Booths
- 8 person Meeting Room
- Fully Equipped Kitchen
- Unlimited Coffee, Tea, Spring Water





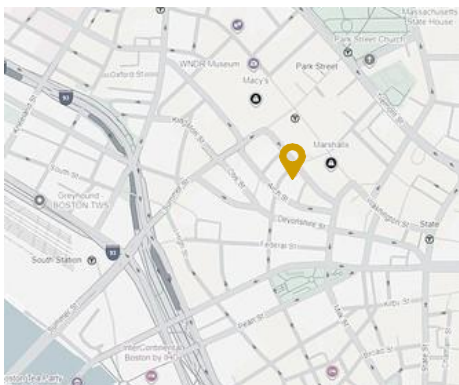
AMENITIES

- Access to an additional 4,000sf
- Full kitchen cafe
- Complimentary gourmet coffee, tea
- Spring and Sparkling Water
- Common Area workspaces
- Phone Booths
- Wellness Room
- Mail & Package Handling
- Meeting Room Access
- Utilities and Cleaning Included

FINISHES



LOCATION



CONTACT US

Email us:

info@50franklin.com

Visit us:

www.50franklin.com

Call: 617 588 3507

