

2910 Denby Ave

2910 Denby Ave, Los Angeles, CA 90039



Presented By:
Secret HQ, Inc.



2910 Denby Ave

2910 Denby Ave, Los Angeles, CA 90039

Property Details

Versatile Industrial Property for Lease – 800 SF Office on 5,265 SF Lot
Location: Los Angeles County
Zoning: LACM (Light Industrial)
Size: 800 sq ft office building on a 5,265 sq ft lot
View photos and videos:
<https://drive.google.com/drive/folders/15HqPBNRTkO8StCUayk54osjUZcDL3qdh?usp=sharing>

Flexible Outdoor Space: Expansive paved lot, partially shaded—ideal for various industrial applications. 4 rainwater collection barrels will remain on lot.
Outdoor Amenities: Equipped with an outdoor sink, water fountain to support diverse operational needs.
Previous Use: Formerly utilized by Hughes Estate Sales for both indoor and open-air vintage market sales.
Zoning Compliance: Property is zoned LACM, accommodating a wide range of industrial uses.
Ideal Uses Include:
Storage or placement of storage containers
Garden center or nursery operations
Construction, manufacturing, or builder's yard
Welding or fabrication shop
Automotive services or dismantling yard
Other industrial uses as approved by Los Angeles County Planning

Please reach out via email or through this listing with details about your intended use. We are eager to discuss how this property can meet your operational needs.

Price: Upon Request

- 800sf office
- 5,265 lot is partial in shade/indoor/outdoor
- Frogtown/Atwater Village/Elysian Valley location
- Manufacturing/Light Industrial/Automotive/Garden
- Storage/Container use
- Available immediately

View the full listing here: <https://www.loopnet.com/Listing/2910-Denby-Ave-Los-Angeles-CA/35674630/>

Rental Rate:	Upon Request
Property Type:	Industrial
Property Subtype:	Manufacturing
Rentable Building Area :	800 SF
Year Built:	1924
Rental Rate Mo:	Upon Request

2910 Denby Ave

2910 Denby Ave, Los Angeles, CA 90039

Listing space

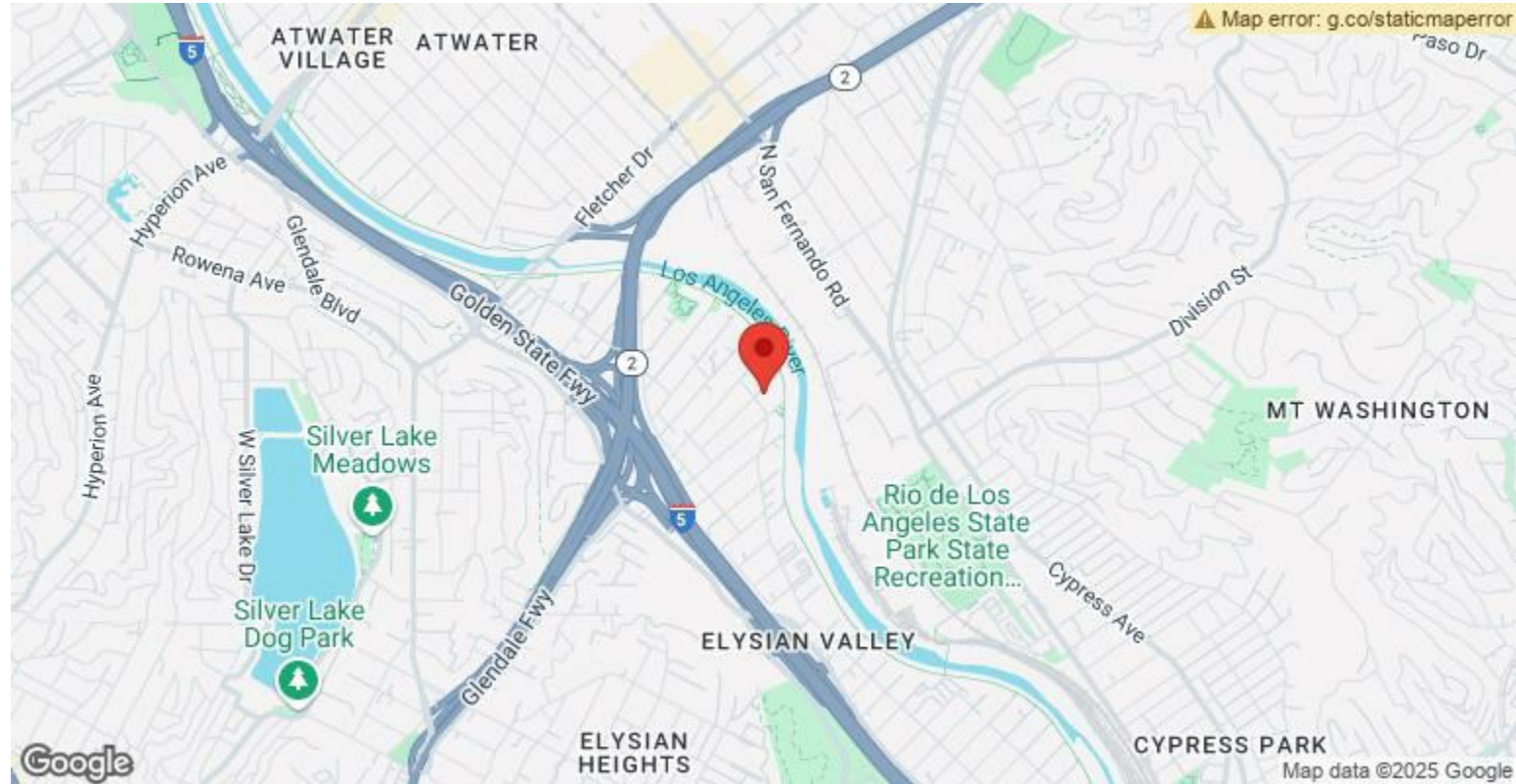
1st Floor	Space Available:	800 SF
	Rental Rate:	Upon Request
	Date Available:	May 01, 2025
	Service Type:	Modified Gross
	Office Size:	800 SF
	Space Type:	New
	Space Use:	Industrial
	Lease Term:	Negotiable

FROGTOWN!Versatile Industrial Property for Lease – 800 SF Office on 5,265 SF LotLocation: Los Angeles County Zoning: LACM Size: 800 sq ft office building on a 5,265 sq ft lot?Property Highlights:Flexible Outdoor Space: Expansive paved lot, partially shaded—ideal for various industrial applications.Outdoor Amenities: Equipped with an outdoor sink to support diverse operational needs.Previous Use: Formerly utilized by Hughes Estate Sales for both indoor and open-air vintage market sales.Zoning Compliance: Property is zoned LACM, accommodating a wide range of industrial uses. Note: Live/work arrangements are not permitted on this property.?Ideal Uses Include:Storage or placement of storage containersGarden center or nursery operationsConstruction, manufacturing, or builder's yardWelding or fabrication shopAutomotive services or dismantling yardOther industrial uses as approved by Los Angeles County?L.A. County PlanningContact Information:Please reach out via email or through this listing with details about your intended use. We are eager to discuss how this property can meet your operational needs. Available immediately.

2910 Denby Ave

2910 Denby Ave, Los Angeles, CA 90039

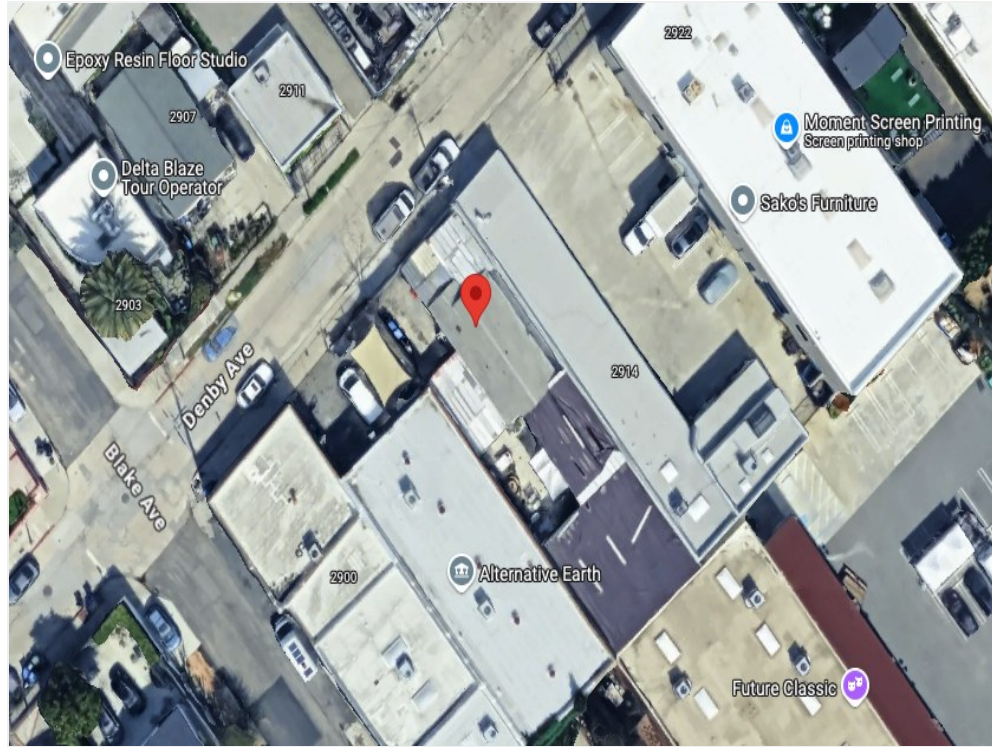
Location



2910 Denby Ave

2910 Denby Ave, Los Angeles, CA 90039

Property Photos



Aerial view



Exterior view for estate sale

2910 Denby Ave

2910 Denby Ave, Los Angeles, CA 90039



L. Annie Adjchavanich

SecretHQproperties@gmail.com

(310) 990-3016

Secret HQ, Inc.

727 W 7th St, Suite 1125
Los Angeles, CA 90017

