



207
S BROADWAY

Los Angeles, CA 90012

FOR LEASE

Rare opportunity
for a single user



207SBROADWAY.COM

 Kidder
Mathews



BUILDING — HIGHLIGHTS

FROM

±8,140 SF to 40,960 SF of
contiguous space



SIGNAGE

Available



AMPLE ON-SITE

Parking for tenants and visitors



FIBER

Connectivity available



LOW

Load factor



49.1K
Total SF Available

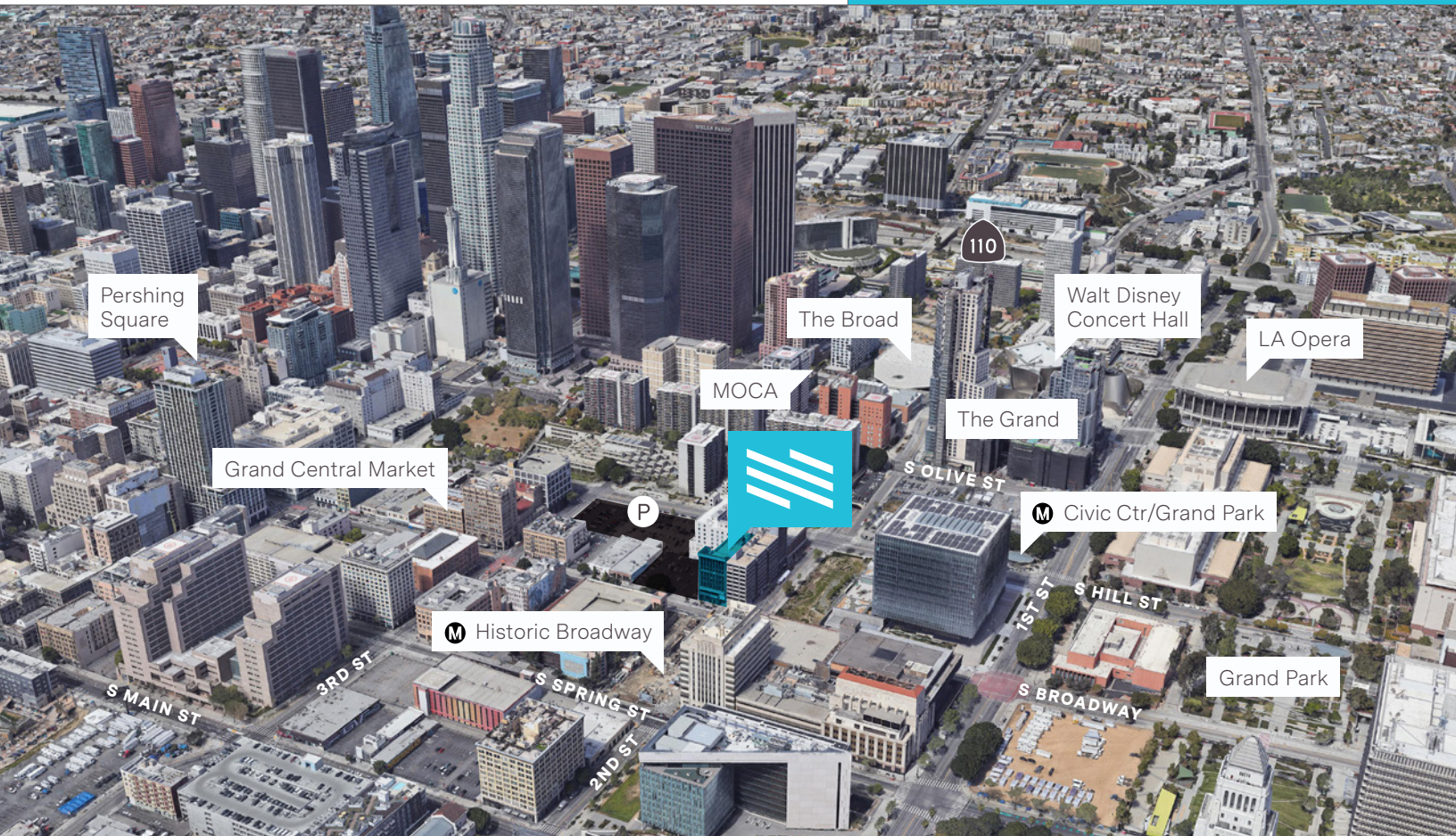
WELCOME TO THE — NEIGHBORHOOD

ACROSS

the street from new regional Metro Hub anticipated to be completed by 2022

NEARBY

amenities include Grand Central Market and Grand Ave Project



LOCAL —AMENITIES



NEIGHBORING —EMPLOYERS



SPACE — AVAILABILITY

SUITE	USE	TYPE	RATE	SF AVAILABLE
200	Office	Direct	Negotiable	8,400
300	Office	Direct	Negotiable	8,140
400	Office	Direct	Negotiable	8,140
500	Office	Direct	Negotiable	8,140
600	Office	Direct	Negotiable	8,140



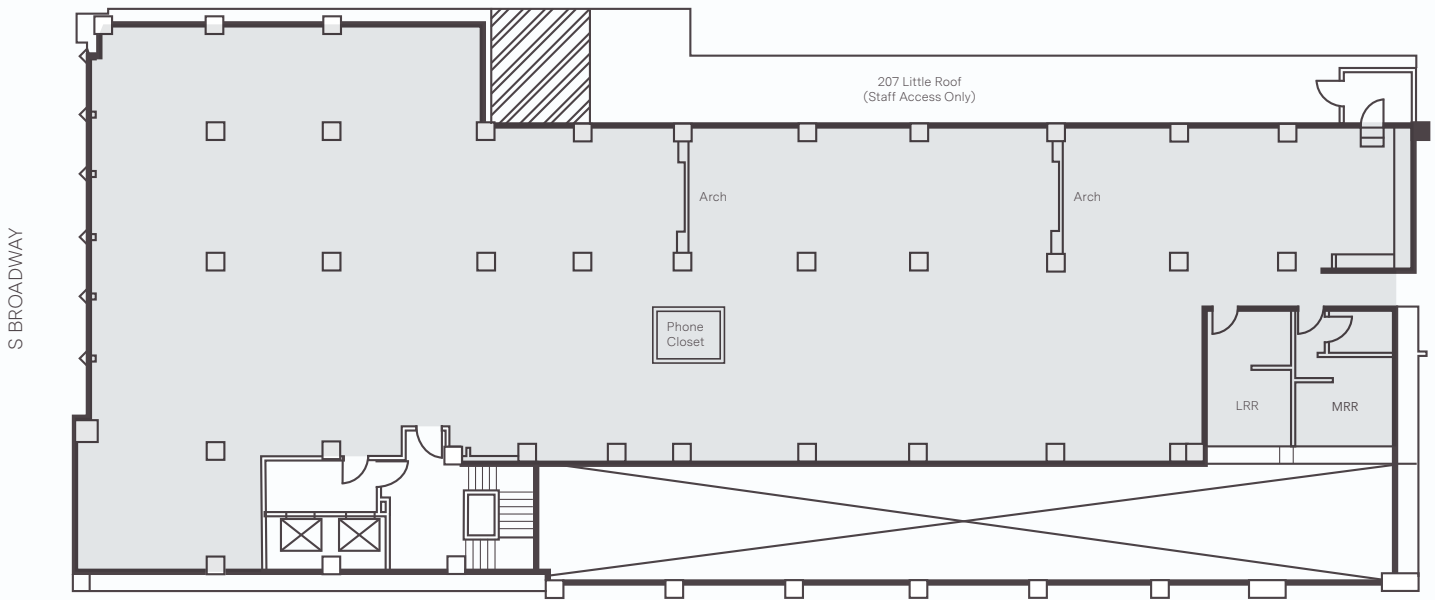


207
S BROADWAY



STUNNING
CREATIVE
OFFICE SPACE
WITH 14'-16'
CEILINGS
AND PRIVATE
OUTDOOR PATIO

PARKING LOT (215 S BROADWAY)



TYPE

Direct

RATE

Negotiable

SF AVAILABLE

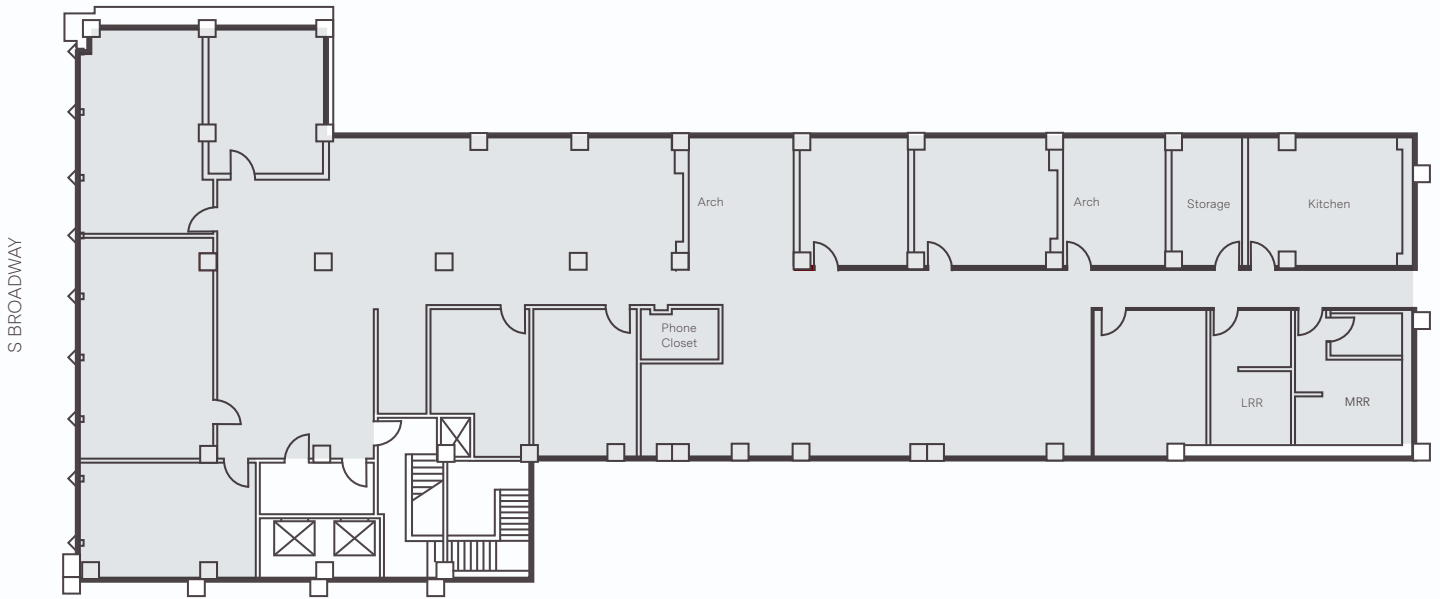
8,400

SUITE

200



PARKING LOT (215 S BROADWAY)



TYPE Direct

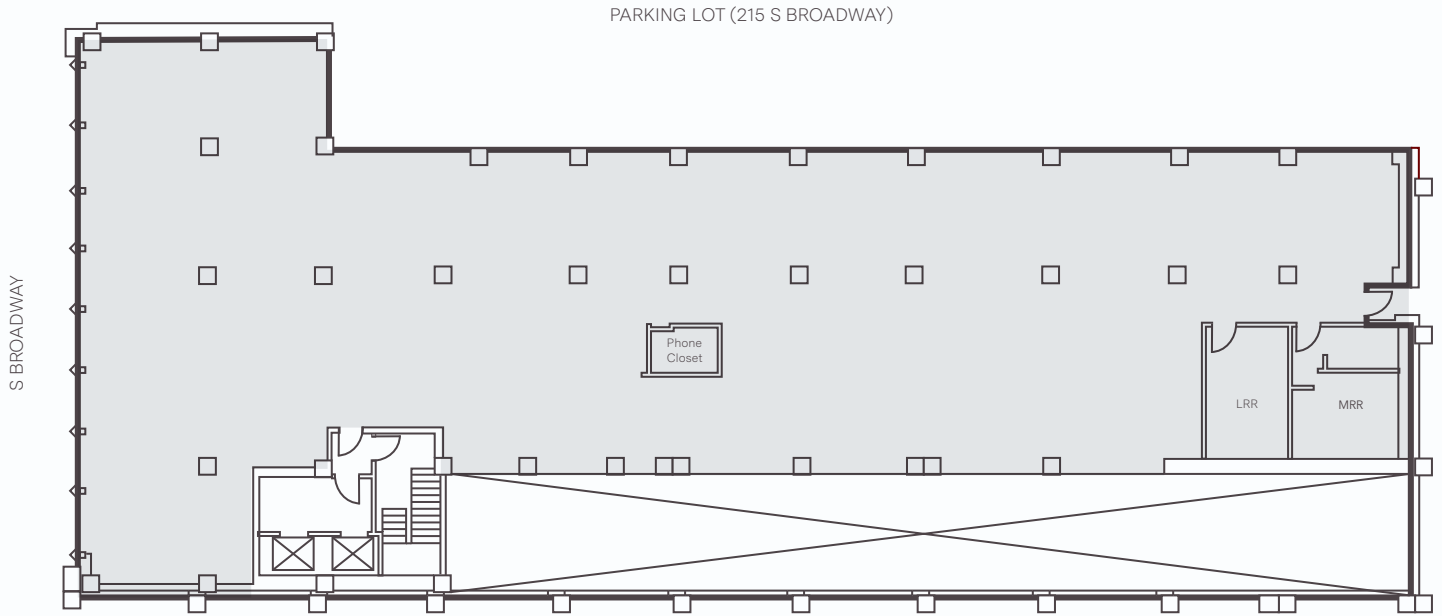
RATE Negotiable

SF AVAILABLE 8,140

SUITE

300





TYPE Direct

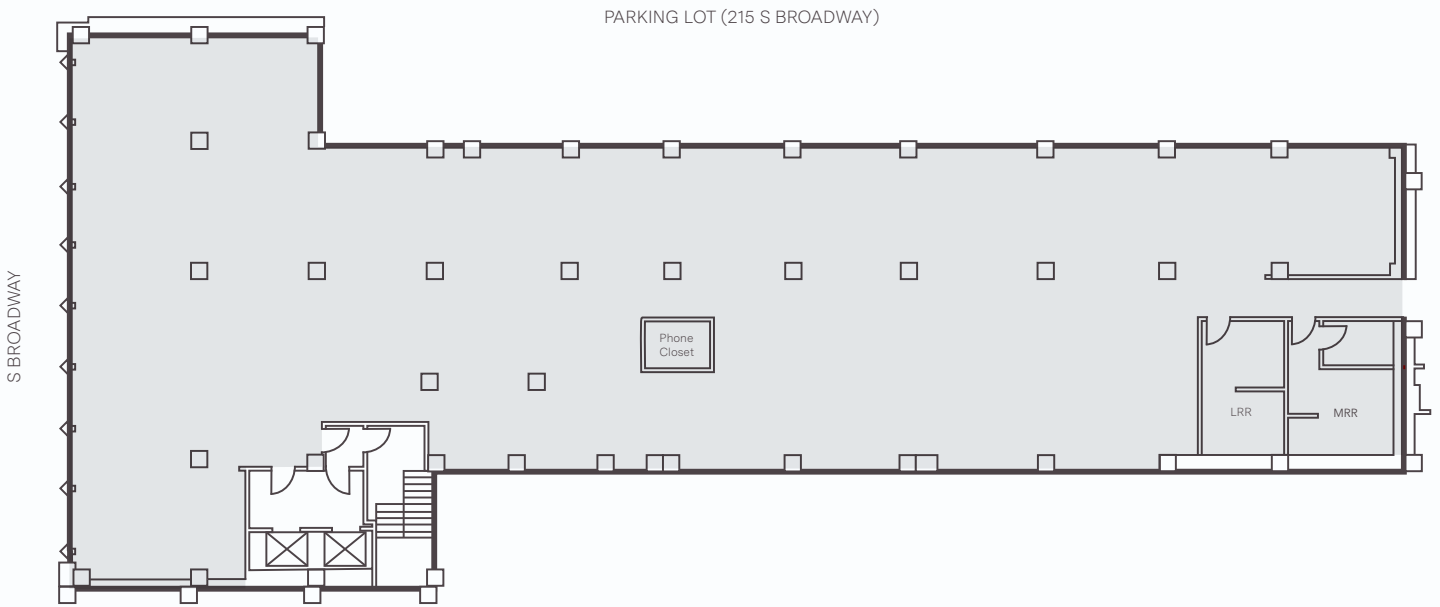
RATE Negotiable

SF AVAILABLE 8,140

SUITE

400





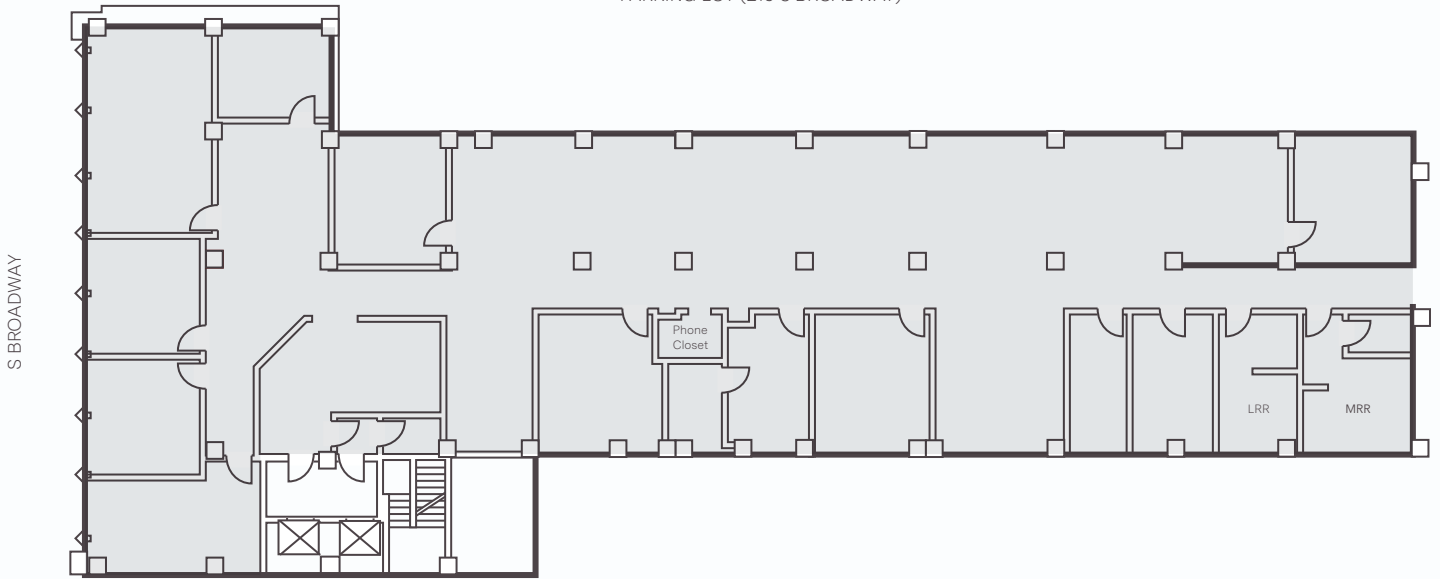
TYPE	Direct
RATE	Negotiable
SF AVAILABLE	8,140

SUITE

500



PARKING LOT (215 S BROADWAY)



TYPE	Direct
RATE	Negotiable
SF AVAILABLE	8,140

SUITE

600





207

SOUTH —
BROADWAY

207SBROADWAY.COM

JOHN ANTHONY, SIOR
213.225.7218
john.anthony@kidder.com
LIC N° 01226464

CHRISTOPHER STECK, CCIM
213.225.7231
christopher.steck@kidder.com
LIC N° 01841338

CHRISTOPHER GIORDANO
213.225.7219
christopher.giordano@kidder.com
LIC N° 01928706

team-asg.com | kidder.com

This information supplied herein is from sources we deem reliable. It is provided without any representation, warranty, or guarantee, expressed or implied as to its accuracy. Prospective Buyer or Tenant should conduct an independent investigation and verification of all matters deemed to be material, including, but not limited to, statements of income and expenses. Consult your attorney, accountant, or other professional advisor.

