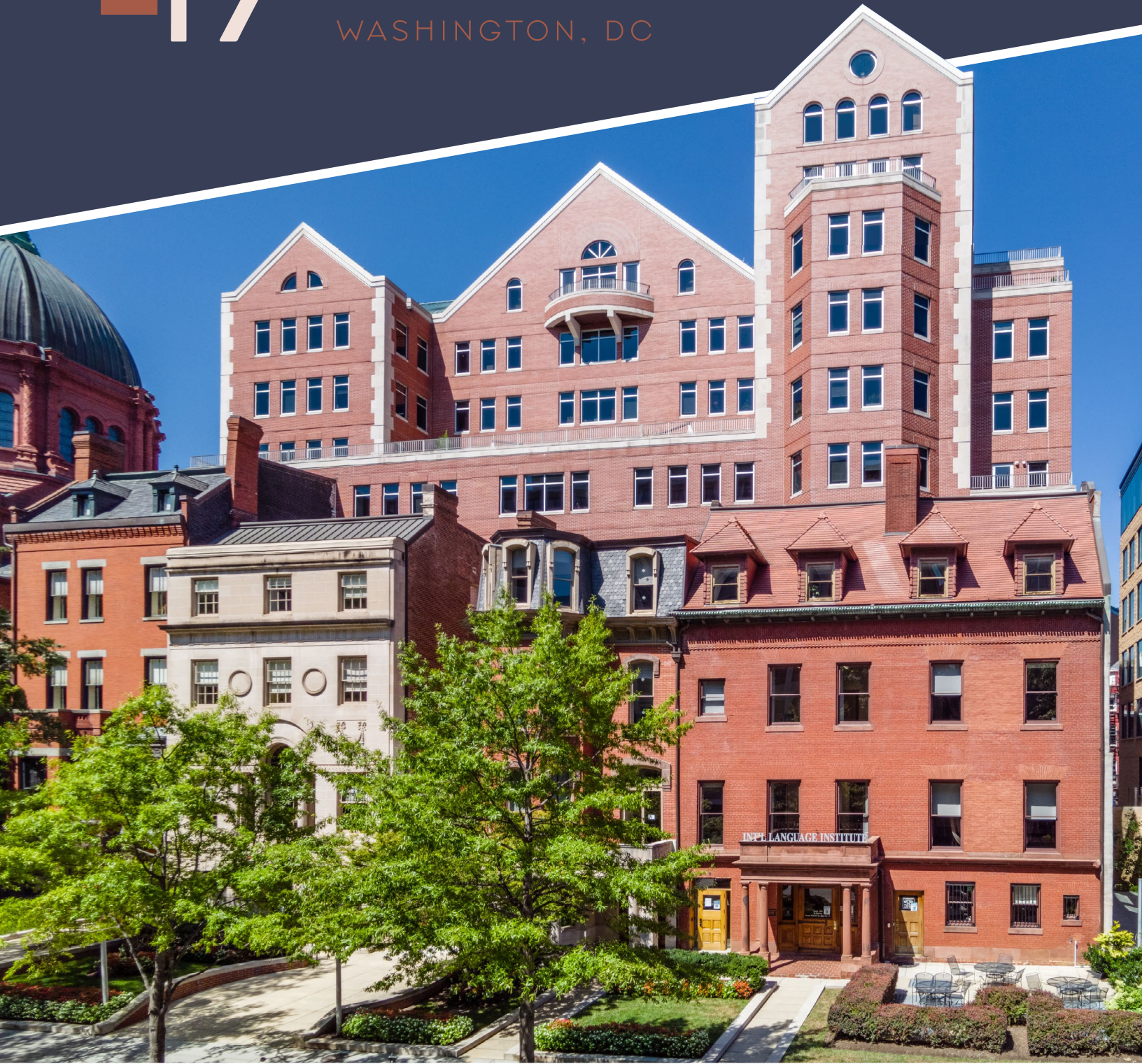


# 17 RHODE ISLAND

WASHINGTON, DC



LEASING INFORMATION  
202.513.6700

Lincoln



# ■ PROPERTY HIGHLIGHTS



Lobby and common areas recently renovated



Fitness facility with spa-like locker rooms



Executive conference center on the ground floor



Great view corridors and setbacks in all directions



Completely freestanding floor plate on all available floors!



VAV HVAC system



On-site parking 1/1,500 SF



Immediate access to Connecticut Avenue/Dupont Circle retail amenities



Metro access within two blocks at Farragut North and Dupont Circle stations

**40,000 SF**  
**TOP-DOWN OPPORTUNITY**  
ON FLOORS 8-10 WITH  
EXCLUSIVE PRIVATE TERRACES!

## AVAILABILITIES

### **SUITE 1000 - FULL FLOOR**

11,929 SF

*Available April 2026*

### **SUITE 900 - FULL FLOOR**

13,938 SF

*Available April 2026*

### **SUITE 800 - FULL FLOOR**

15,182 SF

*Available Immediately*

### **SUITE 640**

4,077 SF

*Available Immediately*

### **SUITE 630**

3,865 SF

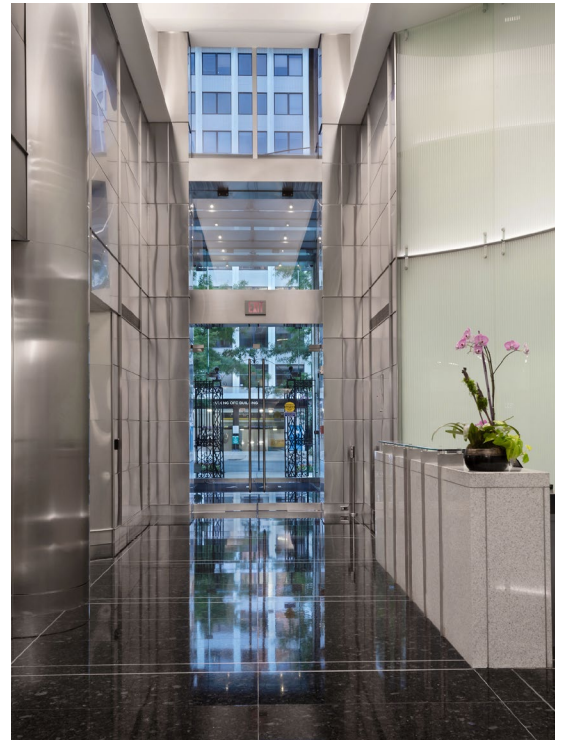
*Available Immediately*

### **SUITE 620**

1,166 SF

*Available Immediately*

## ■ Common Area Photos



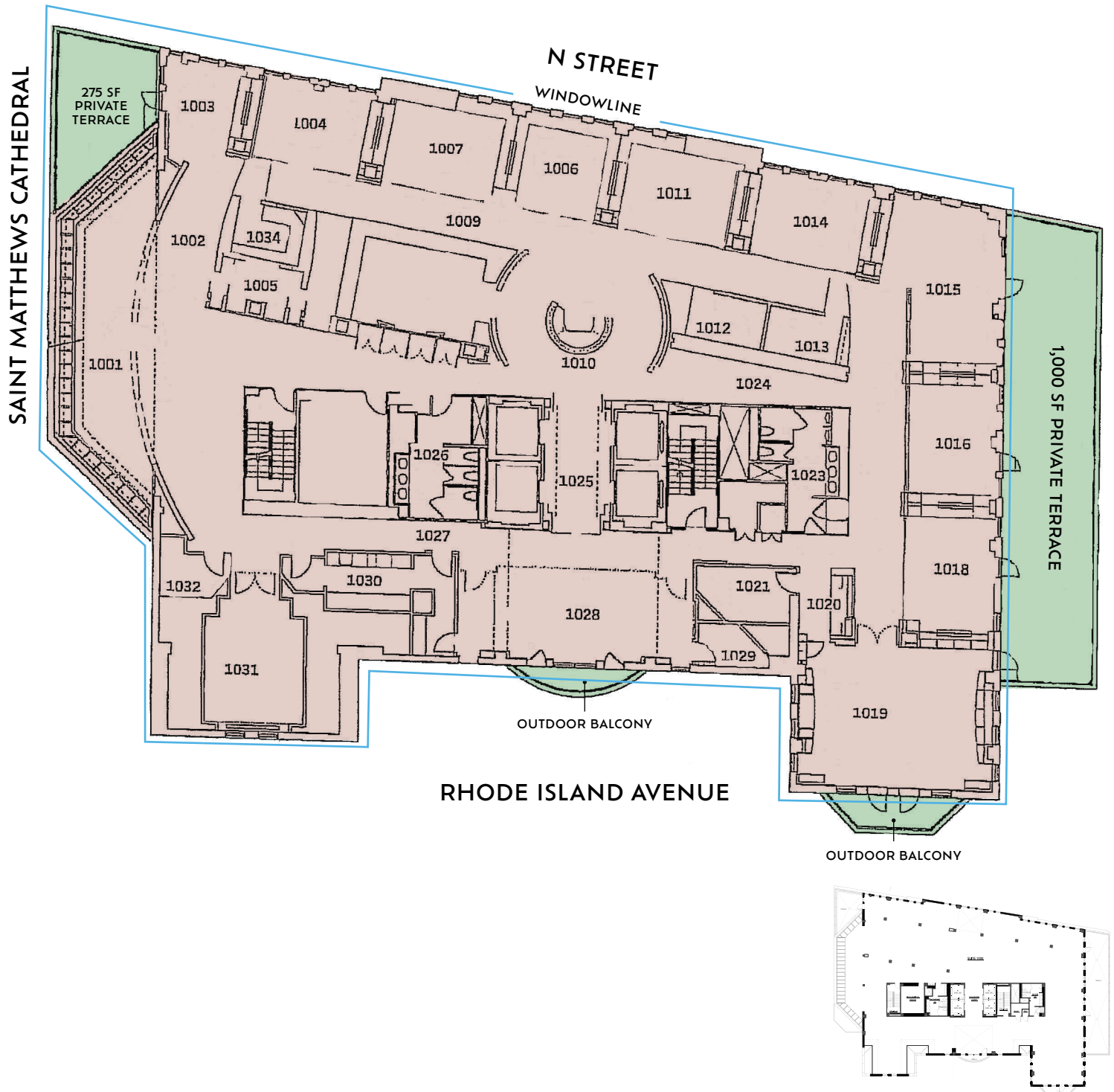


# 10th Floor

## SUITE 1000

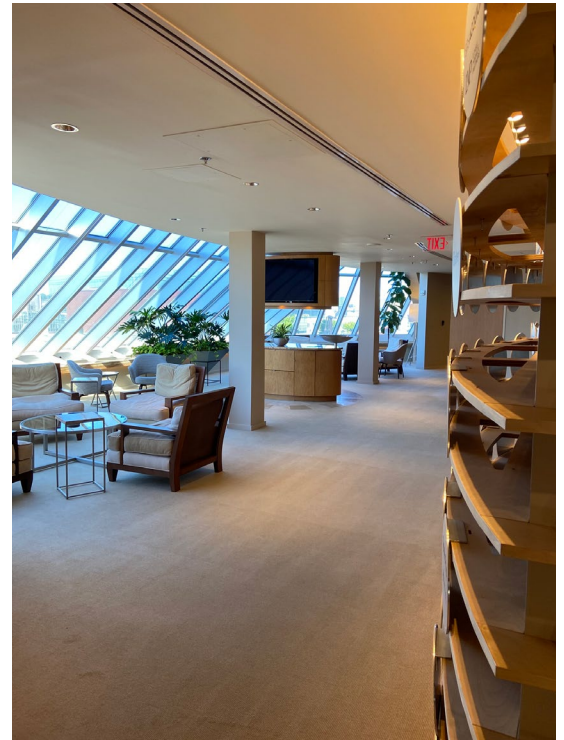
11,929 SF

Available April 2026





## ■ 10th Floor Photos





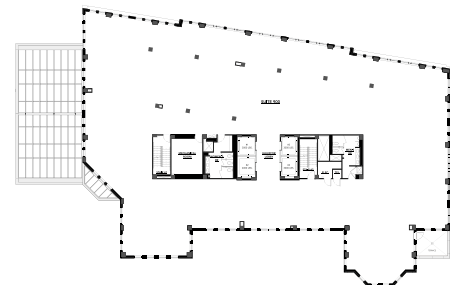
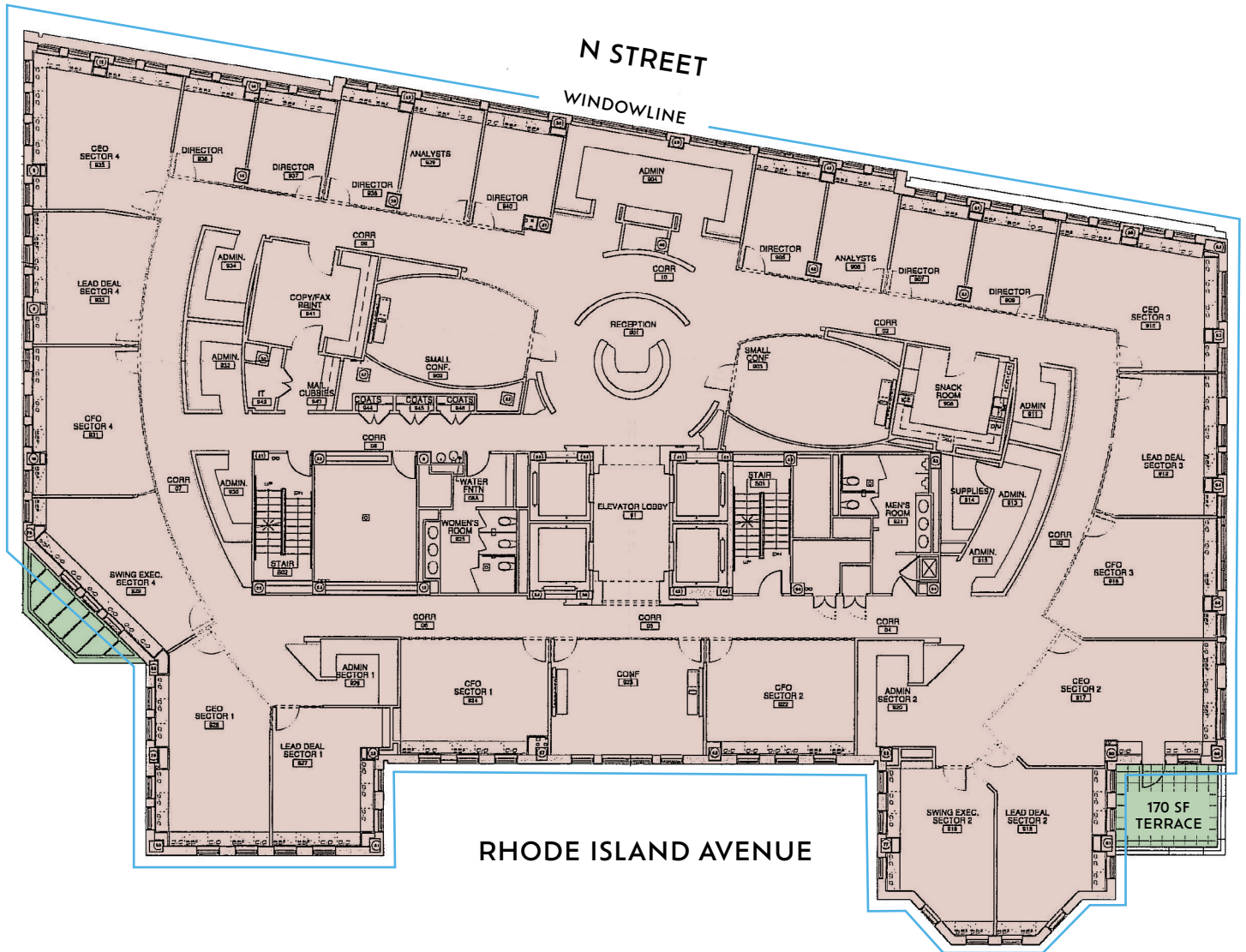
# 9th Floor

## SUITE 900

13,938 SF

Available April 2026

SAINT MATTHEWS CATHEDRAL

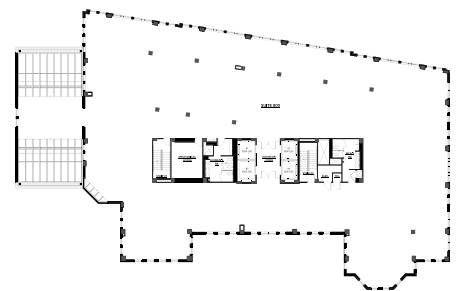


## ■ 8th Floor

### SUITE 800

15,131 SF

*Available Immediately*



# 6th Floor

## SUITE 630

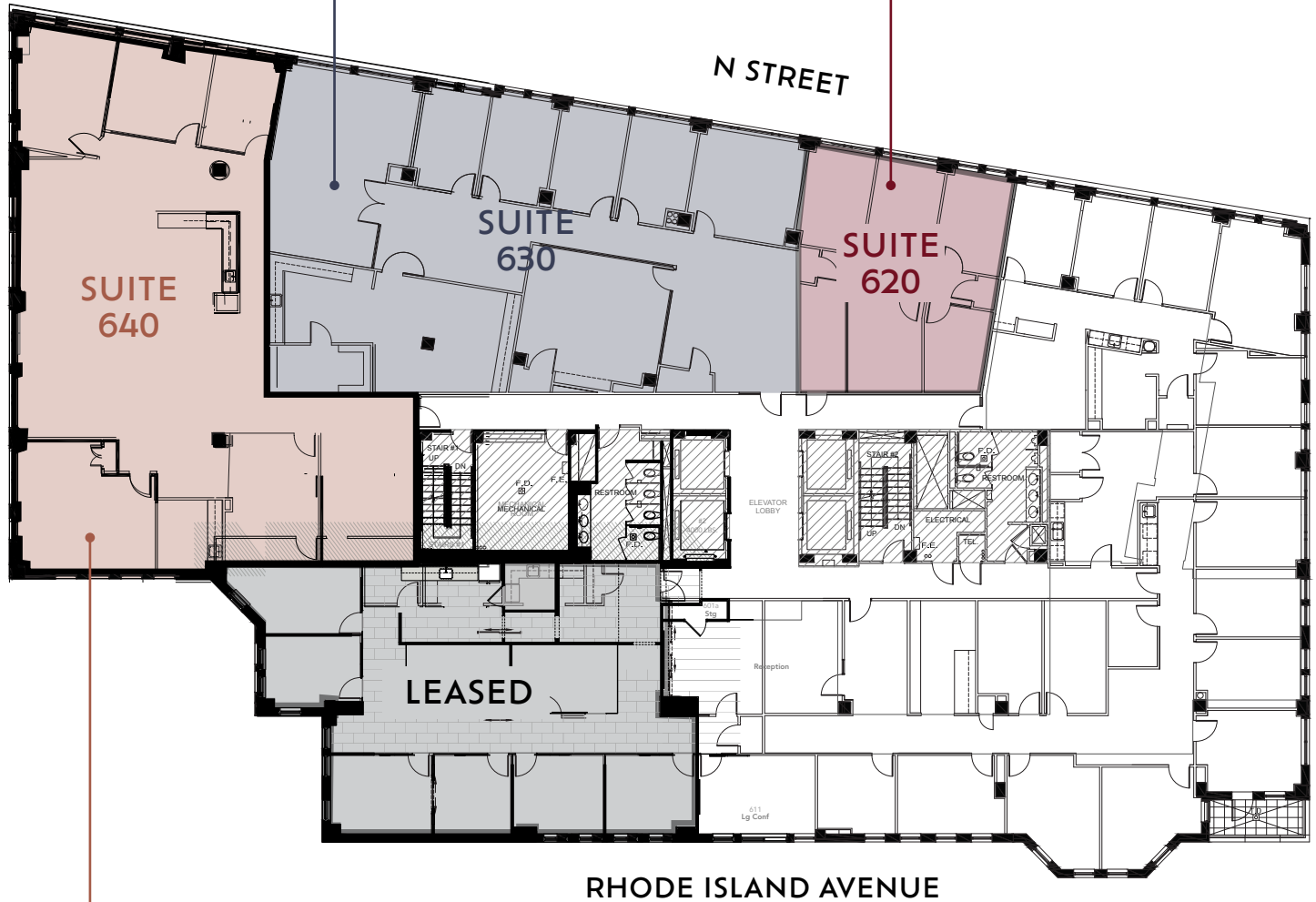
3,865 SF

*Available Immediately*

## SUITE 620

1,166 SF

*Available Immediately*



## SUITE 640

4,077 SF

*Available Immediately*