

CENTERPARK ONE

CLASS 'A' OFFICE SPACE FOR LEASE



4041 POWDER MILL ROAD

CALVERTON, MD 20705

OWNED BY:

KINGDOM
FELLOWSHIP
A M E C H U R C H

LEASING CONTACTS:

Aaron Gambini

agambini@scheerpartners.com
703.472.3737

Dave Edgerley

dedgerley@scheerpartners.com
301.943.9762

15245 Shady Grove Rd, Suite 210N
Rockville, MD 20850

301.337.4700

www.scheerpartners.com



Scheer Partners

A Reputation for Results

CENTERPARK ONE

4041 POWDER MILL RD, CALVERTON, MD

BUILDING FEATURES

- Premier office space with panoramic window line
- Free surface parking. Garage parking available in the building
- Adjacent to Sheraton Hotel with on-site conference facilities, restaurant, fitness center and free shuttle service
- Located on I-95 at Exit 29A/B (190,421 cars per day)
- 5 minutes to I-495 (Beltway) and the ICC (Route 200)
- Convenient to FDA, NASA, NSA and federal agencies
- Metro bus stop at building to Red and Green Line Metro Stations
- Building signage, with I-495 visibility, available for full-floor tenant

FLOOR

SQUARE FEET

RENT

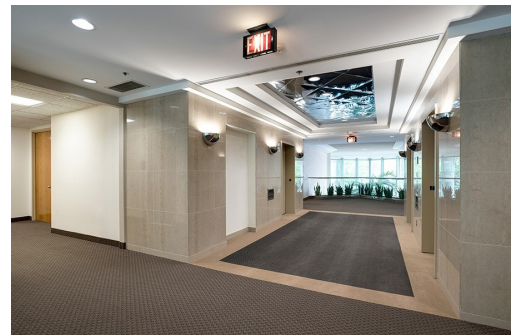
Second Floor

2,997 RSF

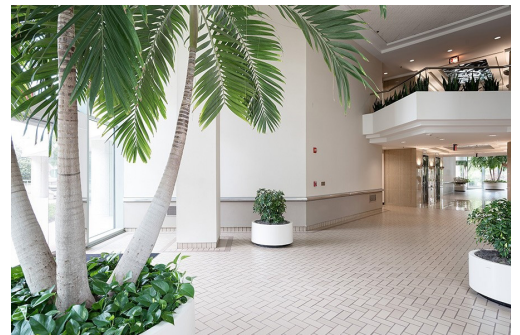
\$22.00 psf, FS



EXTERIOR ENTRANCE



ELEVATOR LOBBY



ATRIUM



OFFICE SPACE



BUILDING ENTRANCE



GARAGE

CENTERPARK ONE

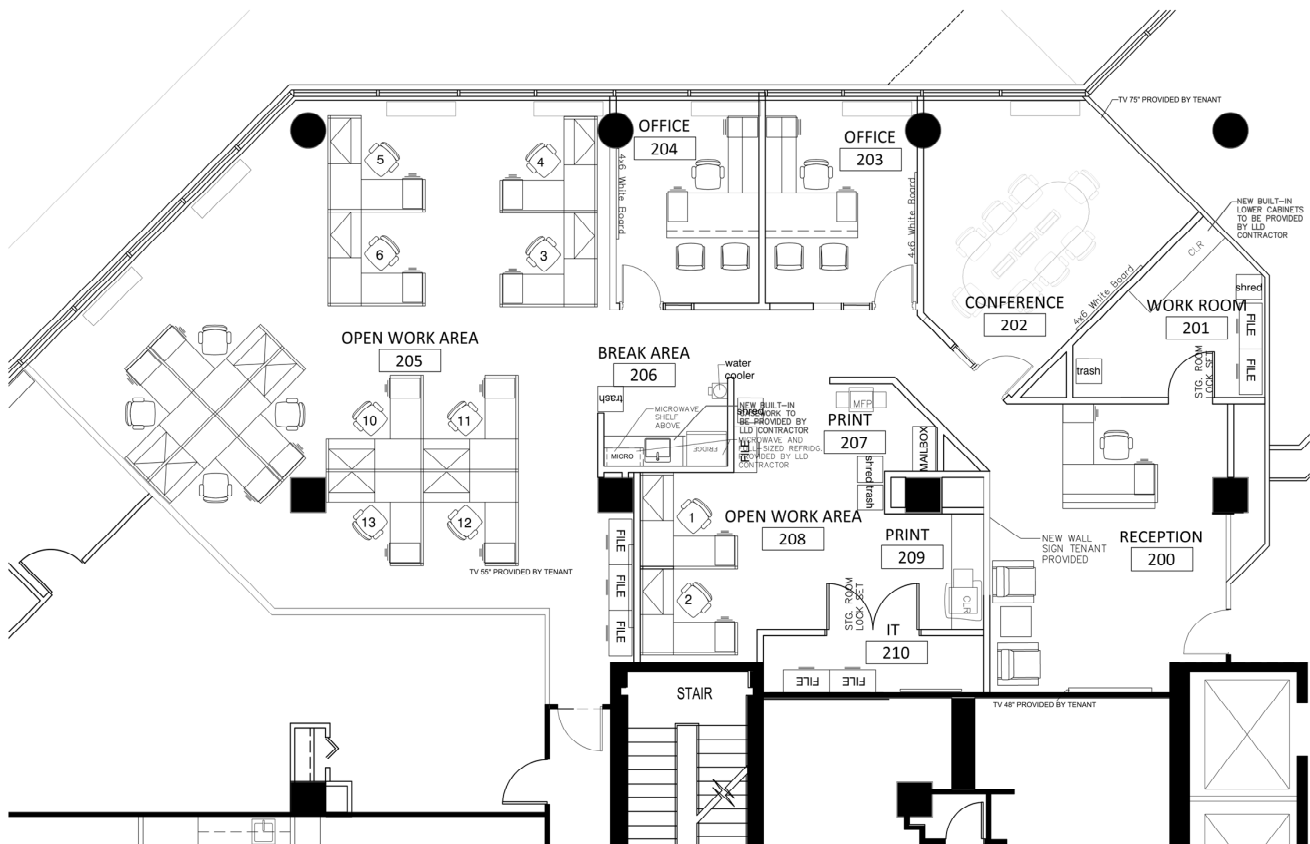
4041 POWDER MILL RD, CALVERTON, MD

FLOOR PLANS

SECOND FLOOR

2,997 RSF

\$22.00 PSF, FS



CENTERPARK ONE

4041 POWDER MILL RD, CALVERTON, MD



LOCATION & AMENITIES

- 0.7 mile to I-95
- 2 miles to Adventist HealthCare Medical Center
- 3 miles to Route 29 and major retail amenities
- 3 miles to I-495
- 3.3 miles to I-CC (Route 200)

OWNED BY:

KINGDOM
FELLOWSHIP
A M E C H U R C H

LEASING CONTACTS:

Aaron Gambini
agambini@scheerpartners.com
703.472.3737

Dave Edgerley
dedgerley@scheerpartners.com
301.943.9762

15245 Shady Grove Rd, Suite 210N
Rockville, MD 20850

301.337.4700

www.scheerpartners.com

Scheer Partners
A Reputation for Results