



FOR LEASE
**BAYMEADOWS
SQUARE**

4221 & 4241 BAYMEADOWS ROAD
JACKSONVILLE, FLORIDA 32217



FOR LEASE

BAYMEADOWS SQUARE

4221 & 4241 BAYMEADOWS ROAD • JACKSONVILLE, FLORIDA 32217

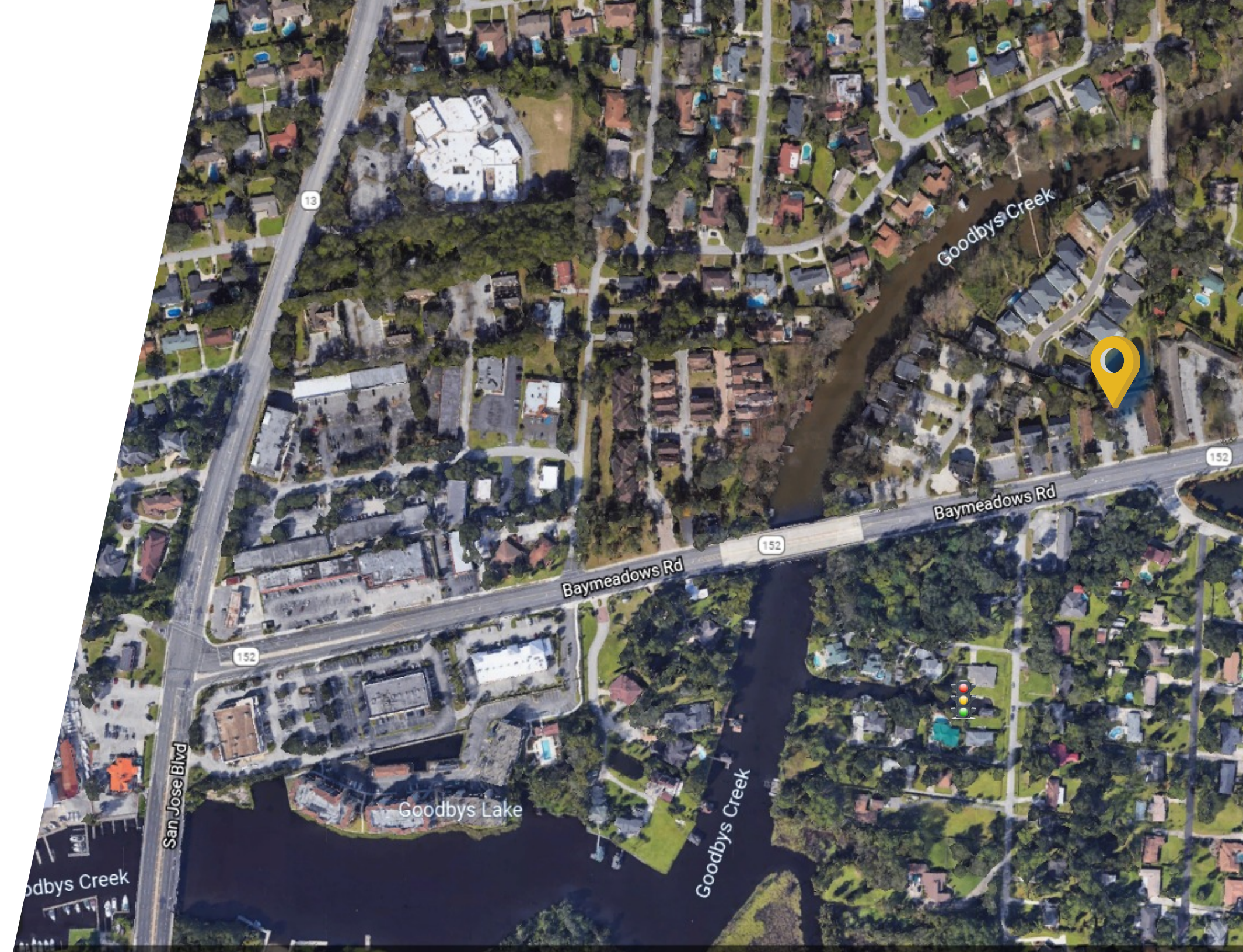


BUILDING AMENITIES

- Excellent visibility on Baymeadows Road
- Ample parking for staff, clients and customers
- Quiet, park-like setting
- Turn-key or custom built plans available

PROPERTY HIGHLIGHTS

- Prime Commercial area near Mandarin and San Marco
- Property management staff nearby





BAYMEADOWS SQUARE

BUILDING FEATURES

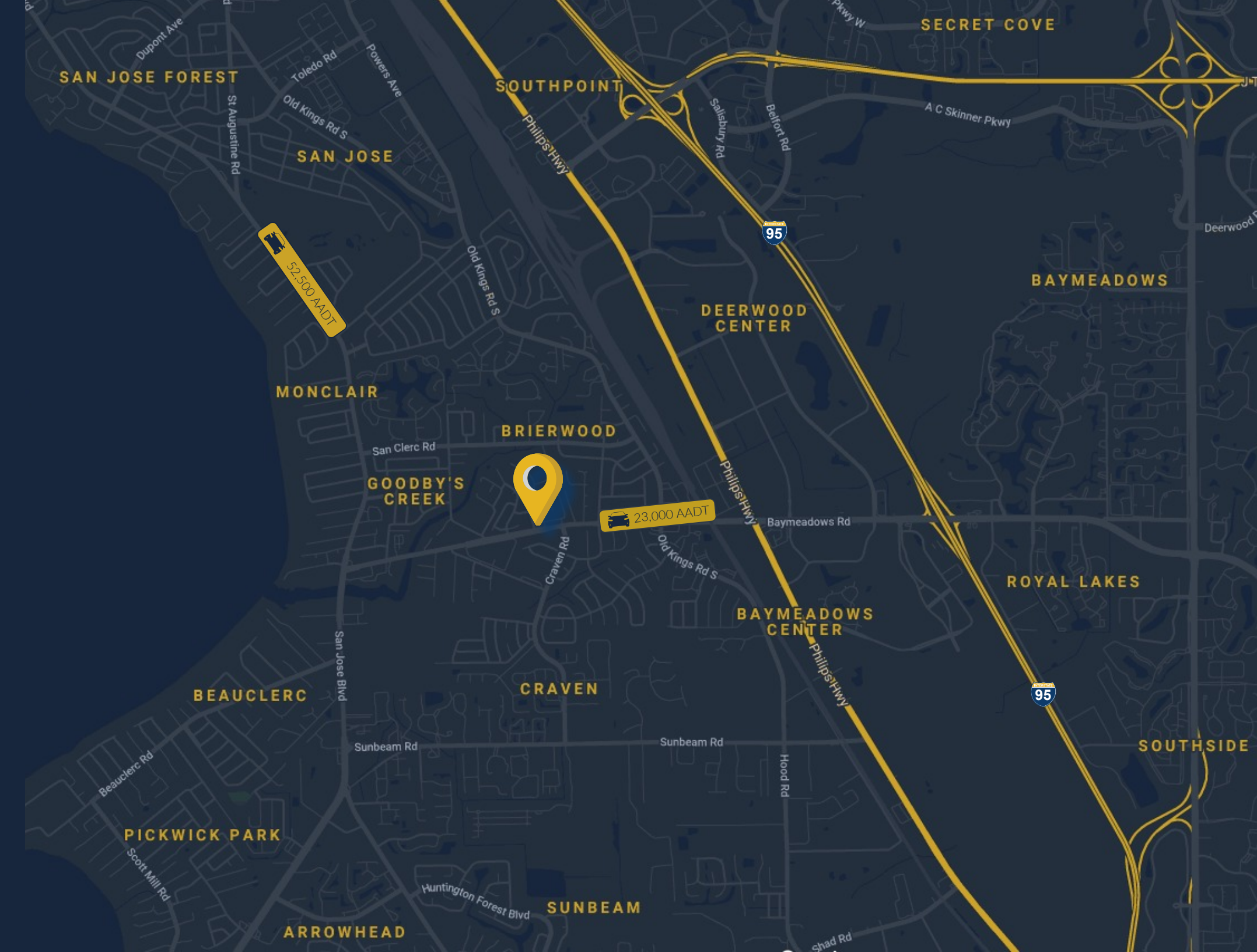
TOTAL SQ. FT. 26,521 SF

TOTAL AVAILABLE ± 650 - 1,950 SF

LEASE RATE Negotiable

ZONING CO

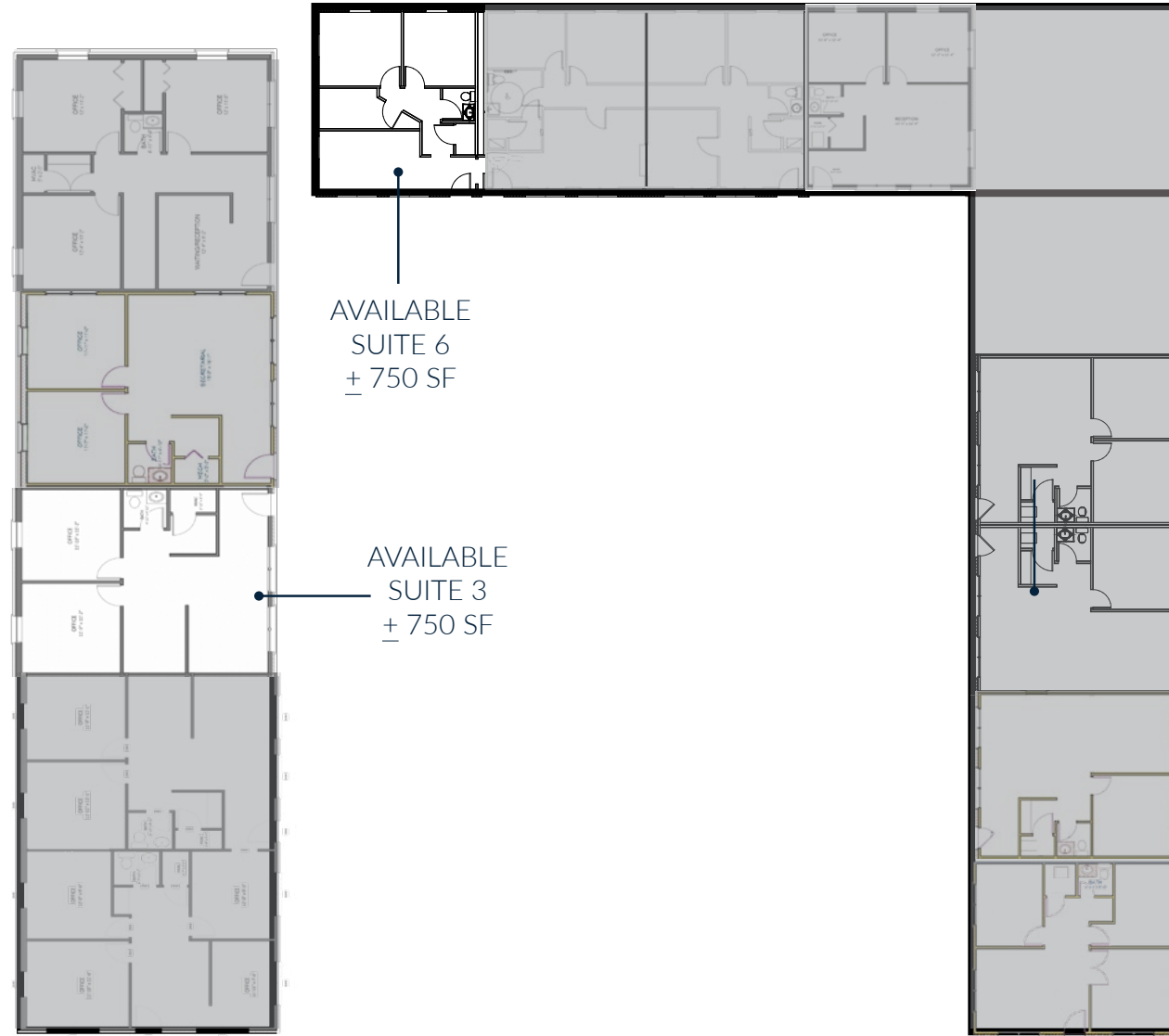
DEMOGRAPHICS	1 MILE	3 MILES	5 MILES
POPULATION	11,680	61,679	158,597
HOUSEHOLDS	5,169	27,387	67,297
MEDIAN HH INCOME	\$52,676	\$51,896	\$56,776
AVERAGE HH INCOME	\$69,701	\$72,114	\$77,397



FOR LEASE

BAYMEADOWS PROFESSIONAL CENTER

4221 BAYMEADOWS ROAD • JACKSONVILLE, FLORIDA 32217



AVAILABLE
SUITE 6
± 750 SF

AVAILABLE
SUITE 3
± 750 SF

Baymeadows Road

FOR LEASE

BAYMEADOWS PROFESSIONAL CENTER

4241 BAYMEADOWS ROAD • JACKSONVILLE, FLORIDA 32217



SUITES 7,8,9
AVAILABLE
± 650 SF EACH

SUITE 10
AVAILABLE
± 750



John Hodges, Director of Real Estate Services

leasing@imc-jax.com

7915 Baymeadows Way
Suite 400
Jacksonville, FL 32256

T: 904.737.8846

www.imc-jax.com

