

ICONIC COMMERCIAL PROPERTY

**208 ST MARYS ST**

Raleigh, NC 27605



**WYATT MATTINGLY**  
Broker  
919.810.7430  
wyatt@aspirenc.co

**JAMIE DAWSON**  
Broker/Builder/Accredited Land Consultant  
919.795.8776  
jamie@aspirenc.com



# PROPERTY SUMMARY

## PROPERTY DESCRIPTION

Renovated historic church offering a rare mixed-use opportunity for assembly, office, retail, and partial residential applications. Ideal uses include event venues, wellness centers, nonprofits, boutique offices, experiential retail, or owner-user concepts seeking a memorable and highly functional property. This architecturally distinctive landmark features strong curb appeal, preserved historic aesthetics, flexible interior space across two stories plus basement, and welcoming usable outdoor area.

Saint Mary's High School and Wiley Magnet Elementary School are directly across the street, including surrounding commercial & residential properties. It is within short walking distance of the Glenwood South District which showcases a diverse variety of restaurants and retail options, as well as local favorites such as Raleigh Beer Garden, Taverna Agora, 42nd Street Oyster Bar, and much more. Just a 5-minute walk from downtown Raleigh and only minutes from NC State University, this property is nicely positioned for easy access to many of the area's amenities.

Significant renovations just completed, the property features a stunning 1,300 sf great room, 9 Additional Offices and a Large Finished Basement. This freshly updated historic gem features plenty of free street parking in the neighborhood.

## HIGHLIGHTS

- o ± 6,200 SF
- o 0.28 Acre Site
- o OX-3-DE Zoning
- o \$2,750,000 Sale Price
- o Ample free street parking
- o Modern finishes with historic feel
- o Uniquely divided spaces for multiple uses

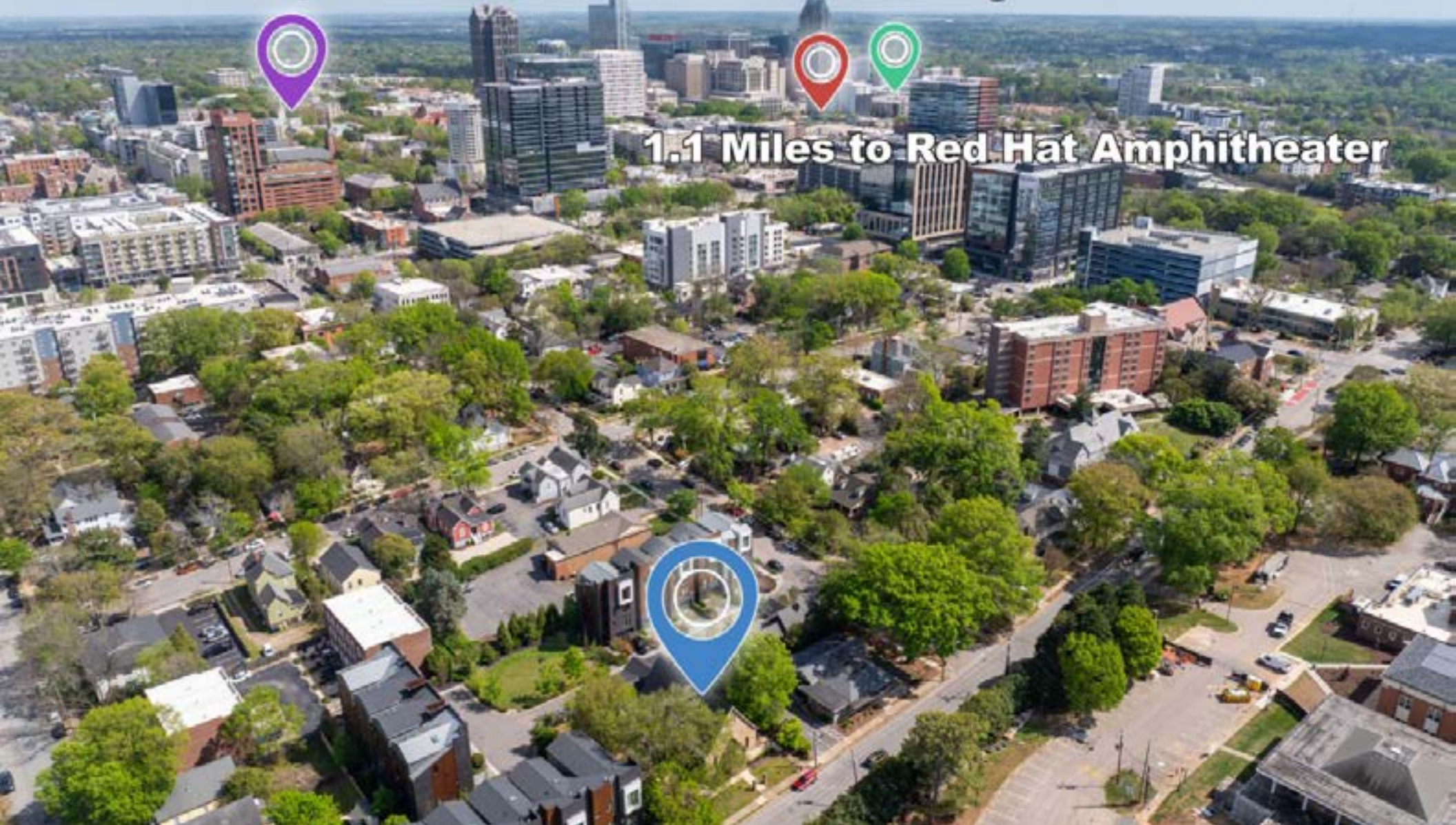


# AREA OVERVIEW

**1 Mile to Fayetteville St**

**1.2 Miles to Raleigh Convention Center**

**1.1 Miles to Red Hat Amphitheater**



ICONIC COMMERCIAL PROPERTY FOR SALE OR LEASE | 208 ST MARYS ST | RALEIGH, NC 27605

# AREA OVERVIEW



ICONIC COMMERCIAL PROPERTY FOR SALE OR LEASE | 208 ST MARYS ST | RALEIGH, NC 27605

# DEMOGRAPHICS

18,353

Population



10,074

Households



31.7

Median Age

\$73,573

Median Disposable Income



\$92,495

Median Household Income



\$69,665

Per Capita Income



\$54,031

Median Net Worth

4.0%

No High School Diploma



10.4%

High School Graduate



16.6%

Some College/  
Associate's Degree



69.0%

Bachelor's/Grad/Prof Degree



White Collar

86.9%



Blue Collar

5.2%

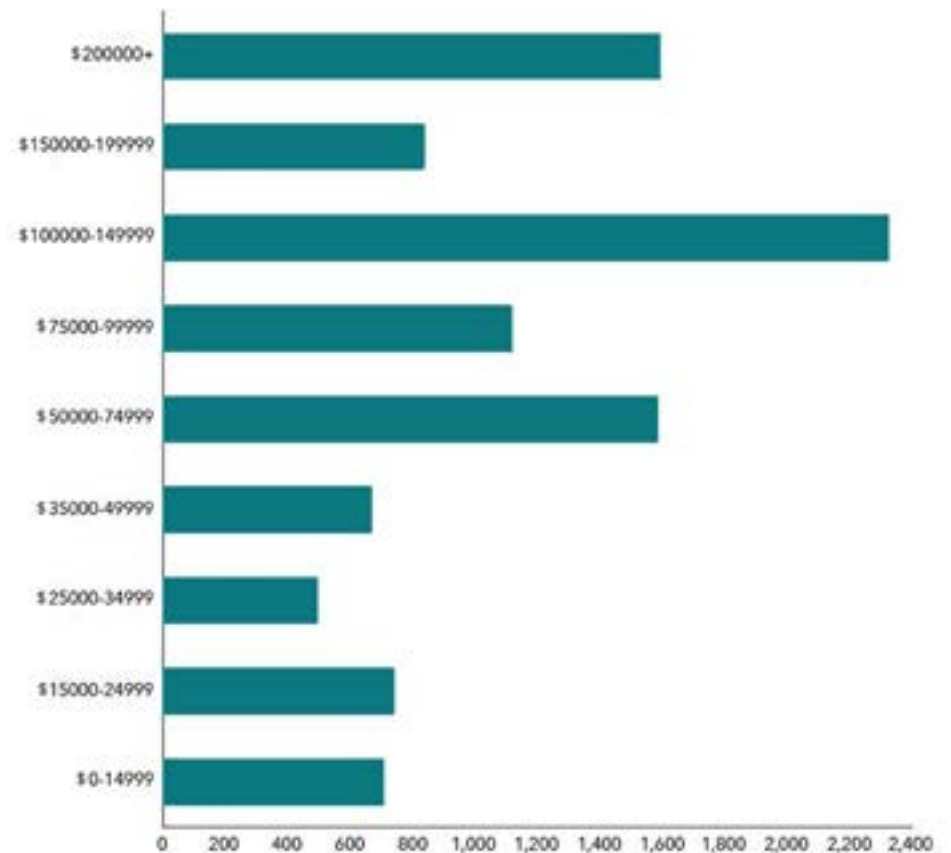


Services

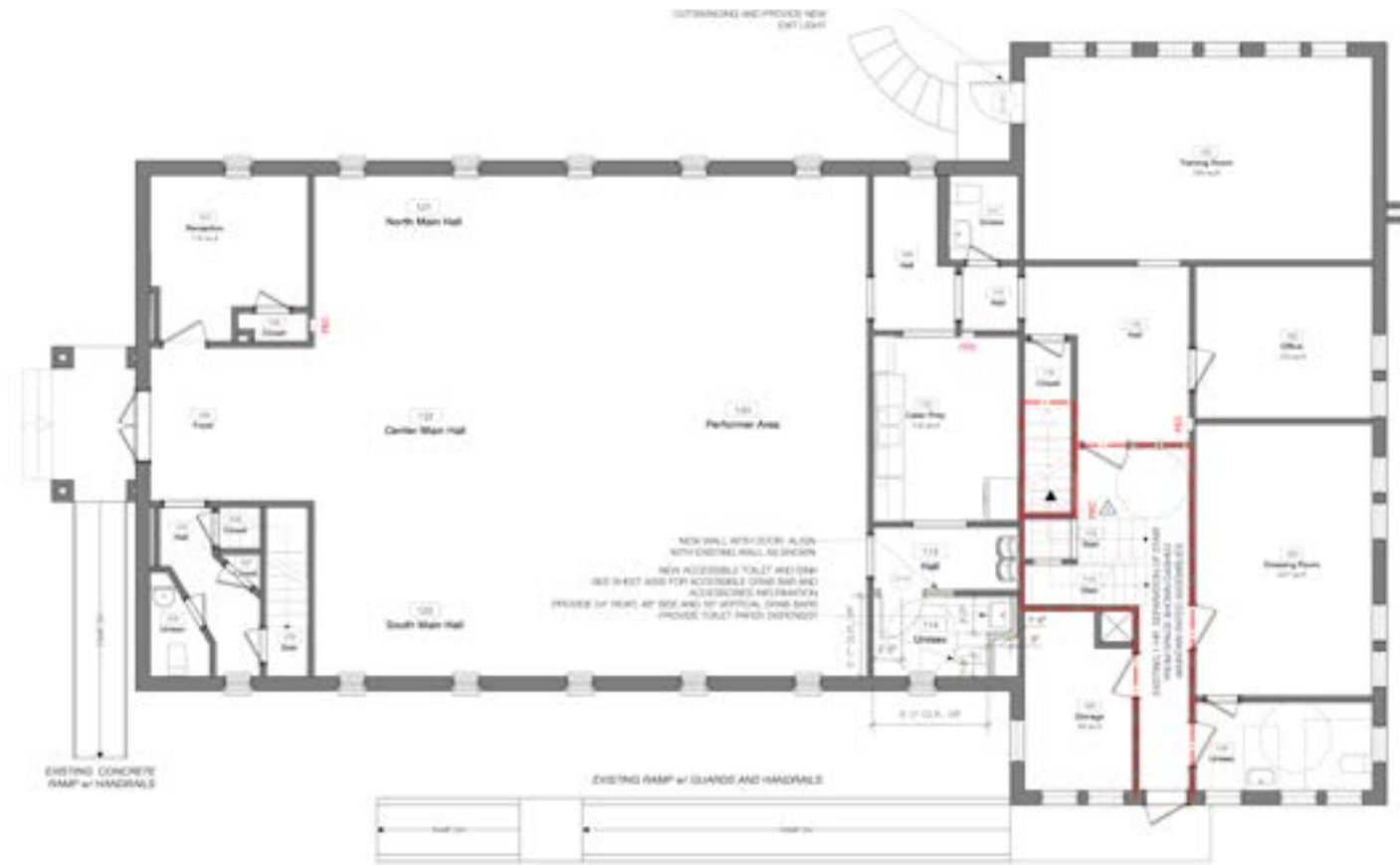
9.6%



3.1%  
Unemployment Rate



# FLOOR PLANS: BASEMENT & FIRST FLOOR



FIRST FLOOR PLAN



BASEMENT PLAN



# INTERIOR: FIRST FLOOR



# INTERIOR: SECOND FLOOR



# INTERIOR: BATHROOMS



# EXTERIOR



ICONIC COMMERCIAL PROPERTY FOR SALE OR LEASE | 208 ST MARYS ST | RALEIGH, NC 27605

## FOR SALE OR LEASING INQUIRIES, CONTACT:

**JAMIE DAWSON**

*Broker/Builder/Accredited Land Consultant*

919.795.8776

[jamie@aspirenc.com](mailto:jamie@aspirenc.com)

**WYATT MATTINGLY**

*Broker*

919.810.7430

[wyatt@aspirenc.com](mailto:wyatt@aspirenc.com)



# Aspire

RE+DEV™