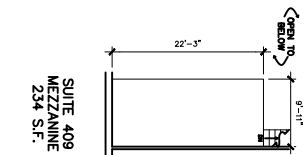
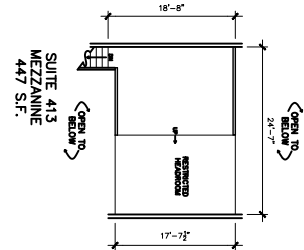
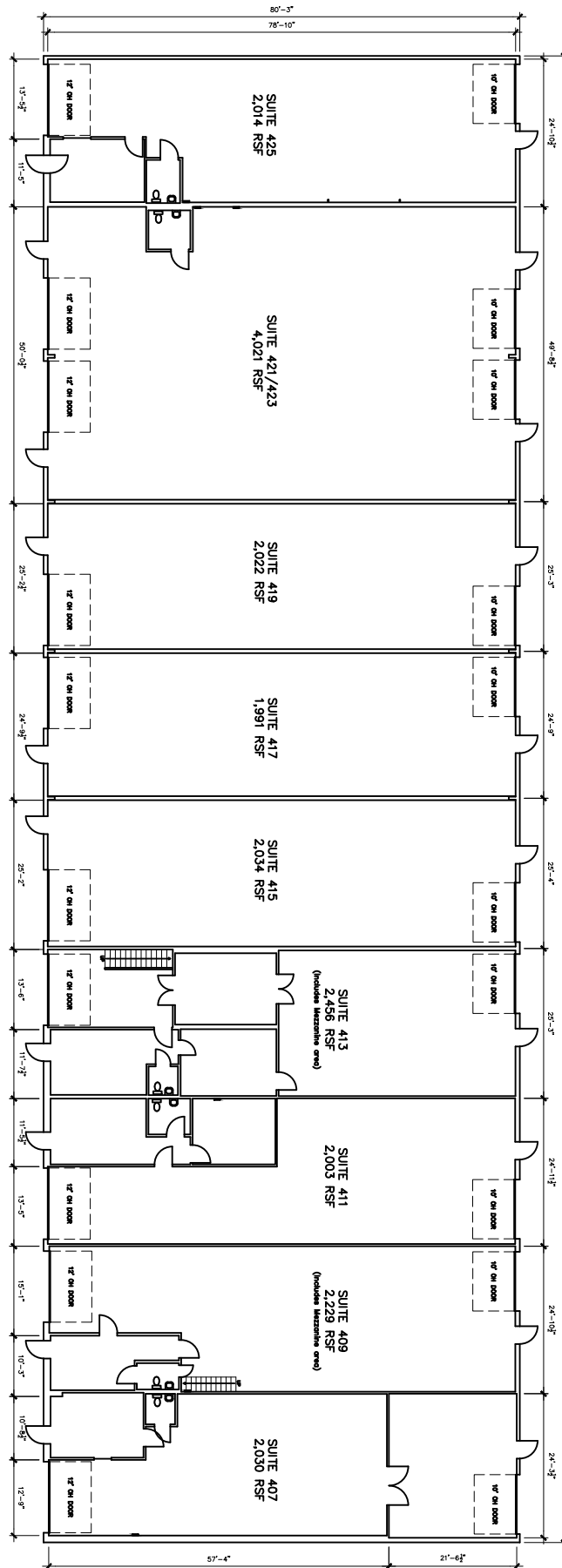


NOTE:

DIMENSIONS ARE TO SHOW ROOM SIZES. SQUARE FOOTAGE CALCULATIONS ARE DONE TO BOMA STANDARDS.



NOT TO SCALE

Drawing for:
AVISON YOUNG
515 Congress Ave., Ste.1175
Austin, Texas 78701

405 TILLERY ST.
Austin, TX 78702
TOTAL RENTABLE AREA: 20,800 S.F.

THE MEASUREMENTS, FLOOR PLANS, AND CALCULATIONS ARE ACCURATE USING BOMA MEASUREMENT STANDARDS FOR INDUSTRIAL BUILDINGS. ANSI/BOMA Z65.2 - 2019
Project No.: 2434.03
Rev. Date: March 11, 2026
©2026

DIMENSIONS
FLOOR PLANS
Austin, Texas
dimensionsfloorplans.com
Phone: (512)342-0114