

FOR SALE

NORTH CENTRAL GARAGE CLUB

*Luxury Garage Ownership in the
Heart of Phoenix*

1620 W HATCHER ROAD | PHOENIX, ARIZONA



KIDDER.COM

km Kidder
Mathews

NORTH CENTRAL GARAGE CLUB



PROPERTY OVERVIEW

11 units total - 1 available

Unit 5 ±1,044 SF

40' deep units

18' X 14' and 14' X 14' oversized garage doors with powered remote entry

16' clear height

Separately metered units with 125 amp panel

55' drive aisle for easy maneuvering

Private facility with 24/7 controlled access and protective covenants

RV sewer and water hook-ups

Masonry construction with insulated ceilings

Pre-plumbed for restrooms

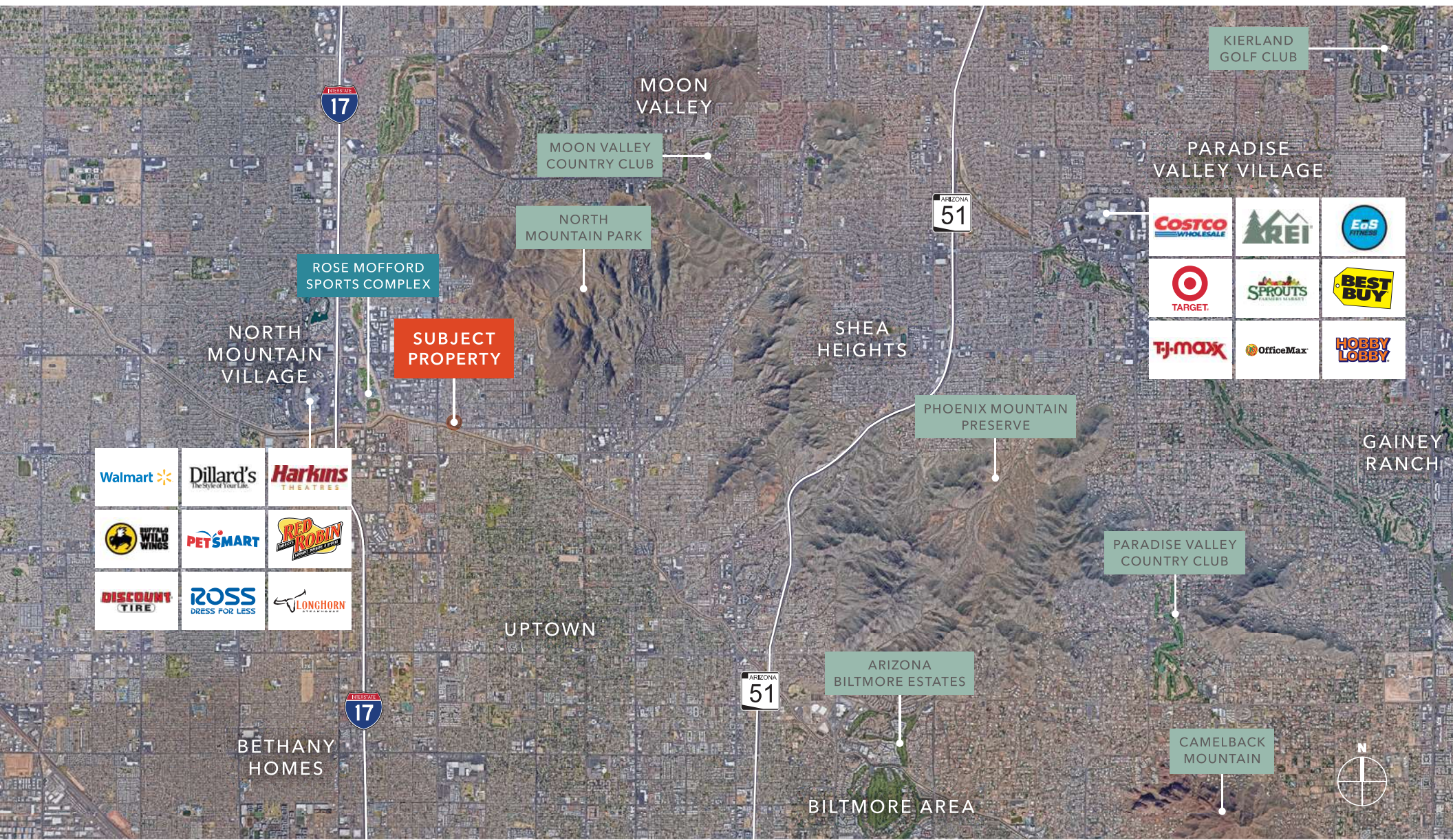
AC ready

WiFi throughout



NORTH CENTRAL GARAGE CLUB





NORTH CENTRAL GARAGE CLUB

STORAGE U
FOR SALE
602-380-19

Exclusively listed by

ERIC BELL, SIOR
Owner & Agent
602.513.5151 | eric.bell@kidder.com

KIDDER.COM

This information supplied herein is from sources we deem reliable. It is provided without any representation, warranty, or guarantee, expressed or implied as to its accuracy. Prospective Buyer or Tenant should conduct an independent investigation and verification of all matters deemed to be material, including, but not limited to, statements of income and expenses. Consult your attorney, accountant, or other professional advisor. All Kidder Mathews designs are the sole property of Kidder Mathews. Branded materials and layouts are not authorized for use by any other firm or person.

