

# 993 LAUREL

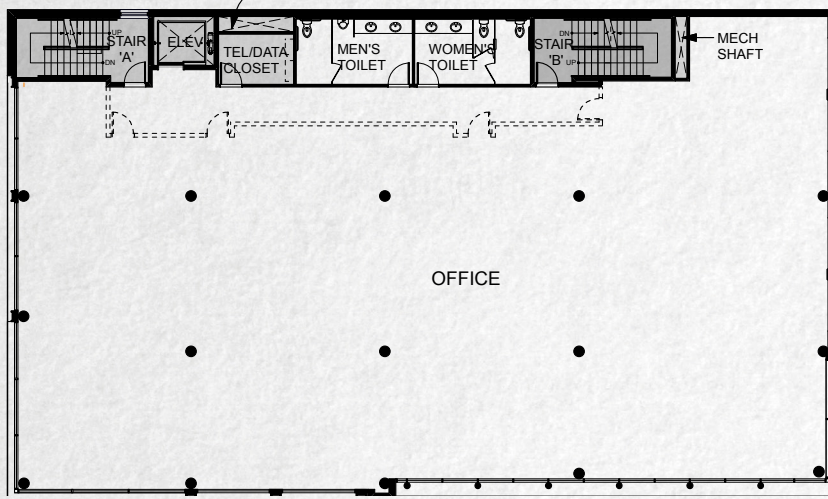
993 LAUREL STREET OFFERS ALL  
THE BENEFITS OF BEING DOWNTOWN  
– amenities, public transit, and onsite  
parking



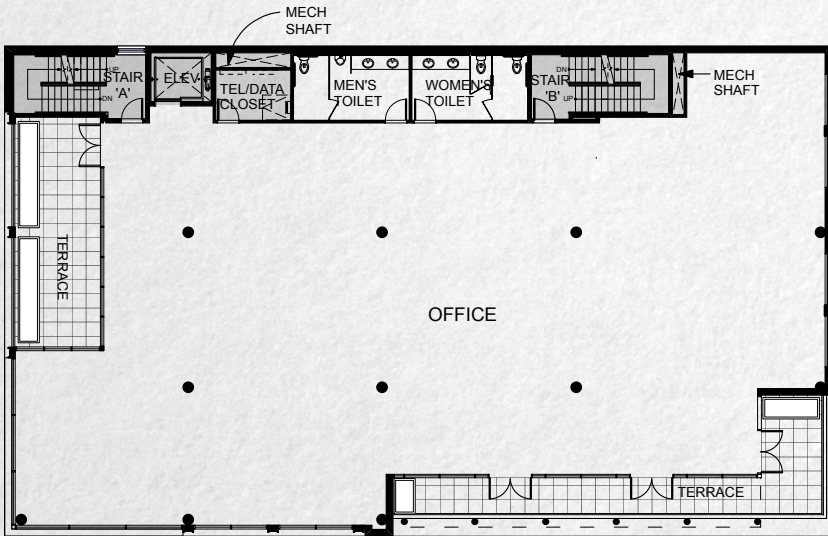
J M S

CBRE

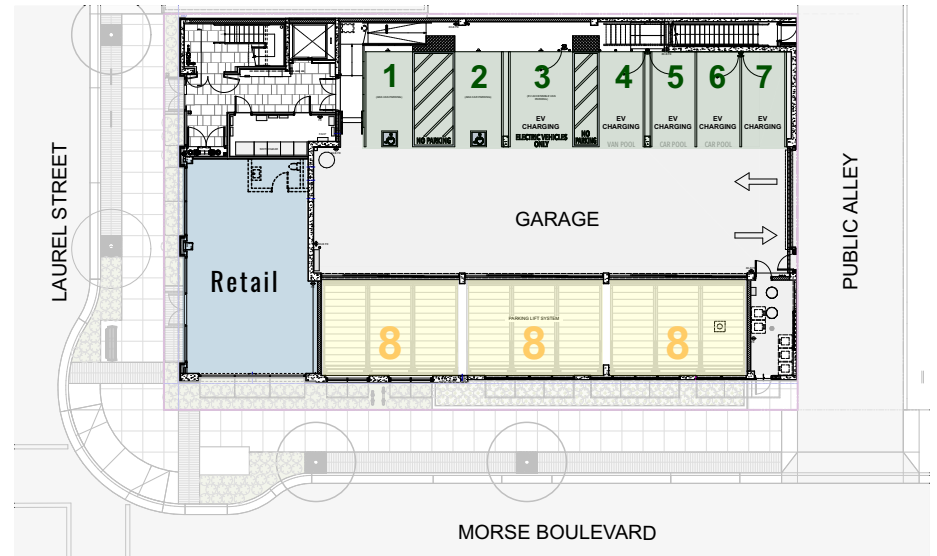
## 2nd Floor | Office ±8,086 RSF



## 3rd Floor | Office ±8,523 RSF



## 1st Floor | Retail ±1,238 RSF

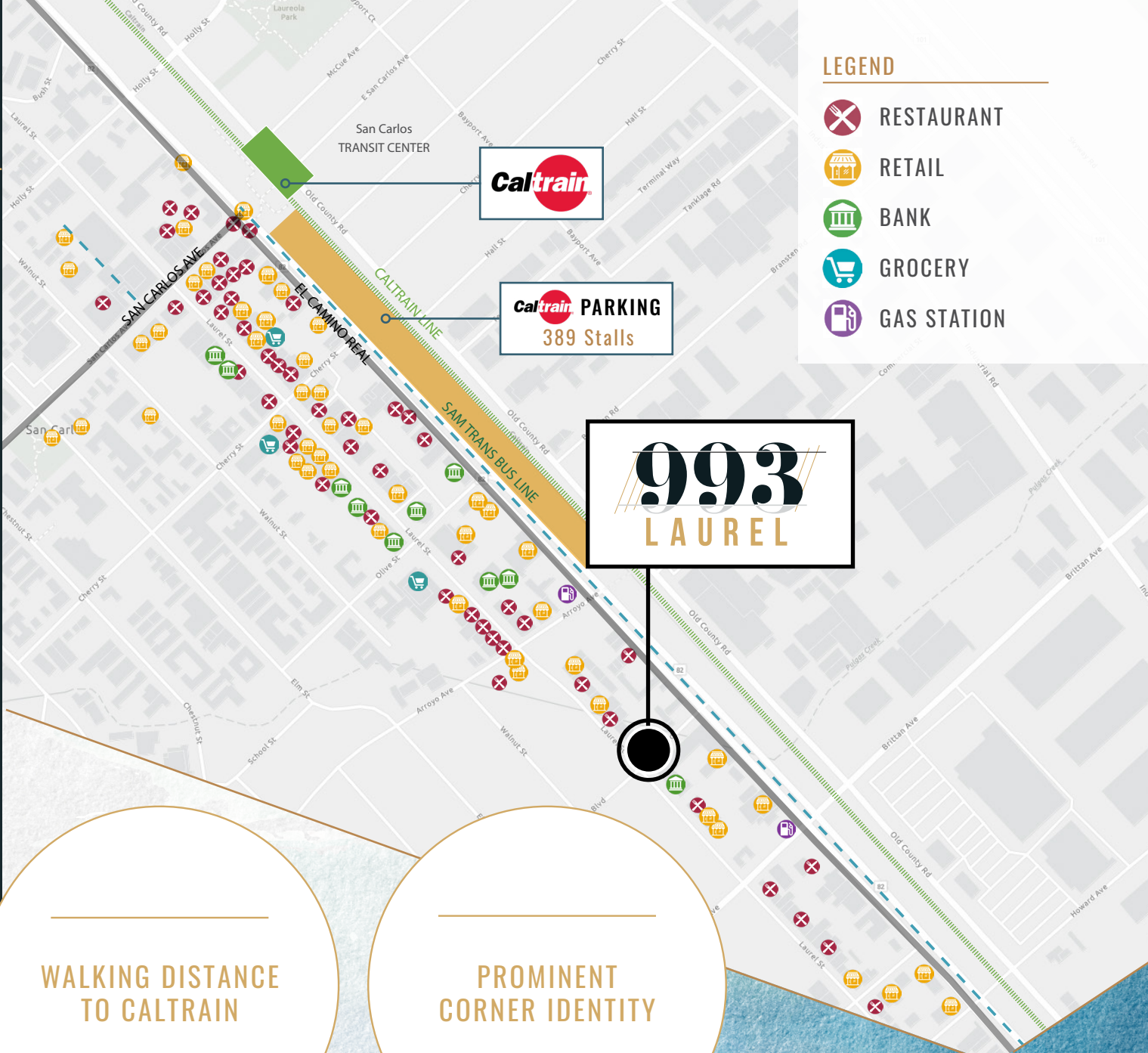


$$\begin{array}{r}
 24 \\
 \text{PARKING SPACES IN} \\
 \text{PARKING LIFT SYSTEM}
 \end{array}
 +
 \begin{array}{r}
 5 \\
 \text{PARKING WITH} \\
 \text{EV CHARGING}
 \end{array}
 +
 \begin{array}{r}
 2 \\
 \text{ADA DESIGNATED} \\
 \text{PARKING SPOTS}
 \end{array}
 =
 \begin{array}{r}
 31 \\
 \text{TOTAL PARKING}
 \end{array}$$


# San Carlos Amenities

## WITHIN WALKING DISTANCE

- |                             |                         |
|-----------------------------|-------------------------|
| Agora Greek & Mediterranean | Peet's Coffee           |
| Bank of America             | Red Hot Chili Pepper    |
| Blue Line Pizza             | Rustic House Oyster Bar |
| Bow Wow Meow                | San Carlos Bar & Grill  |
| Broiler Express             | Shell                   |
| Chase                       | Shiki Bistro            |
| Chevron                     | Starbucks               |
| CitiBank                    | The Floor Store         |
| CoAmerica                   | The Refuge              |
| CVS                         | The Reading Bug         |
| Diddam's                    | The UPS Store           |
| Footwear                    | Union Bank              |
| Hallmark                    | US Postal Service       |
| Invisilgn Dentist           | Town                    |
| Johnston's Saltbox          | Trader Joe's            |
| Laurel Street Arts          | Tutti Frutti Yogurt     |
| Nothing Bundt Cakes         | Well Fargo              |



### LEGEND

-  RESTAURANT
-  RETAIL
-  BANK
-  GROCERY
-  GAS STATION

EXCEPTIONAL AMENITIES

WALKING DISTANCE TO CALTRAIN

PROMINENT CORNER IDENTITY

# 993 LAUREL



## FOR OFFICE INFORMATION

**ALEX WILSON**

Lic. 01771333

+1 650 577 2923

[alex.wilson@cbre.com](mailto:alex.wilson@cbre.com)

**SIMON CLARK**

Lic. 01318652

+1 650 577 2938

[simon.clark@cbre.com](mailto:simon.clark@cbre.com)

## FOR RETAIL INFORMATION

**KATIE SINGER**

Lic. 01745709

+1 650 494 5135

[katie.singer@cbre.com](mailto:katie.singer@cbre.com)



**CBRE**