

Medical Office | For Lease

CBRE

# Missouri City Medical Center

State Hwy 6 and Sienna Ranch Rd | Missouri City, TX 77459

Up to 16,000 SF Available For Lease - Under Construction - Delivers Summer 2025



## MISSOURI CITY MEDICAL CENTER

State Hwy 6 and Sienna Ranch Rd | Missouri City, TX 77459



# Highlights

- Missouri City Medical Center is located off of Hwy 6 and Sienna Ranch Rd in Missouri City, Texas
- High visibility and easy access
- Serves a strong and growing demographic
- 32,000 SF RBA
- 16,000 SF (full floor) available on the second floor in shell condition
- Construction is underway
- Scheduled core and shell delivery: Summer 2025
- Ample surface parking at 5 per 1,000 SF

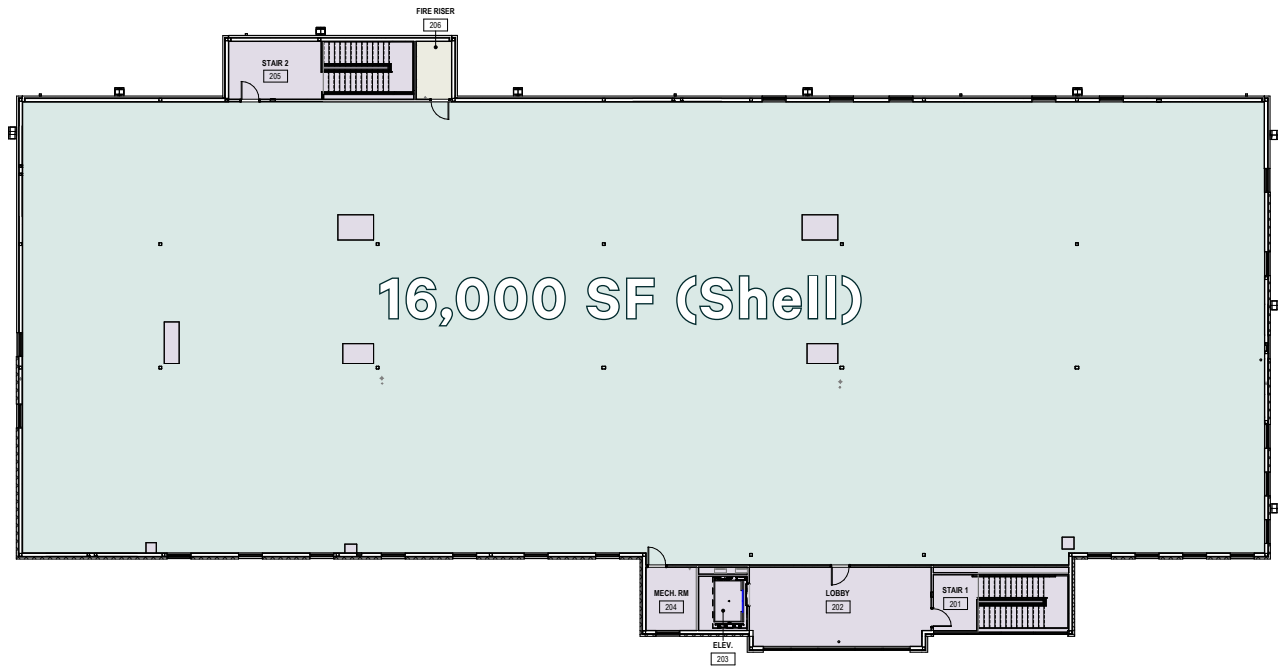
2  
Stories

32K  
SF Medical Office

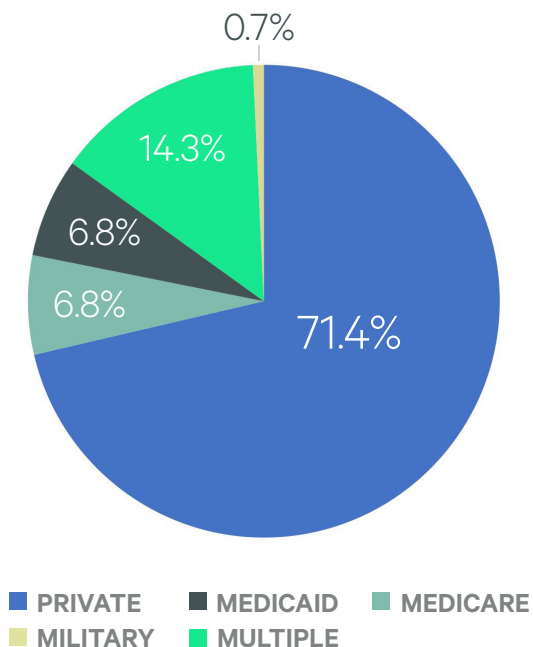
16K  
SF Second Floor Availability

# Availability

2nd Floor - 16,000 SF (Full Floor)



## INSURANCE MIX - 5 MILES



## DEMOGRAPHICS - 5 MILES



196,209



\$643.9M



\$151,131

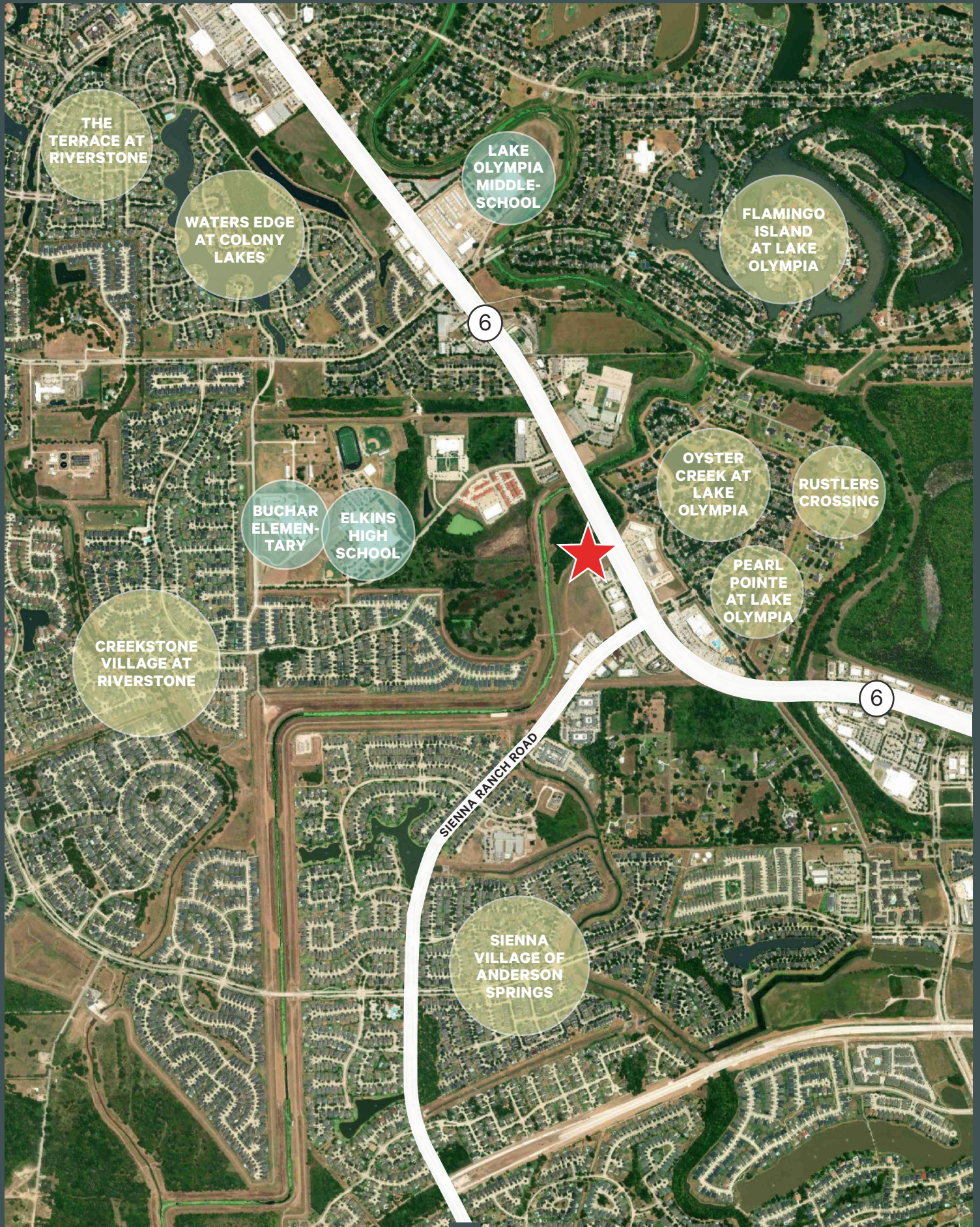


\$361,975

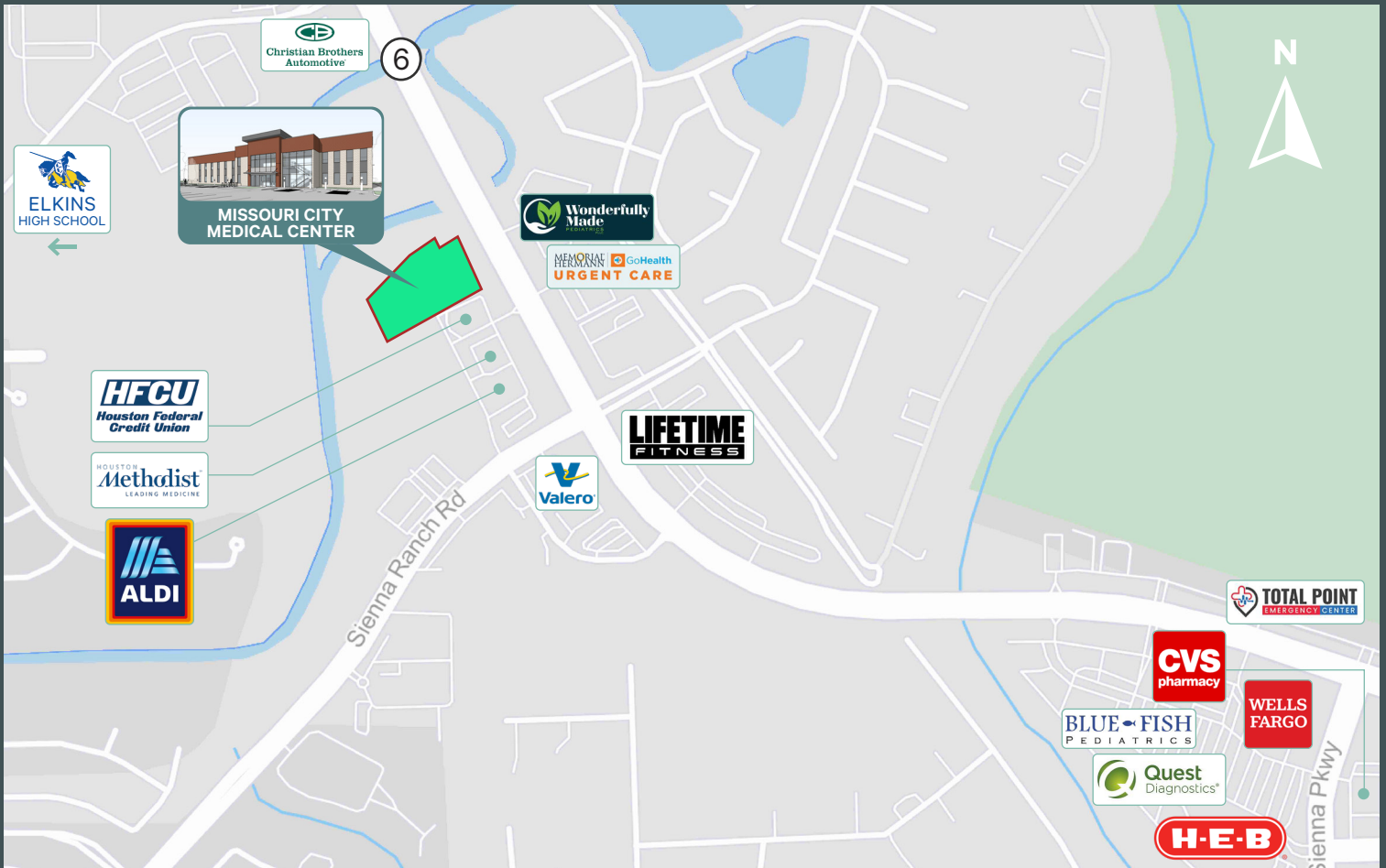


# MISSOURI CITY MEDICAL CENTER

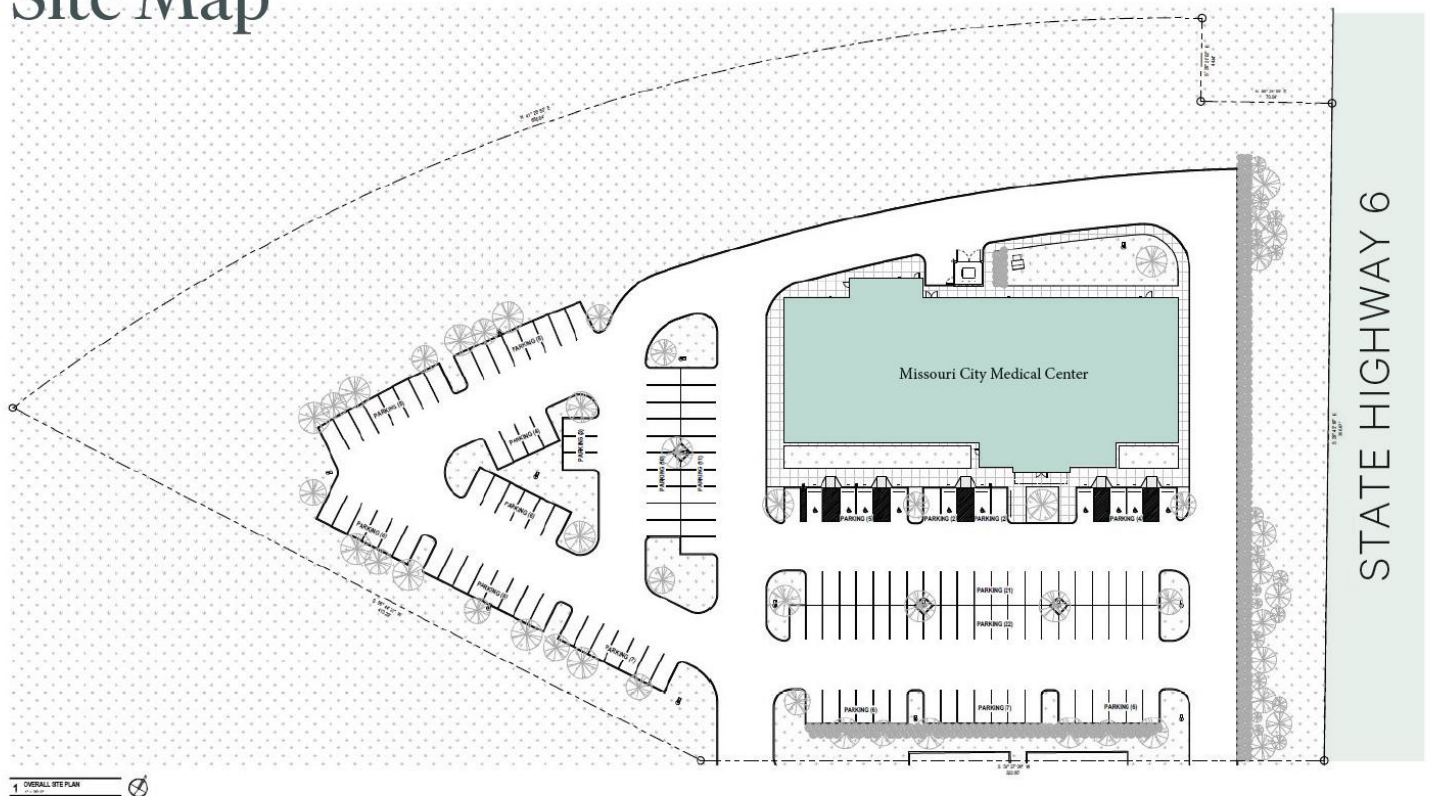
State Hwy 6 and Sienna Ranch Rd | Missouri City, TX 77459







## Site Map





# MISSOURI CITY MEDICAL CENTER

State Hwy 6 and Sienna Ranch Rd | Missouri City, TX 77459

For Lease



Construction Progress



## Contact Us

**Lane Kane**

Senior Associate

+1 904 305 7633

lane.kane@cbre.com

**Angela Barber**

Vice President

+1 832 455 6945

angela.barber@cbre.com

© 2024 CBRE, Inc. All rights reserved. This information has been obtained from sources believed reliable, but has not been verified for accuracy or completeness. You should conduct a careful, independent investigation of the property and verify all information. Any reliance on this information is solely at your own risk. CBRE and the CBRE logo are service marks of CBRE, Inc. All other marks displayed on this document are the property of their respective owners, and the use of such logos does not imply any affiliation with or endorsement of CBRE. Photos herein are the property of their respective owners. Use of these images without the express written consent of the owner is prohibited.

[www.cbre.com/properties](http://www.cbre.com/properties)

**CBRE**