

naislect.com

CLOUD GATE
INDUSTRIAL PARK
FOR LEASE

503 Millennium Park Ln.
Caldwell, ID 83605

NAISelect



PROPERTY INFORMATION

| | |
|--------------------------|---|
| PROPERTY TYPE | Industrial Flex Warehouse |
| ADDRESS | 503 Millennium Park Ln. Caldwell, ID 83605 |
| LEASE RATE / TYPE | \$0.99 SF/month (NNN) |
| AVAILABLE SPACE | ±7,183 SF - ±14,366 SF |
| LEASE TERM | Negotiable |

HIGHLIGHTS

- New Construction - Available Immediately
- (4) 14'x14' Roll Up Doors
- Clear Height: 22'-24'
- Finished Office: ±2,200 SF
- Warehouse: ±12,166 SF
- Mezzanine/Storage: ±2,200 SF
- Power: 3 Phase
- Ample ground level parking
- Conveniently located approximately 2 miles from I-84, Highway 20/26, Highway 19, and the Union Pacific Railroad in Cloud Gate Industrial Park

This information was obtained from sources believed reliable but cannot be guaranteed and is subject to change at any time. Any opinions or estimates are used for example only.

208.229.6015 | mike@naiselect.com
MIKE ERKMANN, CCIM

208.229.6002 | ben@naiselect.com
BEN KNEADLER, CCIM

NAI SELECT | 5571 N. GLENWOOD ST., BOISE, ID 83714 | 208.229.2020

NAISelect



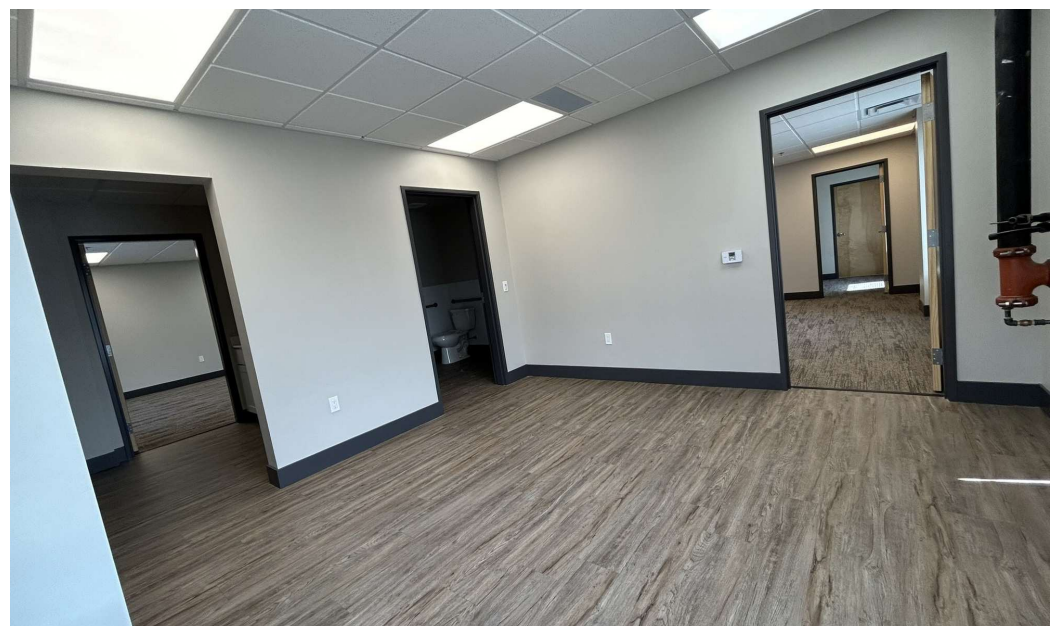
208.229.6015 | mike@naiselect.com
MIKE ERKMANN, CCIM

208.229.6002 | ben@naiselect.com
BEN KNEADLER, CCIM

Industrial Warehouse For Sublease

CALDWELL, ID

Finished Office Space - ±2,200 SF



208.229.6015 | mike@naiselect.com
MIKE ERKMANN, CCIM

208.229.6002 | ben@naiselect.com
BEN KNEADLER, CCIM

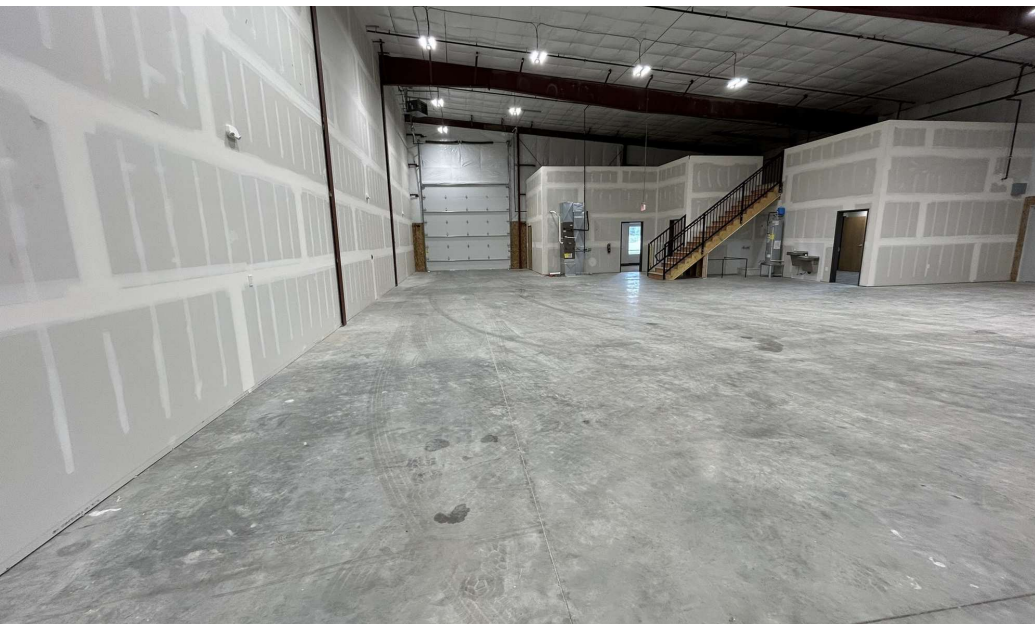
NAI SELECT | 5571 N. GLENWOOD ST., BOISE, ID 83714 | 208.229.2020

NAISelect

Industrial Warehouse For Sublease

CALDWELL, ID

Mezzanine/Warehouse - ±12,166 SF

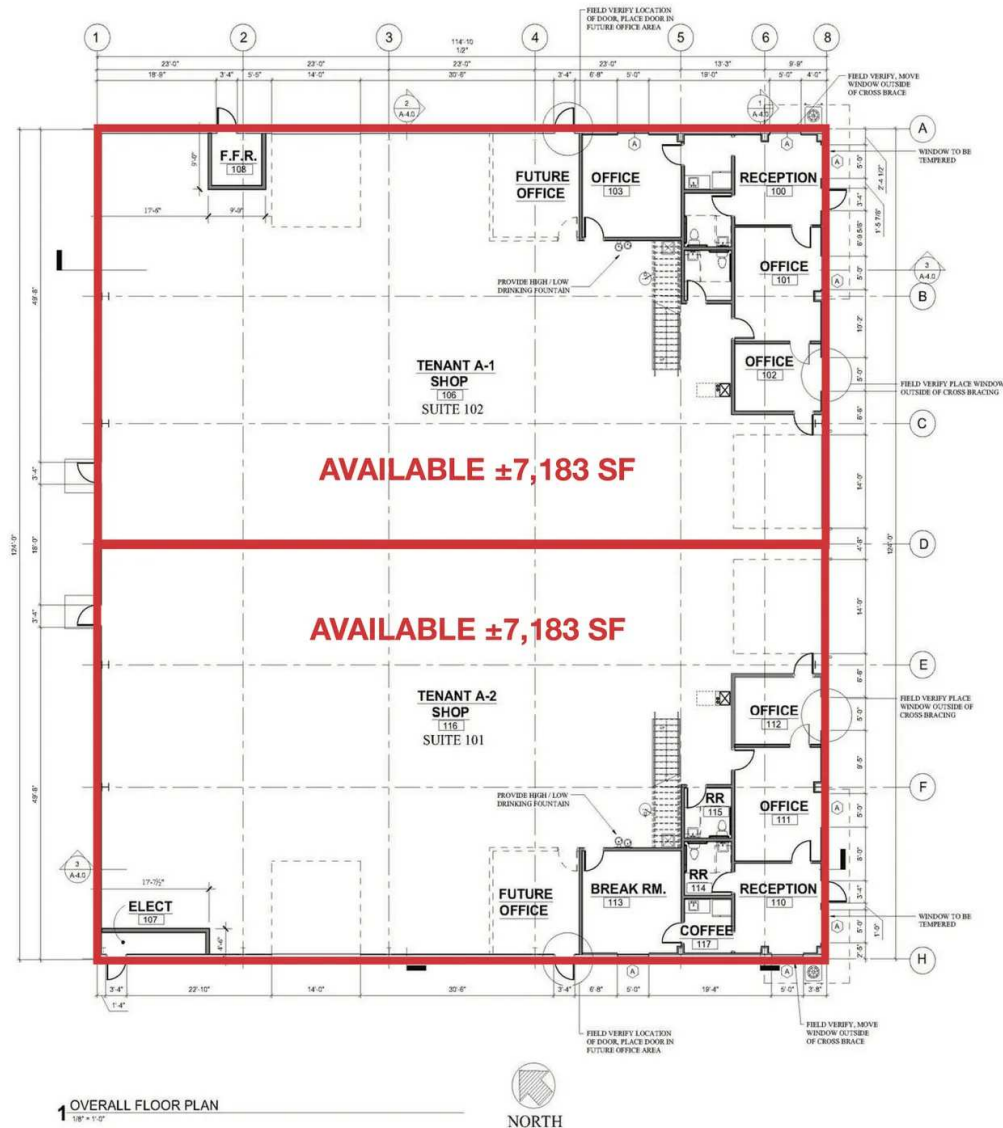


208.229.6015 | mike@naiselect.com
MIKE ERKMANN, CCIM

208.229.6002 | ben@naiselect.com
BEN KNEADLER, CCIM

NAI SELECT | 5571 N. GLENWOOD ST., BOISE, ID 83714 | 208.229.2020

NAISelect





208.229.6015 | mike@naiselect.com
MIKE ERKMANN, CCIM

208.229.6002 | ben@naiselect.com
BEN KNEADLER, CCIM

NAI SELECT | 5571 N. GLENWOOD ST., BOISE, ID 83714 | 208.229.2020

NAISelect

Industrial Warehouse For Sublease

CALDWELL, ID

Aerial



208.229.6015 | mike@naiselect.com
MIKE ERKMANN, CCIM

208.229.6002 | ben@naiselect.com
BEN KNEADLER, CCIM

NAI SELECT | 5571 N. GLENWOOD ST., BOISE, ID 83714 | 208.229.2020

NAISelect



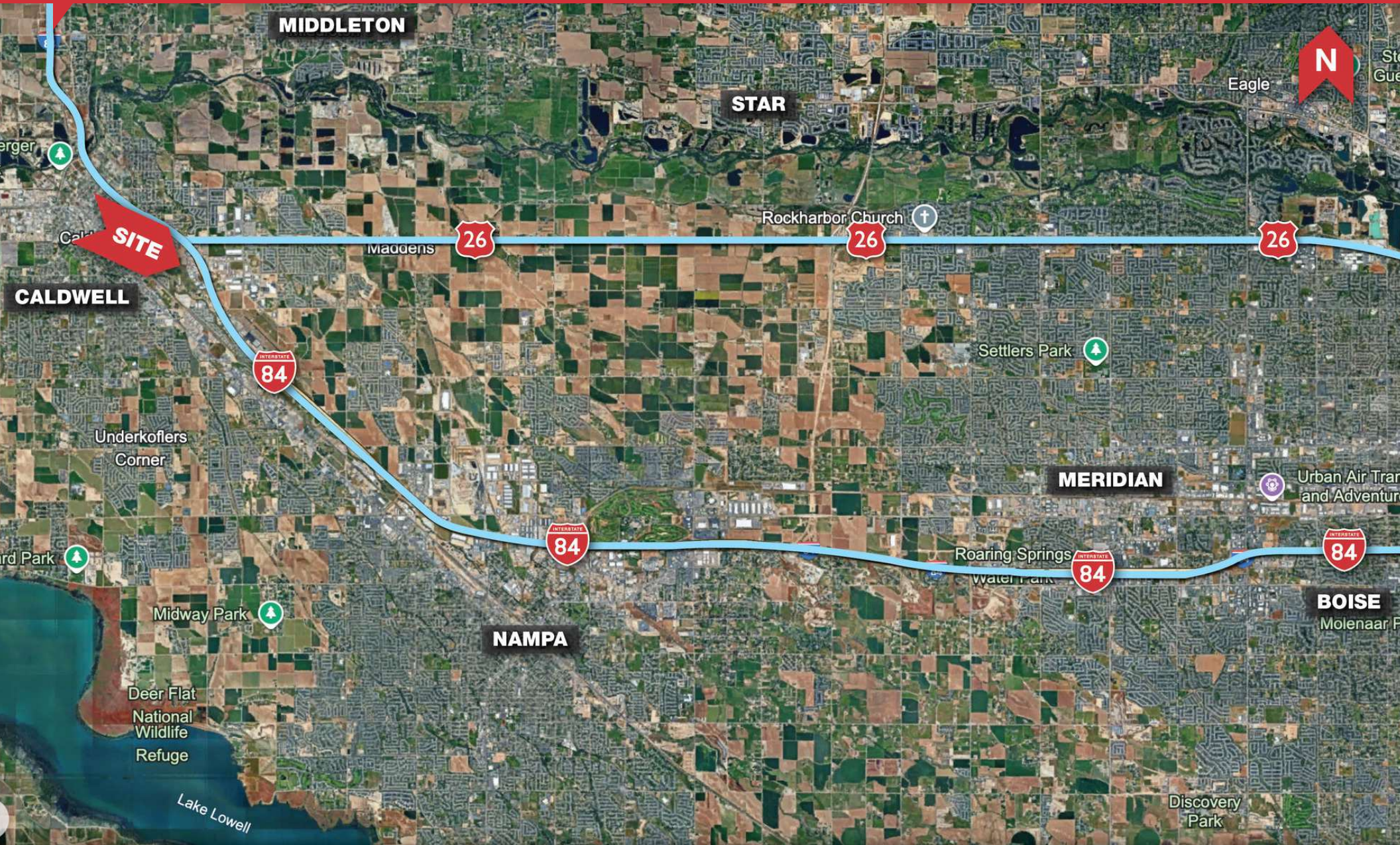
208.229.6015 | mike@naiselect.com
MIKE ERKMANN, CCIM

208.229.6002 | ben@naiselect.com
BEN KNEADLER, CCIM

Industrial Warehouse For Sublease

CALDWELL, ID

Treasure Valley Aerial



208.229.6015 | mike@naiselect.com
MIKE ERKMANN, CCIM

208.229.6002 | ben@naiselect.com
BEN KNEADLER, CCIM

NAI SELECT | 5571 N. GLENWOOD ST., BOISE, ID 83714 | 208.229.2020

NAISelect