

FOR LEASE **Santa Rosa**

# Fountaingrove Center



Overlooking Santa Rosa's prestigious Fountaingrove Submarket



# FOR LEASE **Santa Rosa** **Fountaingrove Center**



## Class A Offices in Santa Rosa's Prestigious Fountaingrove Submarket

Type:  
**Office**

Address:  
**3550 - 3558 Round Barn Blvd.  
Santa Rosa, CA**

Range of Available SF:  
**763 - 17,023**

# of Floors:  
**Three Buildings, Three-Stories Each  
3 Stories**

### **DESCRIPTION**

A three-building complex with each building featuring three stories of Class A office space for a combined total of 161,055 square feet and which collectively are known as Fountaingrove Center. They are situated overlooking Santa Rosa's prestigious Fountaingrove submarket with convenient access to Highway 101. The center offers ample free parking for employees and clients plus an automated card key system for safe after-hours access.

### **LOCATION**

Fountaingrove Center is at 3550, 3554 and 3558 Round Barn Boulevard respectively and is just ten minutes from Sonoma County Airport. The center's close proximity to Highway 101 means tenants can enjoy the nearby Coddington Mall, Fountaingrove Golf and Athletic Club, Wells Fargo Center for the Arts as well as a wide selection of retail, restaurants and other services.

### **AMENITIES**

The on-site Fountaingrove Deli provides a quick, tasty and healthy menu. An on-site fitness center with showers make lunchtime workouts easy and efficient. The on-site Conference Center provides accommodation and convenience. Spectacular wine country views from the expansive floor-to-ceiling glassline provide an unbeatable work environment. The property is locally owned with on-site property management.

### **KEY TENANTS**

Kaiser ACS Clinic	Kaiser Health Connect
Kaiser Home Health	Kaiser Foundation Hospitals
Stifel, Nicolaus & Co.	Raymond James Financial
Umpqua (formerly Sterling Savings)	Wells Fargo Bank



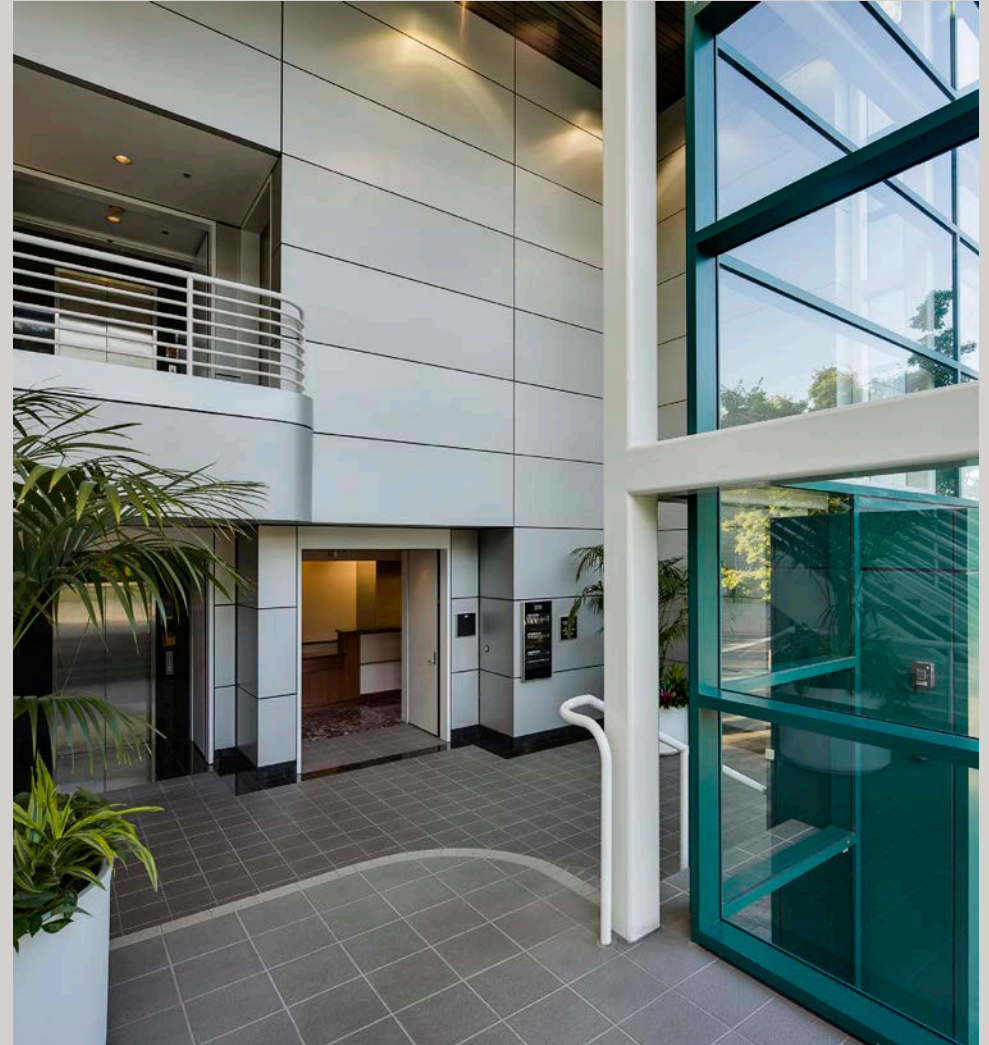
EXCLUSIVELY MARKETING BY:  
**Shawn Johnson**  
DRE#: 00835502

**Dave Peterson**  
DRE#: 01280039

**Brian Keegan**  
DRE#: 01809537



# FOR LEASE **Santa Rosa** **Fountaingrove Executive Center**



EXCLUSIVELY MARKETING BY:

**Shawn Johnson**  
707.528.1400 ext. 238

**Dave Peterson**  
707.528.1400 ext. 210

**Brian Keegan**  
707.528.1400 ext. 249



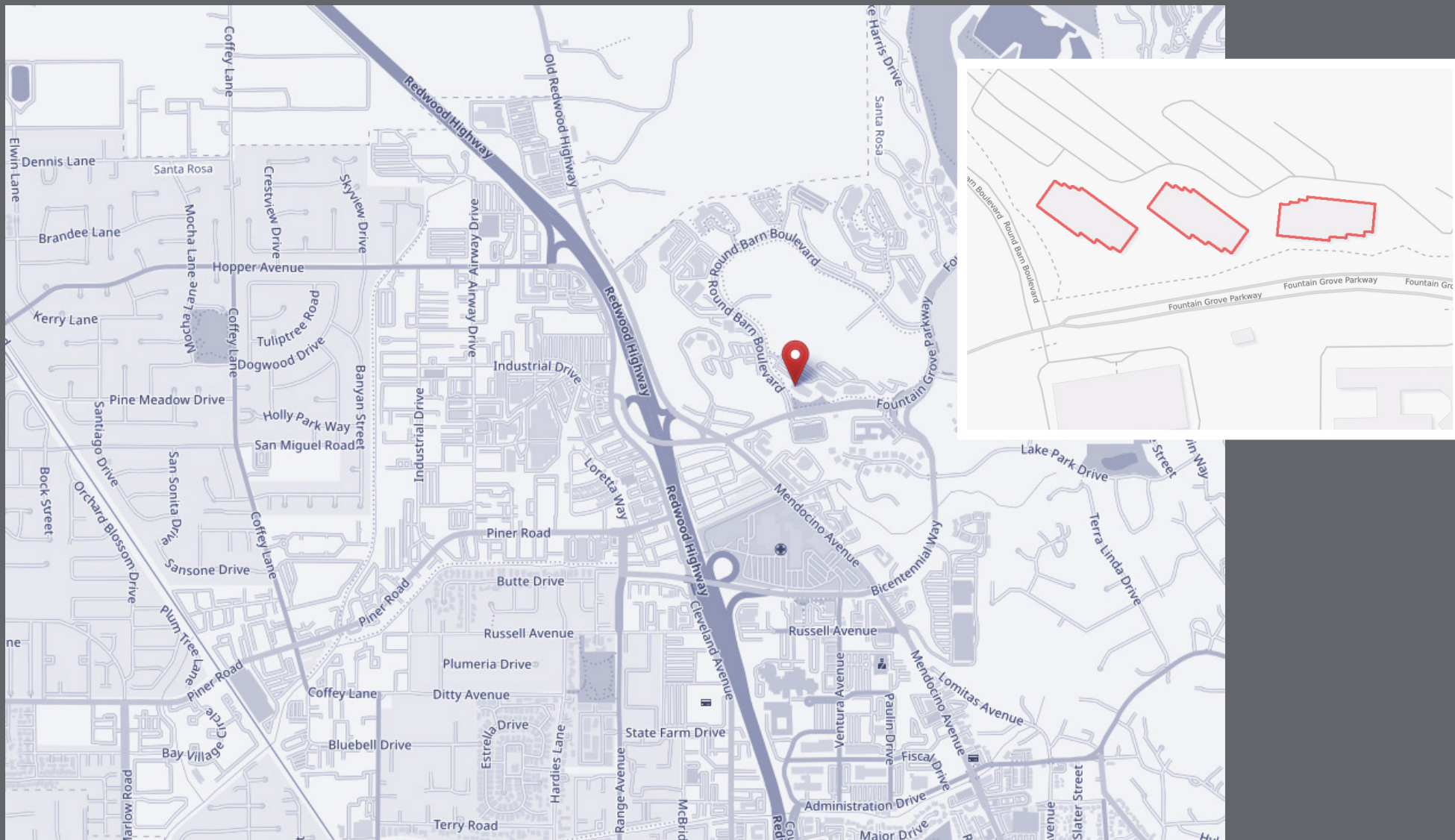
# FOR LEASE **Santa Rosa** Fountaingrove Executive Center





FOR LEASE **Santa Rosa**

# Fountaingrove Center



## Suite 100: 6,165+/- RSF

3550 Round Barn Blvd.  
First Floor

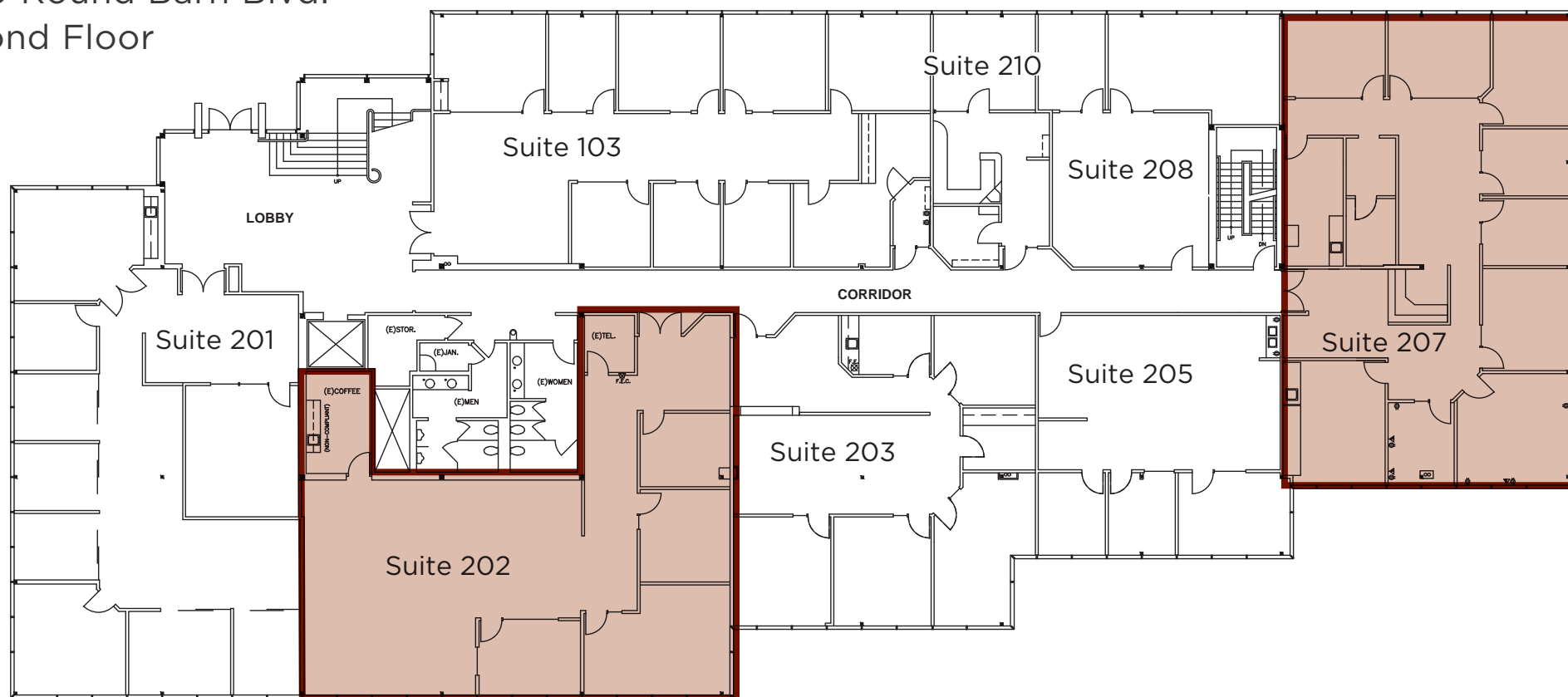


FOR LEASE **Santa Rosa**  
**Fountaingrove Center**



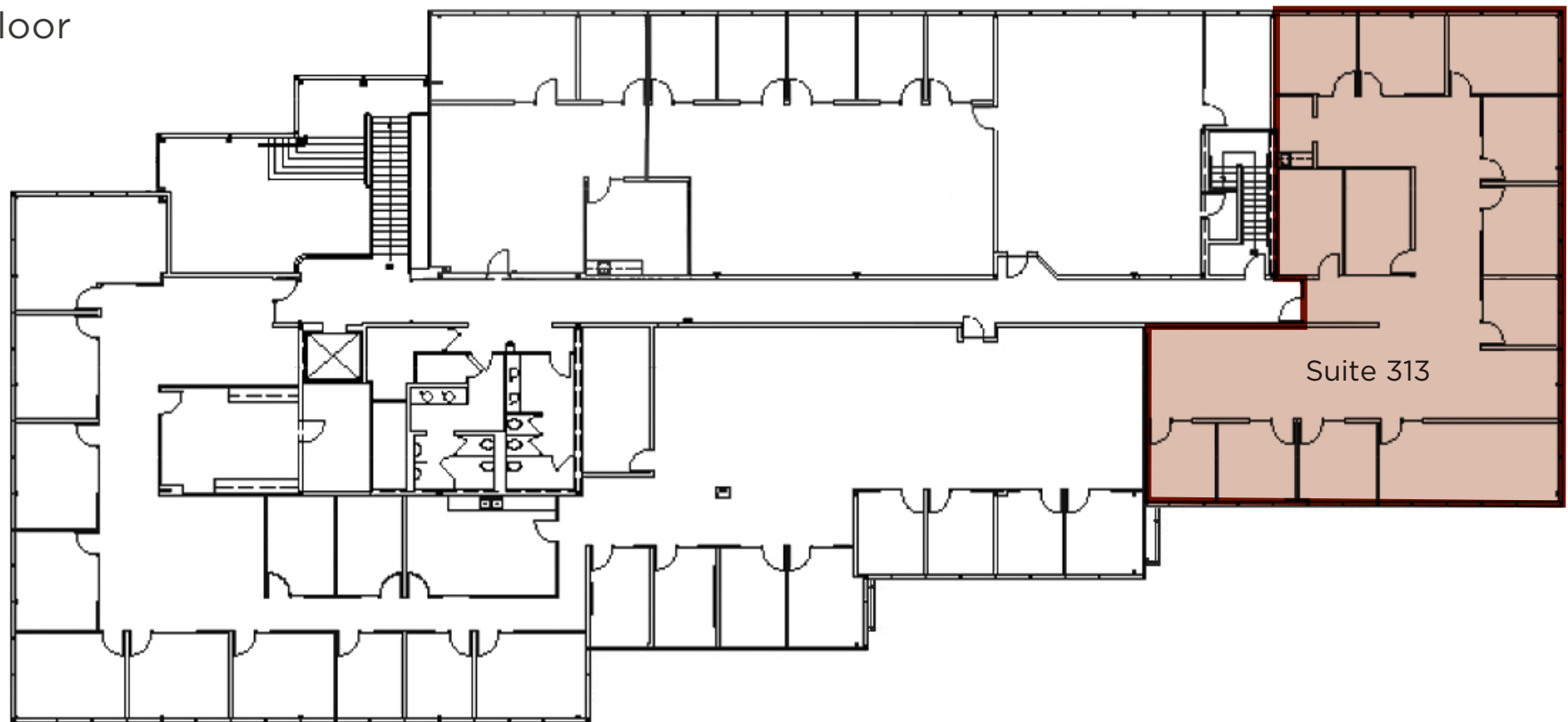
**Suite 207: 3,207+/- RSF**  
**Suite 202: 2,965+/- RSF**

3550 Round Barn Blvd.  
Second Floor



## Suite 313: 3,805+/- RSF

3550 Round Barn Blvd.  
Third Floor



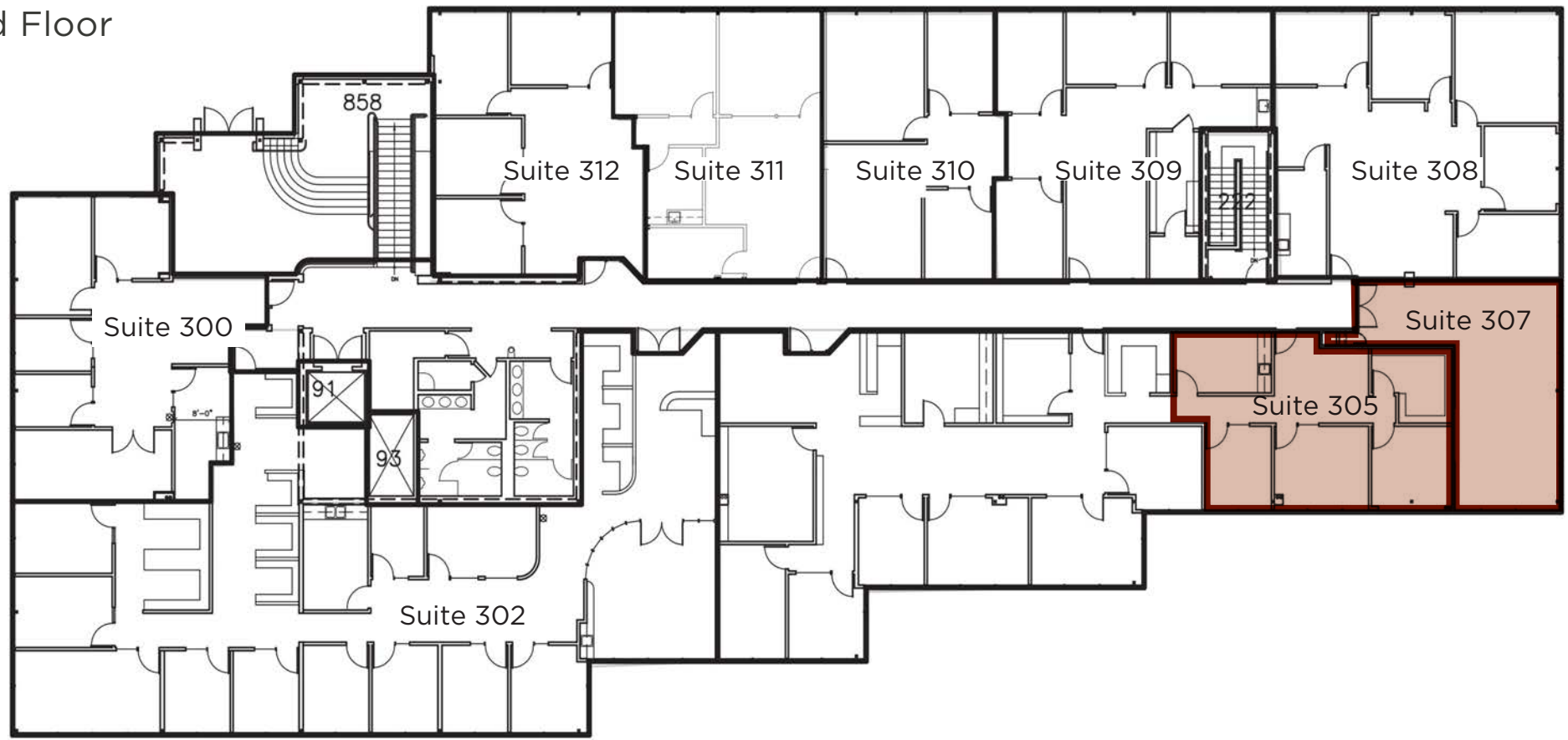


FOR LEASE **Santa Rosa**  
**Fountaingrove Center**



**Suite 305: 1,213+/- RSF**  
**Suite 307: 763+/- RSF**

3554 Round Barn Blvd.  
Third Floor

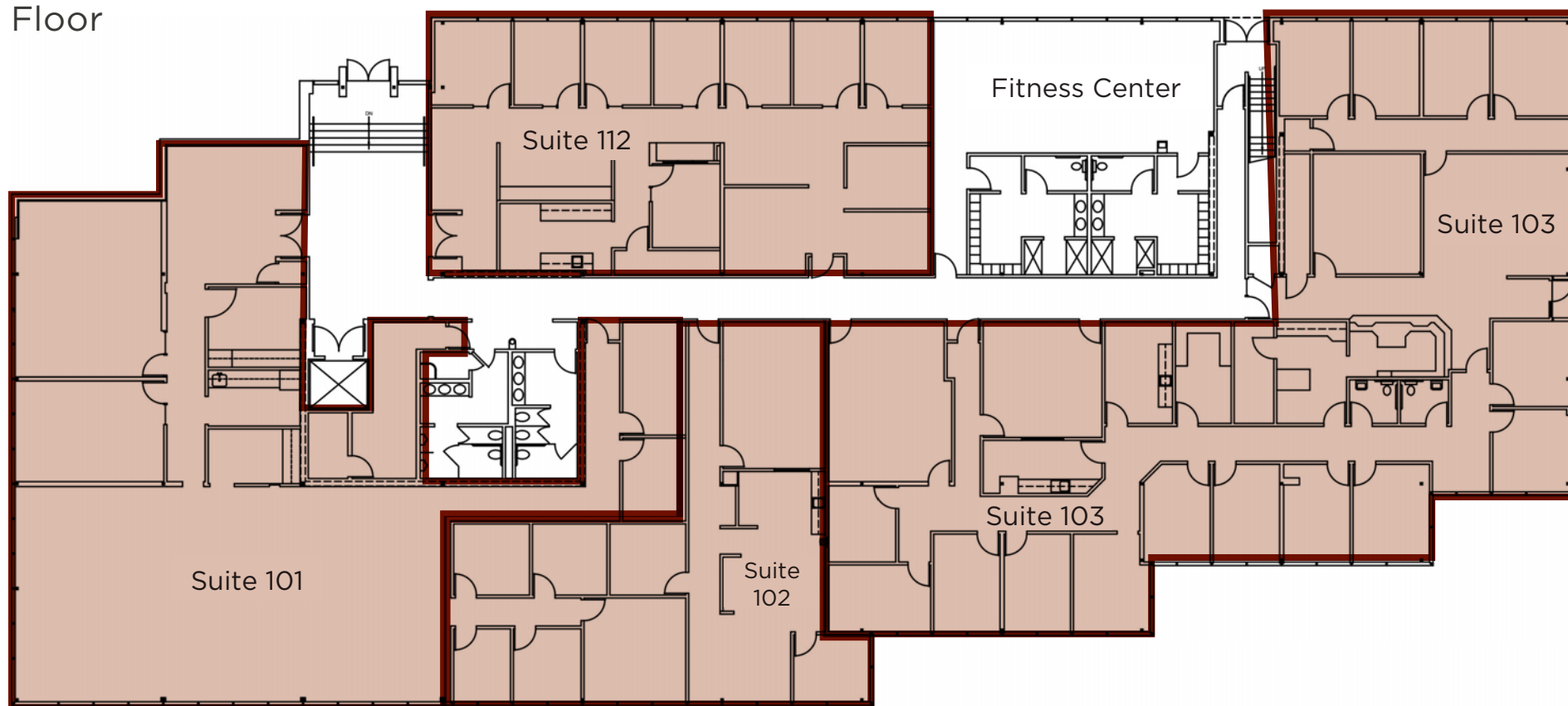


FOR LEASE **Santa Rosa**  
**Fountaingrove Center**



**Suite 101: 5,881 RSF** Available January 1, 2026  
**Suite 102: 1,479 RSF** Available January 1, 2026  
**Suite 103: 6,710 RSF** Available January 1, 2026  
**Suite 112: 2,953 RSF** Available January 1, 2026

3558 Round Barn Blvd.  
First Floor



EXCLUSIVELY MARKETING BY:

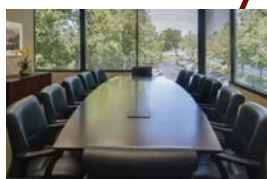
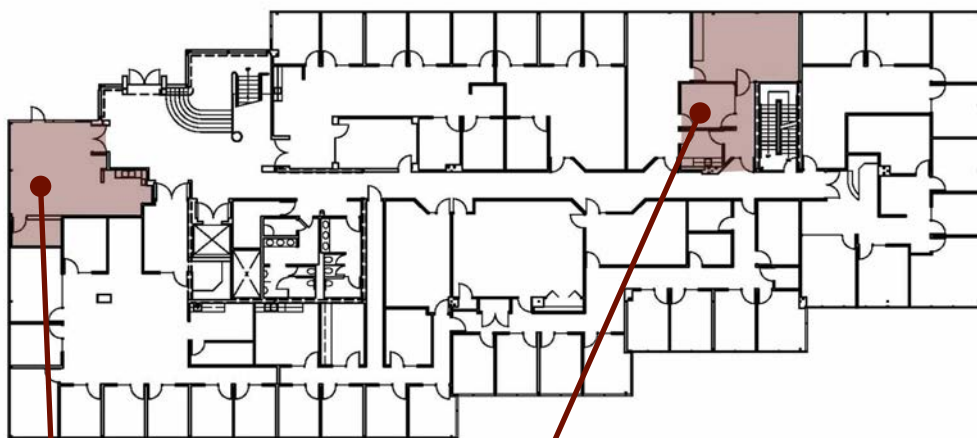
**Shawn Johnson**  
707.528.1400 ext. 238

**Dave Peterson**  
707.528.1400 ext. 210

**Brian Keegan**  
707.528.1400 ext. 249



## On-Site Amenities



Deli & Conference Center  
3554 Round Barn Blvd. 2nd Floor



Fitness Center with showers  
3558 Round Barn Blvd. 1st Floor