



## Downtown Westport Retail and Office For Lease Main Street Commons

190 Main Street  
Westport, CT  
*Fairfield County*





## Available Signage

All information from sources deemed reliable and is submitted subject to errors, omissions, change of price, rental, prior sale and withdrawal without notice.

## Location

On a prominent corner of Westport's busy main drag, with its own off-street parking. Good walking traffic.

## Uses

Zoned RBD - Retail



## Available Space

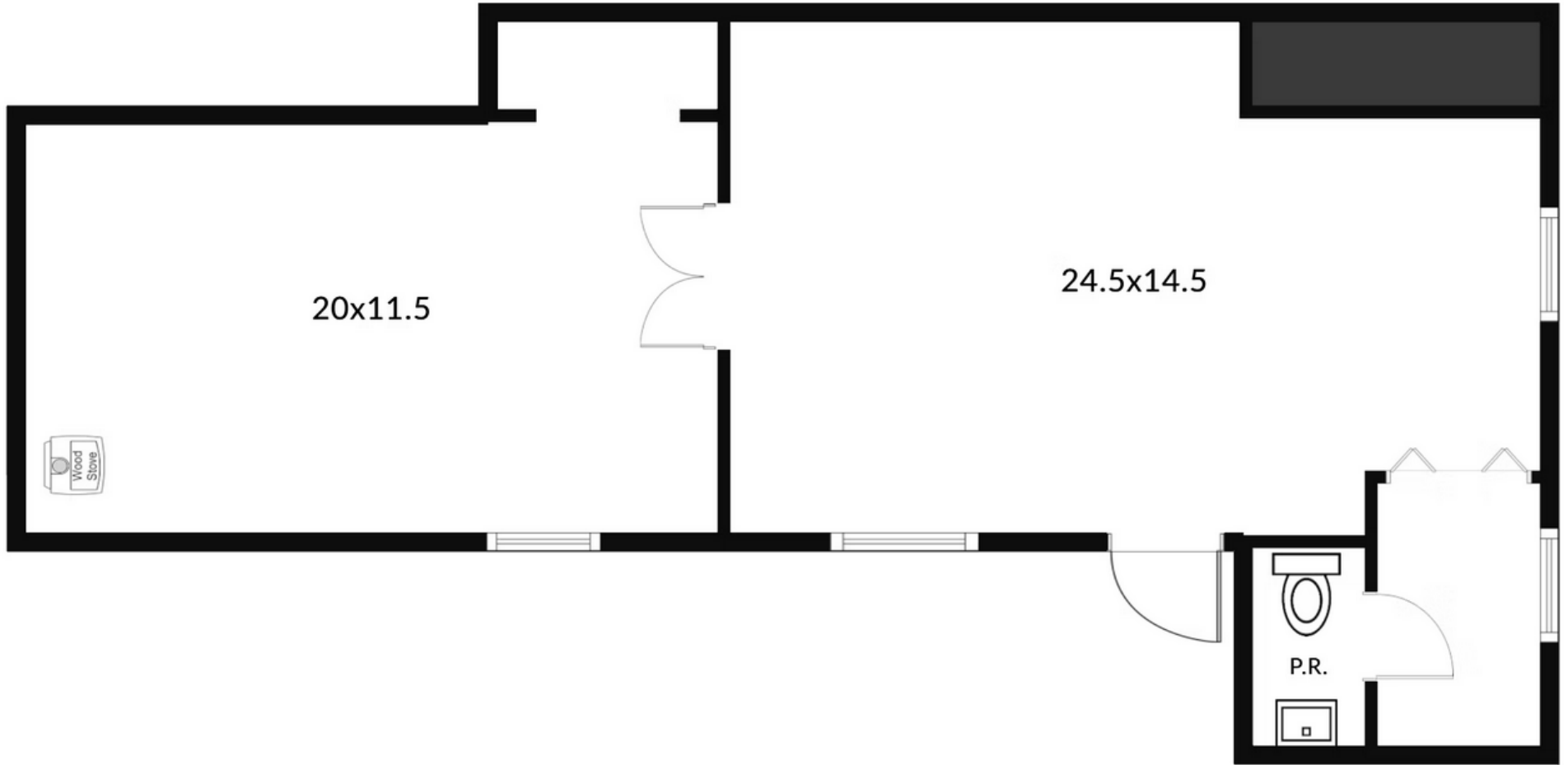
- Center Size: 9,000 SF +/-
- Available Space: 778 SF walk down retail  
1,242 SF second floor office
- Own Parking Lot
- Availability: Immediate

## Rent

- \$55 SF Gross + Electric - Retail Space
- \$29 SF Gross + Electric - Second Floor Office Space

All information from sources deemed reliable and is submitted subject to errors, omissions, change of price, rental, prior sale and withdrawal without notice.

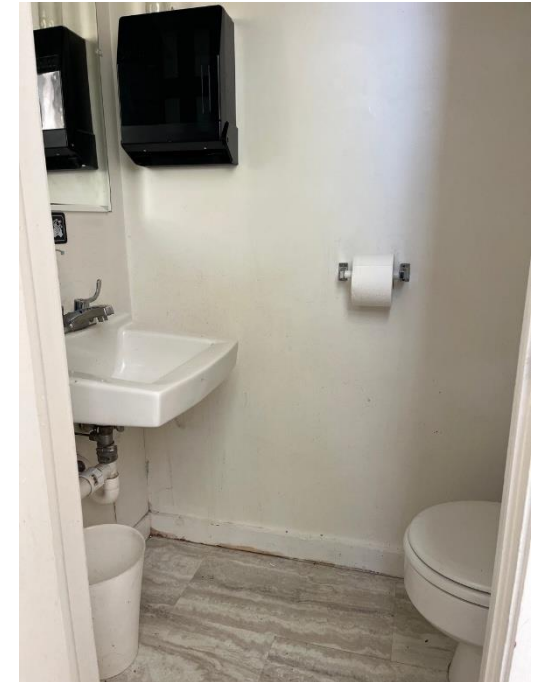




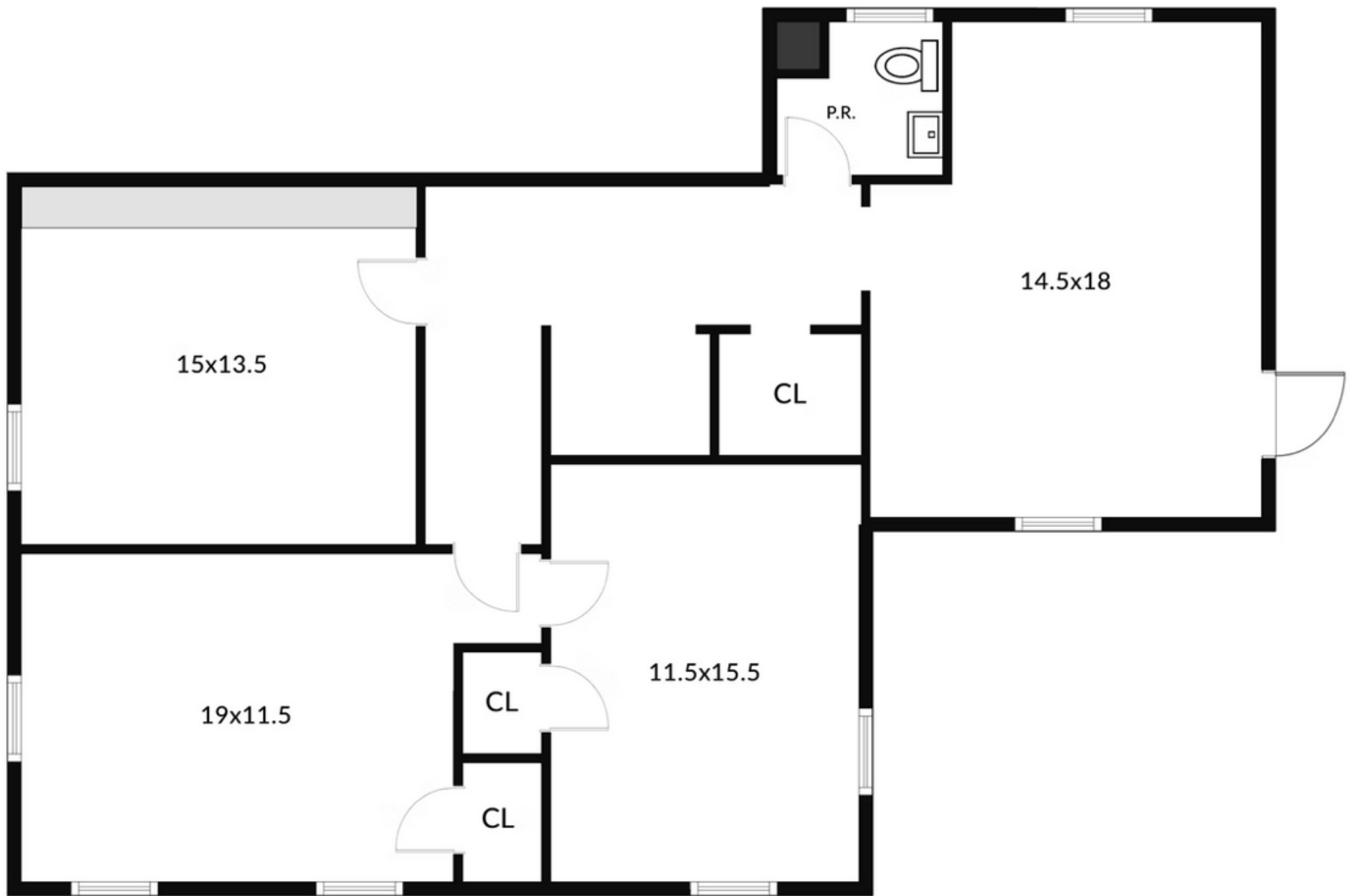
Retail Space



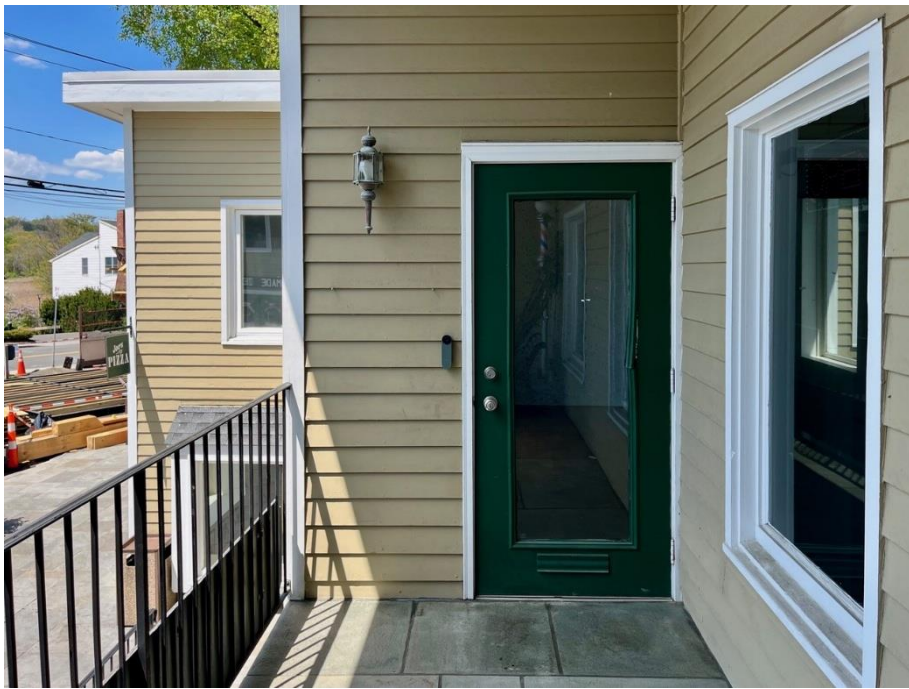
Retail  
Space



All information from sources deemed reliable and is submitted subject to errors, omissions, change of price, rental, prior sale and withdrawal without notice.



Second floor office space



Second floor office

All information from sources deemed reliable and is submitted subject to errors, omissions, change of price, rental, prior sale and withdrawal without notice.



Second floor office

All information from sources deemed reliable and is submitted subject to errors, omissions, change of price, rental, prior sale and withdrawal without notice.



190 Main Street

CTFN Catherine H.

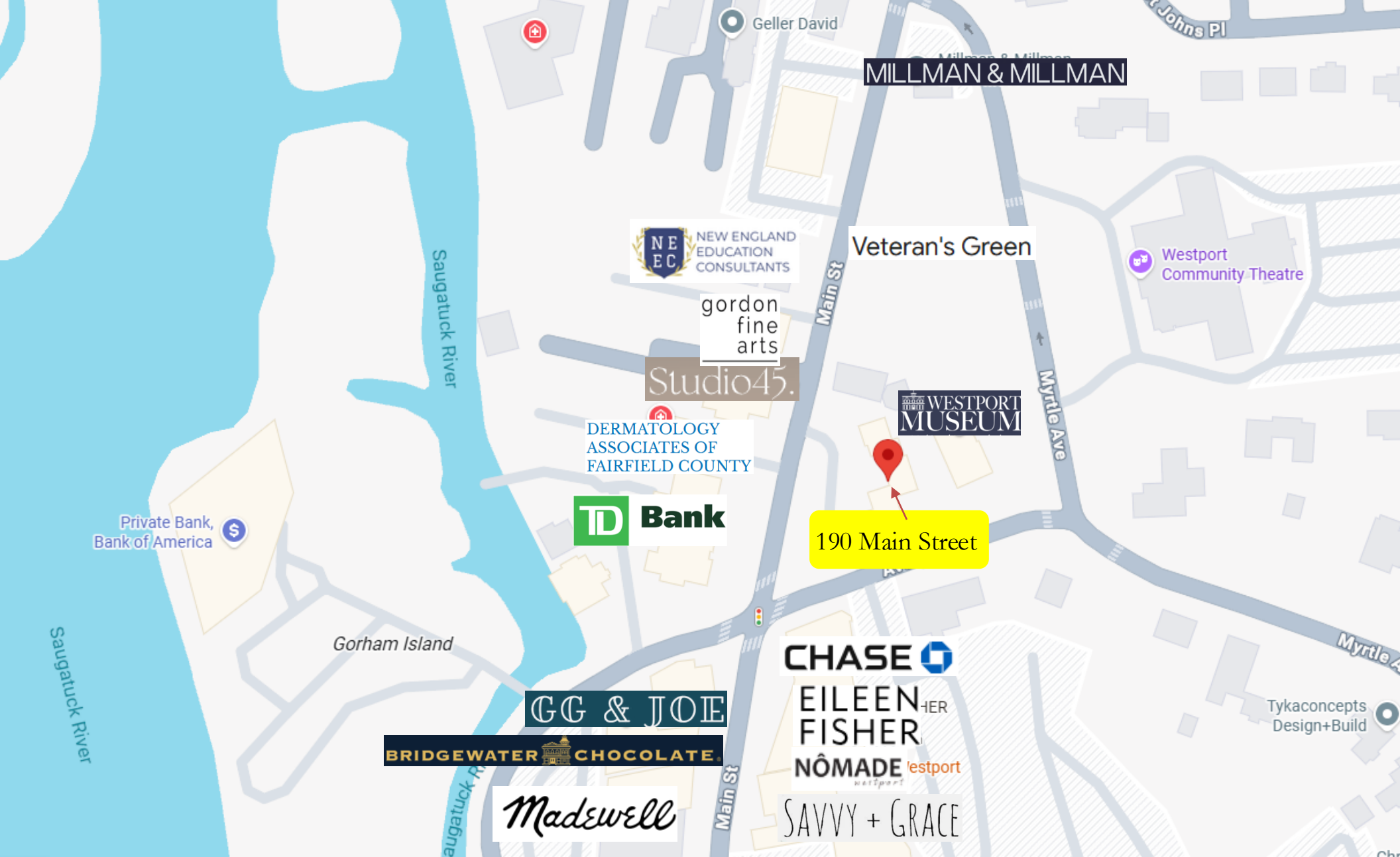
Avery Center

VUORI NÓMADE EILEEN FISHER

SIMON PEARCE CHASE

All information from sources deemed reliable and is submitted subject to errors, omissions, change of price, rental, prior sale and withdrawal without notice.

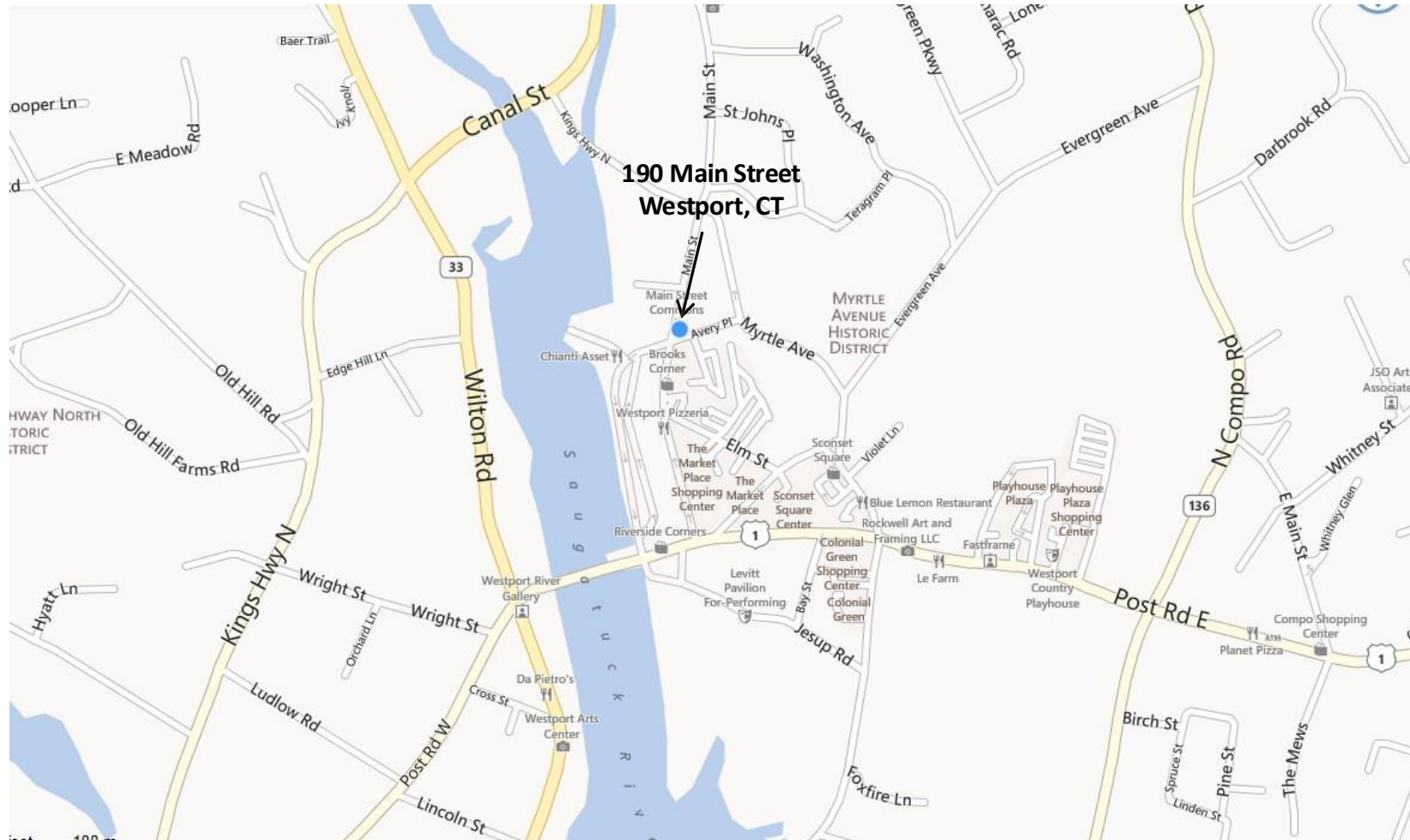




All information from sources deemed reliable and is submitted subject to errors, omissions, change of price, rental, prior sale and withdrawal without notice.



# Map



All information from sources deemed reliable and is submitted subject to errors, omissions, change of price, rental, prior sale and withdrawal without notice.



For additional information, please contact:

Franco Fellah  
Executive Vice President

HK Group II, Inc.  
Commercial Real Estate  
49 Riverside Avenue  
Westport, CT 06880

203-981-3476  
[ffellah@hkgrp.com](mailto:ffellah@hkgrp.com)

[www.hkgrp.com](http://www.hkgrp.com)