



For Lease

13,723 SF of flex space with ample clear height

141 Middlesex Turnpike is a +/- 33,000 SF building in Burlington, MA. The building has convenient access to I-95 & Route 3 and is ideally located near numerous amenities.

The available space is a combination of office and warehouse space with ample clear height, power and tailboard loading.

Sublease Highlights

- 1st Floor - 13,723 SF
- Three (3) tailboard loading docks [1 exclusive, 2 shared]
- Clear height of 15'8" to underside of the joist
- 800a, 480/277v, 3-phase power dedicated to space
- Fully Air-conditioned and column-free warehouse space
- Existing office space with 4 privates, conference room and kitchenette

141 Middlesex Turnpike,
Burlington, MA

Jordan Yarboro

+1 617 531 4262

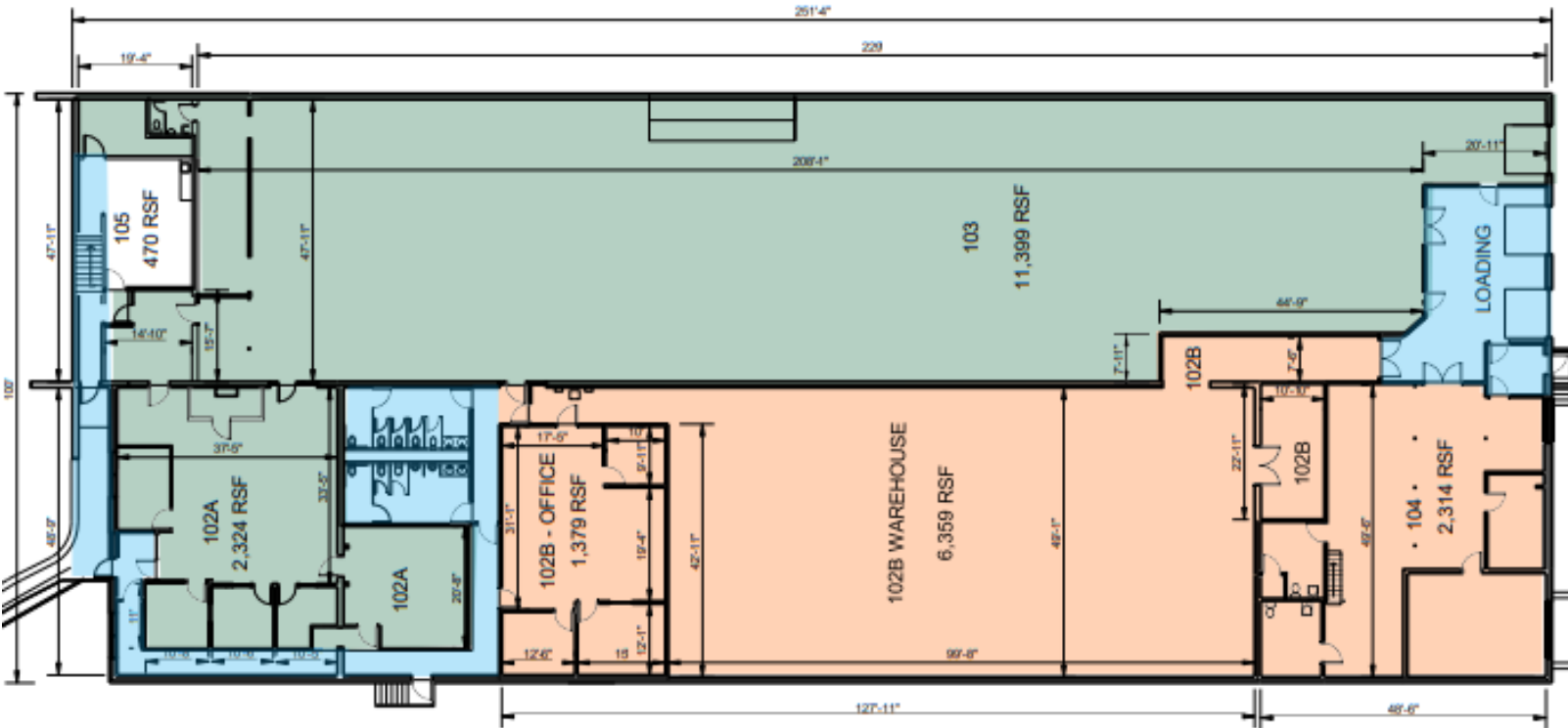
Jordan.Yarboro@jll.com



1st Floor | 13,723 SF

Leased

Available - 13,723 SF



DISCLAIMER

Although information has been obtained from sources deemed reliable, JLL does not make any guarantees, warranties or representations, express or implied, as to the completeness or accuracy as to the information contained herein. Any projections, opinions, assumptions or estimates used are for example only. There may be differences between projected and actual results, and those differences may be material. JLL does not accept any liability for any loss or damage suffered by any party resulting from reliance on this information. If the recipient of this information has signed a confidentiality agreement with JLL regarding this matter, this information is subject to the terms of that agreement. ©2020. Jones Lang LaSalle IP, Inc. All rights reserved.

