



Jay Leslie - 404.277.9191  
jleslie@AtlantaLandGroup.com

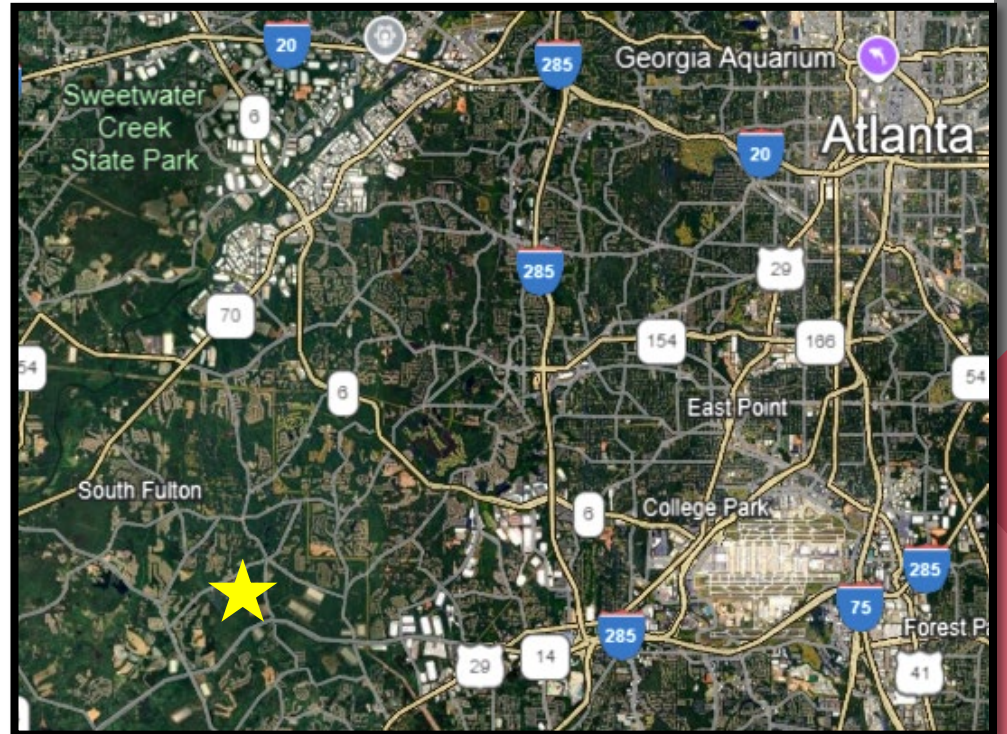
Trip Smith - 678.642.4640  
tsmith@AtlantaLandGroup.com

KW Commercial Peachtree Road  
804 Town Blvd. Ste A2040  
Atlanta, GA 30319  
404-419-3500



**For Sale**  
**+/- 16.8 Acres**  
**Residential Land**

**Bobby John Road**  
**South Fulton, GA**  
**Asking \$750,000**



# Executive Summary

+/- 16.8 Acres  
- 15 Acres Usable

Asking \$700,000

5 Parcels Assembled  
- Zoned R-2A; AG-1

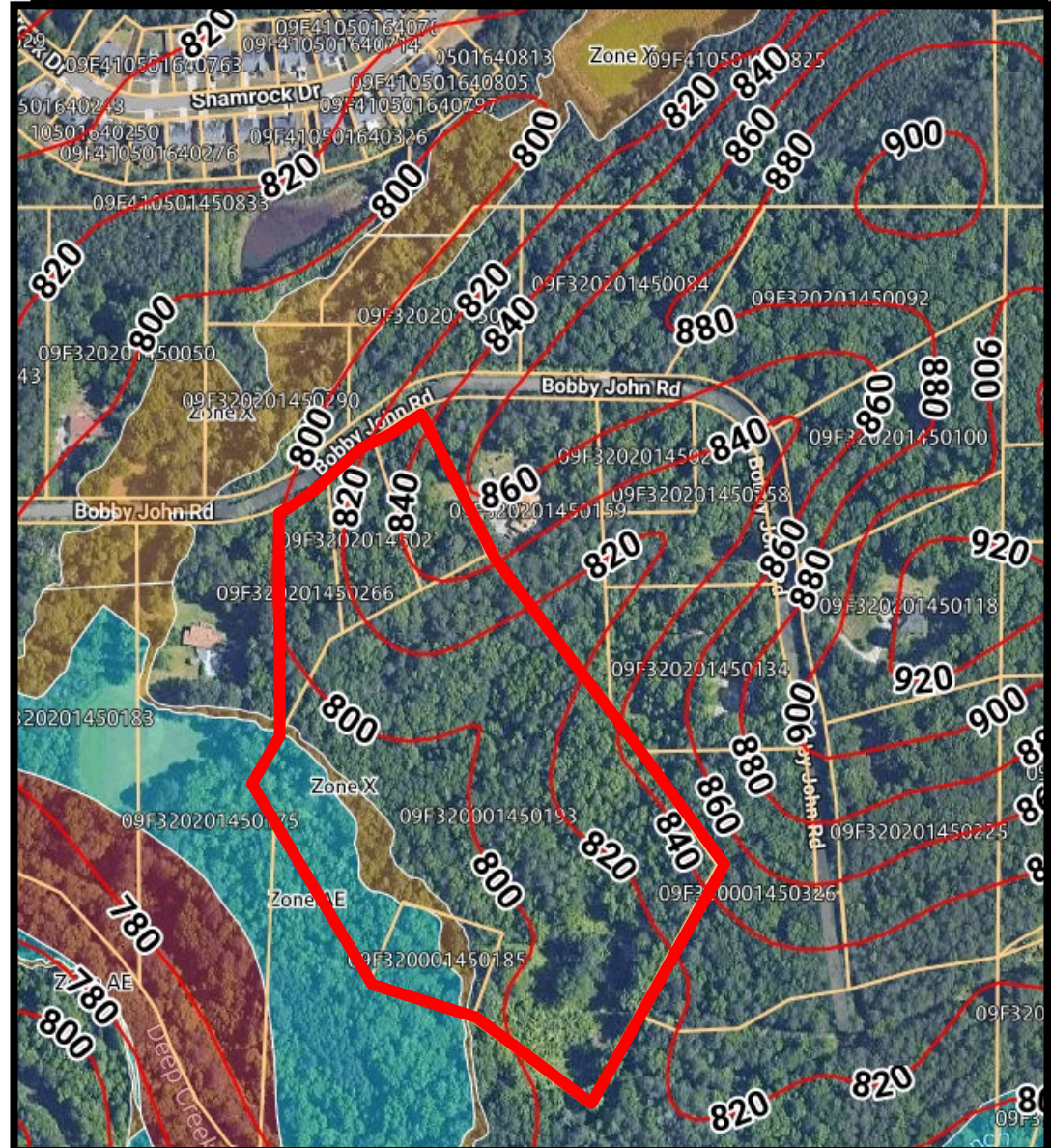
City of South Fulton

Wolf Creek Elementary  
Renaissance Middle School  
Langston Hughes High School

Utilities Available, No Sewer

Adjacent to City-Owned Greenspace

2.4 Miles to S. Fulton Pkwy, Publix,  
and other Shopping



## Site Description & Best Use

Great location just off South Fulton Parkway. Publix (and other commercial), as well as a good-looking Wolf Creek Elementary School within a short drive.

Excellent opportunity to develop 4-6 Estate lots. A custom builder would do well with such a site. Challenging topography makes the site difficult to develop into the modern-standard residential development; however, the location of this property offers some unique advantages. It's located near other large estate dwellings and overlooks large tracts of Greenspace owned by the City. This would create a private feel in a rapidly-growing part of South Fulton.

Map:

Yellow = Approximate Topography

Blue = Approximate Wetlands





Jay Leslie - 404.277.9191  
[jleslie@AtlantaLandGroup.com](mailto:jleslie@AtlantaLandGroup.com)

Trip Smith- 678.642.4640  
[tsmith@AtlantaLandGroup.com](mailto:tsmith@AtlantaLandGroup.com)



**Jay Leslie**  
Partner  
Atlanta Land Group  
[jleslie@atlantalandgroup.com](mailto:jleslie@atlantalandgroup.com)  
404.277.9191



**Trip Smith**  
Associate Broker  
Atlanta Land Group  
[tsmith@atlantalandgroup.com](mailto:tsmith@atlantalandgroup.com)  
678.642.4640