

BANQUET HALL FOR SALE

255 Hupp Road | La Porte, IN



Beautiful Large Hall With Two Separate Event Spaces and Fully Functional Kitchen

| | |
|-----------------|---------------------|
| Building Size: | 13,406 SF |
| Land: | 2.89 Acres |
| Zoning: | M2 |
| Year Built: | 1988 |
| Parking: | 100+ Parking Spaces |
| Ceiling Height: | 18' to 24' |
| List Price: | \$897,999 |

Details:

This beautiful, turn-key banquet hall is well maintained and was built in 1988. It has high ceilings, tile floors, and a fully functional kitchen. The facility has two conference rooms which can cater to two separate events. One room is 3,600 SF and the other is 6,000 SF each equipped with a bar and own set of restrooms. The property sits on 2.89 acres, is secured with high level fencing, and is in a great regional location drawing crowds from 50 miles or more.

[VIEW PROPERTY ONLINE](#)



NAI Cressy

P 574.271.4060 | [CRESSY.COM](https://cressy.com) | CONNECT WITH US! [in](#) [t](#) [f](#) [v](#)
200 N. Church St., Suite 200, Mishawaka, IN 46544

Cressy Commercial Real Estate is a Minority Business Enterprise (MBE) as well as certified by the National Native American Supplier Council (NNASC).



Information furnished regarding property for sale, rental or financing is from sources deemed reliable. But no warranty or representation is made as to the accuracy thereof and same is submitted subject to errors, omissions, change of price, rental or other conditions, prior sale, leased, financing or withdrawal without notice. No liability of any kind is to be imposed on the broker herein. NAI Cressy is the Global Brokerage Division of Cressy Commercial Real Estate.

Roy Roelke
Senior Broker

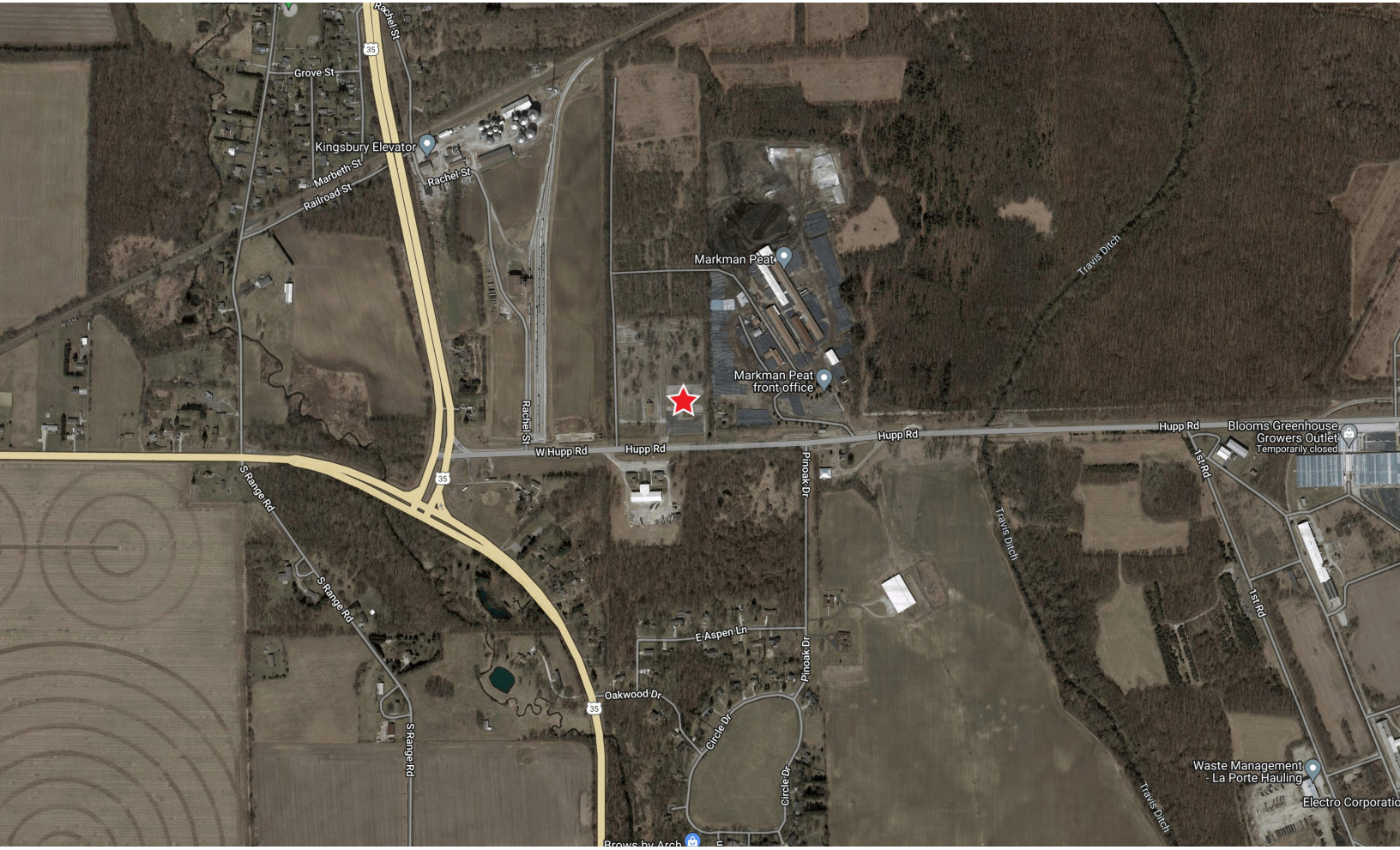
D 574.485.1537 | C 574.286.9159
rroelke@cressy.com



LOCATION OVERVIEW

BANQUET HALL FOR SALE

255 Hupp Road | La Porte, IN



- Located in La Porte County, Indiana, the property is a great regional destination with many cities in town within a one hour and fifteen minute drive.
- Surrounding cities include South Bend, Mishawaka, Elkhart, Plymouth, Chesterton, Valparaiso, La Porte, and Michigan City, Indiana as well as is New Buffalo, St. Joseph, and Kalamazoo, Michigan.
- Located just off US 35 and US 6.



NAI Cressy is the Global Brokerage Division of Cressy Commercial Real Estate.

Roy Roelke
Senior Broker

D 574.485.1537 | C 574.286.9159
rroelke@cressy.com



DISTANCE TO AREA CITIES

| | | | |
|-----------------|----------|----------------|----------|
| NEW BUFFALO, MI | 21 MILES | ST. JOSEPH, MI | 46 MILES |
| CHESTERTON, IN | 25 MILES | ELKHART, IN | 53 MILES |
| SOUTH BEND, IN | 27 MILES | CHICAGO, IL | 65 MILES |
| PLYMOUTH, IN | 29 MILES | KALAMAZOO, MI | 97 MILES |