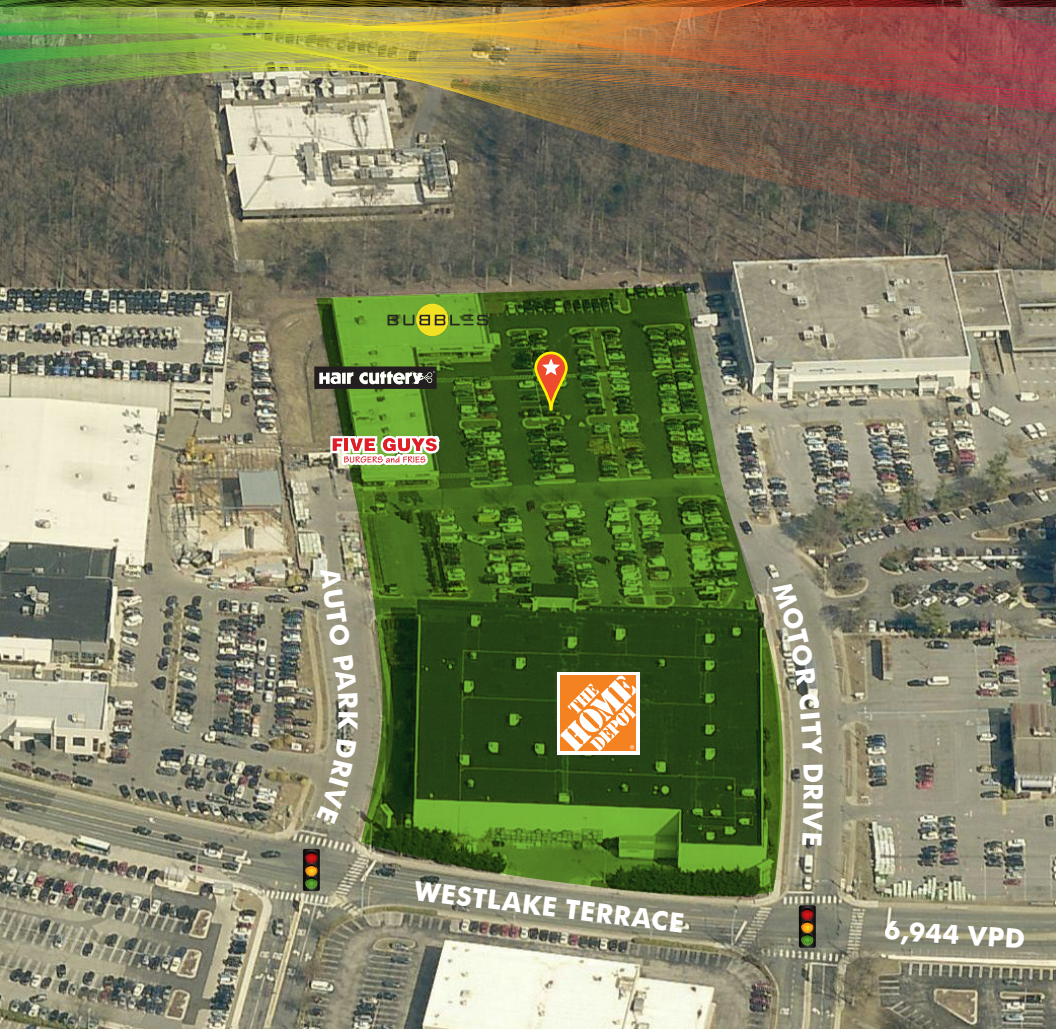


THE HOME DEPOT SQUARE

BETHESDA, MD



RETAIL SPACE FOR LEASE

LOCATION

- Conveniently located adjacent to Westfield Montgomery Mall directly off I-270 and Westlake Terrace.

AVAILABILITY

- **6,278 SF**
- **3,000 SF (COMING AVAILABLE)**
- **3,172 SF**

PROPERTY HIGHLIGHTS

- 130 + Surface Parking Spaces
- 140,000 residents within a 10-min drive
- Over \$200,000 in HH Income within a 5-min drive
- Pylon signage available
- Join nearby retailers:



INLINE SHOPPING CENTER RETAIL SPACE AVAILABLE

WESTFIELD MONTGOMERY

**10414-10492 AUTO PARK AVE
BETHESDA, MD 20817**

**23,236 SF
TOTAL RETAIL**

PROUDLY REPRESENTED BY

MICHAEL ZACHARIA
Executive Vice President
+1 703 905 0268
michael.zacharia@cbre.com

LANCE LJ MARINE
Senior Vice President
+1 703 905 0331
lance.marine@cbre.com

KEITH VALENTINE
Senior Vice President
+1 678 718 1882
kvalentine@cpdispo.com



POPULATION

1 MI 8,387 3 MI 107,313 5 MI 291,768



EDUCATION

1 MI 75.3% 3 MI 51.5% 5 MI 73.3%



DAYTIME POPULATION

1 MI 26,871 3 MI 162,810 5 MI 367,101



MEDIAN AGE

1 MI 44.8 3 MI 44.7 5 MI 43

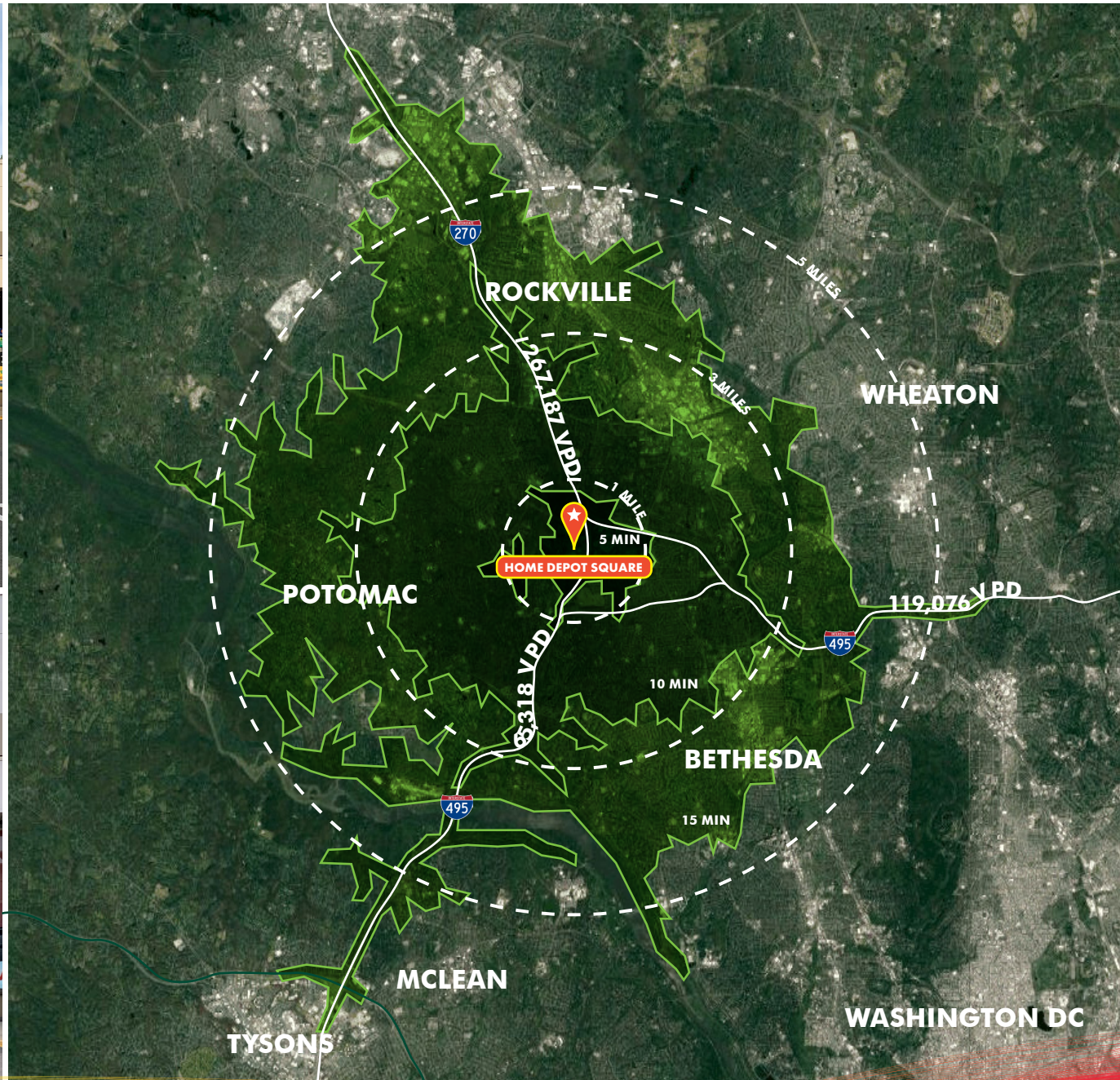


MEDIAN HHI

1 MI \$108,589 3 MI \$108,589 5 MI \$124,276

AERIAL OVERVIEW

THE HOME DEPOT SQUARE
BETHESDA, MD



AERIAL OVERVIEW

THE HOME DEPOT SQUARE BETHESDA, MD



SITE PLAN

**PROUDLY
REPRESENTED BY**

CBRE

MICHAEL ZACHARIA

Executive Vice President
+1 703 905 0268
michael.zacharia@cbre.com

LANCE LJ MARINE

Senior Vice President
+1 703 905 0331
lance.marine@cbre.com



KEITH VALENTINE

Senior Vice President
+1 678 718 1882
kvalentine@cpdispo.com

© 2021 CBRE, Inc. All rights reserved. This information has been obtained from sources believed reliable, but has not been verified for accuracy or completeness. You should conduct a careful, independent investigation of the property and verify all information. Any reliance on this information is solely at your own risk. CBRE and the CBRE logo are service marks of CBRE, Inc. All other marks displayed on this document are the property of their respective owners, and the use of such logos does not imply any affiliation with or endorsement of CBRE. Photos herein are the property of their respective owners. Use of these images without the express written consent of the owner is prohibited.

CBRE

www.cbre.us/bethesdasquare

