

# TIGARD BUSINESS PARK



**FOR LEASE**

11852 - 12000 SW GARDEN PLACE | TIGARD | OREGON | 97223

## FOR MORE INFORMATION:

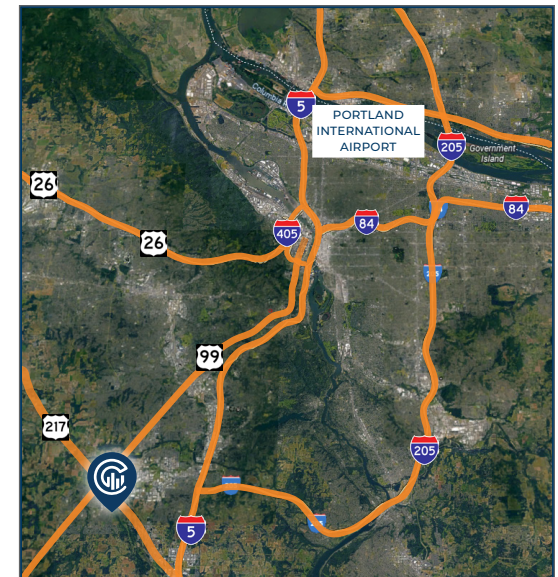
**SCOTT MILLER**  
971.275.0341  
scottm@capacitycommercial.com

**ALLEN PATTERSON, SIOR**  
503.781.4015  
allen@capacitycommercial.com

**CAPACITY COMMERCIAL GROUP**  
805 SW Broadway, Suite 600  
Portland, OR 97205  
capacitycommercial.com

## PROPERTY FEATURES

- 259,124 SF | 9 Office/Industrial/Retail Buildings
- Extensive Exterior Improvements Completed Including Modernized Signage & Branding, Exterior Painting, and Landscaping Enhancements
- Available Suites ±4,800 to ±6,800 SF
- Suites Ready for Immediate Occupancy
- Various Office Percentage Buildouts
- Frontage on SW Garden Place, Adjacent to Hwy-99 and Hwy-217

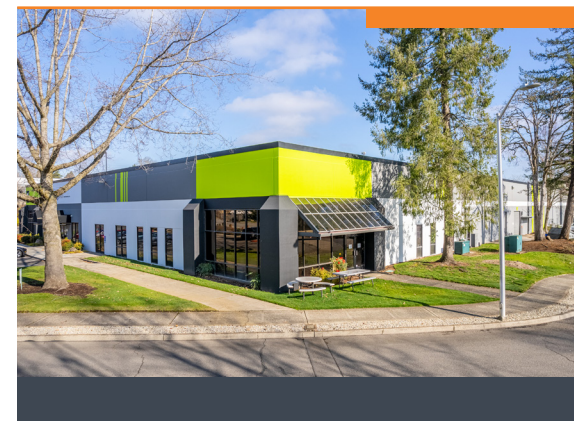


The information contained herein is believed to be accurate but is not warranted as to its accuracy and may change or be updated without notice. Seller or landlord makes no representation as to the environmental condition of the property and recommends purchaser's or tenant's independent investigation.



# TIGARD BUSINESS PARK

## SITE PLAN



### FOR MORE INFORMATION

**SCOTT MILLER**  
 971.275.0341  
 scottm@capacitycommercial.com

**ALLEN PATTERSON, SIOR**  
 503.781.4015  
 allen@capacitycommercial.com

**CAPACITY COMMERCIAL GROUP**  
 805 SW Broadway, Suite 600  
 Portland, OR 97205  
 capacitycommercial.com

### AVAILABILITIES

■ AVAILABLE ■ OCCUPIED

BLDG	SUITE	TOTAL SF	OFFICE SF	WAREHOUSE SF	TYPE
1	12236	5,106	2,659	2,447	Flex-Industrial
1	12250	6,800	6,800	None	Office
3	12172	6,000	1,356	4,330	Flex-Industrial
4	12120 *Available 8/25	8,005	1,958	6,047	Flex-Industrial

**THREE MONTHS FREE RENT ON NEW LEASES. CALL BROKER FOR DETAILS.**

**TIGARD BUSINESS PARK**  
 11852 - 12000 SW GARDEN PL  
 TIGARD, OR 97223

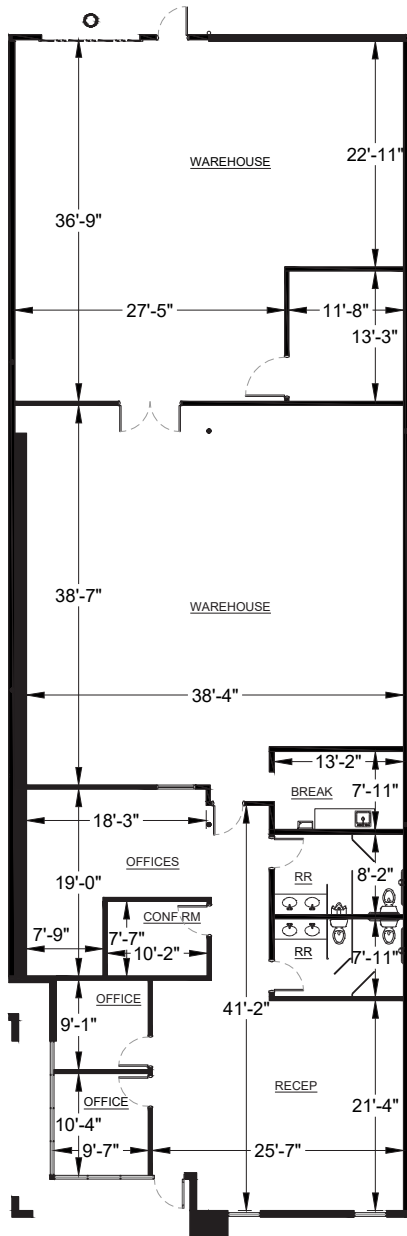




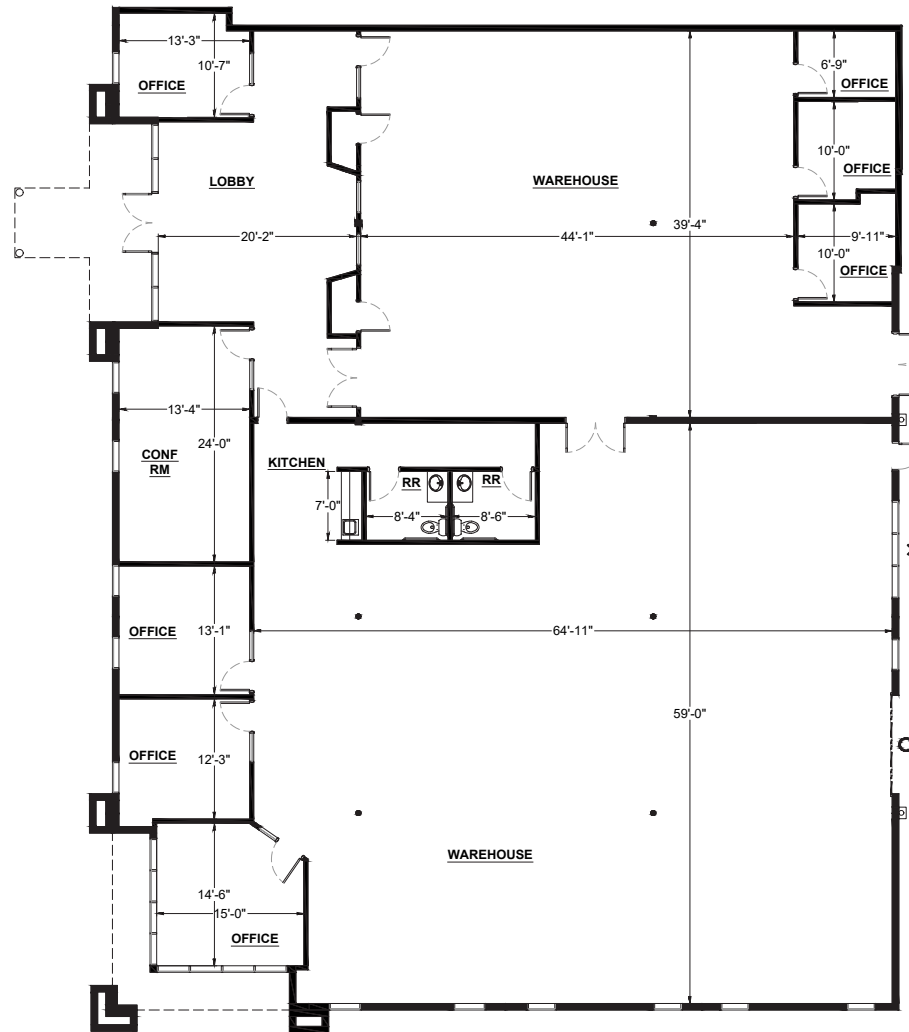
# TIGARD BUSINESS PARK



**BLDG 3**  
12126 SW GARDEN PL,  
TIGARD, OR



**BLDG 4**  
12120 SW GARDEN PL,  
TIGARD, OR



## FOR MORE INFORMATION

**SCOTT MILLER**  
971.275.0341  
scottm@capacitycommercial.com

**ALLEN PATTERSON, SIOR**  
503.781.4015  
allen@capacitycommercial.com

**CAPACITY COMMERCIAL GROUP**  
805 SW Broadway, Suite 600  
Portland, OR 97205  
capacitycommercial.com

**TIGARD BUSINESS PARK**  
11852 - 12000 SW GARDEN PL  
TIGARD, OR 97223

