

FOR LEASE

Crosswhite Industrial Park

9144 SE 67th Ave, Portland, Clackamas County 97206

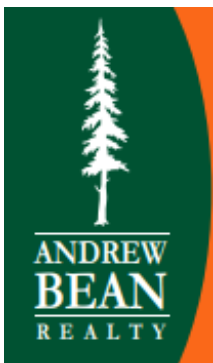


Freestanding Building with Dock/Grade Loading & Yard

No Multnomah County Taxes!

Call For Rates

Building Area:	+/-13,228 SF	Loading:	2 Dock-High + 2 Grade-Level Doors
Warehouse:	+/-10,275 SF	Ceilings:	14' – 16' Clear Height
Office:	+/-1,725 SF	Power:	+/-800 Amps, 480V 3-Phase
Mezzanine/Storage:	+/-1,228 SF	Features:	Ample Parking
Lot Size:	+/-1.15 Acres		Outdoor Storage/Yard Space
Zoning:	General Industrial (IG)	Divisible:	Divisible to +/-6,500 SF



Andrew Bean, SIOR

503-819-5381

andrew@andrewbeanrealty.com

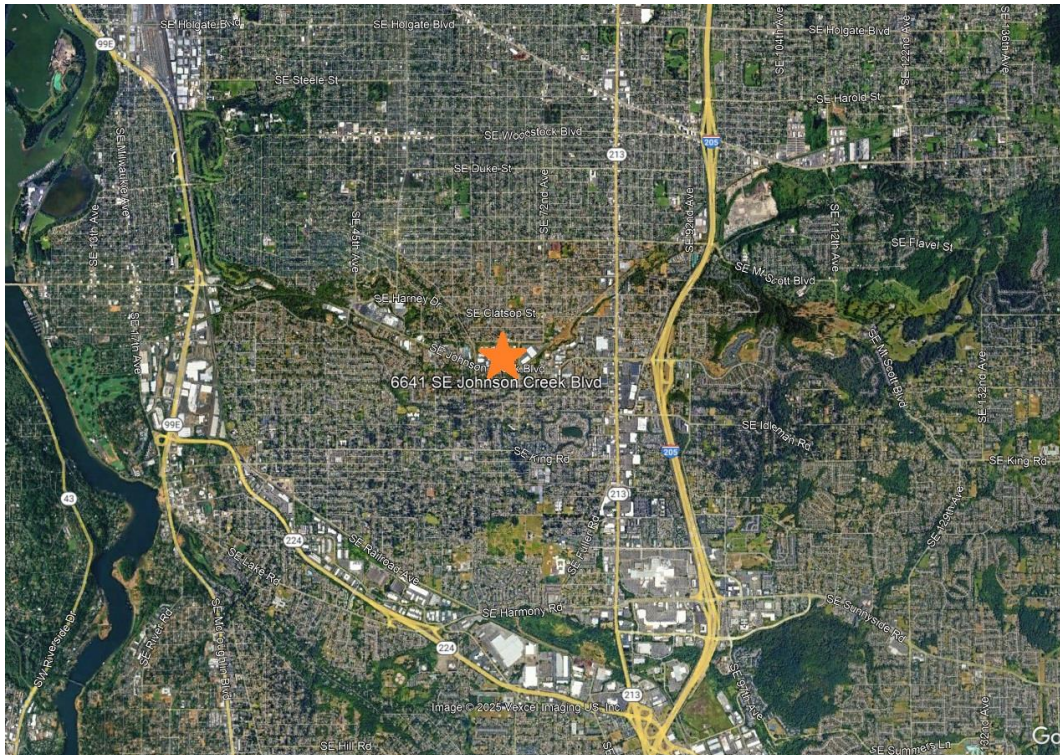
PO Box 10104
Portland, Oregon 97296

This information has been obtained by others and deemed to be reliable. However, a prospective purchaser or lessee is expected to verify all information to their own satisfaction.

FOR LEASE

Crosswhite Industrial Park

9144 SE 67th Ave, Portland, Clackamas County 97206



Andrew Bean, SIOR

503-819-5381

andrew@andrewbeanrealty.com

This information has been obtained by others and deemed to be reliable. However, a prospective purchaser or lessee is expected to verify all information to their own satisfaction.