

Houghton Plaza

720 6th Street S, Kirkland, WA 98033

BUILDING SIGNAGE
AVAILABLE

FACET
SYSTEMS

750

CALL FIRE DEPT.
EVERY BELL RINGS

2,456 RSF Office Space | Available Immediately

**Leibsohn
& Company** 



DAN KREKEL CCIM
Senior Vice President
+1 425 586 4655
dkrekel@leibsohn.com





MAXTON MACLACHLAN
Associate Vice President
+1 425 586 4659
mmaclachlan@leibsohn.com

Houghton Plaza

720 6th Street S, Kirkland, WA 98033

Property Features



- » Building Signage Available
- » Free Parking: 5 Surface Stalls & 3 Covered Stalls, plus street parking
- » Located across from Google Campus and close to Downtown Kirkland
- » LED Lighting
- » Excellent transit service with Metro Route 255 stop across the street
- » ADA Accessible Space
- » Building Equipped with Wet Pipe Sprinkler System
- » New Seal Coat & Striping of Parking Lot
- »  &  Available

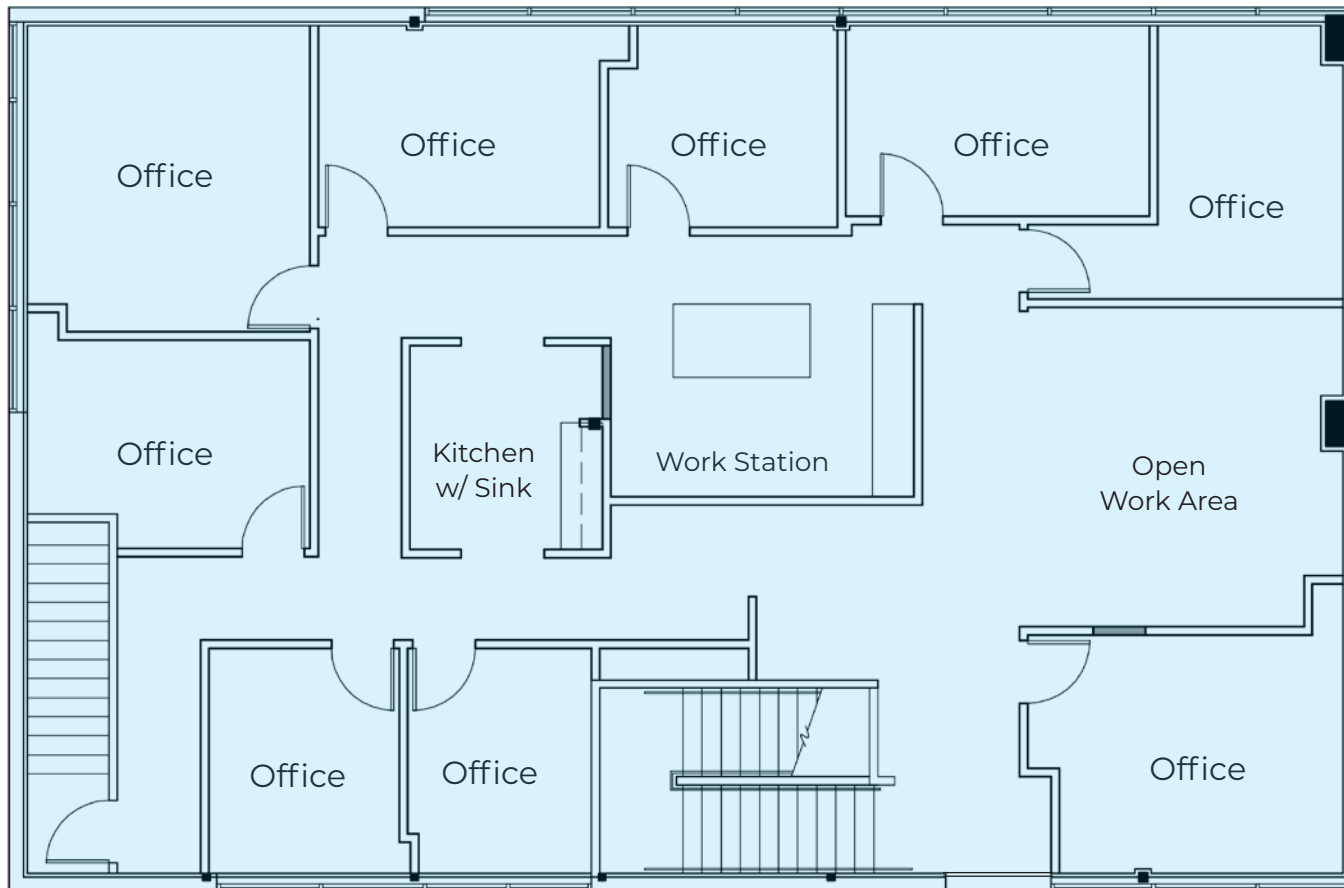


6th Street S



Houghton Plaza

720 6th Street S, Kirkland, WA 98033



Suite200



- 2,456 RSF
- Available Immediately
- \$37.50/RSF, Full Service
- \$9,210.00 per month, Full Service

SuiteFeatures



- » Abundance of Natural Light
- » Scenic Views
- » 9 Private Offices
- » Open Work Area
- » Kitchen w/ Sink



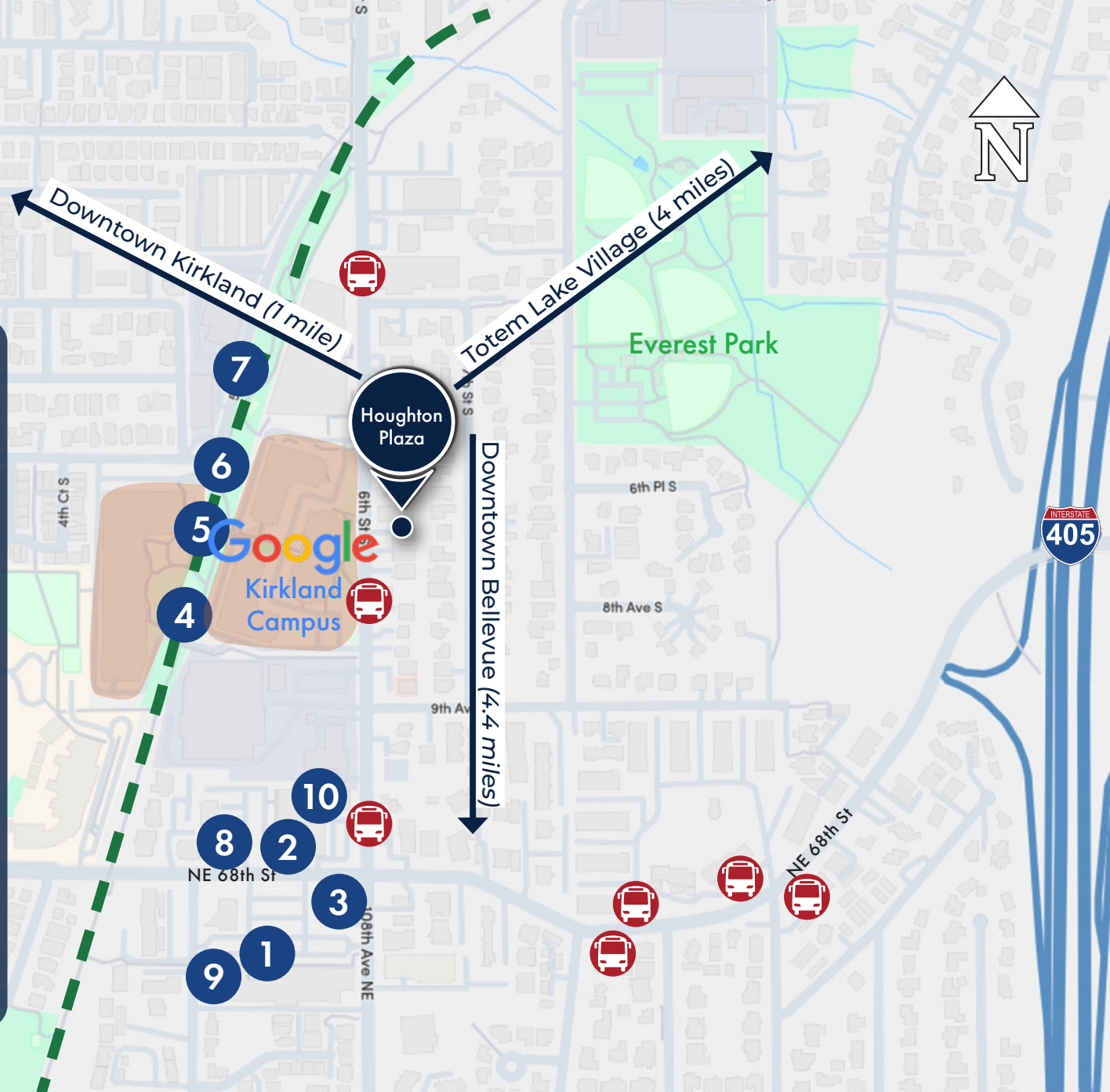
EASTRAIL



Major Bus Line Stop

NEARBY AMENITIES

1. Metropolitan Market
2. Bibi Mediterranean
3. Starbucks
4. Cross Kirkland Corridor Beach Volleyball Court
5. Cross Kirkland Corridor Beach Volleyball Court
6. Pickleball Court
7. Chainline Station Brewery
8. Kamakura Japanese Restaurant
9. Subway
10. Sarducci's Specialty Subs





Houghton Plaza

720 6th Street S, Kirkland, WA 98033

THE INFORMATION CONTAINED HEREIN HAS BEEN RECEIVED FROM SOURCES WE DEEM RELIABLE. WHILE WE HAVE NO REASON TO DOUBT ITS ACCURACY, WE DO NOT GUARANTEE IT. YOU ARE ADVISED TO INDEPENDENTLY VERIFY ALL INFORMATION. Leibsohn & Company 2025

