

AVAILABLE FEB 2024
Call For Lease Rates



1549 INDUSTRIAL DRIVE STOCKTON, CA



YARD 4± ACRES

The recently constructed asphalt paved yard includes full security fencing, 2 gated driveways, and yard lighting. The property is zoned I-G. (Industrial General) permitting storage yards. Ideal for dropyard, laydown yard, trailer storage, etc.



LOCATION

Located just north of the Stockton Metropolitan Airport, adjacent to Amazon's SMF3 Distribution Center. Ideally located between I-5 and Hwy 99 with excellent access to each via STAA Truck Route approved Arch/Sperry connector and French Camp/I-5 or Arch Road/Hwy 99 interchanges and midway between BN and UP intermodal yards and multiple large DCs serving the immediate area.



CONTACT US



Jim Kemmerer
Principal
425.837.1500
kemmerer@burrtemkin.com

Richard L. Burr
Broker
CA License# 00531722



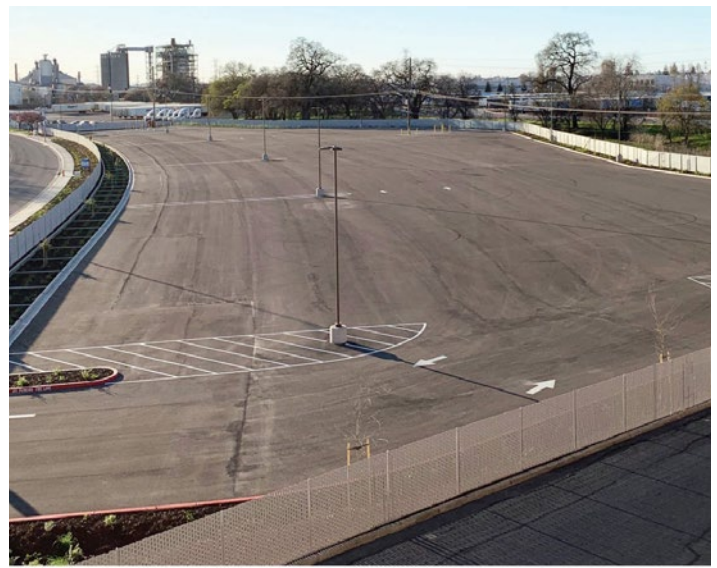
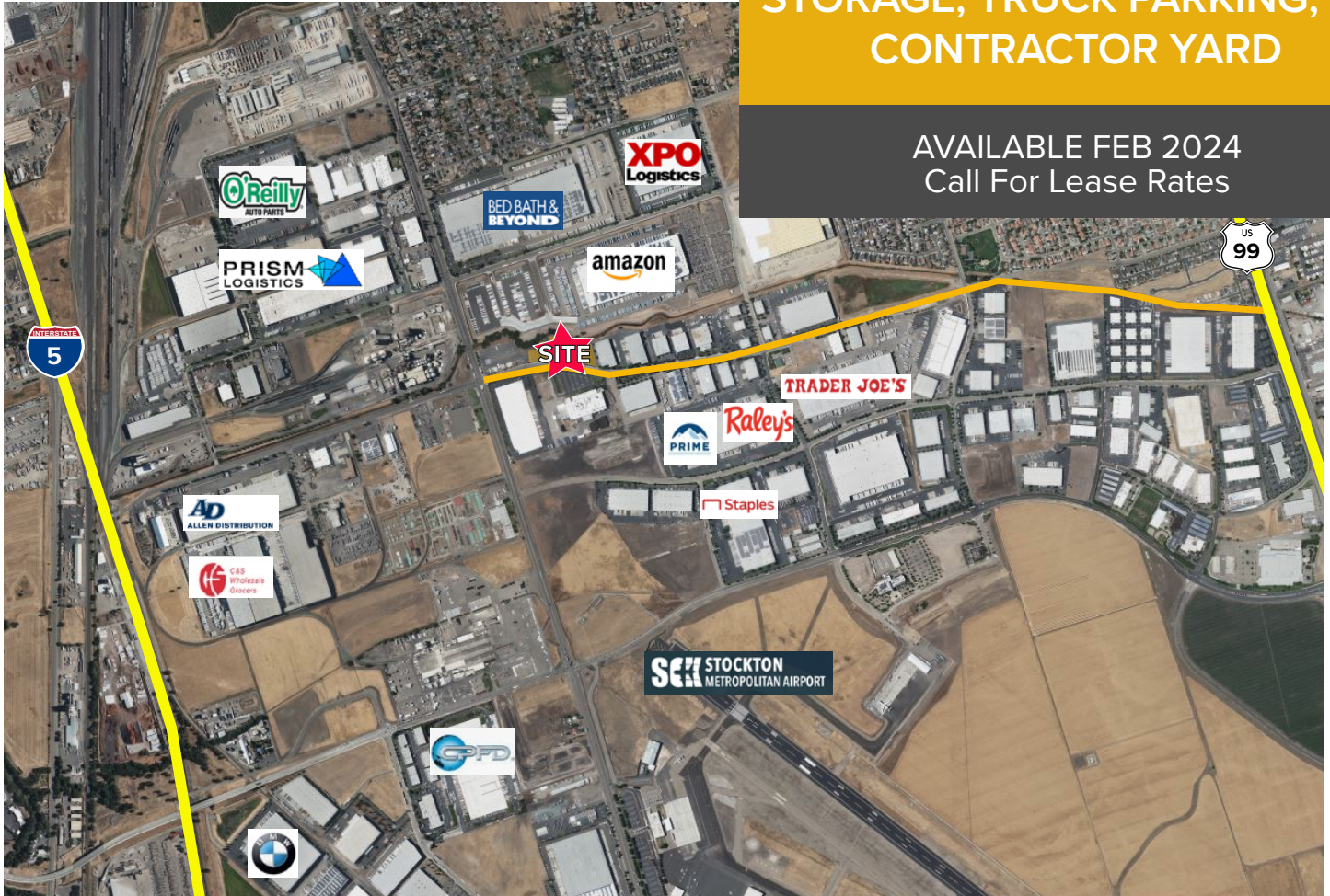
A Dayton Street
Partners Investment

This statement is based upon information we believe to be correct and is obtained from sources we regard as reliable, but we assume no liability for errors or omissions therein.

STOCKTON, CA

INDUSTRIAL OUTDOOR STORAGE, TRUCK PARKING, OR CONTRACTOR YARD

AVAILABLE FEB 2024
Call For Lease Rates



CONTACT US



Jim Kemmerer
Principal
425.837.1500
kemmerer@burrtemkin.com

Richard L. Burr
Broker
CA License# 00531722



A Dayton Street
Partners Investment