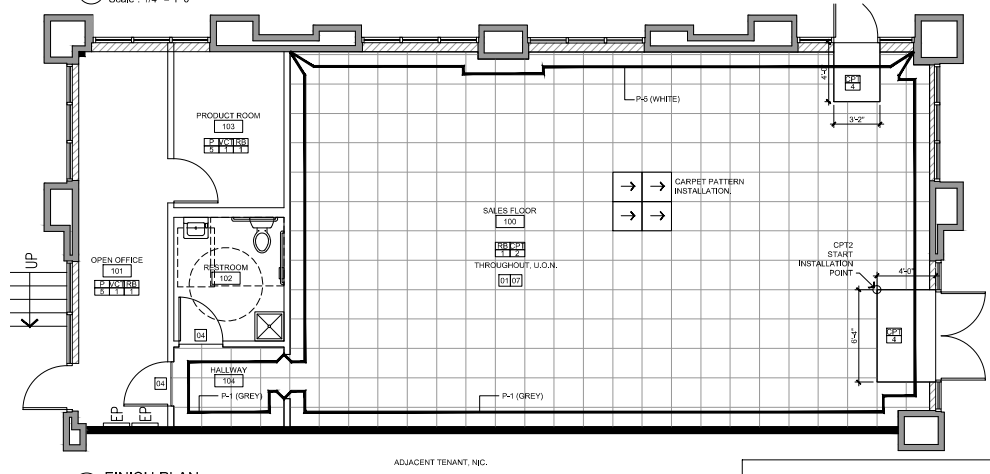


1 FLOOR PLAN  
Scale: 1/4" = 1'-0"



2 FINISH PLAN  
Scale: 1/4" = 1'-0"

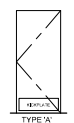
IT IS THE RESPONSIBILITY OF THE CONTRACTOR TO VERIFY ALL WALLS, FIXTURE LAYOUT, AND KEYNOTES IN CONFLICT PRIOR TO CONSTRUCTION. IT IS THE GC RESPONSIBILITY TO COORDINATE ALL TRADES. NOTIFY ARCHITECT IMMEDIATELY IF ANY DISCREPANCIES OCCUR. FAILURE TO DO SO WILL RESULT IN CONTRACTOR OWNING ALL RESULTING ISSUES.

DOOR SCHEDULE

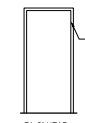
MARK	DOOR			TYPE	MATERIAL	FRAME				HARDWARE GROUP	COMMENTS
	WIDTH	HEIGHT	THICKNESS			HEAD	JAMB	MATERIAL	TYPE		
100A	3'-4"	7'-4"	1.34"	E	Existing	Existing	Existing	Existing	Existing	Existing	GC to provide additional hardware as needed to meet requirements for hardware group HW1AP
100B	3'-4"	7'-4"	1.34"	E	Existing	Existing	Existing	Existing	Existing	Existing	GC to provide additional hardware as needed to meet requirements for hardware group HW9
101	3'-4"	7'-4"	1.34"	A	WD-SC	8.0x1.0	9.0x1.0	STLKD	F1	HW3	GC to provide door closer, privacy lock and restroom signage per local codes.
102	3'-4"	7'-4"	1.34"	E	Existing	Existing	Existing	Existing	Existing	Existing	GC to provide door closer, privacy lock and restroom signage per local codes.
103	3'-4"	7'-4"	1.34"	A	WD-SC	8.0x1.0	9.0x1.0	STLKD	F1	HW9	GC to provide door closer.
104	3'-4"	7'-4"	1.34"	A	METAL	8.0x1.0	9.0x1.0	STLKD	F1	HW9	GC to provide door closer.

(E) EXISTING TO REMAIN. FOR TYPICAL DOOR CLEARANCES REFER TO #4&1.0.  
 (A) MINIMUM 24 INCHES AND MAXIMUM 44 INCHES ABOVE FINISHED FLOOR OR GROUND.  
 B. OPERABLE WITH ONE HAND, AND WITHOUT REQUIRING PINCHING, OR TWISTING OF THE WRIST.  
 C. MINIMUM 10 POUNDS OF FORCE TO OPEN ANY DOOR OR GATE.  
 D. ADD KICK PLATES TO ALL INTERIOR DOORS AS NECESSARY.

DOOR TYPES



FRAME TYPES



HARDWARE GROUP - HW1AP (PAIR EXTERIOR ALUMINUM)

ITEMS	MFR	MODEL
3 PR BUTTS	KAMMEER	412 X 4" BALL BEARING
2 FLUSHOUT	AR	405
1 DEADLOCK	MS-1008	1017
1 CLOSER	COOPERATIVE	W/DRNR
1 HUNG LUN	BES	REKACR19-320
2 PR FULL SET	KAMMEER	COCKR11 (H)
2 CLOSER	NORTON	1018P
2 DROP PLATE	KAMMEER	-
1 TRIP HOLD	KAMMEER	2 BUTT HMG
2 SNEP	ESBT	-
1 SEAL	ESBT	-
1 STRUGL	ESBT	-

HARDWARE GROUP - HW6 (PRVACY WITH CLOSER)

ITEMS	MFR	MODEL
112 PR BUTTS	STA	F837H-412 X 4 1/2
1 PRVACY LOCKSET	STA	800KDD-3426
1 CLOSER	QIA	D00049
1 MOD PLATE	QIA	17 X 2 1/2 LNW-16GA SST
1 STOP	STA	4185
1 BLENDER	QIA	3166
1 CDAT MODK	BBR	84107

HARDWARE GROUP - HW8 (STOREROOM LOCK)

ITEMS	MFR	MODEL
112 PR BUTTS	STA	F837H-412 X 4 1/2
120 ROOM LOCKSET	BES	8207020406
1 CLOSER	QIA	D00049
1 MOD PLATE	QIA	17 X 2 1/2 LNW-16GA SST
1 STOP	STA	4185
1 BLENDER	QIA	3166

HARDWARE GROUP - HW3 (PASSAGE WITH CLOSER)

ITEMS	MFR	MODEL
112 PR BUTTS	STA	F837H-412 X 4 1/2
1 PASSAGE	BES	800KDD-3426
1 CLOSER	QIA	D00049
1 MOD PLATE	QIA	17 X 2 1/2 LNW-16GA SST
1 STOP	STA	4185
1 BLENDER	QIA	3166

HARDWARE GROUP - HW9 (BOH EXIT DOOR)

ITEMS	MFR	MODEL
112 PR BUTTS	STA	F837H-412 X 4 1/2
4 RMR LOCK	AR	410-2024A
1 CLOSER (S)	NORTON	1018P
1 MOD PLATE (S)	QIA	17 X 2 1/2 LNW-16GA
1 TRIP HOLD	WCP	423 X 2 1/2 LNW-16GA
2 SNEP	WCP	423 X 2 1/2 LNW-16GA
1 SEAL	WCP	500A X 1/2 PERIMETER DOOR OPENING
1 DOOR SCOPK	SS	100092

SHEET NOTES

- GC TO INSTALL FIRE RETARDANT BLOCKING AS REQUIRED FOR ALL CASEWORK, SHELVING, COUNTERTOPS & OWNER PROVIDED EQUIPMENT.
- PATCH CONCRETE SLAS AS REQUIRED TO CONDUIT INSTALLATION, SEE ELECTRICAL FOR EXTENT OF TRENCHING, WHERE APPLICABLE.
- ALL DIMENSIONS ARE FINISH TO FINISH UNLESS NOTED OTHERWISE.
- MAINTAIN EXISTING FIRE RATINGS AT TENANT SEPARATION WALLS DURING DEMO/CONSTRUCTION ACTIVITIES. SEE INTERIOR ELEVATIONS ON SHEET #4&1 FOR ALL WALLS WHERE NO FINISH OR BASE IS INDICATED.
- PAINT ALL SALES FLOOR DOORS AND FRAMES (ALUMINUM STOREFRONT NOT INCLUDED) TO MATCH ADJACENT WALL COLOR, USING A SEMI-GLOSS FINISH GOR.
- ALL GIBB COLUMNS, IF APPLICABLE, ARE TO BE PAINTED P-1E DEEP SPACE.
- ALL WALLS TO HAVE SMOOTH FINISH.

LEGEND

- EXISTING WALL TO REMAIN.
- EXISTING DOOR - NEW DOOR ASSEMBLY.
- NEW INTERIOR SUITE WALL TENANT PARTITION, FLOOR TO FLOOR CEILING, DRYWALL TAPED SMOOTH TO RECEIVE PAINTING. REFER TO DETAIL #1-D-1.0.

KEY NOTES

- REFERENCE INTERIOR ELEVATIONS ON #4&1.0 FOR PAINT LOCATIONS, TYP.
- NEW ACCESSIBLE COMPLIANT RESTROOM, REF A-7.0.
- PROVIDE FIRE EXTINGUISHER 2A-10BC AS REQUIRED BY LOCAL CODES. MOUNT @ 42" TO 52" FROM FINISHED FLOOR TO THE TOP OF EXTINGUISHER.
- PROVIDE RUBBER TRANSITION STRIP, REF #B0-D-2.0.
- PROVIDE TACTILE "EXIT" OR "EXIT ROUTE" SIGN AT 60" A.F.F AS REQUIRED PER CURRENT LOCAL CODES. REF #3-D-1.0.
- PROVIDE SIGN ABOVE MAIN EXIT DOOR STATING THIS DOOR TO REMAIN UNLOCKED WHEN BUILDING IS OCCUPIED. USE 1" HIGH LETTERS WITH CONTRASTING BACKGROUND.
- ALL WALLS TO HAVE SMOOTH FINISH. LEVEL 5 FINISH REQUIRED.
- FURR-OUT WINDOW IN PRODUCT I/T ROOM.
- PROVIDE ISA SIGNAGE AT ENTRANCE DOOR, LOCATED AT THE RIGHT SIDE OF THE DOUBLE DOOR AT 40" TO 47" A.F.F AS REQUIRED PER CURRENT LOCAL CODES.
- PROVIDE CONTINUOUS 800 FLAT STRAP TO STUDS AT 1'-1" CL AND 8'-4" CL AFF BEHIND WALL FIXTURE, REFER TO A-5.0 FOR WALL FIXTURE LOCATIONS AND DETAIL 110-D-1.0 FOR FREESTANDING FIXTURE.
- PROVIDE BLACKOUT VINYL AT GLAZING IN BOH WHERE SHOWN.
- ADD STUDS AT 8" O.C. AT DEMISING WALL WHERE NOTED.

FINISH SCHEDULE

ROOM #	ROOM NAME	FLOOR	BASE	WALL	CEILING	COMMENTS
100	SALES FLOOR	CPT-2	RB-1	P-1, P-3	ACP-2	SEE FINISH PLAN AND INTERIOR ELEVATIONS.
101	OPEN OFFICE	VCT-1	RB-1	P-5	ACP-3	
102	RESTROOM	SV-1	RB-1	FRP-1P-5	GVP.BD.	
103	PRODUCT ROOM	VCT-1	RB-1	P-5	ACP-3	
104	HALLWAY	VCT-1	RB-1	P-5	ACP-2	

FINISH LEGEND

WALL PAINT:	FLOOR:	CEILING:
MANF: BENJAMIN MOORE COLOR: "DEEP SPACE" CODE: #2125-20 FINISH: EGG SHELL (GREY WALLS - SALES)	CARPET AT SALES COLLECTION PLACES STYLE: A181 8112 SBA TILE COLOR: 7248Y ADVENTURE CONTACT: MARK LAW 77004-H-345 mark.law@shawns.com	ACOUSTICAL CEILING PANELS AT SALES MANF: USG - ASTRO SIZE: 2' x 2' EDGE: SLT TILE COLOR: FLAT WHITE TRIM: 2" COMPRESSO ELITE AAS TRANSITION, GRID: DOWN DX 1518"
MANF: BENJAMIN MOORE COLOR: "DEEP SPACE" CODE: #2125-20 FINISH: SEMI GLOSS (BOH DOORS-FRAMES)	CARPET AT ENTRY MAT MANF: SHAW STYLE: AT 81 8007 COLOR: #31507/STERLING INSTALLATION: 2'X2 QUARTER TURNED CONTACT: MARK LAW 77004-H-345 mark.law@shawns.com	ACOUSTICAL CEILING PANELS AT BOH (when indicated) USG - RADAR CUMPLUS 2410 SIZE: 2' x 4' EDGE: SQUARE TILE COLOR: FLAT WHITE, GRID: DOWN DX 1518"
MANF: SHERWIN WILLIAMS COLOR: "CITYSCAPE" CODE: #SW 7067 FINISH: EGG SHELL (SALES FLOOR COLUMNS)	MANF: BENJAMIN MOORE COLOR: "HORIZON" CODE: 0068 FINISH: EGG SHELL (WHITE WALLS)	
MANF: BENJAMIN MOORE COLOR: "HORIZON" CODE: 0068 FINISH: SEMI GLOSS	VINYL COMPOSITION TILE MANF: ARMBRANDT NAME: IMPERIAL TEXTURE NUMBER: 5184 COLOR: STERLING SIZE: 12" x 12"	

ISSUE DATE

ISSUE	DATE

Konus + Keller  
 111 West Chanhassen, Suite 101, Chanhassen, MN 55015  
 952-895-1111  
 www.konus.com



AT & DEALER STORE  
 3626 W OLD SHAKOPEE RD  
 BLOOMINGTON, MN 55431

These drawings are the property of Konus + Keller. They are not to be reproduced without the written consent of Konus + Keller. The contractor is responsible for all dimensions and quantities shown on these drawings. The contractor is responsible for all dimensions and quantities shown on these drawings.

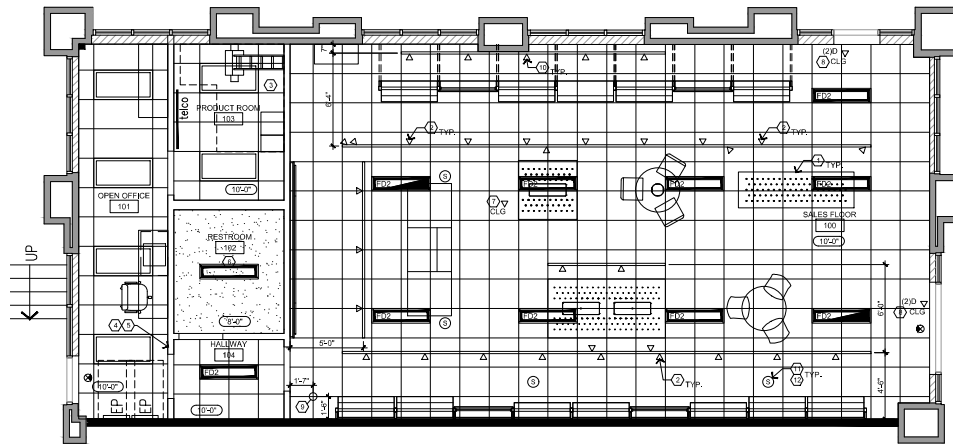
PROJECT NO. 18,0323,01

DRAWN/REVIEWED MS/EC

DATE/ISSUE 10.18.2018

SHEET TITLE PARTITION/FINISH PLAN

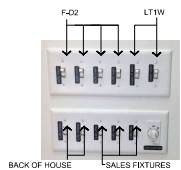
SHEET NO. A-2.0



1 REFLECTED CEILING PLAN  
Scale: 1/4" = 1'-0"

ADJACENT TENANT, N/C.

SWITCH LABELING (FOR REFERENCE ONLY)



ALL CIRCUITING BY ENGINEER AS REQUIRED BY CODE.

LIGHT FIXTURE LOCATIONS TAKE PRECEDENCE OVER SPRINKLER AND MECHANICAL DESIGN. RELOCATE SPRINKLER HEADS AND HVAC GRILLES AS REQUIRED.

IT IS THE RESPONSIBILITY OF THE CONTRACTOR TO VERIFY ALL WALLS, FIXTURE LAYOUT, AND KEYNOTES IN CONTACT PRIOR TO CONSTRUCTION. IT IS THE GC'S RESPONSIBILITY TO COORDINATE ALL TRADES, NOTIFY ARCHITECT IMMEDIATELY IF ANY DISCREPANCIES OCCUR. FAILURE TO DO SO WILL RESULT IN CONTRACTOR OWNING ALL RESULTING ISSUES.

SHEET NOTES

- LIGHT FIXTURES ARE TO BE CENTERED ON CEILING PANELS (C/N).
- ALL SALES FLOOR LIGHT FIXTURES ARE TO BE ORDERED THROUGH GRANINGER PER NATIONAL AGREEMENT.
- ALL EXISTING DIFFUSERS & RETURN AIR GRILLES ARE TO REMAIN IF APPLICABLE. REWORK AS REQUIRED PER NEW CEILING LAYOUT.
- GC TO VERIFY LIGHT QUANTITIES AND FIXTURES WITH QUANTITIES LISTED ON DRAWINGS.
- PROVIDE 100 LUMEN BATTERY BACKUPS IN EMERGENCY FIXTURES WHERE INDICATED ON DRAWINGS.
- QUANTITY OF EMERGENCY FIXTURES (FD02EM) ARE TO BE DETERMINED BY QUALIFIED ENGINEER. QUANTITY SHOWN MAY VARY.
- CEILING DIFFUSER SPECS: MANUFACTURER TITUS, RETURN, PAN 24"24" SQUARE PLAQUE DIFFUSER, STEEL LAY-IN FLUSH FACE, #28 WHITE. SUPPLY: TMS 24"24" SQUARE PLAQUE DIFFUSER, #28 WHITE.

LEGEND

NOT TO SCALE

- NEW 2x4 LED LIGHT FIXTURE, REF.#30D-2.0
- (N) RECESSED 1x4 LED LIGHT FIXTURE, REF.#30D-2.0 (9M)
- (N) RECESSED 1x4 LED LIGHT FIXTURE (EMERGENCY FIXTURE), REF.#30D-2.0 (9M)
- NEW EMERGENCY EXIT LIGHT (FILED REGION INDICATES GRAPHICS FACE)
- (N) TRACK LIGHTING
- NEW 2x2 CEILING GRID AND TILES, APC-2, SEE FINISH LEGEND ON A-2.0. FIRE-LIFE SAFETY EQUIPMENT TO REMAIN, REF.#10D-2.0
- NEW 24" CEILING GRID AND TILES, SUGGESTED APC-A, SEE FINISH LEGEND ON ON A2.0. FIRE-LIFE SAFETY EQUIPMENT TO REMAIN, REF.#10D-2.0
- NEW GYPSUM BOARD CEILING, REF.#40D-2.0
- INDICATES CEILING HEIGHT

KEYNOTES

- 1 FIXTURE BELOW - SEE DRAWING #1 ON A-5.0 FOR MORE INFORMATION AND EXACT PLACEMENT.
- 2 LIGHT TO BE CENTERED ON FIXTURE BELOW. GC TO AIM LIGHT ON CENTER SHELF OF FIXTURE (IF APPLICABLE)
- 3 GC TO PROVIDE 2' CONDUIT THRU ROOF DECK FOR FUTURE SATELLITE. COORDINATE WITH LL'S PREFERRED ROOFER, EXACT LOCATION TO BE DETERMINED BY ROOFER AND GC ON SITE. REF. TO DETAIL #5D-2.0
- 4 GC TO PROVIDE REMOTE THERMOSTAT.
- 5 PREFERRED LOCATION FOR MAIN LIGHTING SWITCH BANK. ALL INTERIOR LIGHTS TO TERMINATE HERE.
- 6 NEW GYPSUM BOARD CEILING, REF.#40D-2.0
- 7 PROVIDE DATA IN CEILING FOR RETAIL WIFI SYSTEM.
- 8 PROVIDE 2 DATA PORT IN T-BAR GRID CEILING FOR SHOPPERTRAK, FURNISHED AND INSTALLED BY OTHERS. CENTER OVER ENTRY DOOR.
- 9 CEILING GRID STARTING POINT.
- 10 ACCENT LIGHTS ON BACKS OF WALL UNITS SHOULD BE CONNECTED TO TIMECLOCK; SIGNAGE CIRCUIT.
- 11 GC TO PROVIDE PLYWOOD BACKER FOR FUTURE SPEAKER INSTALLATION. 6'X24"X1/2" (MIN) TO 24'X24"X1/2" (MAX), PLYWOOD TO BE PLACED ABOVE CEILING TILE. SPEAKER PROVIDED AND INSTALLED BY IT VENDOR.
- 12 GC TO PROVIDE SPEAKER CABLE FOR FUTURE SPEAKER INSTALLATION. BELDEN 6200UE 16 AWG PLENARIATED (OR EQUAL). CABLE MUST BE PULLED DIRECTLY ABOVE THE IT RACK AND EXTENDED TO FINISH FLOOR, AND HAVE ADDITIONAL 10'-0" OF SLACK AT SPEAKER END. SPEAKER TO BE PROVIDED AND INSTALLED BY IT VENDOR.

LIGHT FIXTURE SCHEDULE

TYPE	QTY	SPECIFICATIONS
EXIT	2	FIXTURE: EDGE LIT EXIT SIGN WITH BATTERY BACKUP MANUFACTURER: LITHONIA MODEL: WEGG 1 G EL LAMP:
FD2	7	FIXTURE: 1' X 4' LED FLAT PANEL, 5000LUMEN, 40W MANUFACTURER: METALLUX MODEL: 14P4240LED50W/120 LAMP: LED 40W - 120V 3500K
FD2EM	3	FIXTURE: 1' X 4' LED FLAT PANEL, 5000LUMEN, 40W MANUFACTURER: METALLUX MODEL: 14P4240LED50W/120 LAMP: LED 40W - 120V 3500K WITH EMERGENCY EQUIPMENT
LT1	33	FIXTURE: LED TRACKHEAD, WHITE FINISH. MANUFACTURER: SOLAS MODEL: XDS265-27K-1400-V LED TRACK WHITE. LAMP: LED, 27K.
T2W	4	FIXTURE: SURFACE MOUNTED ELECTRIFIED TRACK; IN LENGTHS AS SHOWN ON PLAN. ONE TRACK LIGHT PER 4' FIXTURE, WHITE FINISH. PROVIDE CONNECTORS AND ACCESSORIES AS REQUIRED. MANUFACTURER: LIGHTOLIER MODEL: 600N SERIES WH
	2	FIXTURE: 2x4 RECESSED FLUORESCENT LIGHT FIXTURE MANUFACTURER: WITH EMERGENCY EQUIPMENT MODEL: LAMP:

GC TO VERIFY QUANTITY OF LIGHT FIXTURES PER PLAN BEFORE ORDERING.

ISSUE DATE

Komus + Keller  
111 West Chicago Ave., Suite 1702  
Chicago, Illinois 60602  
www.komus.com



AT&T DEALER STORE  
3626 W OLD SHAKOPEE RD  
BLOOMINGTON, MN 55431

PROJECT NO.  
18,0323,01

DRAWN/REVIEWED  
MS/EC

DATE/ISSUE  
10,18,2018

SHEET TITLE  
REFLECTED CEILING PLAN

SHEET NO.  
A-3.0

## SANITARY FACILITIES NOTES

- VERIFY EXISTING - ON DOORWAYS LEADING TO MEN'S SANITARY FACILITIES, AN EQUILATERAL TRIANGLE 1/4 INCH THICK WITH EDGES 12 INCHES LONG AND A VERTEX POINTING UPWARD SHALL BE PROVIDED AND ON DOORWAYS LEADING TO WOMEN'S SANITARY FACILITIES A CIRCLE 1/4 INCH THICK AND 12 INCHES IN DIAMETER SHALL BE PROVIDED. THESE GEOMETRIC SYMBOLS SHALL BE CENTERED ON THE DOOR AT A HEIGHT OF 68 INCHES. THEIR COLOR AND CONTRAST SHALL BE DISTINCTLY DIFFERENT FROM THE COLOR AND CONTRAST OF THE DOOR. UNSEX SANITARY FACILITY SHALL BE IDENTIFIED BY A CIRCLE 1/4" THICK, 12" DIA. WITH A 1/4" THICK TRIANGLE SUPERIMPOSED CENTERED IN THE 12" DIA. CIRCLE.
- A WATER CLOSET FIXTURE LOCATED IN A COMPARTMENT SHALL PROVIDE A 24-INCH WIDE CLEAR SPACE FROM A FIXTURE OR A 24-INCH WIDE CLEAR SPACE FROM A WALL AT ONE SIDE OF THE WATER CLOSET AND A 48-INCH LONG CLEAR SPACE IN FRONT OF THE WATER CLOSET IF THE COMPARTMENT HAS AN END OPENING DOOR (FACING THE WATER CLOSET). A 60-INCH MINIMUM LENGTH CLEAR SPACE SHALL BE PROVIDED IN A COMPARTMENT WITH THE DOOR LOCATED IN THE SIDE. GRAB BARS SHALL NOT PROJECT MORE THAN 3/4 INCHES INTO THE CLEAR SPACE AS SPECIFIED ABOVE.
- WATER CLOSET COMPARTMENTS SHALL BE EQUIPPED WITH A DOOR THAT HAS AN AUTOMATIC CLOSING DEVICE, AND SHALL HAVE A CLEAR UNOBSTRUCTED OPENING WIDTH OF 32 INCHES WHEN LOCATED AT THE END AND 34 INCHES WHEN LOCATED AT THE SIDE WITH THE DOOR POSITIONED AT AN ANGLE OF 90 DEGREES FROM ITS CLOSED POSITION.
- EXCEPT FOR DOOR OPENING WIDTH AND DOOR SWINGS, A CLEAR UNOBSTRUCTED ACCESS NOT LESS THAN 44 INCHES SHALL BE PROVIDED TO WATER CLOSET COMPARTMENTS DESIGNED FOR USE BY THE DISABLED, THE SPACE IMMEDIATELY IN FRONT OF A WATER CLOSET COMPARTMENT SHALL BE NOT LESS THAN 48 INCHES AS MEASURED AT RIGHT ANGLES TO THE COMPARTMENT DOOR IN ITS CLOSED POSITION.
- THE HEIGHT OF ACCESSIBLE WATER CLOSSETS SHALL BE A MINIMUM OF 17 INCHES AND A MAXIMUM OF 19 INCHES MEASURED TO THE TOP OF TOILET SEAT.
- TOILET FLUSH CONTROLS SHALL BE OPERABLE WITH ONE HAND, AND SHALL NOT REQUIRE TIGHT GRASPING, PINCHING, OR TWISTING OF THE WRIST. CONTROLS FOR THE FLUSH VALVES SHALL BE MOUNTED ON THE WIDE SIDE OF THE TOILET AREAS, NO MORE THAN 44 INCHES ABOVE THE FLOOR. THE FORCE REQUIRED TO ACTIVATE CONTROLS SHALL BE NO GREATER THAN 5 POUNDS.
- WHERE URINALS ARE PROVIDED, AT LEAST ONE SHALL HAVE A CLEAR SPACE 30 INCHES WIDE X 48 INCHES LONG IN FRONT, WITH A RIM PROJECTING 17" MIN. A.F.F..
- A CLEAR FLOOR SPACE 30 INCHES WIDE X 48 INCHES LONG SHALL BE PROVIDED IN FRONT OF A LAVATORY TO ALLOW A FORWARD APPROACH. SUCH CLEAR FLOOR SPACE SHALL ADJOIN OR OVERLAP AN ACCESSIBLE ROUTE AND SHALL EXTEND INTO KNEE AND TOE SPACE UNDERNEATH THE LAVATORY.
- LAVATORIES SHALL BE MOUNTED WITH A CLEARANCE OF AT LEAST 29 INCHES FROM THE FLOOR TO THE BOTTOM OF THE APRON WITH KNEE CLEARANCE UNDER THE FRONT LIP EXTENDING A MINIMUM OF 30 INCHES IN WIDTH WITH 8 INCHES MINIMUM DEPTH AT THE TOP. TOE CLEARANCE SHALL BE THE SAME AND SHALL BE A MINIMUM OF 8 INCHES HIGH FROM THE FLOOR AND A MINIMUM OF 12 INCHES DEEP FROM THE FRONT OF THE LAVATORY.
- A PROJECTION OF LAVATORY BOWL INTO THE 8-INCH CLEAR SPACE, THEREBY REDUCING THE CLEAR HEIGHT BELOW THE LAVATORY TO NO LESS THAN 27 INCHES AT 8 INCHES BACK FROM THE APRON, MEETS THE REQUIREMENT FOR PROVIDING KNEE CLEARANCE.
- HOT WATER AND DRAIN PIPES UNDER LAVATORIES SHALL BE INSULATED OR OTHERWISE COVERED. THERE SHALL BE NO SHARP OR ABRASIVE SURFACES UNDER LAVATORIES.
- FAUCET CONTROLS AND OPERATING MECHANISMS SHALL BE OPERABLE WITH ONE HAND AND SHALL NOT REQUIRE TIGHT GRASPING, PINCHING OR TWISTING OF THE WRIST. THE FORCE REQUIRED TO ACTIVATE CONTROLS SHALL BE NO GREATER THAN 5 LBS. LEVER-OPERATED, PUSH-TYPE AND ELECTRONICALLY CONTROLLED MECHANISMS ARE EXAMPLES OF ACCEPTABLE DESIGN. SELF-CLOSING VALVES ARE ALLOWED IF THE FAUCET REMAINS OPEN FOR AT LEAST 10 SECONDS.
- MIRRORS SHALL BE MOUNTED WITH THE BOTTOM EDGE NOT MORE THAN 40 INCHES FROM THE FLOOR.
- LOCATE TOWEL, SANITARY NAPKIN, WASTE RECEPTACLES AND ANY OTHER DISPENSERS WITH ALL OPERABLE PARTS NOT MORE THAN 40 INCHES FROM THE FLOOR.
- LOCATE TOILET TISSUE DISPENSERS ON THE WALL WITHIN 12 INCHES OF THE FRONT EDGE OF THE TOILET SEAT.
- ALL TOILET ROOM ACCESSORY SHALL BE MOUNTED IN COMPLIANCE WITH ALL APPLICABLE CODES & DISABLED ACCESS REQUIREMENTS.
- TOILET ROOMS SHALL BE EQUIPPED WITH A MECHANICAL VENTILATION SYSTEM PROVIDING A MINIMUM OF FOUR (4) AFR CHANGES PER HOUR AND TO COMPLY WITH RESPECTIVE CODES.

## GRAB BARS GENERAL NOTES

- GRAB BARS, FASTENERS AND MOUNTING DEVICES SHALL BE DESIGNED FOR 250 LBS. PER LINEAR FEET LOAD.
- GRAB BARS SHALL BE LOCATED ON EACH SIDE, OR ONE SIDE AND THE BACK OF THE PHYSICALLY DISABLED TOILET STALL OR COMPARTMENT AND SHALL BE SECURELY ATTACHED 33 INCHES ABOVE AND PARALLEL TO THE FLOOR.
- GRAB BARS AT THE SIDE SHALL BE AT LEAST 36 INCHES LONG WITH THE FRONT END POSITIONED 24 INCHES IN FRONT OF THE WATER CLOSET STOOL, AND GRAB BARS AT THE BACK SHALL BE NOT LESS THAN 36 INCHES LONG.
- THE DIAMETER OR WIDTH OF THE GRIPPING SURFACES OF A GRAB BAR SHALL BE 1-1/4 INCHES TO 1-1/2 INCHES OR THE SHAPE SHALL PROVIDE AN EQUIVALENT GRIPPING SURFACE.
- IF THE GRAB BAR IS MOUNTED ADJACENT TO A WALL, THE SPACE BETWEEN THE WALL AND THE GRAB BAR SHALL BE 1-1/2 INCHES.
- A GRAB BAR AND ANY WALL OR OTHER SURFACE ADJACENT SHALL BE FREE OF ANY SHARP OR ABRASIVE ELEMENTS.
- GRAB BARS SHALL NOT ROTATE WITHIN THEIR FITTINGS.
- EDGES SHALL HAVE MINIMUM RADIUS OF 1/8 INCH.
- WHERE LOCKERS ARE PROVIDED, AT LEAST ONE AND NOT LESS THAN ONE PERCENT OF ALL LOCKERS SHALL BE MADE ACCESSIBLE TO THE PHYSICALLY DISABLED. A PATH OF TRAVEL NOT LESS THAN 36 INCHES IN CLEAR WIDTH SHALL BE PROVIDED TO THESE LOCKERS AND A CLEAR SPACE FOR A CIRCLE WITH DIAMETER OF 60 INCHES.

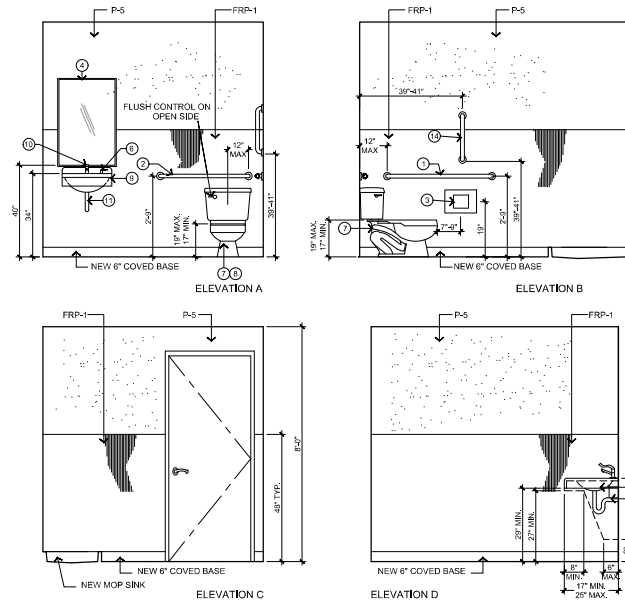
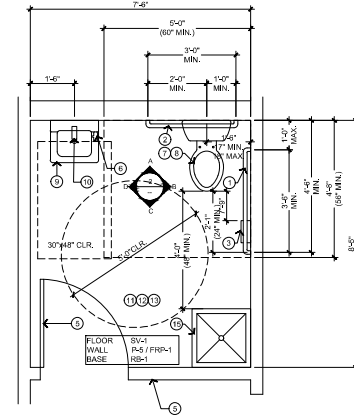
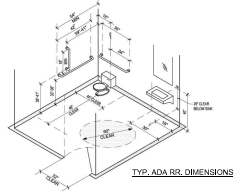
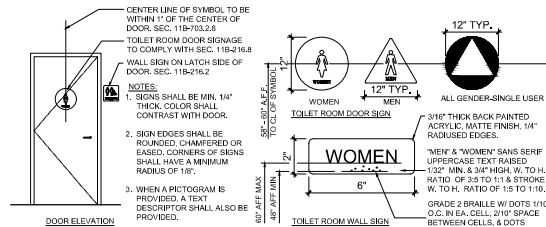
## ENLARGED PLAN KEYNOTES

- NEW 1 1/2" DIA. X 42" LONG STAINLESS STEEL GRAB BAR MOUNTED 1 1/2" FROM FIN. WALL SURFACE TO RIGID BACKING PER CODE. MOUNT AT PROPER ADA COMPLIANT HEIGHT.
- NEW 1 1/2" DIA. X 36" LONG STAINLESS STEEL GRAB BAR MOUNTED 1 1/2" FROM FIN. WALL SURFACE TO RIGID BACKING PER CODE. MOUNT AT PROPER ADA COMPLIANT HEIGHT.
- NEW TOILET TISSUE DISPENSER.
- NEW MIRROR WAL/LUMINUM TRIM.
- PROVIDE SIGNAGE PER CODE.
- NEW LAVATORY MOUNTED SOAP DISPENSER, 4" SPOUT TO PLACE @ LEVER LOCATION.
- NEW FLOOR MOUNTED TOILET, TOP OF SEAT TO BE AT PROPER ADA COMPLIANT HEIGHT.
- NEW SOLID PLASTIC SEAT, FOR ELONGATED BOWL, OPEN FRONT LESS COVER WITH STAINLESS STEEL HINGE POSTS.
- NEW LAVATORY, MOUNT AT PROPER ADA COMPLIANT HEIGHT.
- NEW CHROME LEVER HANDLE PLATED FAUCET.
- INSULATE ALL DRAINS AND EXPOSED PIPES, TYPICAL.
- O.C. TO PROVIDE FLOOR DRAINS IN THE RESTROOMS, FLOOR DRAIN RIM TO BE 1/16" BELOW SURFACE OF TILE.
- PROVIDE GROUND FAULT INTERRUPTER.
- NEW 1 1/2" DIA. X 18" VERTICAL LONG STAINLESS STEEL GRAB BAR MOUNTED 1 1/2" FROM FIN. WALL SURFACE TO RIGID BACKING PER CODE. MOUNT AT PROPER ADA COMPLIANT HEIGHT.
- NEW MOP SINK, PROVIDE PLUMBING AS REQUIRED.

## RESTROOM FINISHES

- |   |  |
|---|--|
| <p>ROLLED SHEET VINYL<br/>MANF: ARMSTRONG<br/>NAME: MERRITCH<br/>NUMBER: 8848<br/>COLOR: DANILA SKY<br/>SIZE: N/A - PROVIDE 6" COVERED BASE (RESTROOM FLOORING)</p> | <p>FRP PANEL<br/>MANF: MARLITE<br/>COLOR: WHITE<br/>FINISH: TEXTURED<br/>SIZE: 48" HIGH<br/>W/ PVC ACCESSORIES</p> |
| <p>MANF: BENJAMIN MOORE<br/>NAME: "HORIZON"<br/>COLOR: OC-53<br/>FINISH: EGGSHELL FINISH (WHITE WALLS)</p>  |  |

## RESTROOM SIGNAGE



## RESTROOM ELEVATIONS

Scale: 1/2" = 1'-0"

ISSUE DATE

Komus + Keller  
111 West Chicago Ave., Suite 7700  
Chicago, Illinois 60602  
www.komus.com



AT&T DEALER STORE  
3626 W OLD SHAKOPEE RD  
BLOOMINGTON, MN 55431

PROJECT NO.  
18,0323,01

DRAWN/REVIEWED  
MS/EC

DATE/ISSUE  
10.18.2018

SHEET TITLE  
RESTROOM PLAN

SHEET NO.  
A-7.0