

AHWATUKEE EXECUTIVE PLAZA

OFFICE SPACES FOR LEASE



11022 S 51ST ST, PHOENIX, AZ 85044



ALEX AFFAS, CCIM
Designated Broker
480-516-2046
alex@affire.co



BUILDING FEATURES

- ±15,284 total SF
 - 11 total office spaces
- Commercial Office zoning
- Two stories with stairs & elevator
- Common conference room
- Two common restrooms
- Covered parking available
- Directory signage available



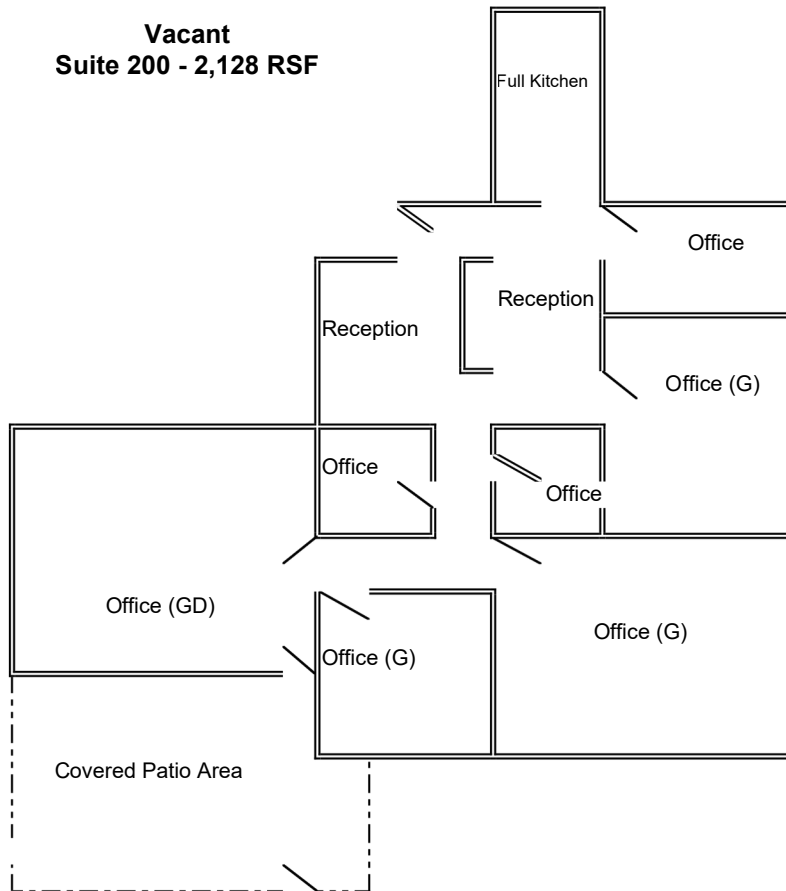
Near Elliot Road & Interstate 10



SUITE 200 - OFFICE SPACE AVAILABLE

- 2,128 SF; Rental rate: \$21/SF
- Full-service gross
- Second floor office
- Private entrance
- Full kitchen, reception area, covered patio
- Six built out professional offices

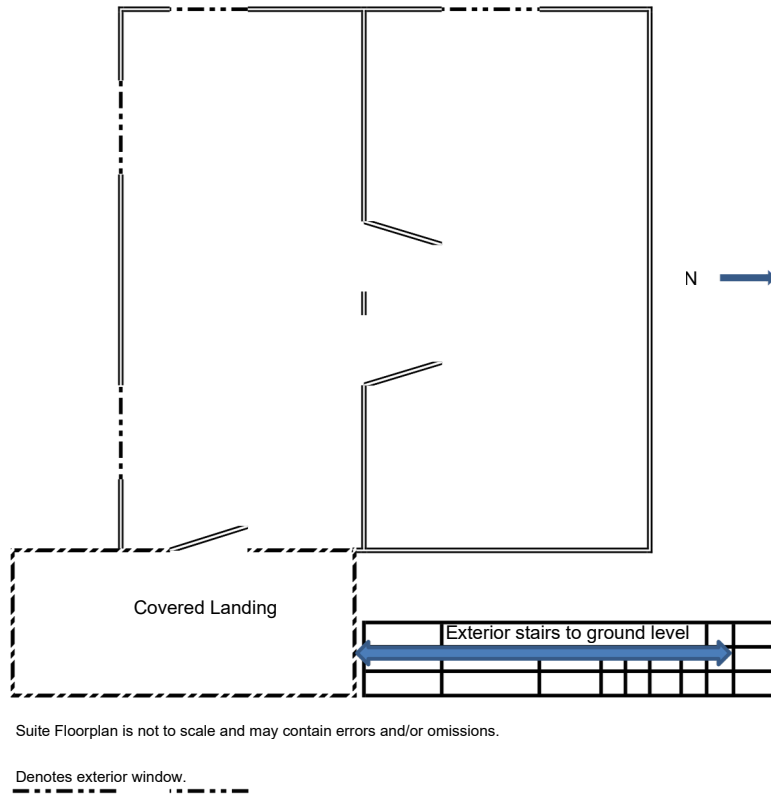
Vacant
Suite 200 - 2,128 RSF



Suite Floorplan is not to scale and may contain errors and/or omissions.
(G) - Denotes Exterior Glass (GD) - Denotes Exterior Glass Door



**Vacant
Suite 202 - 526 RSF**



Suite Floorplan is not to scale and may contain errors and/or omissions.



SUITE 202 - OFFICE SPACE AVAILABLE

- 526 SF; Rental rate: \$21/SF
- Full-service gross
- Second floor office
- Private entrance
- Open floor plan
 - Tenant Improvement allowance available
- Abundance of natural light

